

LIGHTING FIXTURE SCHEDULE										
TYPE	MANUFACTURER	CATALOG NUMBER	LAMPS		VOLTAGE	MOUNTING	WATTAGE PER FIXTURE	FIXTURE DESCRIPTION	NOTES	
			QTY	TYPE						
A	JANO	TRACK FIXTURE: RB00L-3KN-BL	-	10W LED	120	SUSPENDED	20	2'-0" TRACK WITH (2) TRACK HEADS (BLACK)	1,10	
B	HILITE	H-16118-101/CB15-91/0224 /10W WITH MAX WATAGE LABEL - BRUSHED ALUMINUM	-	10W LED MB	120	SUSPENDED	10	18" ROUND PENDANT W/ 15'-0" BLACK CORD. WATAGE LABEL ROLLED BEAD	2,3	
C	SATCO	85-317	-	48W 5000 LUMEN LED	120	RECESSED	48	2'X4' LED TROFFER WITH AGRIC LENS WITH 0-10V DIMMING DRIVER	4	
CA	METALUX	24CZ-LD4-55-UNV-LAS0-0D1-U	-	50W 5000 LUMEN LED	120	RECESSED	50	2'X4' LED TROFFER WITH 0-10V DIMMING DRIVER	4	
D	HALO	L1480WH/1480WH830	-	8W LED	120	RECESSED	8	4" ROUND LED CAN WITH WHITE TRIM	4,5	
DA	HALO	H750QAT-L1580WH830	-	10W LED	120	RECESSED	10	6" ROUND LED CAN WITH WHITE TRIM	4,5	
F	JANO	TRACK FIXTURE: RB00L-3KN-WH	-	10W LED	120	RECESSED	40	6'-0" TRACK WITH (4) TRACK HEADS (WHITE)	11	
G	LINEAR LED LIGHTING	30-24V-F20-8007 WITH 30-DV-24V150W DRIVER 30-TAPE-GR0-CL COVER	-	1.5W PER FOOT	120	SURFACE	70.5	FIELD CUTTABLE LED TAPE LIGHT WITH 150 WATT MAX. DRIVER	4	
EX	SURE-LITE	APC7-35	-	WITH UNIT	120	SURFACE	3	COMBINATION EXIT LIGHT WITH DUAL LAMP EMERGENCY LIGHT	8,8	
EL	SURE-LITE	CU2-LED	-	WITH UNIT	120	SURFACE	3	LED EMERGENCY LIGHT	6,9	
EI	LITHONIA	TM91 LED P2 40K MVOLT	-	LED	120	SURFACE	28	LED WALL LUMINAIRE 28W	-	

SUPPLIER NOTE:
ALL LIGHTING TO BE PURCHASED THROUGH:
MELTIO ELECTRICAL SUPPLY, 10930 HARRY HINES, DALLAS, TEXAS 75220 JIM ELLIS (SALES MANAGER)
1-800-777-4983 EXT. 1143. ELLIS@MELTIO.COM

LIGHT FIXTURE SCHEDULE NOTES:

1. MOUNT TO SCHEDULED CEILING BOTTOM OF TRACK MOUNTED TO BOTTOM OF FRAMING AND 5'-0" FROM ADJACENT WALLS UNLESS NOTED OTHERWISE. SUSPEND TRACK ON 1/2" ALL-THE-ROUNDS.
2. MOUNT TO SCHEDULED CEILING. ALL AREAS SUSPEND TO 8'-0" AFF.
3. PROVIDED WITH FACTORY INSTALLED MAX LINES. NOTED.
4. MOUNT TO SCHEDULED CEILING.
5. CEILING INSULATION MUST BE 3" AWAY ALL SIDES.
6. EMERGENCY AND EXIT LIGHTS SHALL HAVE MINIMUM 90 MINUTE BATTERY BACKUP.
7. PROVIDED WITH SWITCHPROOF LAMP.
8. MOUNT TO BOTTOM OF SCHEDULED CEILING. FURF-DOWN AS REQUIRED.
9. MOUNT TO SCHEDULED PARTITION AT 8" BELOW FINISHED CEILING.
10. VERIFY QUANTITY OF CURRENT LIMITERS WITH DRAWING. NOT REQUIRED ON ALL TYPE 'A' TRACK.
11. MOUNT IN COVE.

KEY NOTES:

1. EMERGENCY LIGHTING AND EXIT SIGNS TO BE CONNECTED TO THE UNSWITCHED LEG OF THE LOCAL LIGHTING CIRCUIT SERVING THE FIXTURE.

LIGHTING CONTROL SEQUENCE OF OPERATION

- DINING AREA LIGHTING SHALL BE TURNED ON MANUALLY AND REMAIN IN THIS STATE UNTIL WORKING/BUSINESS HOURS ARE OVER.
- LET THE OVERRIDE SWITCH EXTEND THE OPERATION TIME OF THE LIGHTS FOR 4 HOURS.
- FOOD PREPARATION (KITCHEN) AREA LIGHTS SHALL BE TURNED ON AND OFF MANUALLY.
- BATHROOM LIGHTS SHALL BE TURNED ON MANUALLY AND TURNED OFF BY OCCUPANCY SENSOR IF NOBODY IS DETECTED INSIDE FOR 15 MINUTES.
- SIGN LIGHTING SHALL BE TURNED ON AND OFF VIA ASTRONOMICAL TIMER.

NOTE:

COORDINATE WORKING/BUSINESS HOURS AND ANY OTHER DETAILS NEEDED WITH OWNER BEFORE PROGRAMMING LIGHTING CONTROL PANEL.

MECHANICAL EQUIPMENT SCHEDULE

EQUIPMENT NAME	LOCATION / SERVES	VOLTAGE	PHASE	HP	KW	KW / POLE	FLA	MCA	MOCP	BREAKER AMPACITY	PANEL	FEEDER	DISCONNECT (NOTE 1)				CONTROL
													SIZE	POLES	FUSE SIZE	ENCLOSURE	
RFU-1	DINING/KITCHEN	208	3		11.8	3.92	32.6	49.8	35	60	C-19,21,23	3/4-12-18-12-G-1/2 °C	60	3	NF	NEMA 3R	
RFU-2	DINING/KITCHEN	208	3		11.2	3.72	31.0	38.8	40	30	C-25,27,39	3/4-12-18-12-G-1/2 °C	30	3	NF	NEMA 3R	
SUPPLY HOOD	KITCHEN (HOOD)	208	3		1.6	0.53	4.4	5.5	15	15	C-22,24,26	3/4-12-18-12-G-1/2 °C	30	3	NF	NEMA 3R	
EXHAUST HOOD	KITCHEN (HOOD)	208	3		2.2	0.73	6.1		15	15	C-28,30,32	3/4-12-18-12-G-1/2 °C	30	3	NF	NEMA 3R	

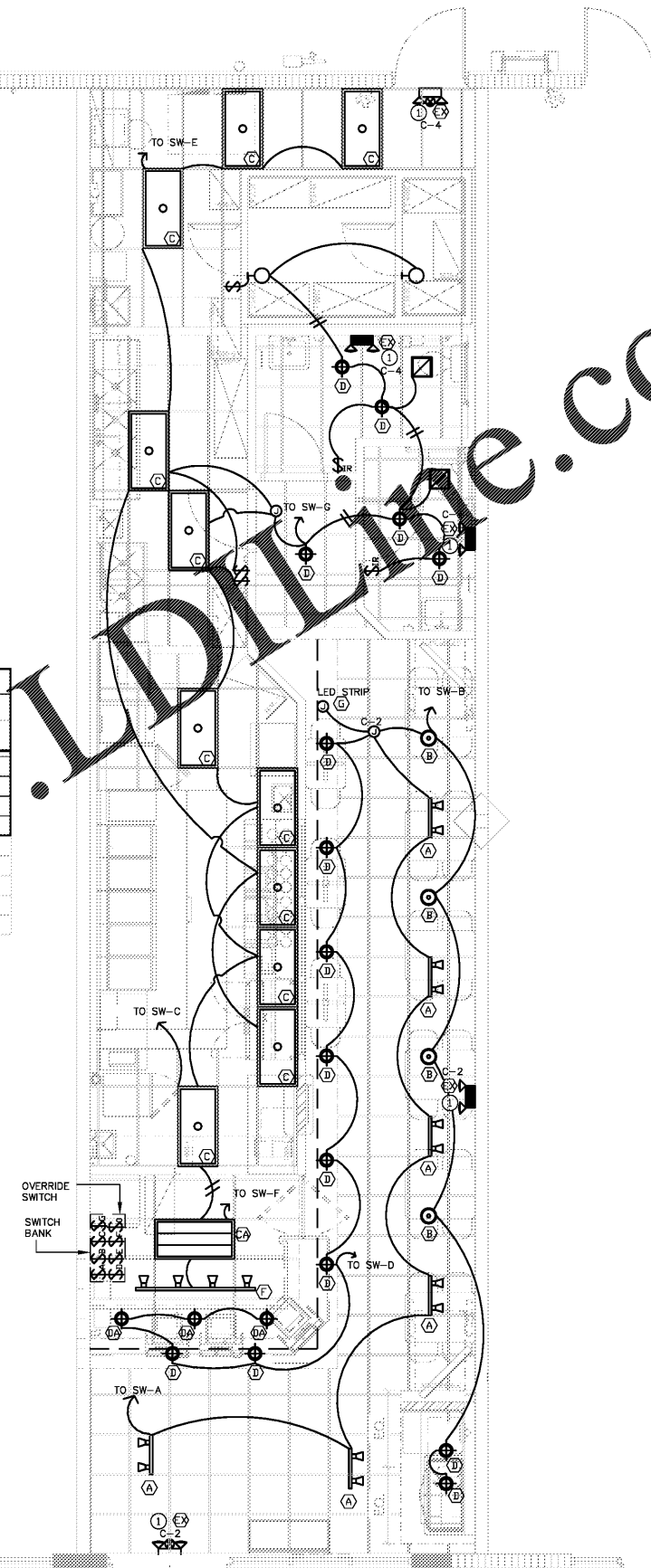
NOTES:

1. DISCONNECT SWITCH IS NOT REQUIRED IF UNIT IS PROVIDED WITH DISCONNECT OR IF UNIT HAS CORD/PLUG AND RECEPTACLE.
- 2.
- 3.

EQUIPMENT SCHEDULE

TAG	DESCRIPTION	VOLTAGE	PHASE	HP	KW	KW / PHASE	FLA	BREAKER AMPACITY	CONTACTOR SHUNT	PANEL	FEEDER	DISCONNECT	MOUNTING HEIGHT
1	GLASS DOOR MERCHANDISER	120	1	0.33	1.1	1.10	9.2	15	NO	SP1-17	2/4-12-18-12-G-1/2 °C	NEMA 5-15P, GFCI	60" AFF
3	SANDWICH/SALAD UNIT	120	1	0.25	1.03	1.03	8.6	15	NO	SP1-15	2/4-12-18-12-G-1/2 °C	NEMA 5-15P, GFCI	40" AFF
4	1-DOOR REACH IN REFRIGERATOR	120	1	0.33	0.7	0.70	5.8	15	NO	SP1-2	2/4-12-18-12-G-1/2 °C	NEMA 5-15P, GFCI	60" AFF
6	HOOD FIRE ANSUL SUPPRES. SYST.	120	1		0.6	0.60	5.0	15	NO	SP1-1	2/4-12-18-12-G-1/2 °C	COORDINATE WITH OWNER	COORDINATE
14	ICE MACHINE	120	1	1.8	1.80	1.80	15.0	20	NO	SP1-13	2/4-12-18-12-G-1/2 °C	COORDINATE WITH OWNER	60" AFF
15(2)	TANKLESS WATER HEATER	120	1	0.5	0.50	0.50	4.2	15	NO	SP1-18	2/4-12-18-12-G-1/2 °C	COORDINATE WITH OWNER	COORDINATE
17	HOT FOOD WELL	120	1	0.5	0.60	0.60	3.8	15	NO	SP1-1	2/4-12-18-12-G-1/2 °C	COORDINATE WITH OWNER	COORDINATE
18 (5)	SOLstice SUPREME GAS FRYER	120	1	0.98	0.98	0.98	7	15	YES	SP1-3/3/7/9/11	2/4-12-18-12-G-1/2 °C	COORDINATE WITH OWNER	COORDINATE
20	COOKING & HOLDING TIMER	120	1	0.5	0.50	0.50	4.2	15	NO	C-33	2/4-12-18-12-G-1/2 °C	COORDINATE WITH OWNER	COORDINATE
28	TEA DISPENSER	120	1	1	1.01	1.01	8.4	15	NO	SP1-23	2/4-12-18-12-G-1/2 °C	NEMA 5-15P, GFCI	COORDINATE
34	FREESTYLE DISPENSER	120	1	2	2.40	2.40	20.0	20	NO	SP1-1	2/4-12-18-12-G-1/2 °C	COORDINATE WITH OWNER	24" AFF
46 (4)	POINT OF SALE SYSTEM	120	1	1	0.96	0.96	8.0	15	NO	C-13/5/10	2/4-12-18-12-G-1/2 °C	COORDINATE WITH OWNER	24" AFF
47	SMART RACK 9U WALL MOUNT	120	1	1	0.60	0.60	5.0	15	NO	C-42	2/4-12-18-12-G-1/2 °C	COORDINATE WITH OWNER	COORDINATE
50	STEREO (AMP) RECEIVER	120	1	0.60	0.60	0.60	5.0	15	NO	C-14	2/4-12-18-12-G-1/2 °C	NEMA 6-30R / P	18" AFF
58(2)	T.V. & WALL STAND	120	1	0.45	0.44	0.44	3.7	15	NO	C-7	2/4-12-18-12-G-1/2 °C	NEMA 5-15P	COORDINATE
60 (2)	HAND DRYER	120	1	0.35	0.35	0.35	2.9	15	NO	SP1-9/11	2/4-12-18-12-G-1/2 °C	COORDINATE WITH OWNER	COORDINATE
84	REACH-IN BRIDGE	120	1	0.50	0.85	0.85	7.1	15	NO	SP1-6	2/4-12-18-12-G-1/2 °C	NEMA 5-20R, GFCI	60" AFF
85	S.S. WORK TABLE	120	1	1	0.96	0.96	8.0	20	NO	C-35	2/4-12-18-12-G-1/2 °C	COORDINATE WITH OWNER	COORDINATE
87	CONVECT OVEN	208	1	2.9	1.46	1.46	14.0	20	NO	SP1-10,12	2/4-12-18-12-G-1/2 °C	NEMA 6-15P	42" AFF
90	FLY FAN/AIR CURTAIN	208	1	1.6	0.78	0.78	7.5	15	NO	N/A	2/4-12-18-12-G-1/2 °C	COORDINATE WITH OWNER	COORDINATE
93	ROUND DROP-IN HOT FOOD WELL	120	1	0.8	0.80	0.80	6.7	15	NO	N/A	2/4-12-18-12-G-1/2 °C	COORDINATE WITH OWNER	COORDINATE
96	1 KEG DIRECT DRAW DISPENSER	120	1	0.5	0.48	0.48	4.0	15	NO	N/A	2/4-12-18-12-G-1/2 °C	NEMA 5-15P	COORDINATE
97	NACHO CHEESE DISPENSER	120	1	0.5	0.50	0.50	4.2	15	YES	SP1-4	2/4-12-18-12-G-1/2 °C	COORDINATE WITH OWNER	40" AFF
G(2)	GENERAL POWER	120	1	1.5	1.50	1.50	20	30	NO	C-16/18	2/4-12-18-12-G-1/2 °C		

1 | ELECTRICAL LIGHTING FLOOR PLAN
SCALE: 1/4" = 1'-0"



THESE PLANS ARE FOR BUILDING DEPARTMENT REVIEW ONLY. THEY ARE NOT TO BE CONSTRUED AS CONSTRUCTION DOCUMENTS UNTIL ALL BUILDING DEPARTMENT APPROVALS ARE OBTAINED.

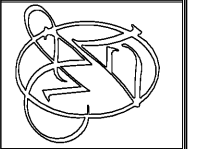
PROJECT #: 19022

 OSCAR E. SEBLEN, PE - LIC #66481
 5230 S UNIVERSITY DR, SUITE 106, DAVIE, FL 33328
 P: 954.680.2690 F: 954.414.9393 www.rcieng.com

DATE: 03/15/19

THIS DOCUMENT, THE IDEAS AND DESIGNS INCORPORATED HEREIN, AS AN INSTRUMENT OF PROFESSIONAL SERVICE, IS THE PROPERTY OF WARNER ARCHITECTURAL ASSOCIATES AND IS NOT TO BE USED, IN WHOLE OR IN PART, FOR ANY OTHER PROJECT WITHOUT THE WRITTEN AUTHORIZATION OF WARNER ARCHITECTURAL ASSOCIATES, INC.

WARNER ARCHITECTURAL ASSOCIATES
 109 ANDERSON STREET SE, SUITE 105
 MARIETTA, GA 30060
 PH: 678.290.9200
 EMAIL: INFO@WARNERARCHASSOC.COM



10125 ULMERTON RD.
 LARGO, FL 33771 (SUITE C)
 STORE # V050

DRAWN BY: RCI
 CHECKED BY: RCI
 DATE: 03/15/2019
 PROJECT: V050
 REVISION:

ELECTRICAL LIGHTING FLOOR PLAN
 DRAWING NUMBER
E2