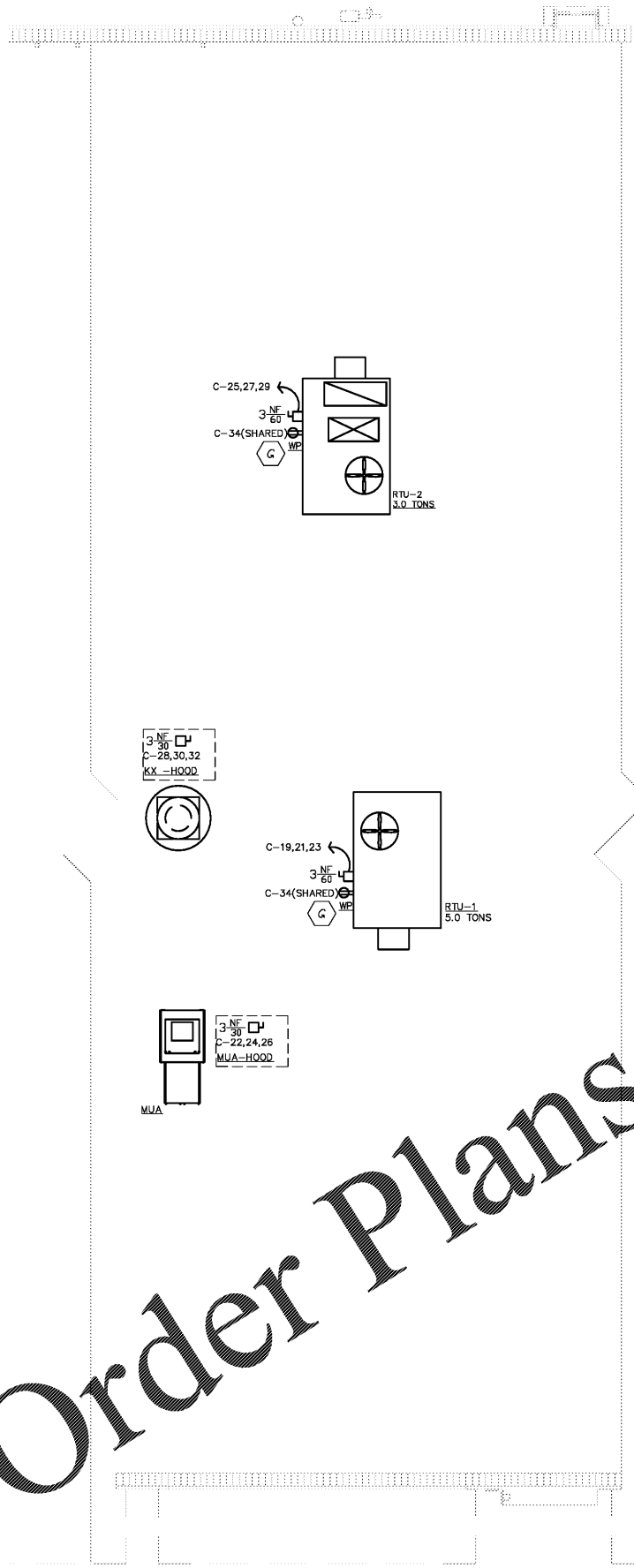
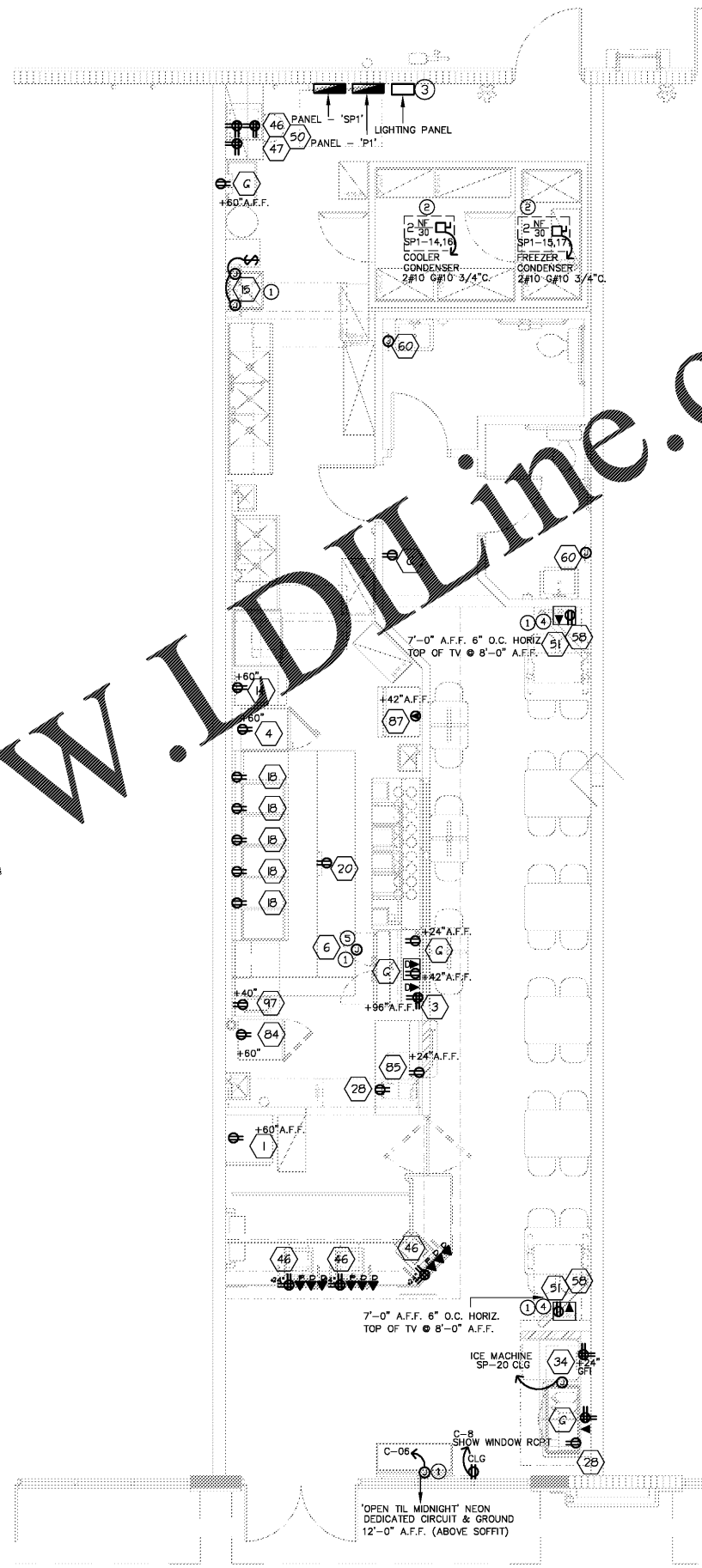


Order Plans @

www.DIline.com



2 | ELECTRICAL POWER ROOF PLAN
SCALE: 1/4" = 1'-0"



1 | ELECTRICAL POWER FLOOR PLAN
SCALE: 1/4" = 1'-0"

GENERAL NOTES:
1. ELECTRICAL CONTRACTOR SHALL VERIFY THE VOLTAGE AND AMPERAGE REQUIREMENTS OF ALL EQUIPMENT DELIVERED TO THE SITE PRIOR TO CONNECTION AND SHALL NOTIFY OWNER OF ANY DIFFERENCE.

KEY NOTES:
1. COORDINATE EXACT MOUNTING HEIGHT WITH OWNER.
2. ELECTRICAL CONTRACTOR TO PROVIDE DISCONNECT SWITCH AND MAKE FINAL CONNECTION TO SELF-EVAPORATING COOLER/FREEZER CONDENSER UNIT MOUNTED ABOVE COOLER/FREEZER.
3. PROVIDE LIGHTING CONTROL PANEL, MODEL GR1404 LT
4. CONNECT TV'S RECEPTACLES TO SAME CIRCUIT.
5. REFER TO HOOD DETAIL SHEETS FOR INSTALLATION WIRING.

KITCHEN RECEPTACLES NOTES:
1. ALL KITCHEN 120 VOLT, SINGLE PHASE, 15 AND 20 AMP RECEPTACLES SHALL BE GFCI TYPE PER NEC SECTION 210.8 (B)
2. ALL GFCI RECEPTACLES SHALL BE INSTALLED IN A READILY ACCESSIBLE LOCATION OR A GFCI CIRCUIT BREAKER SHALL BE USED TO FEED THE CIRCUIT.
3. ALL 125V, 15A AND 20A CIRCUITS TO KITCHEN EQUIPMENT SHALL BE FED WITH A DEDICATED NEUTRAL WIRE.

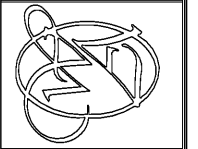
ELECTRICAL LEGEND

	WALL MOUNTED FIXTURE
	SWITCH
	SWITCH W/BUILT-IN PIR OCCUPANCY SENSOR
	3-WAY SWITCH
	DISCONNECT
	DUPLEX RECEPTACLE
	QUADRUPLEX RECEPTACLE
	SPECIAL RECEPTACLE
	CEILING MOUNTED RECEPTACLE
	JUNCTION BOX
	ELECTRICAL PANEL
	ELECTRICAL METER
	TELEPHONE JACK
	DATA JACK
	WALL MOUNTED EMERGENCY LIGHT WITH 90 MINUTES BATTERY BACKUP
	EXIT SIGN/EMERGENCY LIGHT COMBO WITH 90 MINUTES BATTERY BACKUP
	GROUND FAULT INTERRUPT
	WEATHER PROOF
	NEW
	EXISTING TO REMAIN
	EXISTING RELOCATED

DATE: 03/15/19

THIS DOCUMENT, THE IDEAS AND DESIGNS INCORPORATED HEREIN, AS AN INSTRUMENT OF PROFESSIONAL SERVICE, IS THE PROPERTY OF WARNER ARCHITECTURAL ASSOCIATES AND IS NOT TO BE USED, IN WHOLE OR IN PART, FOR ANY OTHER PROJECT WITHOUT THE WRITTEN AUTHORIZATION OF WARNER ARCHITECTURAL ASSOCIATES, INC.

WARNER ARCHITECTURAL ASSOCIATES
109 ANDERSON STREET SE, SUITE 105
MARIETTA, GA 30060
PH: 678.290.9200
EMAIL: INFO@WARNERARCHASSOC.COM



WINGSTOP
10125 ULMERTON RD.
LARGO, FL 33771 (SUITE C)
STORE # V050

DRAWN BY: RCI
CHECKED BY: RCI
DATE: 03/15/2019
PROJECT: V050
REVISION:

PROJECT #: 19022
RCI Engineering, Inc. C.A.#: 27662
BRIAN D. GOLDWELL, PE - LIC #67527
OSCAR E. SEBLEN, PE - LIC #66481
5230 S UNIVERSITY DR, SUITE 106, DAVIE, FL 33328
P: 954.680.2690 F: 954.414.9393 www.rcieng.com

ELECTRICAL POWER PLAN
DRAWING NUMBER
E1

THESE PLANS ARE FOR BUILDING DEPARTMENT REVIEW ONLY. THEY ARE NOT TO BE CONSTRUED AS CONSTRUCTION DOCUMENTS UNTIL ALL BUILDING DEPARTMENT APPROVALS ARE OBTAINED.