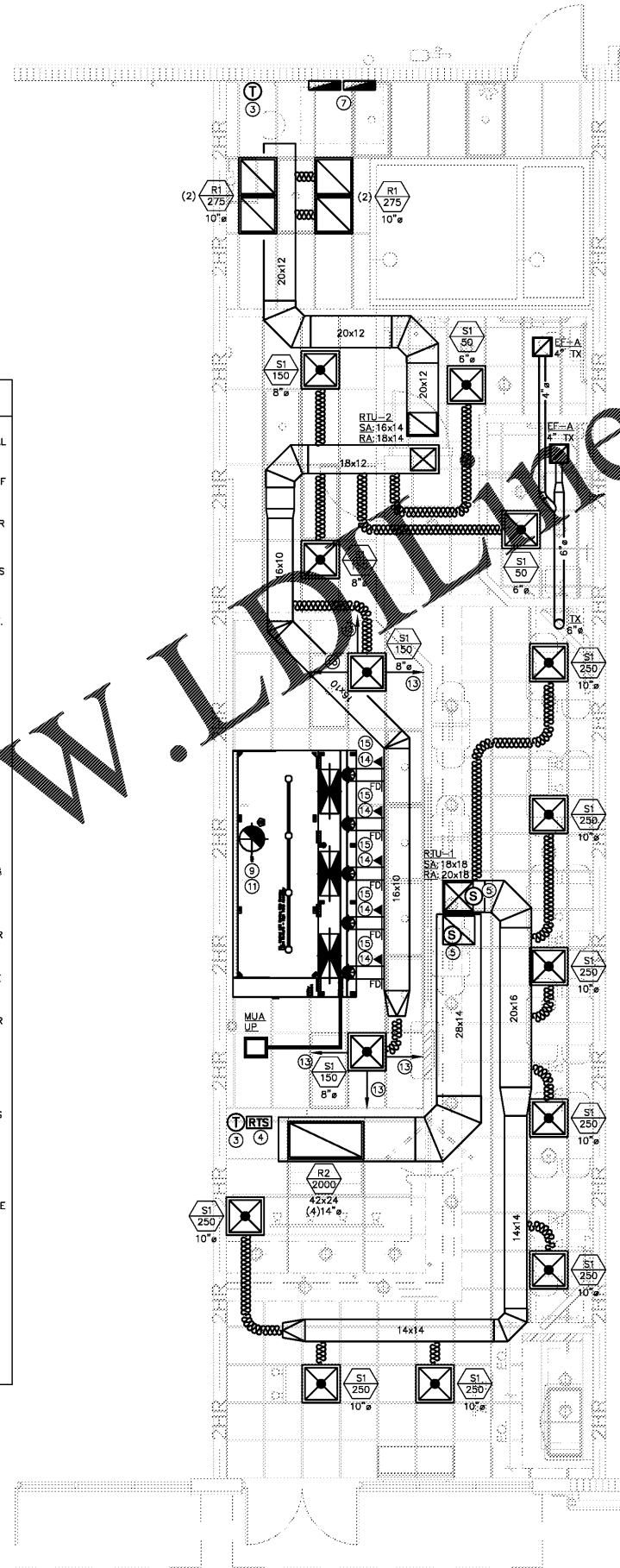


Order Plans @

2 | MECHANICAL ROOF PLAN
SCALE: 1/4" = 1'-0"

- ### HVAC KEY NOTES
- NEW RTU MOUNTED ON ROOF. COORDINATE REQUIREMENTS WITH LANDLORD AND STRUCTURAL ENGINEER. MAINTAIN SERVICE CLEARANCES AROUND UNITS.
 - CONDENSATE LINE TO EXTEND TO NEAREST ROOF DRAIN. ALL NEW PIPING ON ROOF SHALL BE INSTALLED ON THERMOPLASTIC OR EPDM SUPPORTS THAT MAINTAIN UNIFORM SLOPE. CADDY PYRAMID ST OR EZ SERIES BY ERICO, OR EQUAL. CONDENSATE DRAIN SHALL BE TRAPPED AS SPECIFIED BY MANUFACTURER.
 - PROGRAMMABLE THERMOSTAT LOCATION. COORDINATE EXACT REQUIREMENTS AND OPTIONS WITH OWNER. NOTIFY ENGINEER PRIOR TO CHANGING LOCATIONS.
 - REMOTE TEST SWITCH FOR RTU DUCT SMOKE DETECTOR INSTALLED NO HIGHER THAN 48" AFF. RTS SHALL INCLUDE AUDIO AND VISUAL ALARM TO SIGNAL TROUBLE CONDITIONS. EACH RTS SHALL BE CLEARLY LABELED AS TO THE RTU SERVED (UNIT NUMBER AND AREA OF STORE). LOCATION OF RTS TO BE APPROVED BY AHJ PRIOR TO INSTALLATION.
 - PROVIDE SMOKE DETECTOR IN SUPPLY AND RETURN DUCTS PRIOR TO FIRST BRANCH.
 - TOILET EXHAUST, SIZED AS NOTED, UP TO ROOFCAP WITH BACKDRAFT DAMPER AND WIRE MESH SCREEN.
 - DO NOT CROSS ANY DUCTWORK ABOVE ELECTRICAL PANEL. COORDINATE EXACT LOCATION OF RTU AND ACCESSIBLE TO MAINTAIN MINIMUM 30"Wx35"D SERVICE CLEARANCE FOR ELECTRICAL PANELS IN THIS AREA. FIELD COORDINATE WITH ELEC CONTRACTOR.
 - KITCHEN EXHAUST DUCT. MAINTAIN MINIMUM CLEARANCE FROM INTAKES AND PLUMBING OPENINGS. REFER TO HOOD DRAWINGS BY OTHERS FOR SPECIFICATIONS AND ADDITIONAL INFORMATION. REFER TO HOOD DRAWINGS FOR REFERENCE PURPOSES ONLY.
 - WHEN HOOD EXHAUST FAN AND DUCTWORK SHOWN FOR REFERENCE PURPOSES ONLY. REFER TO HOOD DRAWINGS BY OTHERS FOR SPECIFICATIONS AND ADDITIONAL INFORMATION. COORDINATE INSTALLATION WITH GENERAL CONTRACTOR. MAINTAIN MIN. 10'-0" CLEARANCE FROM INTAKES, 3'-0" FROM OTHER EQUIPMENT.
 - KITCHEN HOOD MAKEUP FAN AND DUCTWORK SHOWN FOR REFERENCE PURPOSES ONLY. REFER TO HOOD DRAWINGS BY OTHERS FOR SPECIFICATIONS AND ADDITIONAL INFORMATION. COORDINATE INSTALLATION WITH GENERAL CONTRACTOR. NOTIFY ENGINEER PRIOR TO CHANGING LOCATION OF ANY SYSTEM EQUIPMENT. MAINTAIN MIN. 10'-0" CLEARANCE FROM EXHAUST FANS AND PLUMBING VENTS.
 - METAL KITCHEN EXHAUST DUCT TO ROOFCAP AS SHOWN, WITH BACKDRAFT DAMPER AND WIRE MESH SCREEN. MAINTAIN MINIMUM 10" CLEARANCE FROM INTAKES AND BUILDING OPENINGS. REFER TO HOOD DRAWINGS BY OTHERS FOR SPECIFICATIONS AND ADDITIONAL INFORMATION.
 - COORDINATE EXACT LOCATION OF RTU TO NOT CONFLICT WITH WALK-IN COOLERS. PROVIDE LINE ITEM BID TO INSTALL SECURITY CAGE AROUND RTUS, MAINTAINING ALL REQUIRED CLEARANCES WHEN DOORS ARE OPEN.
 - PROVIDE ADJUSTING PATTERN CONTROLLERS TO BLOW AWAY FROM KITCHEN HOOD. BLOW IN DIRECTION OF ARROWS SHOWN.
 - DYNAMIC FIRE DAMPER, UL 555, 1.5/3-HR FRR, GREENHECK DFR-510 (ROUND) AND DFD-350 (RECTANGULAR WITH TRANSITION TYPE 'B' OR 'C'); DAMPER OUT OF AIRSTREAM) OR EQUAL.
 - 8" SUPPLY AIR DUCT DOWN TO HOOD SUPPLY DIFFUSER. TRANSITION AS REQUIRED. BALANCE TO 100 CFM.



1 | MECHANICAL FLOOR PLAN
SCALE: 1/4" = 1'-0"

HVAC LEGEND

WIDTH x HEIGHT	DESCRIPTION
	NEW RIGID FIBERGLASS DUCTWORK
	NEW FLEXIBLE DUCTWORK
	SQUARE TO ROUND TRANSITION
	SQUARE TO SQUARE TRANSITION
	BRANCH TAKE OFF
	REFRIGERANT OR CONDENSATE PIPING
	THERMOSTAT
	3-GORE 90 BEND
	45' ROUND JUNCTION
	SQUARE CEILING SUPPLY DIFFUSER
	SQUARE CEILING RETURN GRILLE
	CEILING EXHAUST FAN

AIR DISTRIBUTION BASED ON TITUS

SUPPLY DIFFUSERS:

	TITUS PAS-AA, PERFORATED SUPPLY, PROVIDE FACE OPERABLE OPPOSED BLADE DAMPER. SIZE, NECK, CFM AS NOTED. FLUSH LAY-IN BORDER. COORDINATE COLOR WITH OWNER. 24x24 MODULE U.O.N.
--	--

RETURN GRILLES:

	TITUS PAR-AA, PERFORATED RETURN. SIZE, NECK, CFM AS NOTED. FLUSH LAY-IN BORDER. COORDINATE COLOR WITH OWNER. 24x24 MODULE, U.O.N.
	TITUS 350FL. SIZE, NECK, CFM AS NOTED. COORDINATE BORDER WITH ARCHITECT. COORDINATE COLOR WITH OWNER.

CONTRACTOR SHALL FABRICATE PLENUM BOXES FOR ALL GRILLES. PLENUMS SHALL MATCH THE NECK OF THE GRILLE, AND SHALL BE DEEP ENOUGH TO ALLOW THE FLEXIBLE DUCT TAP TO BE INSTALLED ON THE SIDE OF THE PLENUM WHEN NECESSARY.

NOTE: REFER TO KITCHEN CONSULTANT'S HOOD DRAWINGS FOR ALL INFORMATION PERTAINING TO THE KITCHEN HOOD, EXHAUST, AND MAKE-UP AIR SYSTEM. THIS INCLUDES, BUT IS NOT LIMITED TO DIMENSIONS, LAYOUT, AIR FLOW QUANTITIES, FAN SPECIFICATIONS, FIRE SUPPRESSION SYSTEM. KITCHEN EXHAUST AND MAKE-UP AIR FANS ARE TO BE ELECTRICALLY INTERLOCKED TO RUN SIMULTANEOUSLY.

THESE PLANS ARE FOR BUILDING DEPARTMENT REVIEW ONLY. THEY ARE NOT TO BE CONSTRUED AS CONSTRUCTION DOCUMENTS UNTIL ALL BUILDING DEPARTMENT APPROVALS ARE OBTAINED.

PROJECT #: 19022

BRIAN D. COLDWELL, PE - LIC #67527
OSCAR E. SEBELIN, PE - LIC #66481
5230 S UNIVERSITY DR, SUITE 106, DAVIE, FL 33328
P: 954.680.2690 F: 954.414.9393 www.rcieng.com

DATE: 03/15/19

THIS DOCUMENT, THE IDEAS AND DESIGNS INCORPORATED HEREIN, AS AN INSTRUMENT OF PROFESSIONAL SERVICE, IS THE PROPERTY OF WARNER ARCHITECTURAL ASSOCIATES AND IS NOT TO BE USED, IN WHOLE OR IN PART, FOR ANY OTHER PROJECT WITHOUT THE WRITTEN AUTHORIZATION OF WARNER ARCHITECTURAL ASSOCIATES, INC.

WARNER ARCHITECTURAL ASSOCIATES
109 ANDERSON STREET SE, SUITE 105
MARIETTA, GA 30060
PH: 678.290.9200
EMAIL: INFO@WARNERARCHASSOC.COM



10125 ULMERTON RD.
LARGO, FL 33771 (SUITE C)
STORE # V050

DRAWN BY: RCI
CHECKED BY: RCI
DATE: 03/15/2019
PROJECT: V050
REVISION:

MECHANICAL FLOOR AND ROOF PLAN
DRAWING NUMBER
M1