

**Fire System Information - Job#3741775**

| FIRE SYSTEM NO. | Tag | TYPE       | SIZE    | FLOW POINTS | INSTALLATION      |                  |
|-----------------|-----|------------|---------|-------------|-------------------|------------------|
|                 |     |            |         |             | SYSTEM            | LOCATION ON HOOD |
| 1               |     | Ansul R102 | 3.0/3.0 | 21          | Fire Cabinet Left | Left             |

HOOKUP, PERMITTING, AND FINAL TESTING OF ANSUL SYSTEM PROVIDED BY CAPTIVE-AIRE SYSTEMS

**NOTES**

- FIELD PIPE DROPS AS SHOWN
- SLEEVING, ELBOWS, TEES, AND NOZZLES SUPPLIED BY CAS
- RELOCATE NOZZLES IF FLOW PATTERN IS BLOCKED BY SHELVING, SALAMANDERS, ETC.
- MAXIMUM 9 ELBOWS IN SUPPLY LINE.
- MINIMUM 72 INCHES OF AGENT LINE FROM TANK TO FIRST NOZZLE.
- IF APPLICABLE, PRE-PIPED CHARBROILER DROPS ARE SHIPPED.
- FACTORY PIPING EXTENDS A MAXIMUM OF 6' ABOVE THE TOP OF THE HOOD.
- APPLIANCE DIMENSIONS LISTED REPRESENT THE COOKING SURFACE SIZE, NOT THE OVERALL APPLIANCE SIZE.
- THIS FIRE SYSTEM COMPLIES WITH UL 300 REQUIREMENTS

**LEGEND - FIRE CABINET ANSUL SYSTEM**

- 1A 1.5 GALLON TANK
- 1B 3 GALLON TANK
- 2 DEM AUTOMAN RELEASE
- 3 DEM REGULATED RELEASE
- 4 DEM REGULATED ACTUATOR
- 5 ANSULEX LIQUID AGENT (3 GAL.)
- 6 ANSULEX LIQUID AGENT (1.5 GAL.)
- 7 CARTRIDGE (101-20)
- 8 CARTRIDGE (101-10)
- 9 CARTRIDGE (101-30)
- 9A CARTRIDGE (LT-A-101-30)
- 9B DOUBLE TANK CARTRIDGE
- 10 TEST LINK
- 11 DOUBLE MICROSWITCH
- 12 HOSE ASSEMBLY
- 1100 DUCT NOZZLE (430913)
- 2W DUCT NOZZLE (419337)
- 1W NOZZLE ASSEMBLY (419336)
- 1F NOZZLE ASSEMBLY (419333)
- 1N NOZZLE ASSEMBLY (419335)
- 1/2N NOZZLE ASSEMBLY (419334)
- 3N NOZZLE ASSEMBLY (419338)
- 245 NOZZLE ASSEMBLY (419340)
- 230 NOZZLE ASSEMBLY (419339)
- 2120 NOZZLE ASSEMBLY (419343)
- 290 NOZZLE ASSEMBLY (419342)
- 260 NOZZLE ASSEMBLY (419341)
- 28 DETECTOR BRACKET
- 29 LOW TEMP FUSIBLE LINK
- 30 HIGH TEMP FUSIBLE LINK
- MGV MECHANICAL GAS VALVE
- EGV ELECTRICAL GAS VALVE
- 34 REMOTE MANUAL PULL STATION
- S SWIVEL ADAPTOR

**SPECIFICATIONS**

THE RESTAURANT FIRE SUPPRESSION SYSTEM SHALL BE THE PRE-ENGINEERED TYPE WITH A FIXED NOZZLE AGENT DISTRIBUTION NETWORK. IT SHALL BE LISTED WITH UNDERWRITERS LABORATORIES, INC. (UL)

THE SYSTEM SHALL BE CAPABLE OF AUTOMATIC DETECTION AND ACTUATION WITH LOCAL OR REMOTE MANUAL ACTUATION. ACCESSORIES SHALL BE AVAILABLE FOR MECHANICAL OR ELECTRICAL GAS LINE SHUT-OFF APPLICATIONS.

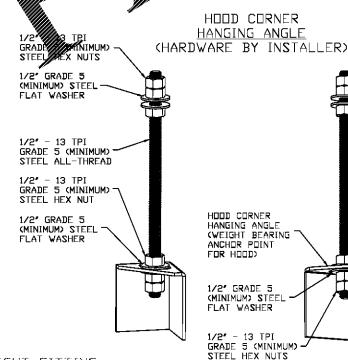
THE EXTINGUISHING AGENT SHALL BE A POTASSIUM CARBONATE, POTASSIUM ACETATE-BASED FORMULATION DESIGNED FOR FLAME KNOCKDOWN AND RECLEANMENT OF GREASE RELATED FIRES. IT SHALL BE AVAILABLE IN PLASTIC CONTAINERS WITH INSTRUCTIONS FOR LIQUID AGENT HANDLING AND USE.

THE REGULATED RELEASE MECHANISM SHALL BE COMPATIBLE WITH A FUSIBLE LINK DETECTION SYSTEM. THE FUSIBLE LINK SHALL BE SELECTED AND INSTALLED ACCORDING TO THE OPERATING TEMPERATURE IN THE VENTILATING SYSTEM. THE FUSIBLE LINK SHALL BE SUPPORTED BY A DETECTOR BRACKET/LINKAGE ASSEMBLY.

MANUFACTURER TRAINED PERSONNEL WILL TEST THE SYSTEM AND BE WITNESSED BY THE LOCAL AUTHORITY IF APPLICABLE. MECHANICAL GAS VALVE SHALL BE MANUAL RESET TYPE. COMPLIES WITH NFPA STANDARD 17A AND 96. PIPING SHALL BE BLACK IRON.

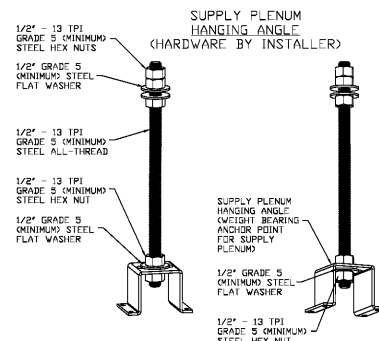
NOZZLE BLOW-OFF CAPS SHALL BE RUBBER. "QUICK-SEAL" ADAPTORS AT HOOD AND DUCT PENETRATIONS PRODUCE A LIQUID-TIGHT FITTING

The system shall have been tested to the UL Standard for Fire Extinguishing Systems for Protection of Restaurant Cooking Area, UL300, and Listed by Underwriters Laboratories, Inc. It shall be installed in accordance with the National Fire Protection Association Standard No. 17A Wet Chemical Extinguisher Systems, and No. 96 Standard for the Installation of Equipment for the Removal of Smoke and Grease Laden Vapors from Commercial Cooking Equipment, and comply with all local and/or state codes and standards.



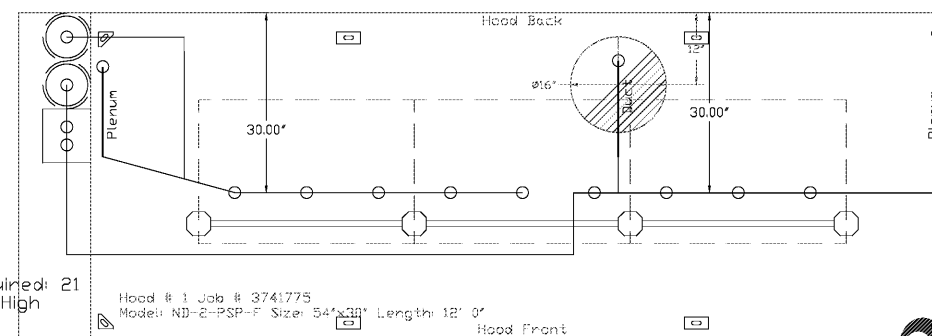
**ASSEMBLY INSTRUCTIONS**

HANGING ANGLE MUST BE SUPPORTED WITH 1/2" - 13 TPI GRADE 5 (MINIMUM) ALL-THREAD, SANDWICH HANGING ANGLES AND CEILING ANCHOR POINTS WITH 1/2" GRADE 5 (MINIMUM) STEEL FLAT WASHERS AND 1/2" - 13 TPI GRADE 5 (MINIMUM) HEX NUTS AS SHOWN. MUST USE DOUBLED HEX NUT CONFIGURATION ABOVE CEILING ANCHORS. SINGLE HEX NUT BENEATH HANGING ANGLE IS ACCEPTABLE FOR PSP HANGING ANGLES. MAINTAIN 1/4" OF EXPOSED THREADS BENEATH BOTTOM HEX NUT. TORQUE ALL HEX NUTS TO 57 FT-LBS.



**ASSEMBLY INSTRUCTIONS**

HANGING ANGLE MUST BE SUPPORTED WITH 1/2" - 13 TPI GRADE 5 (MINIMUM) ALL-THREAD, SANDWICH HANGING ANGLES AND CEILING ANCHOR POINTS WITH 1/2" GRADE 5 (MINIMUM) STEEL FLAT WASHERS AND 1/2" - 13 TPI GRADE 5 (MINIMUM) HEX NUTS AS SHOWN. MUST USE DOUBLED HEX NUT CONFIGURATION ABOVE CEILING ANCHORS. SINGLE HEX NUT BENEATH HANGING ANGLE IS ACCEPTABLE FOR PSP HANGING ANGLES. MAINTAIN 1/4" OF EXPOSED THREADS BENEATH BOTTOM HEX NUT. TORQUE ALL HEX NUTS TO 57 FT-LBS.

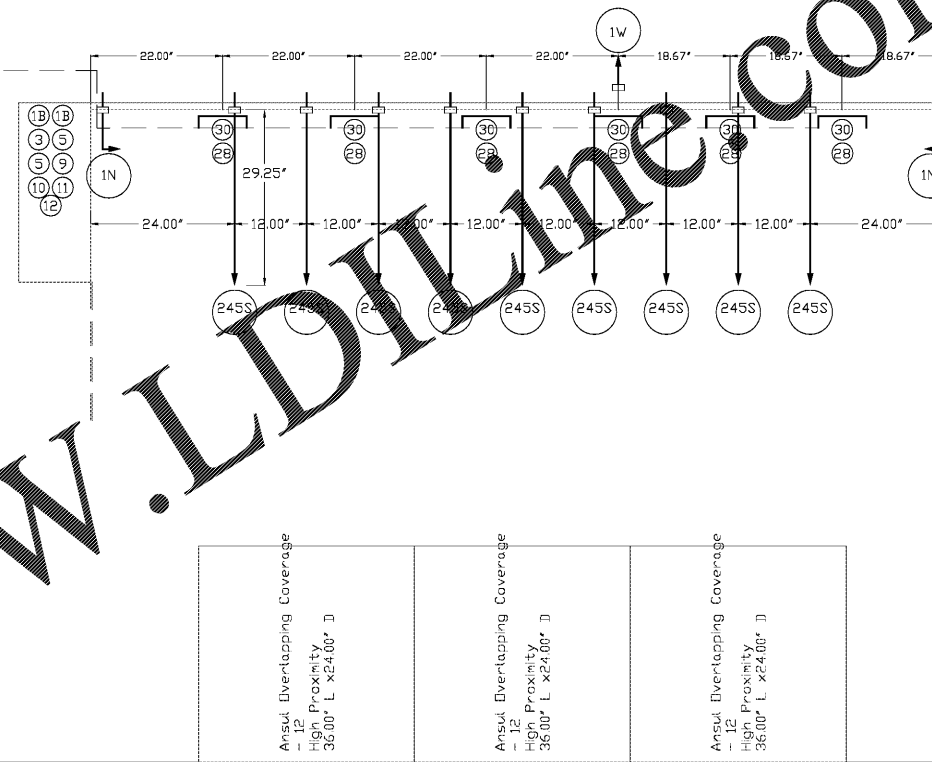


Job #: 3741775  
Job Name: Wingstop Largo FL #V050

System Size: ANSUL-3.0/3.0 Total FP required: 21  
Hood # 1 12' 0.00" Long x 54" Wide x 30" High  
Hood # 1 Size: 16" Dia.  
Hood # 1 Metal Blow-Off Caps included.

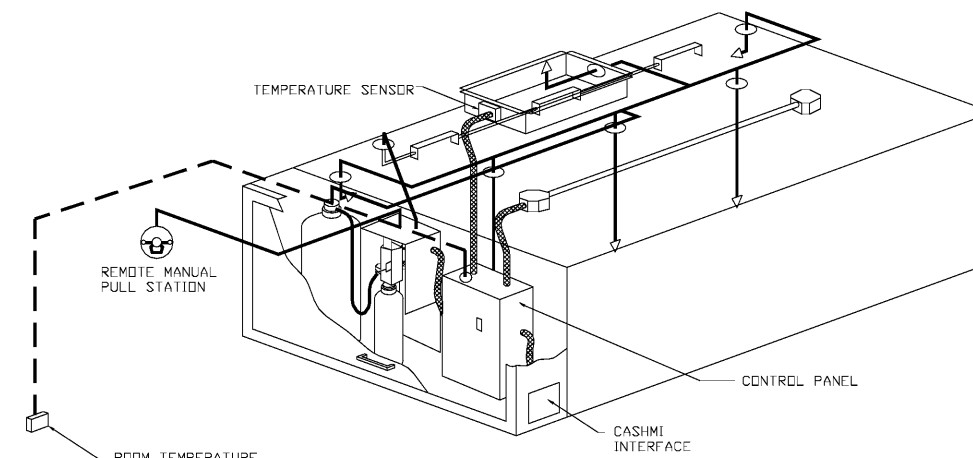
**LEGEND - FIRE CABINET ANSUL SYSTEM**

- 1A 1.5 GALLON TANK
- 1B 3 GALLON TANK
- 2 DEM AUTOMAN RELEASE
- 3 DEM REGULATED RELEASE
- 4 DEM REGULATED ACTUATOR
- 5 ANSULEX LIQUID AGENT (3 GAL.)
- 6 ANSULEX LIQUID AGENT (1.5 GAL.)
- 7 CARTRIDGE (101-20)
- 8 CARTRIDGE (101-10)
- 9 CARTRIDGE (101-30)
- 9A CARTRIDGE (LT-A-101-30)
- 9B DOUBLE TANK CARTRIDGE
- 10 TEST LINK
- 11 DOUBLE MICROSWITCH
- 12 HOSE ASSEMBLY
- 1100 DUCT NOZZLE (430913)
- 2W DUCT NOZZLE (419337)
- 1W NOZZLE ASSEMBLY (419336)
- 1F NOZZLE ASSEMBLY (419333)
- 1N NOZZLE ASSEMBLY (419335)
- 1/2N NOZZLE ASSEMBLY (419334)
- 3N NOZZLE ASSEMBLY (419338)
- 245 NOZZLE ASSEMBLY (419340)
- 230 NOZZLE ASSEMBLY (419339)
- 2120 NOZZLE ASSEMBLY (419343)
- 290 NOZZLE ASSEMBLY (419342)
- 260 NOZZLE ASSEMBLY (419341)
- 28 DETECTOR BRACKET
- 29 LOW TEMP FUSIBLE LINK
- 30 HIGH TEMP FUSIBLE LINK
- MGV MECHANICAL GAS VALVE
- EGV ELECTRICAL GAS VALVE
- 34 REMOTE MANUAL PULL STATION
- S SWIVEL ADAPTOR



ANSUL OVERLAPPING NOZZLE COVERAGE - OPTION 1

HOOKUP, PERMITTING, AND FINAL TESTING OF ANSUL SYSTEM PROVIDED BY CAPTIVE-AIRE SYSTEMS

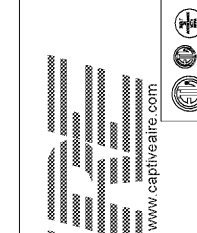


**TYPICAL CONTROL CENTER INSTALLATION**

CAPTIVE-AIRE HOOD PACKAGE AS SHOWN IS OWNER PROVIDED

**REVISIONS**

| DESCRIPTION | DATE |
|-------------|------|
|             |      |
|             |      |
|             |      |
|             |      |



**CAPTIVE-AIRE**  
www.captiveaire.com  
Dallas Office  
1901 Royal Lane Suite 101, DALLAS, TX, 75229 PHONE: (214) 220-3969 FAX: (214) 220-0069 EMAIL: reg45@captiveaire.com

Wingstop Largo FL #V050  
10125 Ulmerton Rd, Suite C,  
LARGO, FL, 33771

DATE: 3/5/2019

DWG.#: 3741775

DRAWN BY: CJP-REG45

SCALE: 3/4" = 1'-0"

MASTER DRAWING

SHEET NO. 2