

**GENERAL NOTES**

1. THESE NOTES COMPLEMENT THE DRAWINGS AND SHOULD NOT BE CONSIDERED INCLUSIVE OF ALL ITEMS.
2. WHERE A DETAIL IS SHOWN FOR ONE CONDITION, IT SHALL APPLY FOR ALL LIKE OR SIMILAR CONDITIONS, EVEN THOUGH NOT SPECIFICALLY SHOWN ON THE DRAWINGS.
3. THE CONTRACTOR IS RESPONSIBLE FOR MEANS, METHODS, AND SEQUENCES OF CONSTRUCTION TO MEET THE REQUIREMENTS OF THE CONSTRUCTION DOCUMENTS.
4. IT IS THE CONTRACTOR'S RESPONSIBILITY TO BE IN COMPLIANCE WITH ALL APPLICABLE OSHA REGULATIONS.
5. CONTRACTOR IS RESPONSIBLE FOR ALL TEMPORARY SHORING REQUIRED DURING CONSTRUCTION.
6. CONTRACTOR SHALL VERIFY ALL DIMENSIONS AND CONDITIONS BEFORE EXECUTING WORK; ENGINEER OF RECORD SHALL BE NOTIFIED OF ANY DISCREPANCIES BEFORE EXECUTING WORK.

**APPLICABLE CODES FOR DESIGN:**

1. FLORIDA BUILDING CODE: 2017 EDITION

**CLASSIFICATION OF BUILDING FOR RISK:**

1. RISK CATEGORY: II
2. SEISMIC FACTOR:  $I_e = 1.0$
3. SNOW FACTOR:  $I_s = 1.0$

**DESIGN LOADS:**

1. ROOF DEAD LOAD: 15 PSF
2. ROOF LIVE LOAD: 20 PSF & 300 LBS (NOT CONCURRENT)
3. WIND LOADS PER FBC 2017, ASCE 7-10
  - a. Basic Wind Speed (3 SECOND GUST)
    - i. Vult: 146 MPH
    - i. Vasd: 114 MPH
  - B. WIND EXPOSURE : B
  - C. INTERNAL PRESSURE COEFFICIENTS: +0.18, -0.18
  - D. COMPONENTS & CLADDING DESIGN
    - a. WALL PRESSURE
      - i. ULT: -51 PSF
      - i. ASD: -31 PSF
    - b. ROOF PRESSURE
      - i. ULT: -97 PSF
      - i. ASD: -59 PSF

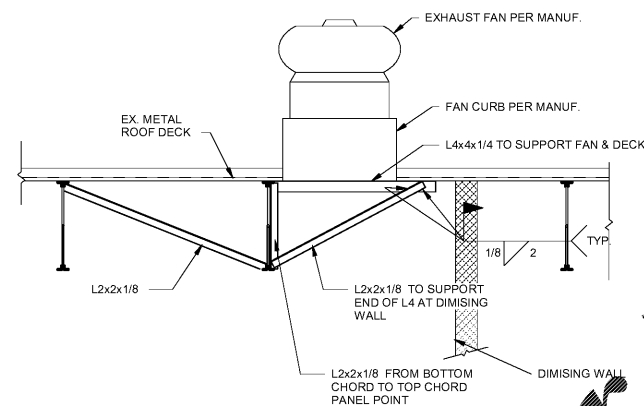
**CONCRETE & REINFORCING:**

1. ALL CONCRETE SHALL HAVE A MINIMUM 28 DAY COMPRESSIVE STRENGTH OF 3000 psi AND SHALL MEET THE FOLLOWING REQUIREMENTS:
  - A. GENERAL CONCRETE REQUIREMENTS:
    - a. PORTLAND CEMENT: ASTM C 150, TYPE I
    - b. FLY ASH, IF USED: ASTM C 618, CLASS F OR C, MAXIMUM 25%, BY WEIGHT, OF TOTAL CEMENTITIOUS MATERIAL.
    - c. GROUND GRANULATED BLAST-FURNACE SLAG (GGBS), IF USED: ASTM C 989, GRADE 100 OR 120, MAXIMUM 25%, BY WEIGHT, OF TOTAL CEMENTITIOUS MATERIAL.
    - d. COMBINED FLY ASH AND GGBS SHALL NOT EXCEED 33%, BY WEIGHT, OF TOTAL CEMENTITIOUS MATERIAL.
    - e. DO NOT USE ADMIXTURES CONTAINING CALCIUM CHLORIDE.
    - f. AIR-ENTRAINING ADMIXTURE: ASTM C 260 (AS NEEDED; FOLLOW MANUFACTURING DOSAGE)
    - g. WATER-REDUCING ADMIXTURE: ASTM C 494/C 494M, TYPE A (AS NEEDED; FOLLOW MANUFACTURING DOSAGE).
    - h. NORMAL WEIGHT AGGREGATES SHALL MEET ASTM C 33 WITH A MAXIMUM SIZE OF 1" UNLESS NOTED OTHERWISE ON PLANS
  - B. SLAB-ON-GRADE & REINFORCING REQUIREMENTS:
    - a. WELDED WIRE REINFORCEMENT SHALL MEET ASTM A 82 or ASTM A 185
    - b. DO NOT AIR-ENTRAIN SLAB CONCRETE
    - c. ENTRAPPED AIR CONTENT NOT TO EXCEED 3%
    - d. SLUMP LIMIT: 5 INCHES
    - e. MAXIMUM WATER / CEMENT RATIO: 0.50

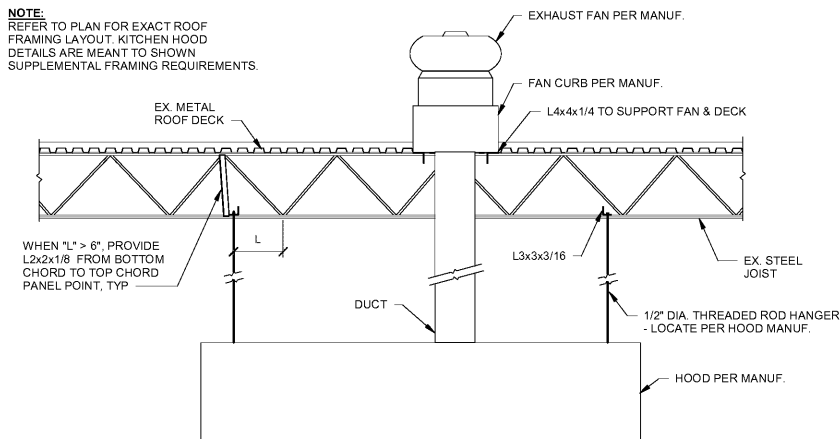
**STRUCTURAL STEEL:**

1. ALL ANGLES SHALL BE ASTM A36 ( $F_y=36$  ksi).
2. ALL STEEL SHALL RECEIVE ONE SHOP COAT OF PRIMER.

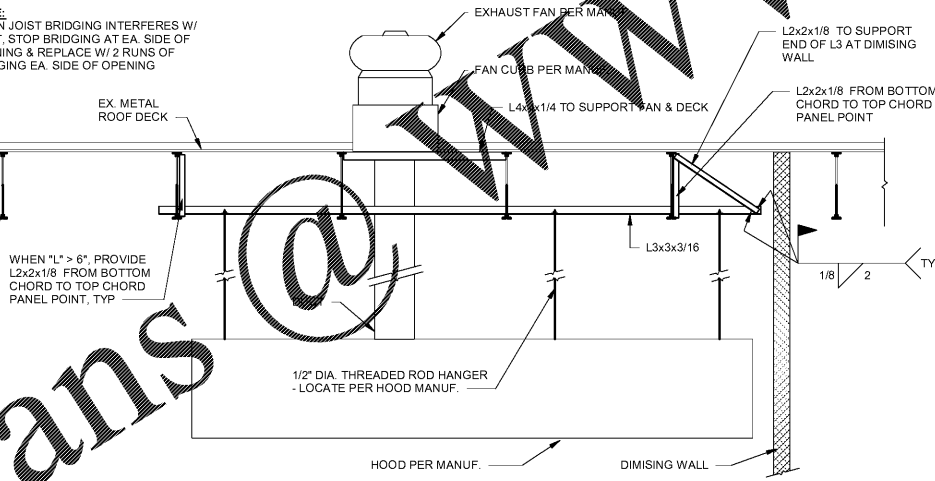
**2 EXHAUST FAN SUPPORT**  
S1.0 1/2" = 1'-0"



**3 KITCHEN HOOD DETAILS 1**  
S1.0 3/8" = 1'-0"



**1 TYPICAL PLAN ROOF OPENING AND RTU CURB SUPPORT**  
S1.0 1/2" = 1'-0"

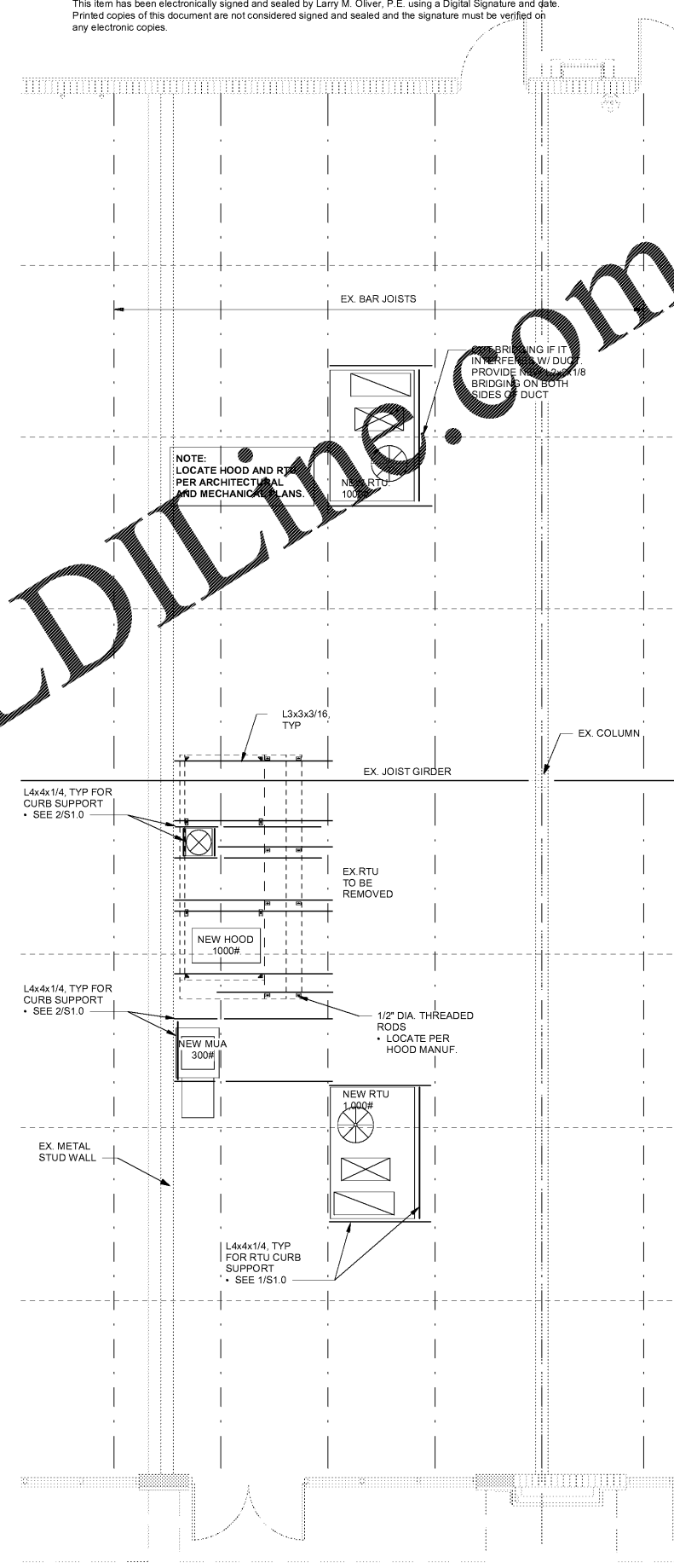


**NOTE:**  
REFER TO PLAN FOR EXACT ROOF FRAMING LAYOUT. KITCHEN HOOD DETAILS ARE MEANT TO SHOWN SUPPLEMENTAL FRAMING REQUIREMENTS.

**NOTE:**  
WHEN JOIST BRIDGING INTERFERES W/ DUCT, STOP BRIDGING AT EA. SIDE OF OPENING & REPLACE W/ 2 RUNS OF BRIDGING EA. SIDE OF OPENING

**NOTE:**  
WHEN "L" IS GREATER THAN 6", ADD A L2x2x1/8 TO THE NEAREST PANEL POINT ON THE OPPOSITE CHORD FROM THE LOAD (FOR LOADS APPLIED TO EITHER THE TOP OR BOTTOM CHORD) FOR CONCENTRATED LOADS GREATER THAN 300 lbs.

**FRAMING PLAN**  
1/4" = 1'-0"

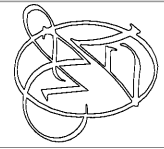


**MH STRUCTURES**  
STRUCTURAL ENGINEERING  
5077 Dallas Hwy Suite 201 Powder Springs, GA 30127  
(404) 495-4889  
www.mhstructures.com

DRAWN BY: MH  
CHECKED BY: LO  
DATE: 3/15/2019  
PROJECT: WS1904  
REVISION:  
REVISION:

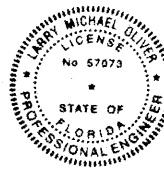
FRAMING PLAN  
DRAWING NUMBER  
**S1.0**

**WARNER ARCHITECTURAL ASSOCIATES**  
109 ANDERSON STREET SE, SUITE 105  
MARIETTA, GA 30060  
PH: 678.290.9200  
EMAIL: INFO@WARNERARCHASSOC.COM



**KLING STUBBINS**  
10125 ULMERTON RD.  
LARGO, FL 33771 (SUITE C)  
STORE #V050

THIS DOCUMENT, THE IDEAS AND DESIGNS INCORPORATED HEREIN, AS AN INSTRUMENT OF PROFESSIONAL SERVICE, IS THE PROPERTY OF WARNER ARCHITECTURAL ASSOCIATES AND IS NOT TO BE USED, IN WHOLE OR IN PART, FOR ANY OTHER PROJECT WITHOUT THE WRITTEN AUTHORIZATION OF WARNER ARCHITECTURAL ASSOCIATES, INC.



This item has been electronically signed and sealed by Larry M. Oliver, P.E. using a Digital Signature and date. Printed copies of this document are not considered signed and sealed and the signature must be verified on any electronic copies.

Order Plans @ [www.LDiline.com](http://www.LDiline.com)