



ARCHITECTS
WM2A.COM
348 COTTON AVENUE
SUITE 500, PO BOX 110
MACON, GEORGIA 31201



CENTER PARK RESTROOMS
FACILITIES AND SHADE
PAVILION

City of Centerville

103 E CHURCH ST
CENTERVILLE, GA
31028

REVISIONS

DATE DESCRIPTION

Date: 11/04/19

Drawn By: FHG

Checked By: JHM

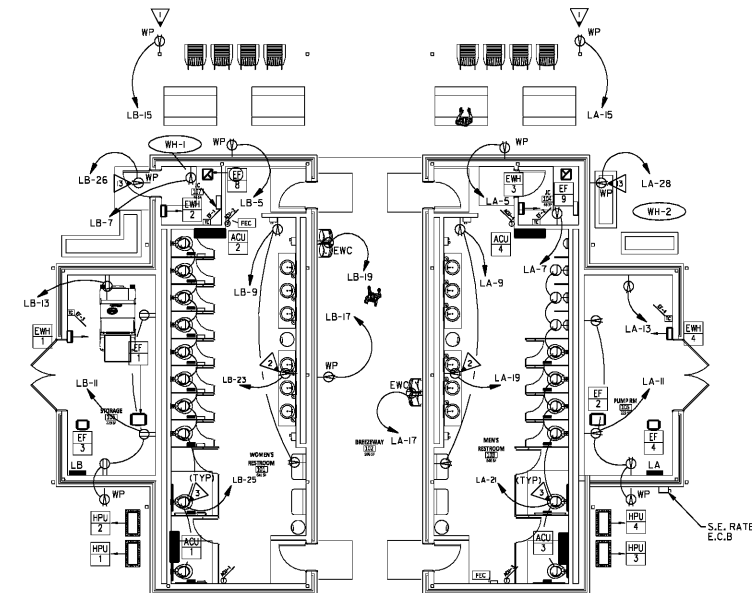
Project Number: 2018-077

Drawing Name:

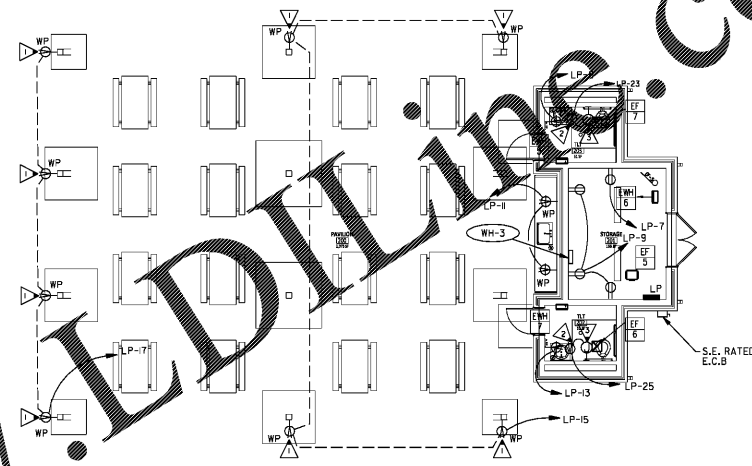
FLOOR PLAN -
POWER & SYSTEMS

Drawing Number:

E-3



1 RESTROOM FACILITY - POWER AND SYSTEMS
E-3 SCALE: 1/8"=1'-0"



2 SHADED PAVILION FACILITY - POWER AND SYSTEMS
E-3 SCALE: 1/8"=1'-0"

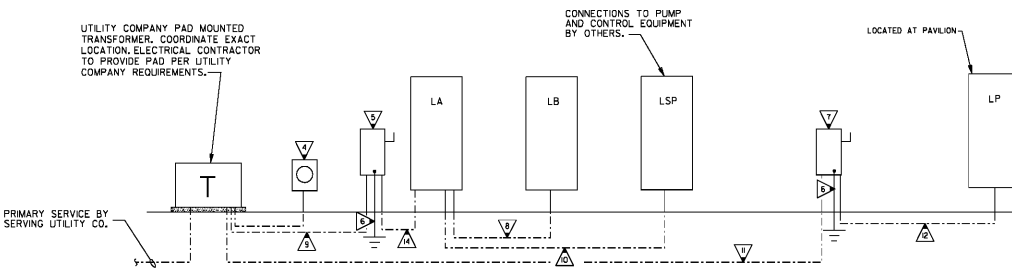
DESCRIPTION	120		240		PANEL	LA	LOCATION	PUMP ROOM	DESCRIPTION
	VOLTS	AMPS	VOLTS	AMPS					
LIGHTS	500	20	1	1	A	2	2	20	500 HPU-3/ACU-3
EXTERIOR LTS	200	20	1	3	B	4	2	20	500 HPU-3/ACU-3
RECEPTACLES	600	20	1	5	A	6	2	20	500 HPU-4/ACU-4
RECEPTACLES	1200	20	1	7	B	8	2	20	500 HPU-4/ACU-4
RECEPTACLES	600	20	1	9	A	10	1	20	300 EF-2
RECEPTACLES	600	20	1	1	B	2	1	20	300 EF-4
RECEPTACLES	1200	20	1	13	A	4	1	20	300 EF-9
RECEPTACLES	200	20	1	5	B	16	1	20	1500 EWH-3
NEW	20	17	A	8	2	25		2000	2000 EWH-4
RECEPT/FAUCET	1200	20	1	19	B	20		2000	2000 EWH-4
FLUSHMETER	1200	20	1	21	A	22	2	60	5000 WH-2
POLE LIGHTS	400	20	1	23	B	24		5000	5000 WH-1
POLE RECEPT.	800	20	1	25	A	26	1	20	500 FAN
				27	B	28	1	20	500 RECEPTACLE
				29	A	30			
LSP	19200	200	2	33	A	34	1	20	SPARE
LB	19200	200	2	35	B	36	1	20	SPARE
	11900	200	2	37	A	38	1	20	SPARE
	1800	20	1	39	B	40	1	20	SPARE
TOTALS	43400	42900					2300	1200	

DESCRIPTION	120		240		PANEL	LB	LOCATION	STORAGE	DESCRIPTION
	VOLTS	AMPS	VOLTS	AMPS					
LIGHTS	200	20	1	1	A	2	2	20	500 HPU-3/ACU-3
LIGHTS	400	20	1	3	B	4	2	20	500 HPU-3/ACU-3
RECEPTACLES	200	20	1	5	A	6	2	20	500 HPU-4/ACU-4
RECEPTACLES	1200	20	1	7	B	8	2	20	500 HPU-4/ACU-4
RECEPTACLES	600	20	1	9	A	10	1	20	300 EF-2
RECEPTACLES	600	20	1	1	B	2	1	20	300 EF-4
RECEPTACLES	1200	20	1	13	A	4	1	20	300 EF-9
RECEPTACLES	1200	20	1	15	B	16	2	25	2000 EWH-3
RECEPTACLES	200	20	1	17	A	18		2000	2000 EWH-4
*NEW	1000	20	1	19	B	20		2000	2000 EWH-4
EXTERIOR LTS	200	20	1	21	A	22	2	60	5000 WH-2
RECEPT/FAUCET	1200	20	1	23	B	24		5000	5000 WH-1
FLUSHMETER	1200	20	1	25	A	26	1	20	5000 WH-1
FAN	1000	20	1	27	B	28	1	20	500 RECEPTACLE
EXTERIOR LTS	200	20	1	29	A	30			
SPACE				31	B	32			
SPACE				33	A	34	20		
SPACE				35	B	36	1	20	
SPACE				37	A	38	1	20	
SPACE				39	B	40	1	20	
TOTALS	7320	7200					1800	1200	

DESCRIPTION	120		240		PANEL	LP	LOCATION	PAVILION	DESCRIPTION
	VOLTS	AMPS	VOLTS	AMPS					
LIGHTS	200	20	1	1	A	2	1	20	300 EF-5
EXTERIOR RECEPT.	600	20	1	3	B	4	1	20	SPARE
RECEPTACLES	1500	20	1	5	A	6	1	20	SPARE
RECEPTACLES	1500	20	1	7	B	8	2	20	1500 EWH-5
RECEPTACLES	600	20	1	9	A	10	1	20	1500 EWH-6
RECEPTACLES	600	20	1	1	B	2	25	2400	1500 EWH-6
RECEPTACLES	1500	20	1	13	A	4		2400	1500 EWH-7
RECEPTACLES	800	20	1	15	B	16	2	20	1500 EWH-7
RECEPTACLES	400	20	1	17	A	18		1500	1500 EWH-8
RECEPTACLES	400	20	1	19	B	20	2	60	5000 WH-3
EXTERIOR LTS	200	20	1	21	A	22	2	60	5000 WH-3
RECEPT/FAUCET	500	20	1	23	B	24	2	20	1500 FAN
RECEPT/FAUCET	500	20	1	25	A	26	1	20	500 FAN
FAN	500	20	1	27	B	28	1	20	500 SPACE
POLE LIGHTS	400	20	1	29	A	30	1		500 SPACE
POLE RECEPT.	800	20	1	31	B	32	1	20	500 SPACE
POLE LIGHTS	500	20	1	33	A	34	1	20	500 SPACE
POLE RECEPT.	1000	20	1	35	B	36	1	20	500 SPACE
				37	A	38	1	20	500 SPACE
				39	B	40	1	20	500 SPACE
TOTALS	5800	6000					2700	3000	

UNIT NAME	VOLTAJE/ PHASE	CIRCUIT BREAKER	PANEL NAME/ CIRCUIT NUMBER	FEEDER	DISCONNECT	SWITCH	NOTES
HPU-1/ACU-1	240V/1Ø	20A/2P	LA-2	4*Ø, 1/2" N.C.	3ØA/2P/3Ø	I	
HPU-2/ACU-2	240V/1Ø	20A/2P	LA-5	4*Ø, 1/2" N.C.	3ØA/2P/3Ø	I	
HPU-3/ACU-3	240V/1Ø	20A/2P	LB-2	4*Ø, 1/2" N.C.	3ØA/2P/3Ø	I	
HPU-4/ACU-4	240V/1Ø	20A/2P	LB-6	4*Ø, 1/2" N.C.	3ØA/2P/3Ø	I	
EF-1	120V/1Ø	20A/1P	LA-1	3*Ø, 1/2" N.C.	MOTOR RATED SWITCH L3	I	
EF-2	120V/1Ø	20A/1P	LA-3	3*Ø, 1/2" N.C.	MOTOR RATED SWITCH L3	I	
EF-3	120V/1Ø	20A/1P	LA-4	3*Ø, 1/2" N.C.	MOTOR RATED SWITCH L3	I	
EF-4	120V/1Ø	20A/1P	LB-12	3*Ø, 1/2" N.C.	MOTOR RATED SWITCH L3	I	
EF-5	120V/1Ø	20A/1P	LP-13	3*Ø, 1/2" N.C.	MOTOR RATED SWITCH L3	I	
EF-6	120V/1Ø	20A/1P	LP-14	3*Ø, 1/2" N.C.	MOTOR RATED SWITCH L4	I	
EF-7	120V/1Ø	20A/1P	LP-15	3*Ø, 1/2" N.C.	MOTOR RATED SWITCH L4	I	
EF-8	120V/1Ø	20A/1P	LP-16	3*Ø, 1/2" N.C.	MOTOR RATED SWITCH L6	I	
EF-9	120V/1Ø	20A/1P	LP-17	3*Ø, 1/2" N.C.	MOTOR RATED SWITCH L6	I	
EWH-1	240V/1Ø	25A/2P	LA-18	4*Ø, 3/4" N.C.	3ØA/2P	I	
EWH-2	240V/1Ø	25A/2P	LA-19	4*Ø, 3/4" N.C.	3ØA/2P	I	
EWH-3	240V/1Ø	25A/2P	LA-20	4*Ø, 3/4" N.C.	3ØA/2P	I	
EWH-4	240V/1Ø	25A/2P	LA-21	4*Ø, 3/4" N.C.	3ØA/2P	I	
EWH-5	240V/1Ø	25A/2P	LA-22	4*Ø, 3/4" N.C.	3ØA/2P	I	
EWH-6	240V/1Ø	25A/2P	LA-23	4*Ø, 3/4" N.C.	3ØA/2P	I	
EWH-7	240V/1Ø	25A/2P	LA-24	4*Ø, 3/4" N.C.	3ØA/2P	I	
WH-1	240V/1Ø	60A/2P	LA-25	3*Ø, 1ØØ, 3/4" N.C.	6ØA/2P	I	
WH-2	240V/1Ø	60A/2P	LA-26	3*Ø, 1ØØ, 3/4" N.C.	6ØA/2P	I	
WH-3	240V/1Ø	60A/2P	LP-20	3*Ø, 1ØØ, 3/4" N.C.	6ØA/2P	I	
EWC	120V/1Ø	20A/1P	LA-9	3*Ø, 1/2" N.C.	MOTOR RATED SWITCH I	I	
LWC	120V/1Ø	20A/1P	LB-17	3*Ø, 1/2" N.C.	MOTOR RATED SWITCH I	I	

NOTES:
1. SEE MECHANICAL FOR EXACT CONTROL REQUIREMENTS.
2. INDOOR UNIT POWERED VIA OUTDOOR UNIT. PROVIDE MOTOR RATED SWITCH AT INDOOR UNIT.
3. FAN TO BE CONTROLLED BY 365 DAY DIGITAL TIME CLOCK. FAN SHALL CONTINUOUSLY RUN 24/7.
4. FAN TO BE INTERLOCKED WITH LIGHTS SO THAT FAN COMES ON WHEN LIGHTS ARE ON. PROVIDE 10 MINUTE TIME DELAY.
5. FAN SHALL BE CONTROLLED BY LINE VOLTAGE THERMOSTAT.
6. FAN SHALL BE CONTROLLED BY A SWITCH LOCATED IN ROOM IT SERVES.



3 POWER RISER DIAGRAM
E-3 NOT TO SCALE

WWW.LDLINE.COM