



ARCHITECTS
WM2A.COM
348 COTTON AVENUE
SUITE 500, PO BOX 110
MACON, GEORGIA 31201



**CENTER PARK RESTROOM
FACILITIES AND SHADE
PAVILION**

City of Centerville

103 E CHURCH ST
CENTERVILLE, GA
31028

REVISIONS		
#	DATE	DESCRIPTION

© 2019, WMA Architects/Planners, Inc.
All WMA Architects These drawings, as
instruments of service, remain the property
of the Architect. Unauthorized use or
reproduction is forbidden.

Date: 11/04/19

Drawn By: DRW

Checked By: CHK

Project Number: 2018-077

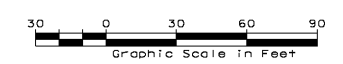
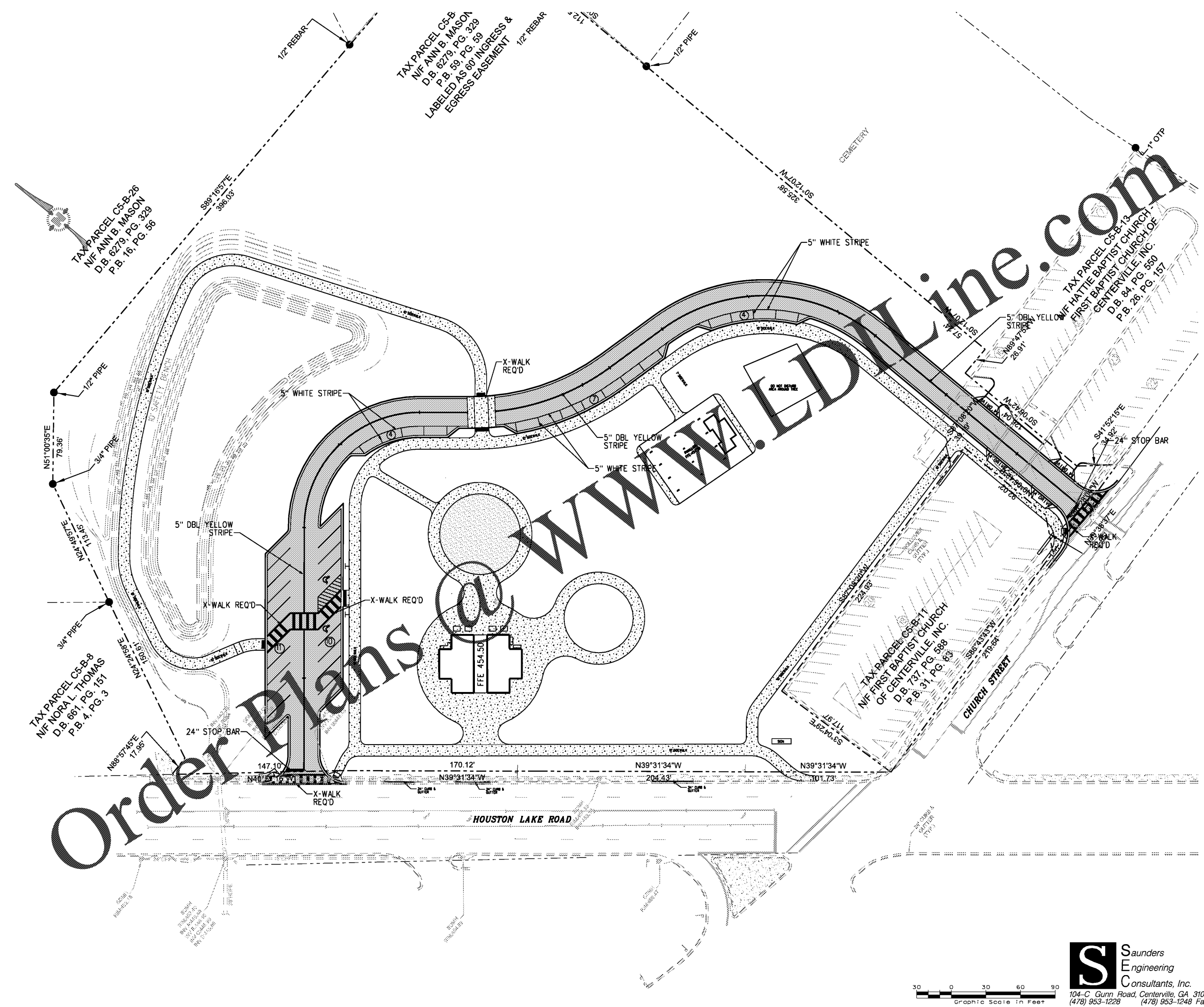
Drawing Name:

**SIGNING
AND MARKING
PLAN**

Drawing Number:

C-4

Project Status 12/14/2011 11:47:17 AM



S Saunders
Engineering
Consultants, Inc.
104-C Gunn Road, Centerville, GA 31028
(478) 953-1228 (478) 953-1248 Fax

Order Plans @ www.edline.com

TAX PARCEL C5-B-26
N/F ANN B. MASON
D.B. 6279, PG. 329
P.B. 16, PG. 56

TAX PARCEL C5-B
N/F ANN B. MASON
D.B. 6279, PG. 329
P.B. 59, PG. 59
LABELLED AS 800' INGRESS &
EGRESS EASEMENT

TAX PARCEL C5-B-8
N/F NORAL THOMAS
D.B. 661, PG. 151
P.B. 4, PG. 3

TAX PARCEL C5-B-11
N/F FIRST BAPTIST CHURCH
OF CENTERVILLE, INC.
D.B. 737, PG. 588
P.B. 31, PG. 63

TAX PARCEL C5-B-13
N/F HATTIE BAPTIST CHURCH,
FIRST BAPTIST CHURCH OF
CENTERVILLE, INC.
D.B. 84, PG. 550
P.B. 26, PG. 157

HOUSTON LAKE ROAD

CHURCH STREET

CEMETERY

Order Plans @ www.edline.com