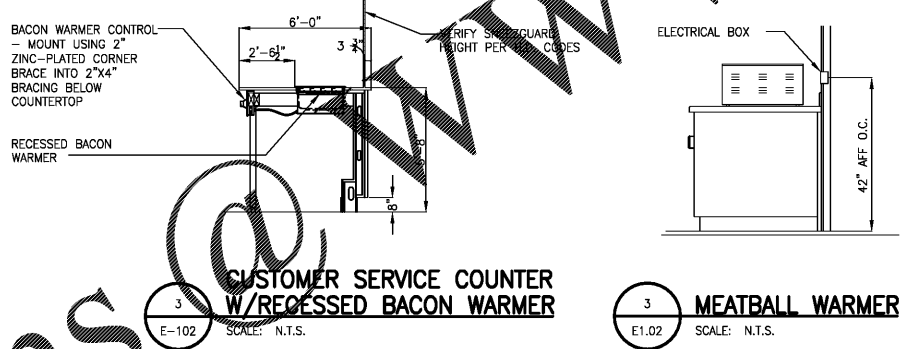


1 POWER PLAN
E1.02 SCALE: 1/4"=1'-0"

LEGEND			
SYMBOL	DESCRIPTION	SYMBOL	DESCRIPTION
---	CONDUIT CONCEALED ABOVE CEILING OR IN WALL WHENEVER POSSIBLE.	SS	THREE WAY SWITCH
---	CONDUIT CONCEALED IN OR BELOW FLOOR.	ΦC	NO DESIGNATION - FLUSH WALL 20A/125V/1PH/3W, NEMA 5-20R, DUPLEX RECEPTACLE C - FLUSH WITH CEILING. MTG..
A-2	HOME RUN TO PANELBOARD SHOWING CIRCUIT DESIGNATION, INDICATING PANEL AND CIRCUIT BREAKER NUMBER WITHIN THE PANEL... BREAKER LOCATIONS MAY BE REARRANGED TO PERMIT USE OF COMMON NEUTRAL CONDUCTOR.	ΦIG	20A/125V/1PH/3W, NEMA 5-20R, ISOLATED GROUNDING TYPE DUPLEX RECEPTACLE
⊙	ELECTRIC MOTOR CONNECTION.	Φ	30A/125V/1PH/3W, NEMA 5-30R, RECEPTACLE
+ 44"	MOUNTING HEIGHT DESIGNATION IN INCHES ABOVE FINISHED FLOOR TO CENTERLINE... WHEN INDICATED ON DRAWINGS SUPERSEDES STANDARD MOUNTING HEIGHT IN LEGEND.	ΦR	ROOF MOUNTED OUTLET IN W/P HOUSING - GFI
A.F.F.	ABOVE FINISHED FLOOR	ΦGFI	20A/125V/1PH/3W, NEMA 5-20R, DUPLEX GFCI RECEPTACLE @ 18" AFF. UNLESS OTHERWISE NOTED.
A.B.S.	ABOVE BACKSPASH	Φ	QUAD OUTLET (DOUBLE DUPLEX, 2-GANG ASSEMBLY)
□	NON-FUSED DISCONNECT SWITCH	⊕	208V/1PH/20A, SEE INDIVIDUAL EQUIPMENT SPEC. SHEETS FOR PLUG TYPE.
□	FUSED DISCONNECT SWITCH	⊕	208V/3PH, RATING AS NOTED. SEE INDIVIDUAL EQUIPMENT SPEC. SHEETS FOR PLUG TYPE.
□	JUNCTION BOX.	▽	TELEPHONE OUTLET.
■	ELECTRIC PANELBOARD.	△	DATA OUTLET.
□	EQUIPMENT BACKBOARD.	#	NUMBER BESIDE DEVICE INDICATES CIRCUIT NUMBER
S	SINGLE POLE SWITCH	F	FIRE ALARM HORN/SSTROBE
F	FIRE ALARM HORN/SSTROBE	F	FIRE ALARM PULL STATION
F	FIRE ALARM STROBE	⊕	SMOKE DETECTOR
⊕	CARBON MONOXIDE DETECTOR	⊕	DUCT SMOKE DETECTOR
MM	ADDRESSABLE MONITOR MODULE	IRM	ADDRESSABLE RELAY MODULE



GENERAL NOTES

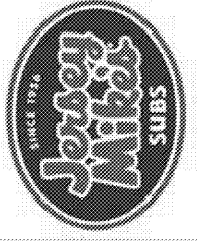
- BRANCH CIRCUIT WIRING SHALL BE AS FOLLOWS:
 - LIGHTING AND POWER NETWORKS: (120/208V, 3φ, 4W)
 - 100 FEET OR LESS:
 - PHASE - 3#12 AWG
 - NEUTRAL - 1#12 AWG
 - GROUND - 1#12 AWG
 - GREATER THAN 100 FEET: INCREASE ALL CONDUCTORS BY ONE WIRE GAUGE SIZE.
 - TWO NETWORKS MAXIMUM PER CONDUIT.
- PROVIDE SINGLE GANG JUNCTION BOX FOR EACH TELEPHONE AND/OR DATA OUTLET WITH 3/4" C. STUBBED-UP TO 6" WALL ABOVE PARTITION OR LAY-IN CEILING. PROVIDE BLANK COVERPLATE ON EACH OUTLET.
- MINIMUM CONDUIT SIZE SHALL BE 3/4", UNLESS OTHERWISE NOTED OR INDICATED.
- VERIFY ALL LIGHTING FIXTURE TYPES, LOCATIONS AND NUMBER WITH OWNER AND ARCHITECTURAL DRAWINGS PRIOR TO ROUGH-IN.
- PROVIDE 3/4" C FROM MANAGER'S DESK TO CASH REGISTER. EXTENSION OF TWO (2) CAT 5 DATA LINES.
- ALL 120 VOLT, SINGLE PHASE, 15 AND 20 AMP RECEPTACLES INSTALLED OUTDOORS, IN BATHROOMS, KITCHENS AND GARAGE/ROOF/TOP AREAS SHALL HAVE GROUND-FAULT CIRCUIT INTERRUPTER PROTECTION.
- EXPOSED CONDUITS WITHIN FOOD PREP AREA MUST HAVE SMOOTH SURFACE FOR CLEANING PER HEALTH DEPARTMENT REQUIREMENTS AND SHALL BE STANDARD METAL CONDUIT.
- CONDUITS BELOW SLAB SHALL BE PVC CONDUITS. ENCLOSED CONDUITS CAN EITHER BE METAL CONDUITS OR FLEXIBLE CONDUITS. ANY EXPOSED CONDUITS SHALL BE METAL CONDUIT ONLY.
- MAIN FEEDERS FROM SERVICE CONNECTION TO PANEL AND FROM MAIN PANEL TO SUB PANELS SHALL BE STANDARD METAL CONDUIT.
- THE LOW VOLTAGE CONTRACTOR SHALL PROVIDE REQUIRED LOW VOLTAGE WIRING FOR SPEAKERS, RECEIVERS, INTERNET AT POS ON SHELF AND VOICE/FAX.
- ALL SWITCHES, OUTLETS AND COVER PLATES SHALL BE ORDERED IN WHITE.

KEY NOTES

- PROVIDE 1" C. WITH PULL WIRE FROM INTERNET MODEM, CABLE AND PHONE SHELF TO P.O.S.
- MOTOR RATED SWITCH SHALL BE PROVIDED WITH HOOD. POWER KEH-2 SHALL RUN THROUGH KEH-2
- KEH-1 SHALL BE CONNECTED TO A FIRE HORN/SSTROBE HOOD ACCESSORY THRU A MICRO SWITCH PROVIDED BY THE HOOD MANUFACTURER. HORN/SSTROBE MAY BE OMITTED WHERE NOT REQUIRED BY AUTHORITY HAVING JURISDICTION.
- MOUNT OUTLET FOR THE MEATCASE ON THE LOW WALL BELOW SLICER. PVC CHASE IN KNEE WALL FOR MEAT CASE CORD TO PASS THROUGH MILL WORK TO OUTLET. PROVIDE CABLE RACEWAY CORD HIDER FROM TOP OF MEATCASE TO BELOW COUNTERTOP. MODIFY COUNTERTOP AS REQUIRED.
- SERVICE AREA AND DRINK STATION RECEPTACLE HEIGHT SHALL BE MEASURED FROM SUBFLOOR TO BOTTOM OF BOX.
- FIELD VERIFY LOCATION FOR DINING ROOM CONVENIENCE RECEPTACLES.
- RECEPTACLES AT P.O.S SHALL BE SURGE PROTECTED. PROVIDE SURGE PROTECTION. SURGE PROTECTOR SHALL BE EATON, 120/208V, 100KA NOM. DISCHARGE AMPS 20KA, 200KA AMPS SC RATED OR APPROVED EQUAL.
- RUN CONDUIT TO FRONT COUNTER THROUGH WALL NEXT TO BEVERAGE COUNTER.
- ELECTRICAL DISCONNECT PROVIDED WITH EQUIPMENT, 30A/1P/3R.
- SHOW WINDOW RECEPTACLES SHALL BE SPACED AT NOT MORE THAN 12'-0" O.C. AND INSTALLED WITHIN 18" ABOVE TOP OF WINDOWS PER NEC 210.62.
- FIELD COORDINATE EXACT LOCATION OF RECEPTACLE. FIELD COORDINATE EXACT ELECTRICAL REQUIREMENTS.
- EXTEND CONDUIT FOR TELEPHONE SERVICE TO TENANT TELEPHONE BACKBOARD IF REQUIRED.
- LOCATE OUTLETS FOR 2' AND 4' DROP-INS TO EITHER IMMEDIATE RIGHT OR LEFT OF THE UNIT SO THAT OUTLET IS ACCESSIBLE. DO NOT PLACE OUTLETS DIRECTLY BEHIND THE DROP-INS.

LANDLORD'S SCOPE:
THE FOLLOWING ITEMS ARE BY THE LANDLORD. THIS LIST IS FOR REFERENCE ONLY, THE CONTRACTOR SHALL COORDINATE EXACT SCOPE OF LANDLORD WORK WITH FRANCHISEE AND WITH LANDLORD:
1. (1) 200A PANELBOARD

THE CONTENTS OF THIS DRAWING WILL REMAIN THE PROPERTY OF THOMAS F. TEDROW, AIA. ITS CONTENTS, INCLUDING ALL INFORMATION, SHALL NOT BE REPRODUCED USING ANY MEANS WITHOUT EXPRESSED WRITTEN CONSENT AND/OR PERMISSION FROM THOMAS F. TEDROW, AIA.



THOMAS F. TEDROW, AIA
ARCHITECT
2866 ADAMS BROOKWAY
SMELVILLE, OH 43081
PH. 678.777.9548
E-MAIL: tom.tedrow@tdroweiga.com

JERSEY MIKE'S
THE PALLADIUM SHOPPING CENTER
4117 BRIAN JORDAN PLACE
HIGH POINT, NC 27265



ARCHITECT/ENGINEER STAMP

REV. NO.	DATE	DESCRIPTION

PROJECT NO. JMW-C-200
DRAWN BY: AK
CHECKED BY: AR
ISSUE DATE: 11/04/19

POWER PLAN

E1.02

