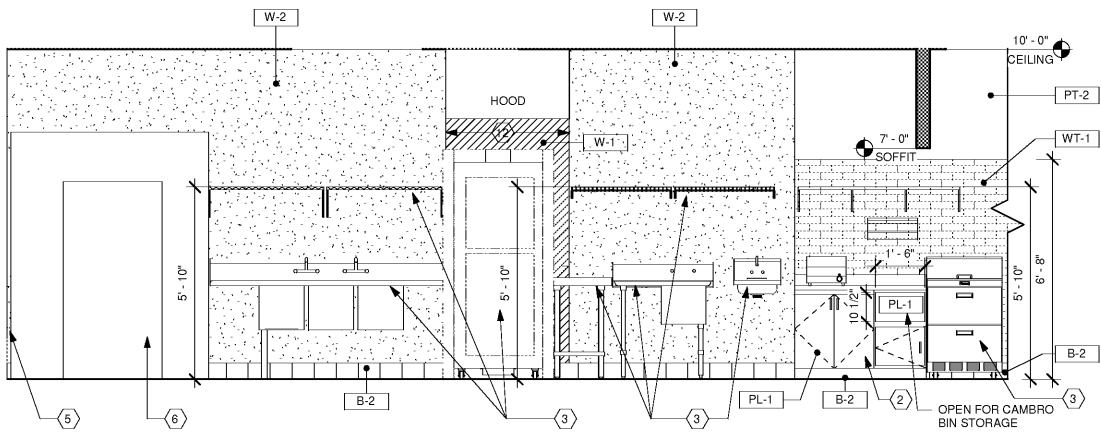
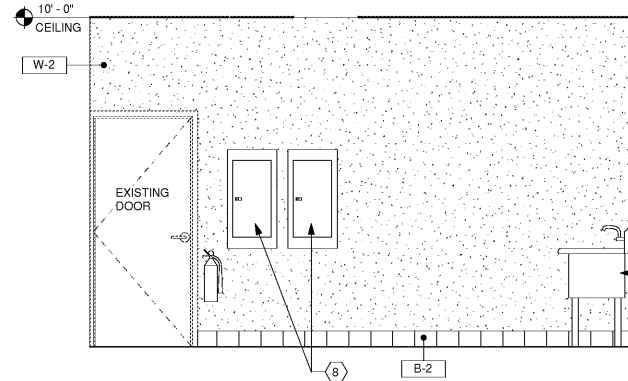


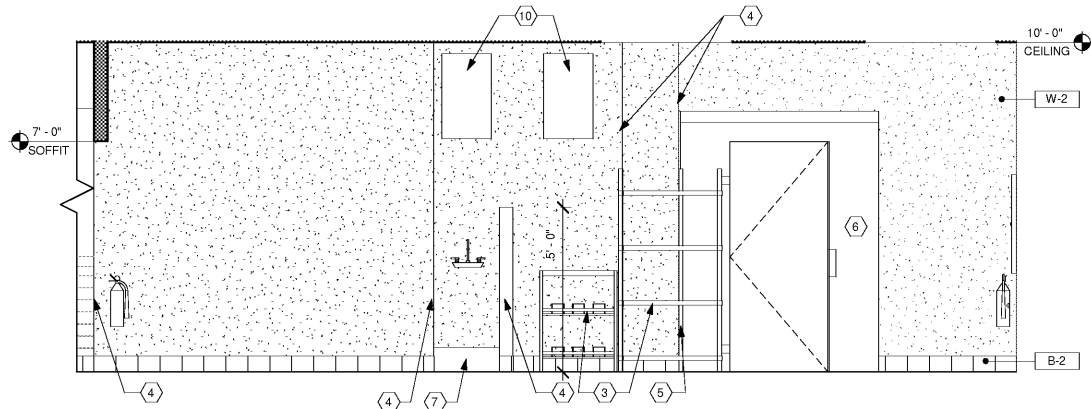
1/15/2019 10:51:06 AM
 D:\Dorbox (Tedrow Design)\Tedrow Design Team Folder\Jersey Mike's\JMNC-02_Highpoint, NC - RodgerPerrill\MNC-102_Highpoint, NC 10-12-19.rvt



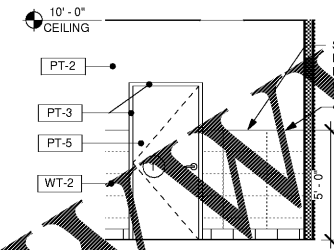
1 ELEV. @ BOH 3-COMP SINK
 A3.1 3/8" = 1'-0"



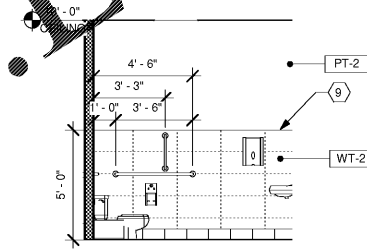
2 ELEV. @ BOH BACK DOOR/ELEC PANELS
 A3.1 3/8" = 1'-0"



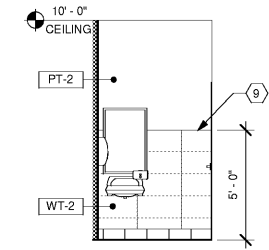
3 ELEV. @ BOH FREEZER/MOP SINK
 A3.1 3/8" = 1'-0"



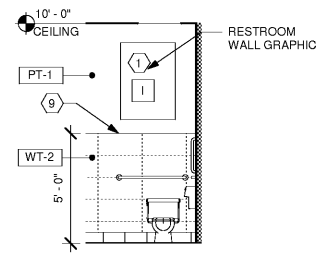
4 ELEV. @ MEN'S RR DOOR
 A3.1 1/4" = 1'-0"



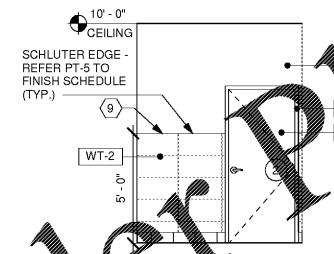
5 ELEV. @ MEN'S RR SIDE TOILET
 A3.1 1/4" = 1'-0"



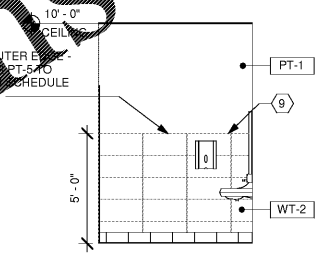
6 ELEV. @ MEN'S RR SINK
 A3.1 1/4" = 1'-0"



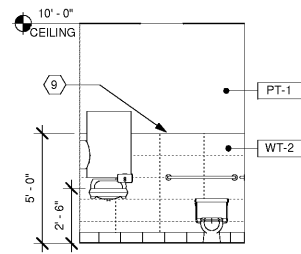
7 ELEV. @ MEN'S RR TOILET
 A3.1 1/4" = 1'-0"



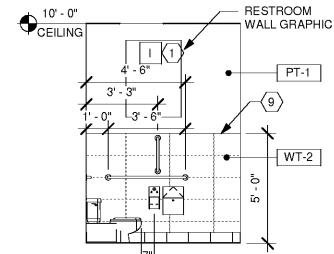
8 ELEV. @ WOMEN'S RR DOOR
 A3.1 1/4" = 1'-0"



9 ELEV. @ WOMEN'S RR SIDE VANITY
 A3.1 1/4" = 1'-0"



10 ELEV. @ WOMEN'S RR TOILET
 A3.1 1/4" = 1'-0"



11 ELEV. @ WOMEN'S RR TOILET SIDE
 A3.1 1/4" = 1'-0"

INTERIOR ELEV. KEY NOTES

- 1 WALL GRAPHICS BY OWNER. REFER TO EQ1.0
- 2 MILLWORK - SEE DET. 5/A4.0 AND OTHER DETAILS; SHT. A4.0.
- 3 EQUIPMENT. SEE EQ1.0.
- 4 PROVIDE 6" TALL 18 GA. STAINLESS STL. CORNER GUARD FROM TOP OF BASE
- 5 CLOSURE CORNER TRIM TO MATCH WALK-IN COOLER. FURNISHED AND INSTALLED BY KITCHEN EQUIPMENT SUPPLIER.
- 6 COOLER OR FREEZER- SEE EQUIPMENT SCHEDULE ON SHT. EQ1.0 FOR SPECIFICATIONS.
- 7 MOP SINK. SEE PLUMBING DWGS.
- 8 ELECTRICAL PANELS - SEE ELECTRICAL DRAWINGS.
- 9 RESTROOM WALL TILE MUST EXTEND ABOVE THE WALL SWITCH.
- 10 WATER HEATERS. SEE PLUMBING DRAWINGS.
- 11 STEEL SUPPORT POSTS - SEE DET. 5/A4.0.
- 12 STAINLESS STEEL WALL FINISH AT GRILLE/HOOD.

GENERAL SHEET NOTES:

1. SEE SHEET EQ1.0 FOR ALL ARTWORK AND SIGNAGE SPECIFICATIONS IN GRAPHICS SCHEDULE. GRAPHICS TAG: [XX]
2. SEE SHEET A2.0 FOR FINISH SCHEDULE & SPECIFICATIONS. FINISH TAG: [X-0]

THE CONTENTS OF THIS DRAWING WILL REMAIN THE PROPERTY OF THOMAS F. TEDROW, AIA. ITS CONTENTS, INCLUDING ALL INFORMATION SHALL NOT BE REPRODUCED USING ANY MEANS WITHOUT EXPRESSED WRITTEN CONSENT AND/OR PERMISSION FROM THOMAS F. TEDROW, AIA.



THOMAS F. TEDROW, AIA
 ARCHITECT
 2866 ADAMS BROOK WAY
 SNELLVILLE, GA 30078
 PH. 678.877.9548
 E-MAIL: tom.tedrow@tedrowdesign.com

JERSEY MIKE'S
 THE PALLADIUM SHOPPING CENTER
 4117 BRIAN JORDAN PLACE
 HIGH POINT, NC 27265



ARCHITECT/ENGINEER STAMP

REV. NO.	DATE	DESCRIPTION

PROJECT NO. JMNC-200
 DRAWN BY: KRR
 CHECKED BY: TFT
 ISSUE DATE: 11/06/19

INTERIOR ELEVATIONS

Order Plans @

WWW.LDILine.com