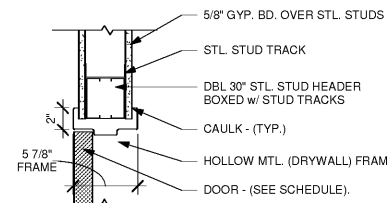


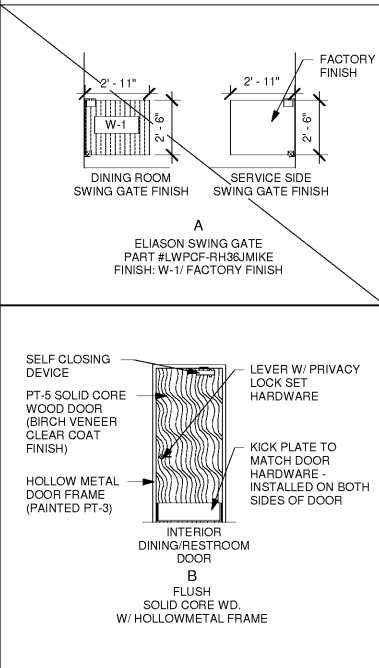
DOOR SCHEDULE

Table with columns: MARK, TYPE, LOCATION, DOOR SIZE, DOOR MATERIAL, DOOR GLASS, FRAME MATERIAL, FRAME TYPE, DETAILS HEAD/JAMB/THRE, FINISHES INSIDE/OUTSIDE, HDWR. SET, REMARKS. Contains entries for Women's RR and Men's RR.



1 DOOR HEAD DETAIL - H.M. 1 1/2" = 1'-0"

DOOR TYPES

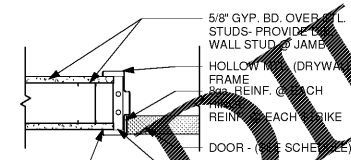


HARDWARE SETS

Table listing hardware sets (A, B, C, D) with quantities and manufacturer details. Includes items like offset pivots, weatherstrips, hinges, and locksets.

GENERAL DOOR NOTES

- 1. ALL HARDWARE SHALL BE FURNISHED AND INSTALLED BY THE GENERAL CONTRACTOR UNLESS NOTED OTHERWISE.
2. SEE HARDWARE SETS FOR REQ'D. FINISHES.
3. ALL DOORS TO BE KEYPED ALIKE.
4. ALL DOORS SHALL HAVE ADA APPROVED TYPE HARDWARE (VERIFY IN FIELD).
5. EXIT HARDWARE SHALL COMPLY WITH ALL APPLICABLE CODES.
6. THE MAXIMUM DIMENSION FROM THE TOP OF THE THRESHOLD TO THE EXTERIOR LANDING @ EXTERIOR DOORS SHALL NOT EXCEED 1/2". (VERIFY IN FIELD)
7. HOLLOW METAL FRAMES SHALL BE 16 GA. STEEL.
8. ALL GLAZING IN DOORS AND WITHIN A 24" ARC OF THE SIDES OF EGRESS DOORS SHALL BE OF AN APPROVED SAFETY TYPE. (VERIFY IN FIELD)
9. PROVIDE SIGNS @ EXIT DOORS TO READ, "THIS EXIT MUST REMAIN UNLOCKED WHEN THIS BUILDING IS OCCUPIED. LETTERS SHALL BE 1" TALL & MOUNTED ON CONTRASTING BACKGROUND.
10. ADJUST CLOSERS SUCH THAT SWEEP PERIOD FROM AN OPEN POSITION OF 70 DEGREES, THE DOORS SHALL TAKE AT LEAST 3 SECONDS TO MOVE TO A POINT 3" FROM THE LATCH, MEASURED TO THE LEADING EDGE OF DOOR. MAXIMUM OPENING FORCE OF DOORS SHALL BE 5 LBF.
11. DOOR DETAILS DO NOT DEPICT ALL INTERIOR FINISHES. REFER TO INTERIOR ELEVATIONS & FINISH MATERIAL SCHEDULE FOR REQUIRED FINISHES.
14. G.C. TO INSTALL PANIC HARDWARE SET D AT EXISTING STOREFRONT.

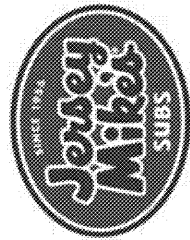


2 DOOR JAMB DETAIL - H.M. 1 1/2" = 1'-0"

Order Plans @ www.IDJLine.com

1/15/2019 10:50:54 AM D:\Drobox (Tedrow Design)\Tedrow Design Team Folder\Jensy Mike\JMNC-02_Highpoint, NC - RodgerPentill\MNC-102_Highpoint,NC 10-12-19.rvt

THE CONTENTS OF THIS DRAWING WILL REMAIN THE PROPERTY OF THOMAS F. TEDROW, AIA. ITS CONTENTS, INCLUDING ALL INFORMATION, SHALL NOT BE REPRODUCED USING ANY MEANS WITHOUT EXPRESS WRITTEN CONSENT AND/OR PERMISSION FROM THOMAS F. TEDROW, AIA.



THOMAS F. TEDROW, AIA ARCHITECT 2866 ADAMS BROOK WAY SNELLVILLE, GA 30078 PH. 678.877.7754 E-MAIL: tom.tedrow@tedrowdesign.com

JERSEY MIKE'S THE PALLADIUM SHOPPING CENTER 4117 BRIAN JORDAN PLACE HIGH POINT, NC 27265



Table with columns: REV. NO., DATE, DESCRIPTION. Includes project information: PROJECT NO. JMNC-200, DRAWN BY: KRR, CHECKED BY: TFT, ISSUE DATE: 11/06/19.

DR/WIN. SCHED & DETAILS A2.1