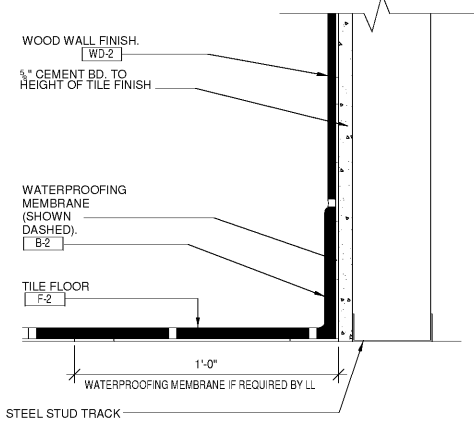


1 FINISH PLAN
 A1.2 1/4" = 1'-0"

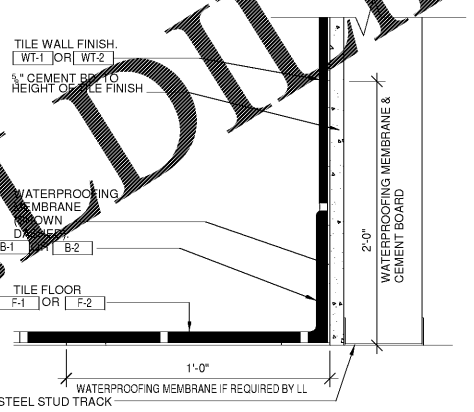
2 WALL FINISH PLAN
 A1.2 1/4" = 1'-0"

NOTE: WATERPROOFING MEMBRANE SHALL BE NOBLE SEAL OR EQUAL.



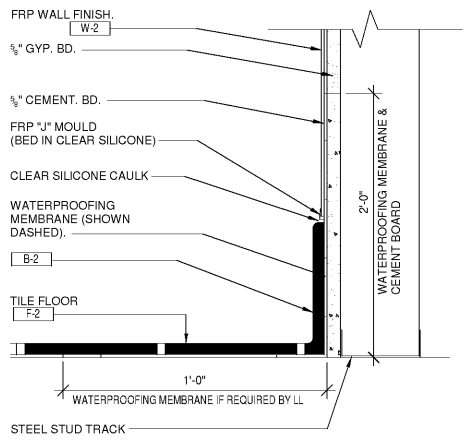
3 TYPICAL BASE DETAIL @ DINING - TILE BASE
 A1.2 3" = 1'-0"

NOTE: WATERPROOFING MEMBRANE SHALL BE NOBLE SEAL OR EQUAL.



4 BASE DETAIL @ FOOD PRODUCTION & RR
 A1.2 3" = 1'-0"

NOTE: WATERPROOFING MEMBRANE SHALL BE NOBLE SEAL OR EQUAL.



5 TYPICAL BASE DETAIL @ BOH
 A1.2 3" = 1'-0"

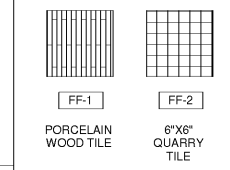
FLOOR FINISH PLAN NOTES

- 1 DOOR THRESHOLD - COORDINATE TILE INSTALLATION w/ EXISTING CONDITIONS. SEE DOOR SCHEDULE.
- 2 MOP SINK.
- 3 CABINET/COUNTER - SEE MILLWORK DETAILS SHEET A4.0 FOR BASE DETAILS. PROVIDE BASE ALL CASEWORK ITEMS AS INDICATED ON SHT. A4.0.
- 4 REFER TO 3/A1.2 FOR DINING BASE [B-1] DETAIL.
- 5 FLOOR FINISH TRANSITION SHALL OCCUR BELOW CASEWORK KNEEWALL. FIELD VERIFY EXACT LOCATION.
- 6 ALIGN FLOOR FINISH TRANSITION WITH WALL.
- 7 REFER TO 4/A1.2 FOR FOOD PRODUCTION & RR BASE DETAIL.
- 8 FLOOR TILE SHALL EXTEND UNDER FREEZER. SEE DET. 7/A1.2 FOR EQUIP. SCHEDULE. G.C. TO VERIFY COORDINATE QUARRY TILE DIMENSIONS WITH EQUIP. SUP.
- 9 SEE DET. 12 FOR DOORLESS MODEL COOLER FLOOR BASE DETAIL. SEE DET. 11.0 FOR EQUIP. SCHEDULE. G.C. TO VERIFY COORDINATE QUARRY TILE DIMENSIONS WITH EQUIP. SUP.
- 10 SEE DET. 12 FOR DOORLESS MODEL COOLER FLOOR BASE DETAIL. SEE DET. 11.0 FOR EQUIP. SCHEDULE. G.C. TO VERIFY COORDINATE QUARRY TILE DIMENSIONS WITH EQUIP. SUP.

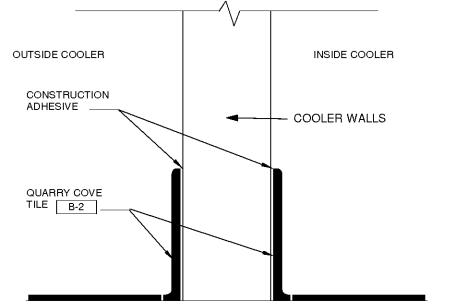
GENERAL FLOOR FINISH NOTES

1. REFER TO PLUMBING PLANS FOR FLOOR DRAIN, FLOOR SINK, HUB DRAIN & CLEAN-OUT LOCATIONS. COORDINATE FLOOR INSTALLATION AROUND THESE ITEMS AND w/PLUMBING CONTRACTOR TO ACHIEVE A CLEAN, FLUSH INSTALLATION.
2. BASE NOT REQUIRED @ CONCEALED AREAS AND @ STOREFRONTS EXTENDING TO FLOOR.
3. REFER ALSO TO INTERIOR ELEVATIONS ON SHEETS A3.0 & A3.1 FOR EXTENT OF BASE & WALL FINISHES.
4. WHEREVER POSSIBLE, ALIGN FLOOR TILE GROUT JOINTS @ DISIMILAR FLOOR TILE TRANSITIONS & w/BASE TILES AS APPLICABLE.
5. PROVIDE POSITIVE SLOPE TO FLOOR DRAINS WHERE POSSIBLE. FIELD COORDINATE w/ EXISTING CONDITIONS. COORDINATE SLOPES w/ TILE CONTRACTOR TO ACHIEVE CLEAN, SMOOTH TRANSITION.

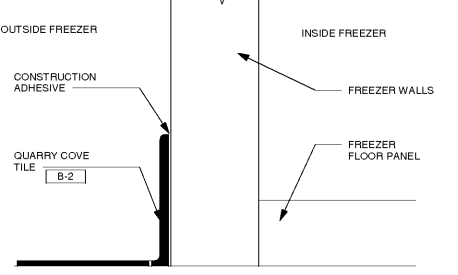
SYMBOLS/GRAPHICS KEY



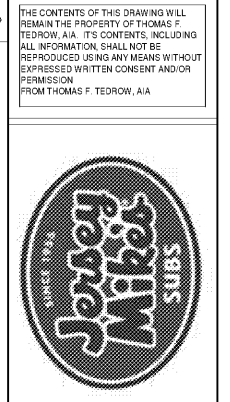
SYMBOLS/GRAPHICS KEY



6 COVE QUARRY TILE @ WALK-IN COOLER
 A1.2 3" = 1'-0"



7 COVE QUARRY TILE @ WALK-IN FREEZER
 A1.2 3" = 1'-0"



THOMAS F. TEDROW, AIA
 ARCHITECT
 2866 ADAMS BROOK WAY
 SNELLVILLE, GA 30078
 PH. 678.777.5548
 E-MAIL: tom.tedrow@tedrowdesign.com

JERSEY MIKE'S
 THE PALLADIUM SHOPPING CENTER
 4117 BRIAN JORDAN PLACE
 HIGH POINT, NC 27265



ARCHITECT/ENGINEER STAMP

REV. NO.	DATE	DESCRIPTION

PROJECT NO. JMNC-200
 DRAWN BY: KRR
 CHECKED BY: TFT
 ISSUE DATE: 11/06/19