

2 DOMESTIC WATER PIPING DIAGRAM
 SCALE: N.T.S.

PLUMBING FIXTURE	QTY	FIXTURE UNITS				REMARKS
		DFU	TOTAL DFU	WSFU EACH	TOTAL WSFU	
WATER CLOSET	2	4	8	5	10	TANK
LAVATORY	2	1	2	2	4	
MOP BASIN	1	2	2	3	3	
SERVICE SINK	1	2	2	3	3	
FLOOR DRAIN	6	2	12	---	---	
HOSE BIBB	2	---	---	5	10	
WATER COOLER	2	1/2	1	0.25	0.5	
TOTALS			27		30.5	

NOTE: CALCULATIONS SHOWN ARE BASED ON INTERNATIONAL PLUMBING CODE
 4"Ø SANITARY = 160 DFU @ 1/8" PER FOOT SLOPE.
 27 DFU = 4"Ø PIPE
 30.5 WSFU = 21 GPM = 1-1/4"Ø WATER SERVICE

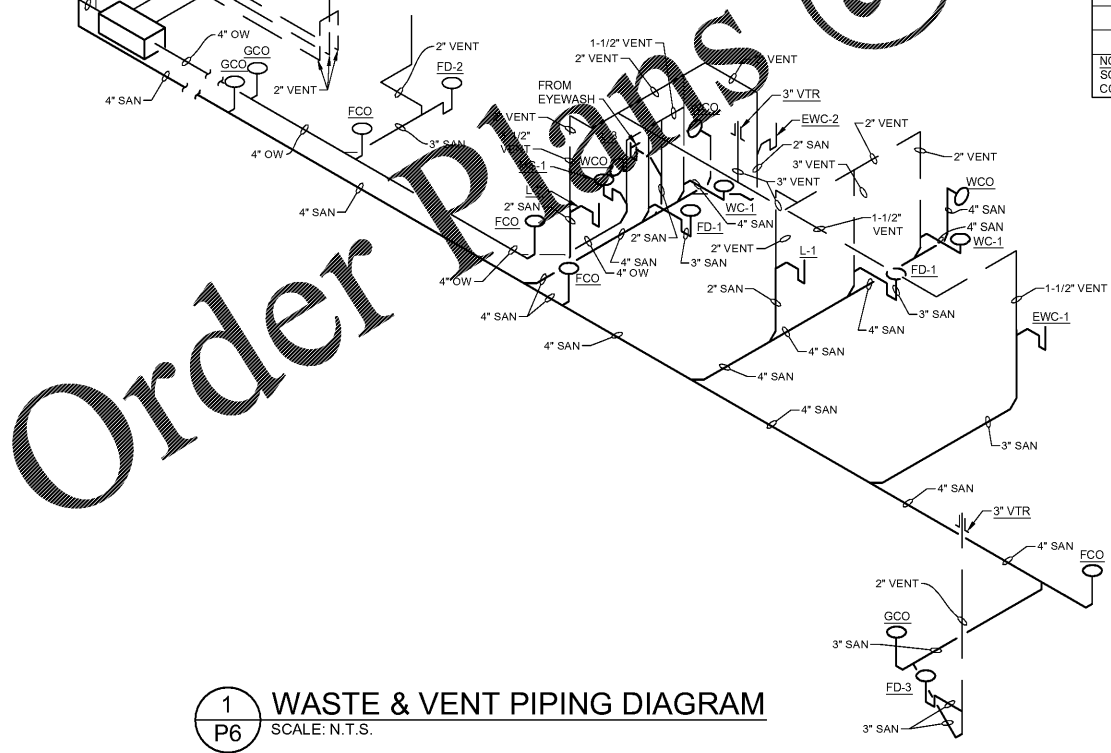
NOTE: ALL DOMESTIC WATER PIPING ROUTED TO PLUMBING FIXTURES LOCATED ON CMU WALLS SHALL BE INSTALLED EXPOSED AND INSULATED. COORDINATE LOCATIONS WITH PLUMBING PLAN.

NOTE: ROUTE ALL PIPING TIGHT TO WALL AND OR AS HIGH AS POSSIBLE.

NOTE: SANITARY AND DOMESTIC WATER PIPING DIAGRAMS ARE DIAGRAMMATIC ONLY. CONTRACTOR SHALL COORDINATE EXACT ROUTING OF PIPING WITH FIELD CONDITIONS.

SLOPE OF HORIZONTAL DRAINAGE PIPE	
SIZE	MINIMUM SLOPE
2-1/2" OR LESS	1/4" / R OR 2%
3" TO 6"	1/8" / R OR 1%

NOTE: SCHEDULE BASED ON INTERNATIONAL PLUMBING CODE, SECTION 704 - TABLE 704.1.



1 WASTE & VENT PIPING DIAGRAM
 SCALE: N.T.S.

PLUMBING FIXTURE AND PIPING CONNECTION SCHEDULE

TAG	DESCRIPTION	MANUFACTURER MODEL	SIZE	VALVE/ FAUCET	CONNECTIONS				REMARKS
					DRAIN	VENT	C.W.	H.W.	
WC-1	WATER CLOSET FLOOR MTD. FLUSH TANK	AMERICAN STANDARD #2467.016	ELONGATED	INTEGRAL WITH TANK	4	2	1/2		MOUNT 18" A.F.F HANDICAP
L-1	LAVATORY HANDICAP-CENTERSET	AMERICAN STANDARD #0124.024	20"x18" VITREOUS CHINA	CHICAGO FAUCET 802-V317CP	1 1/2	1 1/2	1/2	1/2	MOUNT 34" A.F.F HANDICAP 0.5 GPM AERATOR - CHICAGO FAUCET - E2805JKCP
L-2	LAVATORY HANDICAP-CENTERSET	ELKAY ELVW02219CS	22"x19" STAINLESS STEEL	CHICAGO FAUCET 802-V317CP	1 1/2	1 1/2	1/2	1/2	MOUNT 34" A.F.F HANDICAP 0.5 GPM AERATOR - CHICAGO FAUCET - E2805JKCP
L-3	SERVICE AREA FLOOR MOUNTED SINK	FIAT #FL-1	23"x22"x14" PLASTIC	A-1 FAUCET	1 1/2	1 1/2	1/2	1/2	DECK MOUNTED FAUCET PROVIDED WITH SINK
MS-1	FLOOR MOUNTED MOP SINK	FIAT #MSS-2424	24"x24"	MODEL 830-AA FAUCET W/ INTEGRAL VACUUM BREAKER	2	1 1/2	3/4	3/4	889-CC 24" MOP BRACKET, 1453-BB STRAINER
FD-1	FLOOR DRAIN	J.R. SMITH #2010CA-NB	6" ROUND TOP		3	2			CAST IRON BODY
FD-2	FLOOR DRAIN	J.R. SMITH #2350-NB	8 1/2" ROUND WITH SEDIMENT BUCKET		3	2			CAST IRON BODY
FD-3	FLOOR DRAIN	J.R. SMITH #3061	12 1/2"Ø WITH SEDIMENT BUCKET		3	2			CAST IRON BODY
WCO	WALL CLEANOUT	J.R. SMITH #4472T	STAINLESS STEEL COVER PLATE		SEE PLUMBING PLAN				
FCO	FLOOR CLEANOUT	J.R. SMITH #4020	5 3/4"Ø ROUND "TWIST TO FLOOR" ADJUSTABLE TOP		SEE PLUMBING PLAN				NICKEL BRONZE TOP
GCO	GRADE CLEANOUT	J.R. SMITH #4250	8 3/4"Ø ROUND CLEAN OUT FOR UNFINISHED AREA		SEE PLUMBING PLAN				CAST IRON TOP
HB	HOSE BIBB WITH INTEGRAL VACUUM BREAKER SPOUT	ARROWHEAD BRASS HOSE BIBB 36 1" WITH NIBCO 90° ELBOW 707-3-5-LF		MALE HOSE THREAD OUTLET			3/4		90° ELBOW WITH 3/4" SOLDER INLET AND 3/4" THREADED OUTLET, AND INTEGRATED VACUUM BREAKER MOUNT 36" AFF - UNO
EWC-1	BOTTLE FILLING BI-LEVEL WATER COOLER	ELKAY EZSTLWYS			1 1/2	1 1/4	3/8		38 3/8" ORIFICE HEIGHT AFF FOR HIGH FOUNTAIN, PROVIDE W/ APRON MODEL #KAPREZL
EWC-2	WATER COOLER	ELKAY EZSTLWYS			1 1/4	1 1/4	3/8		32 7/8" ORIFICE HEIGHT A.F.F.
TMV-1	THERMOSTATIC MIXING VALVE	POWERS LM492	3/4"				3/4	3/4	SET FOR 110° F HOT WATER ASSE 1070 CERTIFIED
TMV-2	THERMOSTATIC MIXING VALVE	POWERS S-150-J	1/2"				1/2	1/2	SET FOR 85° F HOT WATER ASSE 1071 CERTIFIED
TP-1	TRAP PRIMER	MIFAB MR-500	1/2"				1/2		MI-DU-500 DISTRIBUTION UNIT & MI-600 TRAP FITTING
RP-1	RECIRCULATION PUMP	GRUNDFOS UP10-16 PM A BN5LC	3 FT HEAD AT 1 GPM				1/2		SINGLE PHASE, 115 V 6W WITH TIMER AND AQUASTAT

ACCEPTABLE MANUFACTURERS FOR EQUIVALENT OF SCHEDULE PRODUCT (NO OTHER SUBSTITUTIONS WILL BE ALLOWED):
 * SEE SPECIFICATIONS
 1. COLOR OF FIXTURES SHALL BE WHITE, UNLESS NOTED OTHERWISE.
 2. ALL SINKS AND LAVATORIES SHALL HAVE MINIMUM 17 GAUGE TRAPS, WITH CLEAN OUT PLUGS AND WALL ESCUTCHEONS, CHROME PLATED, OFFSET TRAP ON DRAIN LINE, TAILPIECE WITH STRAINER, HANDI-SHIELD VINYL COVERED PIPE INSULATION WITH HOOD OVER NEW DRAIN LINE AND HOT AND COLD WATER LINES.
 3. ALL FIXTURES SHALL HAVE INDIVIDUAL WALL SUPPLY STOPS, LOOSE KEY OPERATED, WITH WALL ESCUTCHEONS, CHROME PLATED.
 4. TOILET SEATS: ELONGATED WITH OPEN FRONT AND CONTAINING ANTI-MICROBIAL AGENT, BEMIS MODEL #8155CT.
 5. WATER COOLERS FURNISHED WITH INTEGRAL VOLUME REGULATORS, HANGERS, WALL MOUNTING PLATE AND 5 YEAR WARRANTY, PROVIDE BOTTLE FILLER ON LOW WATER COOLER.
 6. LAVATORIES L-1 AND L-2 SHALL BE PROVIDED WITH A VANDAL RESISTANT 0.5 GPM AERATOR - CHICAGO FAUCET MODEL E2805JKCP.
 7. ALL TOILET FLUSH CONTROLS SHALL BE PROVIDED ON THE WIDE SIDE OF THE FIXTURE. (AWAY FROM WALL)
 8. PROVIDE WALL MOUNTED SERVICE FAUCET, MOP HANGER BRACKET AND STAINLESS STEEL STRAINER AT MS-1 LOCATION.
 9. ALL FIXTURES SHALL BE SUBMITTED AND APPROVED BY ENGINEER.
 10. PROVIDE 4" DEEP-SEAL TRAP FOR ALL FLOOR DRAINS.

GAS FIRED WATER HEATER SCHEDULE

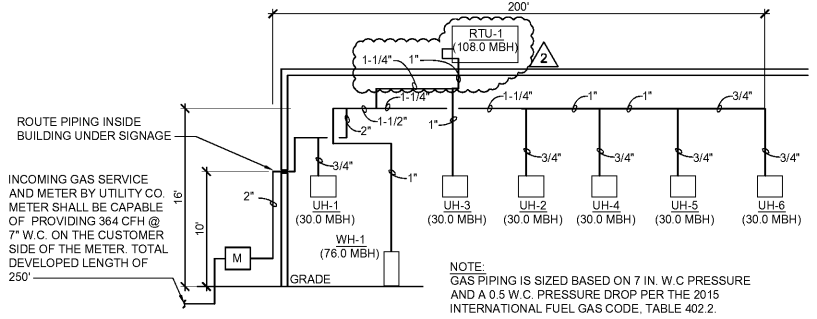
MARK	AREA SERVED	MANUFACTURER	MODEL NUMBER	STORAGE CAPACITY	RECOVERY CAPACITY	MBH INPUT	VOLTS/ PHASE
WH-1	BUILDING	A. O. SMITH	BTX-80	50 GAL	83 GPH @ 100° TEMP RISE	76	120/1

ACCEPTABLE MANUFACTURERS FOR EQUIVALENT OF SCHEDULE PRODUCT (NO OTHER SUBSTITUTIONS WILL BE ALLOWED):
 * SEE SPECIFICATIONS
 NOTES:
 1. WATER HEATER FURNISHED AND INSTALLED BY CONTRACTOR.
 2. PROVIDE MANUFACTURERS CONCENTRIC VENT TERMINATION KIT.
 3. SET DISCHARGE TEMPERATURE OF WATER HEATER TO OPERATE AT 140 DEG F MAX. (FOR MOP SINK USE ONLY, SEE PLUMBING NOTES AND WATER PIPING DIAGRAM).
 4. ROUTE T&P RELIEF DRAIN AND OTHER DRAIN PIPING TO FLOOR DRAIN, TERMINATE 2" ABOVE RIM LEVEL.

GAS PRESSURE REGULATOR SCHEDULE

MANUFACTURER	MODEL NUMBER	CFH CAPACITY	INLET PRESSURE	OUTLET PRESSURE	SPRING COLOR RANGE-ORIFICE
ACTARIS	B-31R 3/4"x3/4"	UP TO 150	2 P.S.I.G.	7 INCHES W.C.	L.T.GREEN 5.5 TO 8.0 INCHES W.C. -1/8"
ACTARIS	B-31R 3/4"x1"	150 TO 400	2 P.S.I.G.	7 INCHES W.C.	L.T.GREEN 5.5 TO 8.0 INCHES W.C. -1/4"
ACTARIS	B-31R 1"x1"	400 TO 800	2 P.S.I.G.	7 INCHES W.C.	L.T.GREEN 5.5 TO 8.0 INCHES W.C. -3/8"

NOTES:
 1. REGULATOR ARE FULL CAPACITY INTERNAL RELIEF TYPE.
 2. REGULATOR TO BE INSTALLED WITH RELIEF VENT IN POSITION TO PREVENT ENTRANCE OF WATER (PROVIDE SCREENED VENT ELBOW AS REQUIRED).
 3. TAG REGULATOR WITH INLET AND OUTLET SETTINGS, AFFIX WARNINGS 'DO NOT REMOVE'.



3 GAS PIPING SCHEMATIC
 SCALE: N.T.S.



REPRODUCTION OF THIS DRAWING IS PROHIBITED WITHOUT THE WRITTEN PERMISSION OF ACERTUS CONSULTING GROUP, LLC. THIS DRAWING IS THE PROPERTY OF BRIDGESTONE RETAIL OPERATIONS, LLC AND IS LOANED TO THE INTERESTS OF BRIDGESTONE RETAIL OPERATIONS, LLC. IT IS NOT TO BE REPRODUCED, COPIED, OR TRANSMITTED IN ANY FORM OR BY ANY MEANS, ELECTRONIC OR MECHANICAL, INCLUDING PHOTOCOPYING, RECORDING, OR BY ANY INFORMATION STORAGE AND RETRIEVAL SYSTEM, WITHOUT THE EXPRESS WRITTEN PERMISSION OF BRIDGESTONE RETAIL OPERATIONS, LLC.

NEW FCAC STORE
 2019 - JANUARY - SMALL I
 233 S AIRLINE HWY
 GONZALES, LA



BID SET
 11.18.19
 TRCI

ISSUE BLOCK
 11/11/19 CB #1

PROPERTY NO.: 160013
 6 DIGIT NO.: 902556
 4 DIGIT NO.: 014W

AOR PROJECT NUMBER: 1955827
 TO PERMIT: DATE: 7-30-2019
 TO BID: DATE: ###-##-##

SHEET TITLE:
PLUMBING SCHEDULES AND RISERS

SHEET NUMBER:
P6