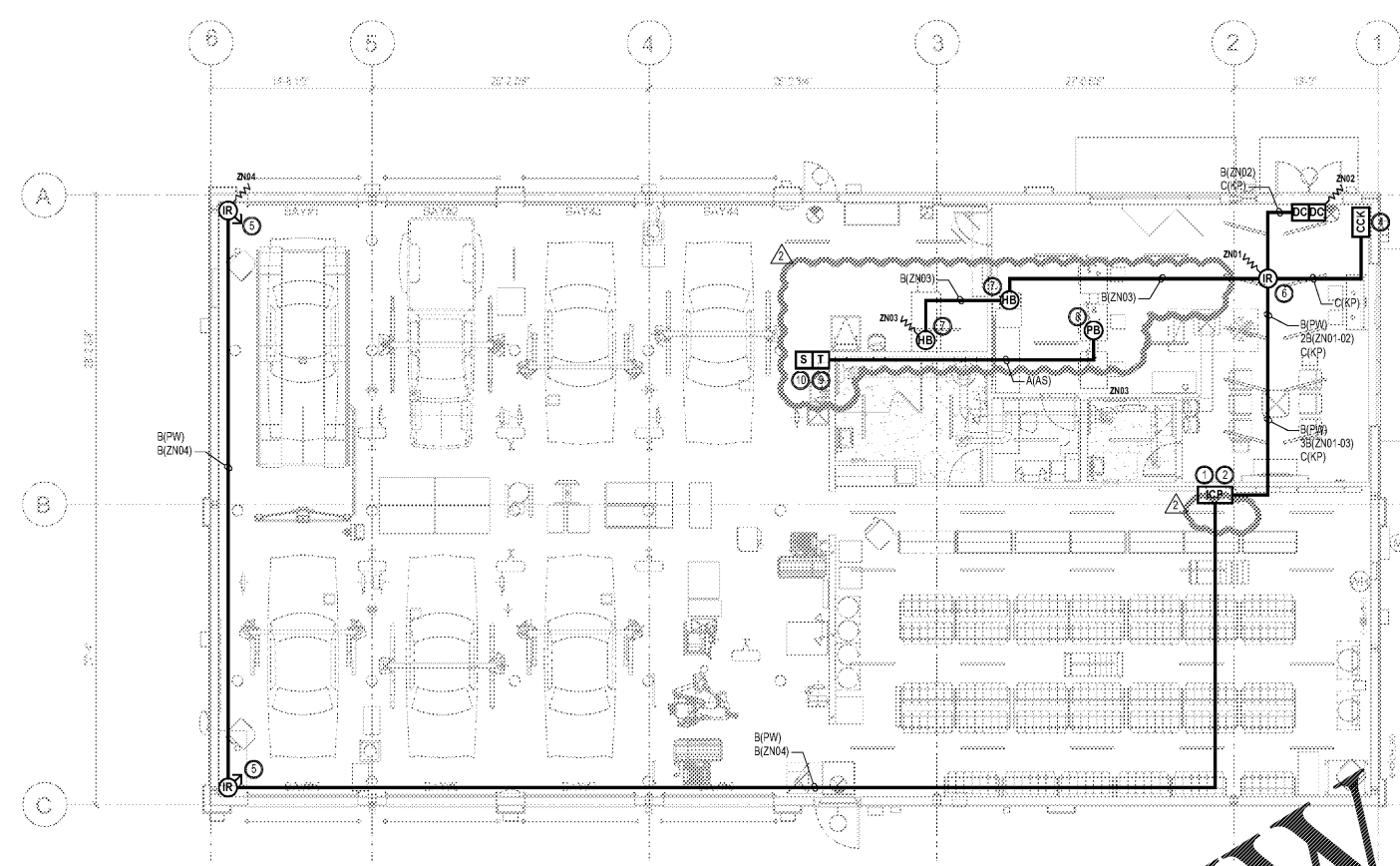


Nov 11, 2019 1:05pm - USER: er/cr
 C:\Users\er/cr\local settings\temp\AcPublish\4222A\18094207_02.dwg



INTRUSION ALARM PLAN
 SCALE: 1/8" = 1'-0"

INTRUSION ALARM SYMBOL KEY		QTY.
ICP	INTRUSION ALARM CONTROL PANEL (HONEYWELL VISTA 20P) (IN GRAY ENCLOSURE)	1
CCK	COMMAND CENTER KEYPAD (HONEYWELL 6150)	1
T	PLUG-IN TRANSFORMER (MB-MGT12AR)	1
R	CEILING MOUNTED MOTION DETECTOR - 360° (HONEYWELL DT7360)	1
RP	PASSIVE INFRARED LONG RANGE MOTION DETECTOR (HONEYWELL IS25100TC)	2
DC	DOOR CONTACT (HONEYWELL MFS80WGK)	1
PB	ASSISTANCE SYSTEM PUSH BUTTON (AC-TS18)	1
HB	HOLD-UP BUTTON SWITCH MOUNTED UNDER DESK (HONEYWELL 6150R) (IN PLASTIC ENCLOSURE)	2
S	INTERIOR SIREN (2 TONES/1R)	1
ICP	INTRUSION ALARM PLENUM RATED CONDUCTORS (GREEN COLOR)	
JB	JUNCTION BOX	
WR	END OF LINE RESISTOR	

INTRUSION ALARM SHEET INDEX	
SHEET #	DESCRIPTION
BA1	INTRUSION ALARM PLAN AND MATRIX
BA2	INTRUSION ALARM NOTES AND CALCULATIONS
BA3	INTRUSION ALARM CONTROL PANEL LAYOUT AND DETAILS

INTRUSION ALARM WIRING LEGEND	
CONDUCTOR TYPE:	CIRCUIT DESIGNATION:
A = 16/2	AS = SOUNDER CIRCUIT
B = 18/2	DL = DATA LOOP CIRCUIT
C = 16/4	KP = KEYPAD / ANNUNCIATOR CIRCUIT
	PW = MOTION DETECTOR POWER
	RC = RELAY CIRCUIT
	ZN = ZONE CIRCUIT

ON-BOARD ZONE LISTING	
PANEL POINTS	ALPHANUMERIC LABEL
ZONE 01	SHOW ROOM MOTION DETECTOR
ZONE 02	SHOW ROOM DOOR CONTACT
ZONE 03	HOLD UP BUTTONS
ZONE 04	SERVICE BAY MOTION DETECTORS
ZONE 05	
ZONE 06	
ZONE 07	
ZONE 08	

INTRUSION ALARM MATRIX										
	ACTUATES ALARM CONDITION AT INTRUSION ALARM CONTROL PANEL	ANNUNCIATES ALARM CONDITION AT COMMAND CENTER KEYPAD	TRANSMITS ALARM SIGNAL TO AN APPROVED REMOTE MONITORING STATION	ACTUATES TROUBLE CONDITION AT INTRUSION ALARM CONTROL PANEL	ANNUNCIATES TROUBLE CONDITION AT COMMAND CENTER KEYPAD	TRANSMITS TROUBLE SIGNAL TO AN APPROVED REMOTE MONITORING STATION	TRANSMITS CLOSING SIGNAL TO APPROVED OFF-SITE SUPERVISING STATION	TRANSMITS OPENING SIGNAL TO APPROVED OFF-SITE SUPERVISING STATION	INITIATES EXIT/ENTRY DELAY TIMER	ACTIVATES ASSISTANCE SYSTEM SIREN
DOOR CONTACTS										
- SHOWROOM DOOR	•	•	•							
- SERVICE BAY DOOR	•	•	•							
MOTION DETECTORS										
- SHOWROOM	•	•	•							
- SERVICE BAY AREA	•	•	•							
HOLD-UP BUTTON	•	•	•							
ARM SYSTEM THROUGH COMMAND CENTER KEYPADS							•	•		
DISARM SYSTEM THROUGH COMMAND CENTER KEYPADS							•	•		
LOSS OF PRIMARY POWER AT THE CONTROL PANEL		•	•	•						
ABNORMAL CIRCUIT OR DEVICE		•	•	•						
ASSISTANCE SYSTEM PUSH BUTTON										•

Order Plans @ www.LDILine.com

CODE CONSULTANTS, INC.
 2043 WOODLAND PKWY, SUITE 300
 ST. LOUIS, MISSOURI 63146-4235
 314-991-2633
 www.codeconsultants.com

Firestone COMPLETE AUTO CARE

THIS DRAWING IS THE PROPERTY OF BRIDGESTONE RETAIL OPERATIONS, LLC AND IS LOANED ON THE EXPRESS CONDITION THAT IT IS NOT TO BE REPRODUCED OR COPIED IN ANY MANNER WITHOUT THE WRITTEN PERMISSION OF BRIDGESTONE RETAIL OPERATIONS, LLC. ADMISSION TO THE EXCLUSIVE OWNERSHIP PLANS TO THE DRAWING BY BRIDGESTONE RETAIL OPERATIONS, LLC.

NEW FCAC STORE
 2019 - JANUARY - SMALL ER
 S. AIRLINE HWY NEAR E. CORVIEW ST
 GONZALES, LA

BID SET
 11/11/19

DAVID J. BURKHART
 License No. 23542
 PROFESSIONAL ENGINEER

FIRE PROTECTION ENGINEER OF RECORD:
 DAVID J. BURKHART, PE
 License No. 23542

CODE CONSULTANTS, INC.
 2043 WOODLAND PKWY, SUITE 300
 ST. LOUIS, MO 63146-4235
 PHONE: 314-991-2633
 CORPORATE CERTIFICATE OF AUTHORITY NO. EP2987

ISSUE BLOCK	
11/11/19	CS# 1

PROPERTY NO.: 160013
 6 DIGIT NO.: 905226
 4 DIGIT NO.: 014W
 AOR PROJECT NUMBER: 1955827
 TO PERMIT: DATE: 7-30-2019
 TO BID: DATE: ##-##-##

SHEET TITLE:
 INTRUSION ALARM PLAN AND MATRIX

SHEET NUMBER:
BA1