

**FIRE PROTECTION GENERAL NOTES**

- 101.7.2.1.3 AND IBC 1010.1.5 THROUGH 1010.1.7 PROVIDE LEVEL LANDINGS OUTSIDE EXTERIOR DOORS THAT ARE WITHIN 1/2" OF THE INTERIOR FINISH FLOOR ELEVATION.
- 101.7.2.1.5 AND IBC 1010.1.9 LOCKS ON DOORS IN MEANS OF EGRESS SHALL NOT REQUIRE THE USE OF A KEY. SPECIAL DEVICE OR SPECIAL KNOWLEDGE TO OPEN IN THE DIRECTION OF EGRESS.
- 101.7.2.1.5.10.2 AND IBC 1010.1.9.5 DOORS SHALL BE OPENABLE WITH ONLY ONE RELEASING OPERATION. A TWO-STEP RELEASE, SUCH AS A KNOB AND AN INDEPENDENT SLIDE BOLT, IS NOT ACCEPTABLE, EXCEPT UNDER SPECIAL CONDITIONS.
- LAC 58 V.303 E PROVIDE LISTED PORTABLE FIRE EXTINGUISHERS IN ACCORDANCE WITH NFPA 10. (REFER TO APPENDIX E FOR DISTRIBUTION INFORMATION.)
- 101.38.3.3 INTERIOR WALLS AND CEILINGS SHALL HAVE A FLAME SPREAD OF 0-200 AND A SMOKE DEVELOPMENT RATING OF 0-450.

**GENERAL NOTES**

- WALL DIMENSIONS ARE TO FINISH CLEAR DIMENSION. ALL MATERIALS MUST BE FIGURED INTO THE LAYOUT OF THE FRAMING.
- MASONRY OPENING SHALL BE COORDINATED WITH WINDOW OR DOOR MANUFACTURER'S REQUIREMENTS.
- PLUMBING ROUGH INS ARE CRITICAL FOR ADA CLEARANCES. VERIFY ALL PLUMBING ROUGH INS PRIOR TO INSTALLING ROOM FINISHES.
- ALL MASONRY DIMENSIONS ARE NOMINAL DIMENSIONS. MASONRY CONTRACTOR TO ADJUST COURSING AS NEEDED.
- PROPOSED FIRE EXTINGUISHERS ARE LOCATED BY THE SYMBOL ● F.E. COORDINATE TYPE, SIZE AND FINAL LOCATIONS WITH LOCAL FIRE OFFICIALS.
- ALL GYP. BRD. WALLS SHALL HAVE LATERAL BRACING AND CONTROL JOINTS AS REQUIRED IN SPECIFICATION SECTION 092900.

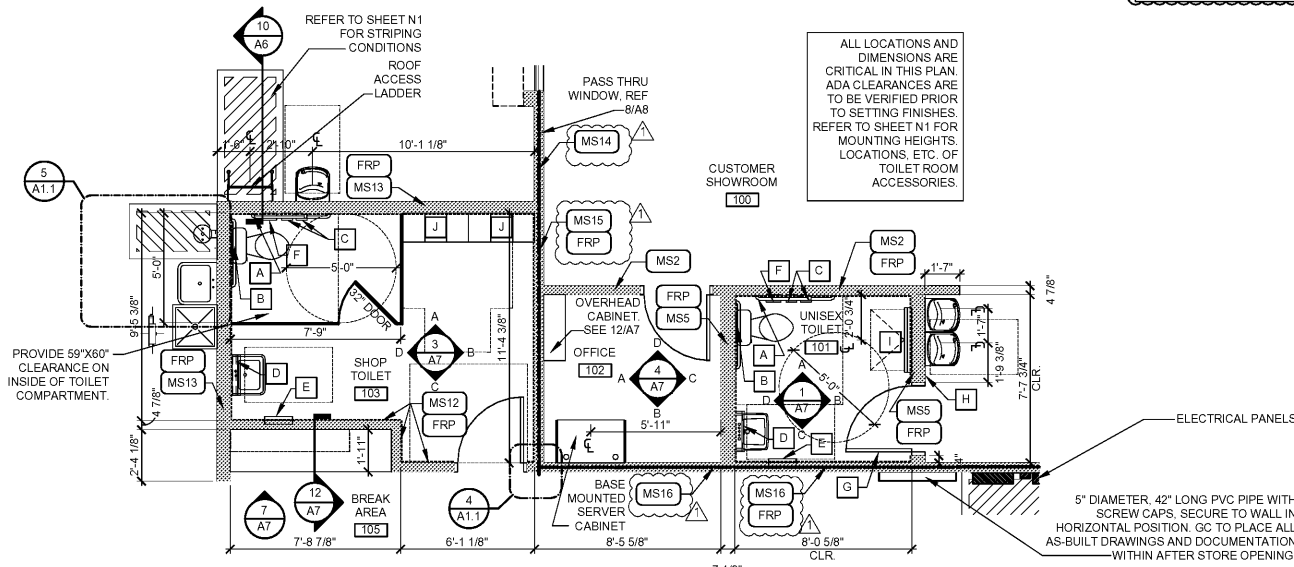
**STANDARD WALL TYPES**

NOTES:

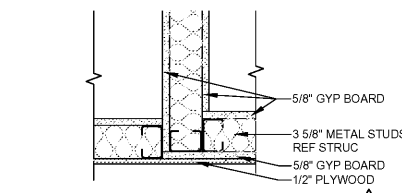
- SOME WALL TYPES MAY NOT BE USED. REFER TO PLANS
- REFER TO STRUCTURAL DRAWINGS FOR STUD GAUGES AND ADDITIONAL FRAMING INFORMATION.



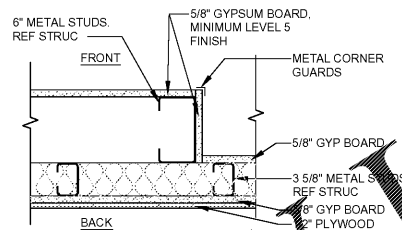
- MS1: 3 5/8" METAL STUDS AT 16" O.C. WITH 5/8" GYPSUM BOARD BOTH SIDES. EXTEND PARTITION TO DECK (TYPICAL U.N.O.). USE MOISTURE RESISTANT GYPSUM BOARD ON INTERIOR SIDE OF TOILET AND MOP BASIN AREAS.
- MS2: 3 5/8" METAL STUDS AT 16" O.C. WITH 5/8" GYPSUM BOARD BOTH SIDES WITH SOUND ATTENUATION BLANKETS BETWEEN. EXTEND PARTITION TO DECK (TYPICAL U.N.O.) USE MOISTURE RESISTANT GYPSUM BOARD ON INTERIOR SIDE OF TOILET AND MOP BASIN AREAS AND BEHIND DRINKING FOUNTAINS.
- MS3: (METAL BUILDING FRAME WALL SYSTEM) WITH 2" FURRING WITH 5/8" GYPSUM BOARD TO METAL DECK.
- MS4: 3 5/8" METAL STUDS AT 16" O.C. WITH 1/2" PLYWOOD BOTH SIDES, PAINTED (TYPICAL UNLESS NOTED OTHERWISE).
- MS5: 6" METAL STUDS AT 16" O.C. WITH 5/8" GYPSUM BOARD BOTH SIDES WITH SOUND ATTENUATION BLANKETS BETWEEN. EXTEND PARTITION TO DECK (TYPICAL U.N.O.) AT SIM. CONDITION, EXTEND PARTITION 4" MIN. ABOVE CEILING. USE MOISTURE RESISTANT GYPSUM BOARD ON INTERIOR SIDE OF TOILET AND MOP BASIN AREAS.
- MS6: 6" METAL STUDS TO 8" A.F.F. AT 16" O.C., STEEL COLUMNS WITHIN WALL FOR SUPPORT WITH 1/2" PLYWOOD BOTH SIDES, PAINTED. REFER STRUCTURAL DRAWINGS FOR STEEL COLUMNS.
- MS7: 6" METAL STUDS TO 4" A.F.F. AT 16" O.C., STEEL COLUMNS WITHIN WALL FOR SUPPORT WITH 1/2" PLYWOOD BOTH SIDES, PAINTED. REFER STRUCTURAL DRAWINGS FOR STEEL COLUMNS.
- MS8: 6" METAL STUDS AT 16" O.C. WITH 1/2" PLYWOOD BOTH SIDES, PAINTED.
- MS9: METAL BUILDING FRAME WALL SYSTEM WITH 1/2" PLYWOOD TO 8'-0" A.F.F. ON INTERIOR SIDE. OPEN TO WALL STRUCTURE ABOVE.
- MS10: 2 1/2" METAL STUDS FURRING WITH 5/8" GYPSUM BOARD. EXTEND PARTITION 4" MIN. ABOVE CEILING (12'-0" A.F.F. IN CUSTOMER SHOWROOM). USE MOISTURE RESISTANT GYPSUM BOARD ON INTERIOR SIDE OF TOILET AREA. FIELD VERIFY EXACT EXTENTS AFTER TAPERED COLUMNS ARE PLACED IN ORDER TO COMPLETELY CONCEAL COLUMNS.
- MS11: METAL BUILDING FRAME WALL SYSTEM WITH 1/2" PLYWOOD TO 12'-0" A.F.F. ON INTERIOR SIDE. OPEN TO WALL STRUCTURE ABOVE.
- MS12: 3 5/8" METAL STUDS AT 16" O.C. WITH 5/8" GYPSUM BOARD ON RESTROOM AND OFFICE SIDES. 1/2" PLYWOOD ON UTILITY AND INVENTORY SIDES. ADD SOUND ATTENUATION BLANKETS BETWEEN. EXTEND PARTITION TO DECK (TYPICAL U.N.O.) USE MOISTURE RESISTANT GYPSUM BOARD ON INTERIOR SIDE OF TOILET AND MOP BASIN AREAS AND BEHIND DRINKING FOUNTAINS.
- MS13: 6" METAL STUDS AT 16" O.C. WITH 5/8" GYPSUM BOARD ON SHOWROOM AND BREAK AREA SIDE AND 1/2" PLYWOOD ON UTILITY AREA OR SERVICE SIDE WITH SOUND ATTENUATION BLANKETS BETWEEN. EXTEND PARTITION TO DECK (TYPICAL U.N.O.) USE MOISTURE RESISTANT GYPSUM BOARD ON INTERIOR SIDE OF TOILET AND MOP BASIN AREAS AND BEHIND DRINKING FOUNTAINS.
- MS14: UL 419: 3 5/8" METAL STUDS AT 16" O.C. WITH TYPE "X" 5/8" GYPSUM BOARD ON EACH SIDE. ON INTERIOR SIDE ADD 1/2" PLYWOOD ON TOP OF GYPSUM BOARD. EXTEND PARTITION TO DECK (TYPICAL U.N.O.)
- MS15: UL 419: 3 5/8" METAL STUDS AT 16" O.C. WITH TYPE "X" 5/8" GYPSUM BOARD ON EACH SIDE. ADD SOUND ATTENUATION BLANKETS BETWEEN. EXTEND PARTITION TO DECK (TYPICAL U.N.O.)
- MS16: UL 419: 3 5/8" METAL STUDS AT 16" O.C. WITH TYPE "X" 5/8" GYPSUM BOARD ON EACH SIDE WITH SOUND ATTENUATION BLANKETS BETWEEN. 1/2" PLYWOOD ON UTILITY AND INVENTORY SIDES. EXTEND PARTITION TO DECK (TYPICAL U.N.O.) USE MOISTURE RESISTANT TYPE "X" ON RISER SIDE OF WALL.
- FRP: FRP RESISTANT GLUE EDGE TO EDGE OF SUBSTRATE. REFER TO INTERIOR ELEVATIONS ON SHEET AT FOR HEIGHTS. A.F.F.



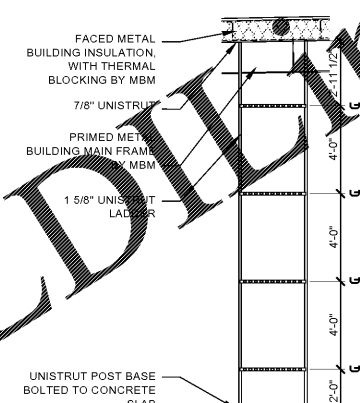
**2 ENLARGED PLAN**  
A1.1 SCALE: 1/4"=1'-0"



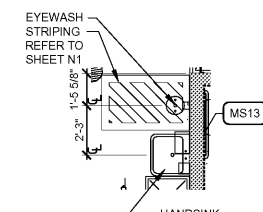
**4 ENLARGED PLAN**  
A1.1 SCALE: 1 1/2"=1'-0"



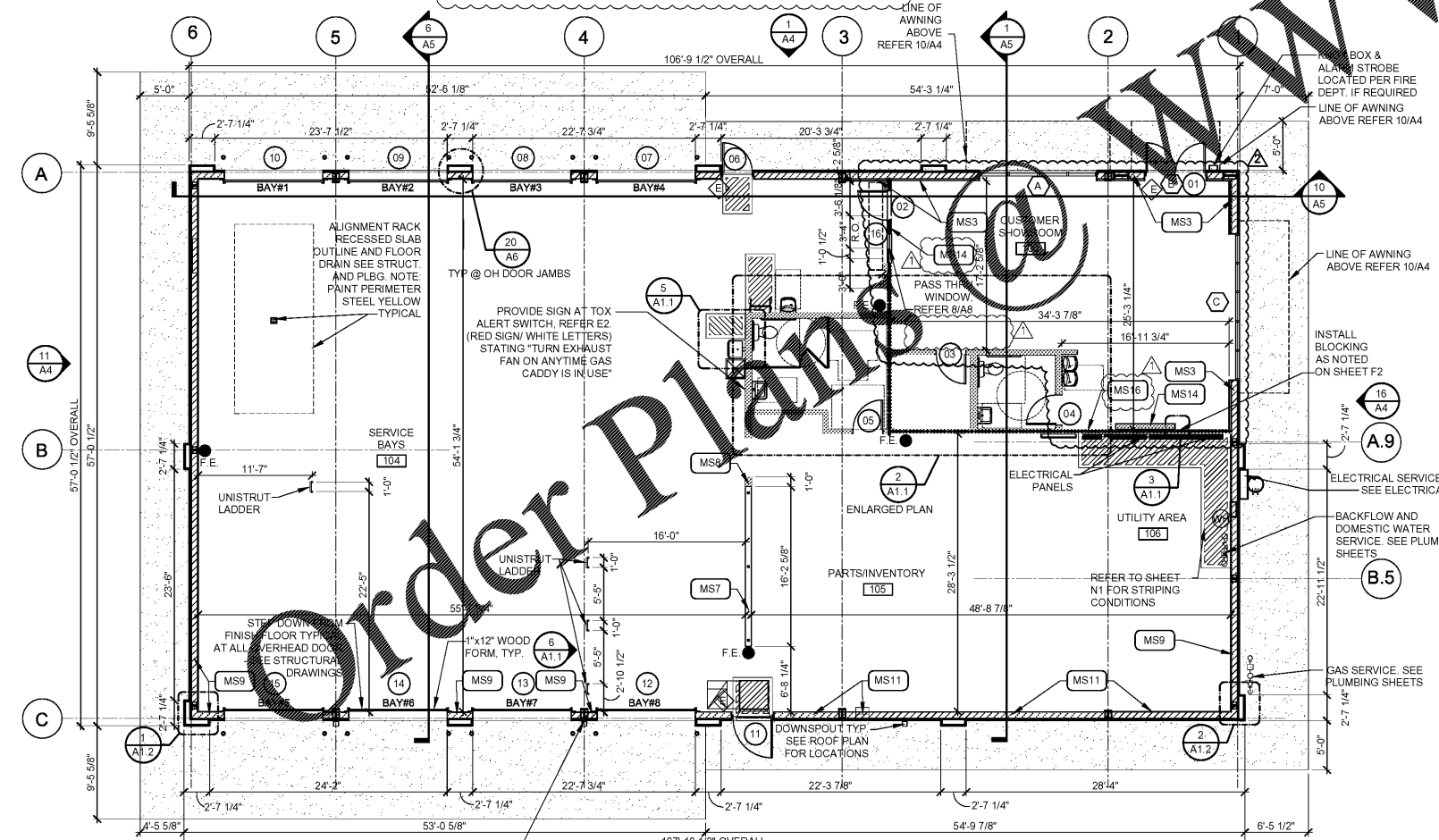
**3 ENLARGED PLAN**  
A1.1 SCALE: 1 1/2"=1'-0"



**6 ENLARGED ELEVATION**  
A1.1 SCALE: 1/4"=1'-0"



**5 ENLARGED PLAN**  
A1.1 SCALE: 1/4"=1'-0"



**16 FLOOR PLAN**  
A1.1 SCALE: 1/8"=1'-0"

Rating, Hr	Min Stud Depth, In.	No. of Layers & Thkns of Panel	Min Thkns of Insulation (item 4)	
1	Items 2, 2C, 2D, 2F, 2G, 2O	3-1/2	1 layer, 5/8 in. thick	Optional

- MATERIALS USED:
2. STEEL STUDS
  4. NOT REQUIRED
  - 4A. NOT REQUIRED
  5. GYPSUM BOARD
  8. JOINT TAPE AND COMPOUND

**7 UL DETAIL 419**  
A1.1 SCALE: 1 1/2"=1'-0"

**ACCESSORIES**

MARK	DESCRIPTION
A	42" GRAB BAR WITH WOOD BACKER, WITH 18" VERTICAL BAR AS REQUIRED.
B	36" GRAB BAR WITH WOOD BACKER
C	TOILET TISSUE DISPENSER
D	MIRROR - SEE ELEVATIONS FOR SIZE
E	PAPER TOWEL DISPENSER & DISPOSAL
F	SANITARY NAPKIN DISPOSAL UNIT
G	COAT HOOK
H	HANDICAP SIGN-MOUNT 5'-0" AFF TO CENTER; 8" EDGE TO JAMB EDGE.
I	BABY CHANGING STATION. SEE DETAIL 1/N1
J	6 HALF LOCKER UNIT QTY(2)(SECURE TO WALL)

NOTES:

- PROVIDE WOOD BLOCKING AS REQUIRED FOR MOUNTING ACCESSORIES
- ACCESSORY PACKAGE AVAILABLE FROM NATIONAL VENDOR.
- REFER TO SHEET N1 FOR MOUNTING HEIGHTS, LOCATIONS, ETC OR TOILET ROOM ACCESSORIES.

**SGA Design Group, P.C.**  
1437 South Boulder, Suite 550  
Tulsa, Oklahoma 74116 3809  
p. 918.597.8900  
f. 918.597.8901  
www.sgadesigngroup.com

**Firestone COMPLETE AUTO CARE**

THIS DRAWING IS THE PROPERTY OF BRIDGESTONE RETAIL OPERATIONS, LLC AND IS LOANED TO THE EXPRESS CONDITION THAT IT IS NOT TO BE REPRODUCED OR TRANSMITTED IN ANY FORM OR BY ANY MEANS, ELECTRONIC OR MECHANICAL, INCLUDING PHOTOCOPYING, RECORDING, OR BY ANY INFORMATION STORAGE AND RETRIEVAL SYSTEM, WITHOUT THE WRITTEN PERMISSION OF BRIDGESTONE RETAIL OPERATIONS, LLC. ADMISSION TO THE EXCLUSIVE OWNERSHIP PLANS TO THE DRAWING BY BRIDGESTONE RETAIL OPERATIONS, LLC.

REPRODUCTION OF THIS DRAWING FOR ANY OTHER PROJECT WITHOUT THE WRITTEN PERMISSION OF BRIDGESTONE RETAIL OPERATIONS, LLC IS STRICTLY PROHIBITED. ANY VIOLATION OF THIS PROHIBITION WILL BE CONSIDERED A BREACH OF CONTRACT AND SUBJECT TO LEGAL ACTION.

**NEW FCAC STORE**  
2019 - JANUARY - SMALL I  
233 S AIRLINE HWY  
GONZALES, LA

**BID SET**  
11.18.19  
TRCI

11/12/2019

ISSUE BLOCK	DATE	REV #1
10/07/19		
11/11/19		CB #1

PROPERTY NO.:	160013
6 DIGIT NO.:	902556
4 DIGIT NO.:	014W
AOR PROJECT NUMBER:	1955827
TO PERMIT DATE:	7-30-2019
TO BID DATE:	##-##-##

SHEET TITLE:  
**FLOOR PLAN AND NOTES**

SHEET NUMBER:  
**A1.1**