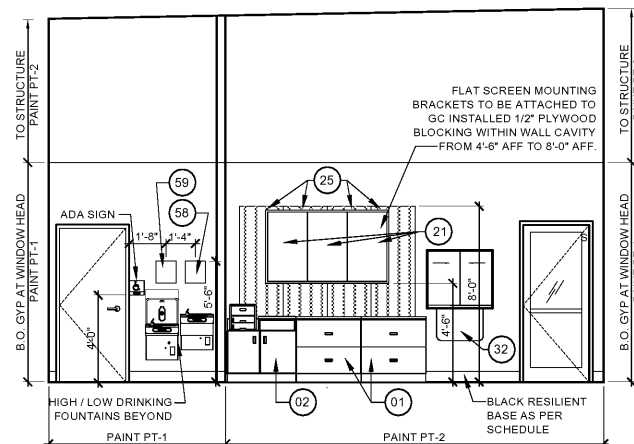
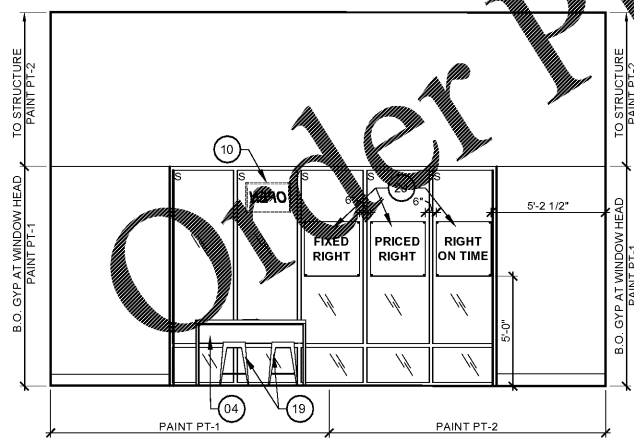


11 ENLARGED SHOWROOM FIXTURE PLAN
 F2 SCALE: 1/4"=1'-0"



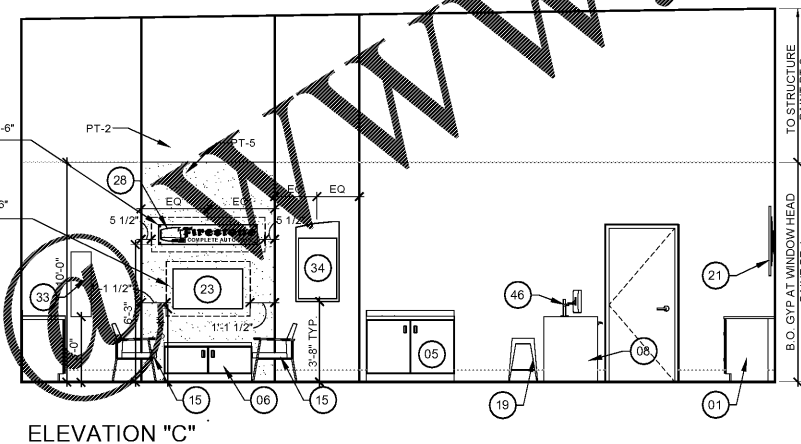
ELEVATION "B"



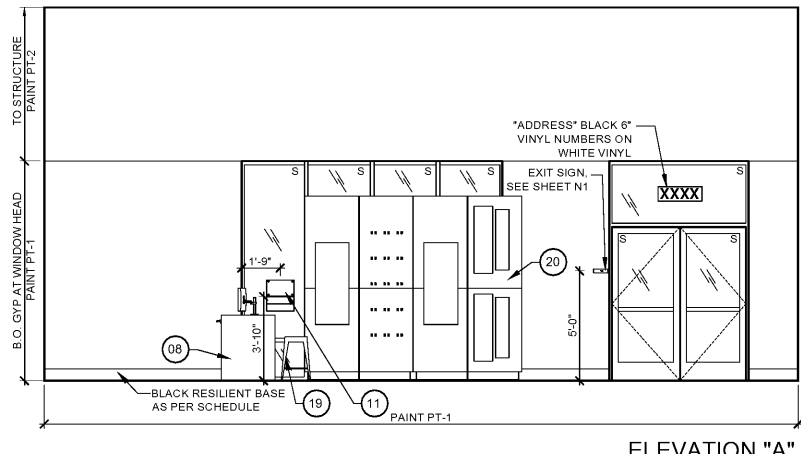
ELEVATION "D"

13 INTERIOR ELEVATIONS
 F2 SCALE: 1/4"=1'-0"

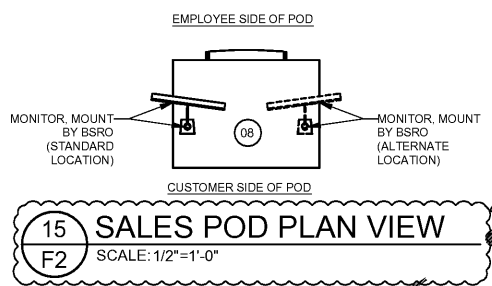
ITEM 28 PROVIDE 1/2" PLYWOOD BLOCKING WITHIN STUD CAVITY FROM 5'-11" A.F.F. TO 7'-6" A.F.F.
 ITEM 23 PROVIDE 1/2" PLYWOOD BLOCKING WITHIN STUD CAVITY FROM 3'-0" A.F.F. TO 5'-6" A.F.F.



ELEVATION "C"



ELEVATION "A"



15 SALES POD PLAN VIEW
 F2 SCALE: 1/2"=1'-0"

DISPLAY FIXTURES & ACCESSORY KEY: FURNISHED BY BSRO U.N.O. ALL ITEMS INSTALLED BY G.C. REFER TO E2/E3/E4/E5 SHEETS FOR FURTHER REQUIREMENTS.		
#	QTY	DESCRIPTION
01	2	2020 LATERAL FILE CREENZA
02	1	2020 PRINTER CABINET CREENZA
04	1	2020 PRODUCTIVITY COUNTER
05	1	2020 COFFEE BAR
06	1	2020 TV STAND
07	2	2020 POD CONDUIT RACEWAY
08	3	2020 CONSULT POD
09	1	2020 CONSULT POD RACEWAY
10	1	2020 OPEN SIGN
11	1	2020 STORE HOURS SIGN KIT
15	6	2020 STD LOUNGE CHAIR
17	2	2020 SIDE TABLE
18	1	2020 COFFEE TABLE
19	5	2020 INDUSTRIAL STOOL
20	1	2020 MRT UNIT
21	1	2020 MENU BOARD 43" TV WITH SCREEN TV BRACKETS
23	1	2020 TIRE TREAD SIGN WITH ARTICULATING TV BRACKET
24	1	MANAGER'S CHAIR
25	1	2020 TIRE TREAD WALL PANEL
26	1	2020 TIRE TREAD WALL SIGN
29	1	2020 TRIPLE PROMISE WINDOW DECAL
31	1	2020 MAGAZINE RACK
32	1	2020 ASE WALL PLAQUE
35	1	2020 RESTROOM GRAPHICS
35A	3	2020 3 X 4 FATIGUE MAT
35B	4	2020 3 X 5 PERFORMANCE MAT
36	1	MANAGER'S DESK 5'-0"
37	2	COAT RACK
38	1	2020 JOB ENVELOPE WALL BOX
39	1	OVERFLOW BAR
40	2	CLEANING SUPPLY RACK (3'-0" EACH)
41	1	ABOVE GROUND SAFE
42	1	2020 18 GALLON INSIDE TRASH CAN
43	1	2020 10 GALLON INSIDE TRASH CAN
44	2	EXTERIOR WALL MOUNTED SMOKER STATION, MOUNT 48" TO TOP
45	1	2020 34 GALLON OUTDOOR TRASH CAN
46	3	2020 CONSULT POD MONITOR ARM & SCREEN
47	6	2020 TIRE TREAD TRIM CAP
50	1	SPECIAL ORDER & PENDING BIN
52	1	SAFETY GRAPHIC 24" X 36" MOUNTED 4'-7" A.F.F. ON DOOR
54	1	PAPER TOWEL DISPENSER (ROLL)
55	1	GOVERNMENT POSTER
56	1	OSHA POSTER
57	1	FOUR DRAWER VERTICAL FILING CABINETS
58	2	WALL MOUNTED FRAME (CERTIFICATE OF OCCUPANCY)
59	2	WALL MOUNTED FRAME (BUSINESS LICENSE)
60	1	SOILED GARMENT CABINET
62	2	HAND SOAP DISPENSER
63	1	HAND GREASE CLEANER DISPENSER
64	1	COMPACT REFRIGERATOR
65	1	MICROWAVE
72	1	BASE MOUNTED IT SERVER CABINET
84	1	MOBILE COAT RACK

FIRE PROTECTION GENERAL NOTES

- AFTER CONSULTATION WITH THE LOUISIANA REHABILITATION SERVICES, IT HAS BEEN DETERMINED THAT THIS OFFICE WILL NOT REQUIRE THE STORAGE/INDUSTRIAL AREA(S) AND AN ASSOCIATED TOILET/BATH PORTIONS OF THIS FACILITY TO COMPLY WITH ANY OF THE ADA-ABA ACCESSIBILITY GUIDELINES OR LSC REQUIREMENTS FOR INDIVIDUALS WITH DISABILITIES, WITH THE FOLLOWING STIPULATIONS:
 - NO FLOOR PLAN MODIFICATIONS ARE PERMITTED. OFFICE ADDITIONS, AND SPACES CREATED WHICH CONSTITUTE A CHANGE IN USE, SHALL PROVIDE ACCESS TO PERSONS WITH DISABILITIES AND SHALL CONFORM TO THE PROVISIONS FOR NEW CONSTRUCTION.
 - PROVIDE FEATURES OF ACCESSIBILITY FOR THE PUBLIC AND ADMINISTRATIVE AREAS.
 - VISUAL ALARM NOTIFICATION SHALL BE PROVIDED IF A FIRE ALARM SYSTEM IS REQUIRED BY CODE.
 - IF A COMPLAINT IS RECEIVED ABOUT DISCRIMINATION IN HIRING OF INDIVIDUALS WITH DISABILITIES OR CONCERNING ACCESS TO ANY PART OF THE FACILITY, THIS OFFICE RESERVES THE RIGHT TO REQUIRE THE FACILITY OR A PORTION THEREOF TO BE UPGRADED TO COMPLY WITH THE ACCESSIBILITY REQUIREMENTS ENFORCED BY THIS OFFICE.
- PLEASE NOTE THAT THIS DOCUMENT REFERENCES SPECIFIC COMPLIANCE WITH STATE REGULATIONS AND DOES NOT GUARANTEE, OR ATTEMPT TO CIRCUMVENT, COMPLIANCE WITH FEDERAL LAW.
- LRS 40:1731 (EFFECTIVE 10/01/11) PROVIDE ACCESS FOR PERSONS WITH DISABILITIES IN ACCORDANCE WITH THE ADA-ABA ACCESSIBILITY GUIDELINES, JULY 23, 2004 (ALSO KNOWN AS THE 2010 STANDARDS). THIS DOES NOT INCLUDE A REVIEW FOR COMPLIANCE WITH THE FEDERAL AMERICANS WITH DISABILITIES (CIVIL RIGHTS) ACT OF 1990. COMPLIANCE WITH STATE REGULATIONS AND REQUIREMENTS DOES NOT GUARANTEE COMPLIANCE WITH FEDERAL LAW. NOTE: AS PER ADA-ABA 2004, SECTION F103, OFFICE OF STATE FIRE MARSHAL APPEAL DETERMINATIONS ARE NOT VALID FOR FACILITIES THAT ARE DESIGNED, CONSTRUCTED, ALTERED, OR OPERATED WITH FEDERAL FUNDS, OR LEASED BY A FEDERAL AGENCY. THE AUTHORITY HAVING JURISDICTION OVER SUCH APPEALS IS THE ADMINISTRATOR OF THE GENERAL SERVICES ADMINISTRATION (GSA).
- ADA-ABA 216.2 WHERE SIGNAGE IDENTIFIES PERMANENT ROOMS OR SPACES OR EXITS, THE SIGNAGE SHALL COMPLY WITH SECTIONS 703.1-703.5 (RAISED CHARACTERS, BRAILLE, VISUAL CHARACTERISTICS, HEIGHT).
- ADA-ABA 303 THRESHOLDS SHALL COMPLY WITH REQUIREMENTS OF THIS SECTION REGARDING CHANGES IN LEVEL. (NOT MORE THAN 1/2" HEIGHT AND BEVELLED IF OVER 1/4")
- ADA-ABA 404.2.7 HANDLES, PULLS, LATCHES, LOCKS, AND OTHER OPERABLE PARTS ON DOORS AND GATES SHALL COMPLY WITH 309.4. HARDWARE SHALL NOT REQUIRE TIGHT GRASPING, TIGHT PINCHING, OR TWISTING OF THE WRIST TO OPERATE.

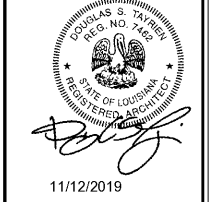
SGA Design Group, P.C.
 1437 South Boulder, Suite 550
 Tulsa, Oklahoma 74116 3609
 p. 918.597.8800
 f. 918.597.8801
 www.sgadesigngroup.com



REPRODUCTION OF THIS DRAWING IS THE PROPERTY OF BRIDGESTONE RETAIL OPERATIONS, LLC AND IS LOANED ON THE EXPRESS CONDITION THAT IT IS NOT TO BE USED IN ANY WAY OR REPRODUCED IN ANY MANNER WITHOUT THE WRITTEN PERMISSION OF BRIDGESTONE RETAIL OPERATIONS, LLC. THIS DRAWING IS THE PROPERTY OF BRIDGESTONE RETAIL OPERATIONS, LLC. NO PART OF THIS DRAWING IS TO BE REPRODUCED OR TRANSMITTED IN ANY FORM OR BY ANY MEANS, ELECTRONIC OR MECHANICAL, INCLUDING PHOTOCOPYING, RECORDING, OR BY ANY INFORMATION STORAGE AND RETRIEVAL SYSTEM. WITHOUT THE WRITTEN PERMISSION OF BRIDGESTONE RETAIL OPERATIONS, LLC.

NEW FCAC STORE
 2019 - JANUARY - SMALL I
 233 S AIRLINE HWY
 GONZALES, LA

BID SET
 11.18.19
 TRCI



ISSUE BLOCK	
11/11/19	CB #1
PROPERTY NO.:	160013
6 DIGIT NO.:	902556
4 DIGIT NO.:	014W
AOR PROJECT NUMBER:	1955827
TO PERMIT DATE:	7-30-2019
TO BID DATE:	##-##-##
SHEET TITLE:	SHOWROOM FIXTURE PLAN & ELEVATIONS
SHEET NUMBER:	F2