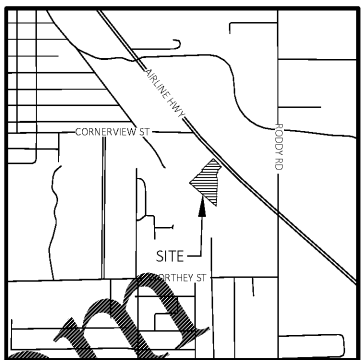
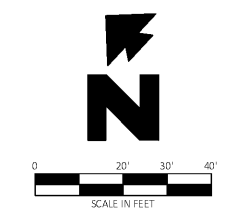


**SITE BENCHMARK**  
 TEMPORARY BENCHMARK "A" FULL ROAD SPIRE IN POWER  
 POLE ON NORTH SIDE OF PROPERTY  
 ELEVATION 3.68'

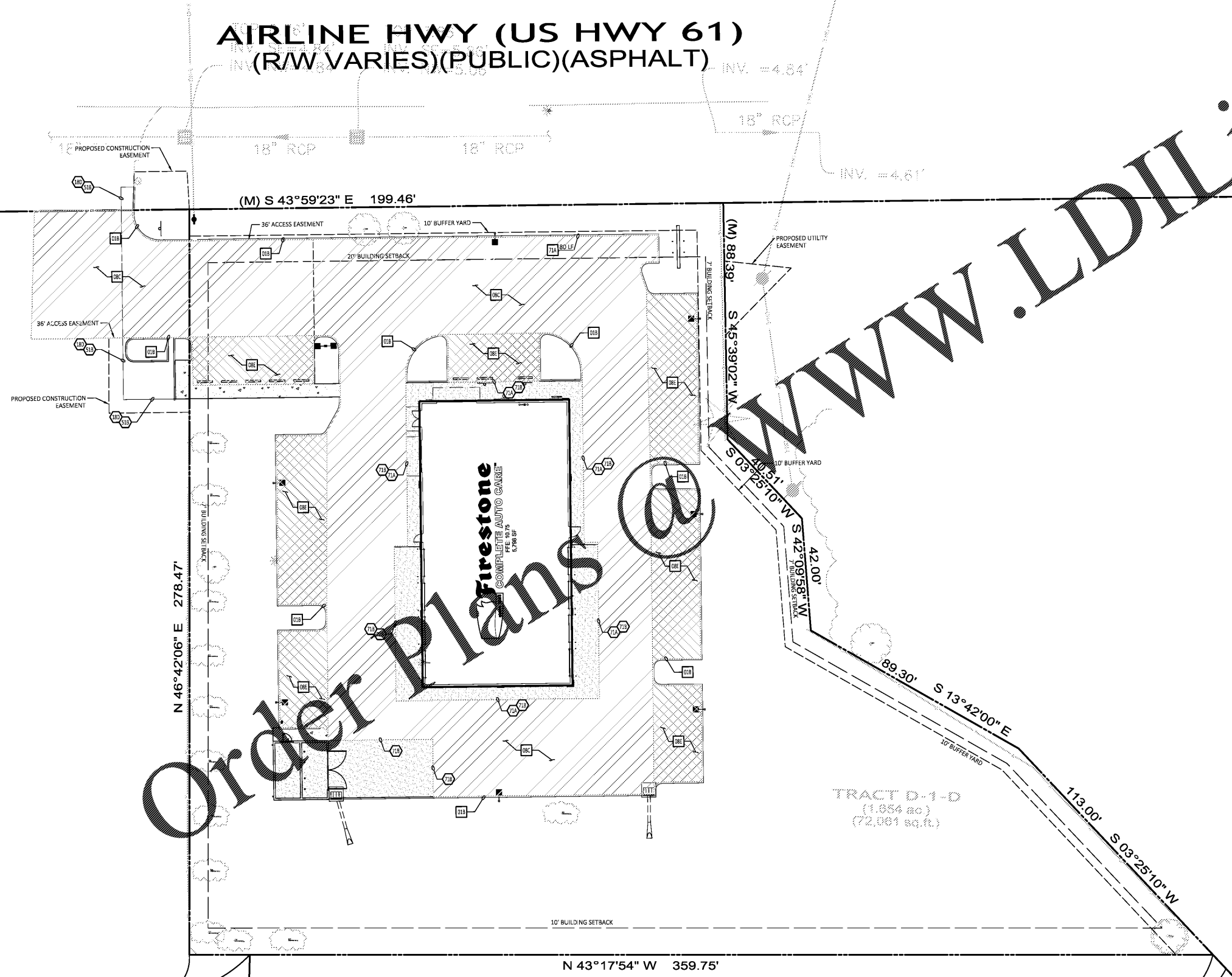


**Know what's below.  
 Call before you dig.**



NOTE:  
 SEE ARCHITECTURAL PLANS FOR EXACT LOCATIONS  
 AND DIMENSIONS OF PORCHES, RAMPS, VESTIBULE,  
 SLOPED PAVING, TRUCK DOCKS, BUILDING UTILITY  
 ENTRANCE LOCATIONS AND PRECISE BUILDING  
 DIMENSIONS.

**AIRLINE HWY (US HWY 61)**  
 (R/W VARIES)(PUBLIC)(ASPHALT) INV. = 4.84'



**LEGEND**

EXISTING	
PROPERTY LINE	REINFORCED CONCRETE PIPE
RIGHT OF WAY LINE	FOUND IRON PIPE/ROD
OVERHEAD ELECTRIC	SET 1/2" IRON PIPE
UNDERGROUND DRAIN LINE	POWER POLE
UNDERGROUND GAS LINE	GUY WIRE
VEGETATION LINE	POLE MOUNTED TRANSFORMER
DRIP LINE	ELECTRIC JUNCTION BOX
FENCE LINE	WATER FAUCET
ASPHALT PAVEMENT	TELEPHONE PEDESTAL
CONCRETE PAVEMENT	SEWER MANHOLE
TEMPORARY BENCH MARK	DRAIN INLET
FOUND IRON PIPE	AIR CONDITIONER UNIT
CHAIN LINK FENCE	AREA LIGHT

PROPOSED	
PROPERTY LINE	
TYPE "A" CURB (PER DETAIL 01A)	
LIMITS OF SIDEWALKS (PER DETAIL 03D)	
LIMITS OF CONCRETE APRON (PER ARCH. PLANS)	

- GENERAL PAVING NOTES**
- CONTRACTOR SHALL INSTALL EXPANSION JOINTS EVERY 60 FEET AND SAWCUT CONTROL JOINTS EVERY 15 FEET FOR CONCRETE PAVEMENT. ALL JOINTS SHALL BE PER DETAIL 08R.
  - THE PAVING CONTRACTOR SHALL COORDINATE WITH THE UTILITY AND IRRIGATION CONTRACTORS TO ENSURE THAT ALL SLEEVES HAS BEEN INSTALLED PRIOR TO PLACEMENT OF PERMANENT PAVEMENT.
  - ALL PAVING AND EARTHWORK OPERATIONS SHALL CONFORM TO THE RECOMMENDATION OF THE GEOTECHNICAL REPORT.
  - REFER TO GEOTECHNICAL REPORT PREPARED BY SOUTHERN EARTH SCIENCES, INC., ENTITLED "PROPOSED FIRESTONE COMPLETE AUTO CARE", DATED MAY 31, 2019, PROJECT NUMBER B19-097, PROVIDED FOR PAVING AND SUBGRADE PREPARATION REQUIREMENTS.
  - ALL DIMENSIONS SHOWN ARE TO THE FACE OF CURB UNLESS OTHERWISE NOTED.
  - UNLESS OTHERWISE SHOWN, CALLED OUT OR SPECIFIED HEREON OR WITHIN THE SPECIFICATIONS, ALL CURB AND GUTTER ADJACENT TO CONCRETE PAVING SHALL BE INSTALLED PER DETAIL 01B. PAVEMENT SHALL BE INSTALLED IN ACCORDANCE WITH PAVEMENT SECTION DETAILS OVER THE ENTIRE PARKING LOT AREA AND ALL APPROACH DRIVES.

- PAVING NOTES**
- 18D MATCH EXISTING PAVEMENT ELEVATIONS.
  - 51B LIMITS OF SAWCUT AND PAVEMENT REMOVAL.
  - 71A PAVEMENT SHALL BE FLUSH (NO CURB AT BUILDING EDGE OR EDGE OF PAVEMENT)
  - 71B LIMITS OF CONCRETE PAVING (PER ARCH. PLANS)

- PAVING DETAILS**
- 01B TYPE B CONCRETE INTEGRAL CURB AND GUTTER
  - 08C HEAVY DUTY CONCRETE PAVING
  - 08E STANDARD DUTY CONCRETE PAVING
  - 71A REVERSED CURB DETAIL

Engineering Associates, Inc.  
 COMPLETE AUTO CARE

**Firestone**  
 COMPLETE AUTO CARE

**NEW FCAC STORE**  
 8 BAY - FCAC - I RIGHT  
 233 S. AIRLINES HWY  
 GONZALES, LA



6 DIGIT NO.: 902556  
 4 DIGIT NO.: 014W  
 ENTITY ID NO.: 1392476  
 SITE ID NO.: 2496  
 PROPERTY NO.: 160013

FILE NAME: 31214 SP.dwg  
 CEI PROJECT NUMBER: 31214  
 REVISION: REV-1 DATE: 9/11/19  
 REVISION #1 - 9/11/19

**BID SET**  
 11.18.19  
 TRCI

SHEET TITLE:  
**PAVING PLAN**

SHEET NUMBER:  
**C6**

JOB # 31214 DRAWING: 31214 SP.dwg LAST SAVED BY: RHARTY

Order Plans @ [www.LDILine.com](http://www.LDILine.com)