

Generated by COMcheck-Web Software Envelope Compliance Certificate

Section 1: Project Information

Energy Code: 2009 IECC
 Project Title: J.H. House Elementary School
 Project Type: New Construction
 Construction Site:
 3100 Zingira Road NE,
 Conyers, Georgia 30012

Owner/Agent:
 Rockdale County Public Schools,
 P.O. Box - 1189
 Conyers, Georgia 30012
 770-483-4730

Designer/Contractor:
 John Gerondelis
 Smallwood, Reynolds, Stewart, Architects
 One Piedmont Center, Suite 303, 3565
 Piedmont Road
 Atlanta 30328
 404-293-5452

Building Location (for weather data):
 Conyers, Georgia
 Climate Zone: 3a
 Vertical Glazing / Wall Area Ratio: 22%

Building User Activity Type(s):
 1-School/University, Nonresidential

Floor Area: 196531

Section 2: Envelope Assemblies and Requirements Checklist

Component Name/Description	Gross Area of Part/Member	Cavity R-Value	Cont. R-Value	Proposed U-Factor	Budget U-Factor
Roof - 1: Metal Building, Standing Seam, (Bldg. Use 1 - School/University)	677	0.0	0.0	1.290	0.055
Roof - 2: Insulation Entirety Above Deck, (Bldg. Use 1 - School/University)	71524			0.043	0.048
Ext. Wall - 1: Steel-Framed, 16in. o.c., (Bldg. Use 1 - School/University)	3268	13.0	10.0	0.055	0.084
Window: Metal Frame, Thermal Break, Perf. Specs., Product ID AGC ENERGY SELECT 28, SHGC 0.28, (Bldg. Use 1 - School/University) (2)	40			0.280	0.650
Door: Perf. Type: Energy code default, Single Pane, Clear, (SHGC 0.80, (Bldg. Use 1 - School/University)	44			1.200	0.900
Ext. Wall - 2: Steel-Framed, 16in. o.c., (Bldg. Use 1 - School/University)	4621	13.0	10.0	0.055	0.084
Window: Metal Frame, Thermal Break, Perf. Specs., Product ID AGC ENERGY SELECT 28, SHGC 0.28, (Bldg. Use 1 - School/University) (2)	1206			0.280	0.650
Door: Perf. Type: Energy code default, Single Pane, Clear, (SHGC 0.80, (Bldg. Use 1 - School/University)	44			1.200	0.900
Ext. Wall - 3: Steel-Framed, 16in. o.c., (Bldg. Use 1 - School/University)	4621	13.0	10.0	0.055	0.084
Window: Metal Frame, Thermal Break, Perf. Specs., Product ID AGC ENERGY SELECT 28, SHGC 0.28, (Bldg. Use 1 - School/University) (2)	1240			0.280	0.650
Door: Perf. Type: Energy code default, Single Pane, Clear, (SHGC 0.80, (Bldg. Use 1 - School/University)	44			1.200	0.900
Ext. Wall - 4: Steel-Framed, 16in. o.c., (Bldg. Use 1 - School/University)	3268	13.0	10.0	0.055	0.084
Window: Metal Frame, Thermal Break, Perf. Specs., Product ID AGC ENERGY SELECT 28, SHGC 0.28, (Bldg. Use 1 - School/University) (2)	40			0.280	0.650

Project Title: J.H. House Elementary School
 Data Filename: [Blank]
 Report date: 10/01/19
 Page 1 of 3

Door: Perf. Type: Energy code default, Single Pane, Clear, (SHGC 0.80, (Bldg. Use 1 - School/University)	44			1.200	0.900
Ext. Wall - 5: Steel-Framed, 16in. o.c., (Bldg. Use 1 - School/University)	4621	13.0	10.0	0.055	0.084
Window: Metal Frame, Thermal Break, Perf. Specs., Product ID AGC ENERGY SELECT 28, SHGC 0.28, (Bldg. Use 1 - School/University) (2)	1206			0.280	0.650
Door: Perf. Type: Energy code default, Single Pane, Clear, (SHGC 0.80, (Bldg. Use 1 - School/University)	44			1.200	0.900
Ext. Wall - 6: Steel-Framed, 16in. o.c., (Bldg. Use 1 - School/University)	4621	13.0	10.0	0.055	0.084
Window: Metal Frame, Thermal Break, Perf. Specs., Product ID AGC ENERGY SELECT 28, SHGC 0.28, (Bldg. Use 1 - School/University) (2)	1240			0.280	0.650
Door: Perf. Type: Energy code default, Single Pane, Clear, (SHGC 0.80, (Bldg. Use 1 - School/University)	44			1.200	0.900
Ext. Wall - 7A: Concrete Block, 8in., Partially Grouted, Cells Empty, Light Density, Furring: Metal, (Bldg. Use 1 - School/University)	525	0.0	10.0	0.074	0.123
Ext. Wall - 7B: Concrete Block, 12in., Partially Grouted, Cells Empty, Light Density, Furring: Metal, (Bldg. Use 1 - School/University)	2560	0.0	10.0	0.072	0.123
Window: Metal Frame, Thermal Break, Perf. Specs., Product ID AGC ENERGY SELECT 28, SHGC 0.28, (Bldg. Use 1 - School/University) (2)	78			0.280	0.650
Door: Perf. Type: Energy code default, Single Pane, Clear, (SHGC 0.80, (Bldg. Use 1 - School/University)	90			1.200	0.900
Ext. Wall - 8A: Concrete Block, 8in., Partially Grouted, Cells Empty, Light Density, Furring: Metal, (Bldg. Use 1 - School/University)	709	0.0	10.0	0.074	0.123
Ext. Wall - 8B: Concrete Block, 12in., Partially Grouted, Cells Empty, Light Density, Furring: Metal, (Bldg. Use 1 - School/University)	883	0.0	10.0	0.072	0.123
Ext. Wall - 9A: Concrete Block, 12in., Partially Grouted, Cells Empty, Light Density, Furring: Metal, (Bldg. Use 1 - School/University)	1343	0.0	0.0	0.254	0.123
Window: Metal Frame, Thermal Break, Perf. Specs., Product ID AGC ENERGY SELECT 28, SHGC 0.28, (Bldg. Use 1 - School/University) (2)	458			0.280	0.650
Door: Perf. Type: Energy code default, Single Pane, Clear, (SHGC 0.80, (Bldg. Use 1 - School/University)	90			1.200	0.900
Ext. Wall - 9B: Steel-Framed, 16in. o.c., (Bldg. Use 1 - School/University)	326	13.0	10.0	0.055	0.084
Ext. Wall - 10: Steel-Framed, 16in. o.c., (Bldg. Use 1 - School/University)	1621	13.0	11.0	0.052	0.084
Window: Metal Frame, Thermal Break, Perf. Specs., Product ID AGC ENERGY SELECT 28, SHGC 0.28, (Bldg. Use 1 - School/University) (2)	1140			0.280	0.650
Door: Perf. Type: Energy code default, Single Pane, Clear, (SHGC 0.80, (Bldg. Use 1 - School/University)	180			1.200	0.900
Ext. Wall - 10A: Steel-Framed, 16in. o.c., (Bldg. Use 1 - School/University)	802	13.0	11.0	0.052	0.084
Ext. Wall - 10B: Steel-Framed, 16in. o.c., (Bldg. Use 1 - School/University)	592	13.0	11.0	0.052	0.084
Ext. Wall - 11: Steel-Framed, 16in. o.c., (Bldg. Use 1 - School/University)	1636	13.0	11.0	0.052	0.084
Window: Metal Frame, Thermal Break, Perf. Specs., Product ID AGC ENERGY SELECT 28, SHGC 0.28, (Bldg. Use 1 - School/University) (2)	798			0.280	0.650
Ext. Wall - 12: Concrete Block, 8in., Partially Grouted, Cells Empty, Light Density, Furring: Metal, (Bldg. Use 1 - School/University)	796	10.0	10.0	0.061	0.123
Window: Metal Frame, Thermal Break, Perf. Specs., Product ID AGC ENERGY SELECT 28, SHGC 0.28, (Bldg. Use 1 - School/University) (2)	27			0.280	0.650
Ext. Wall - 13: Concrete Block, 8in., Partially Grouted, Cells Empty, Light Density, Furring: Metal, (Bldg. Use 1 - School/University)	473	0.0	10.0	0.055	0.123

Project Title: J.H. House Elementary School
 Data Filename: [Blank]
 Report date: 10/01/19
 Page 2 of 3

EXT. Wall - 14A: Concrete Block, 8in., Partially Grouted, Cells Empty, Light Density, Furring: Metal, (Bldg. Use 1 - School/University)	1597	0.0	10.0	0.073	0.123
Door: Ins. Jolied Metal, Swinging, (Bldg. Use 1 - School/University)	48			0.090	0.700
Door: Insulated Metal, Swinging, (Bldg. Use 1 - School/University)	29			0.090	0.700
Door: Perf. Type: Energy code default, Single Pane, Clear, (SHGC 0.80, (Bldg. Use 1 - School/University)	23			1.200	0.900
Ext. Wall - 14B: Steel-Framed, 16in. o.c., (Bldg. Use 1 - School/University)	946	0.0	11.0	0.072	0.084
Window: Metal Frame, Thermal Break, Perf. Specs., Product ID AGC ENERGY SELECT 28, SHGC 0.28, (Bldg. Use 1 - School/University) (2)	402			0.280	0.650
Ext. Wall - 15: Concrete Block, 12in., Partially Grouted, Cells Empty, Light Density, Furring: Metal, (Bldg. Use 1 - School/University)	1111	0.0	10.0	0.072	0.123
Door: Insulated Metal, Swinging, (Bldg. Use 1 - School/University)	110			0.090	0.700
Ext. Wall - 16: Steel-Framed, 16in. o.c., (Bldg. Use 1 - School/University)	2028	13.0	10.0	0.055	0.084
Window: Metal Frame, Thermal Break, Perf. Specs., Product ID AGC ENERGY SELECT 28, SHGC 0.28, (Bldg. Use 1 - School/University) (2)	1111			0.280	0.650
Door: Perf. Type: Energy code default, Single Pane, Clear, (SHGC 0.80, (Bldg. Use 1 - School/University)	58			1.200	0.900
Ext. Wall - 16A: Steel-Framed, 16in. o.c., (Bldg. Use 1 - School/University)	657	13.0	10.0	0.055	0.084
Ext. Wall - 16B: Steel-Framed, 16in. o.c., (Bldg. Use 1 - School/University)	657	13.0	10.0	0.055	0.084
Floor: (Finished Slab-On-Grade, Horizontal with vertical 2 in., (Bldg. Use 1 - School/University)	7152			0.23	

(a) Budget U-factors are used for software baseline calculations ONLY, and are not code requirements.
 (b) Fastener product performance must be certified in accordance with NFPA and requires supporting documentation.

Air Leakage, Component Certification, and Vapor Retarder Requirements:

- All joints and penetrations are caulked, gasketed or sealed with moisture vapor permeable wrapping material installed in accordance with the manufacturer's installation instructions.
- Windows, doors, and skylights certified as meeting leakage requirements.
- Component R-values & U-factors labeled as certified leakage requirements.
- No roof insulation is installed on a suspended ceiling with removable ceiling panels.
- Other components have supporting documentation for approved U-factors.
- Insulation is installed according to manufacturer's instructions, in substantial contact with the surface being insulated, and in a manner that allows the rated R-value without compression of the insulation.
- Stairwells, shaft walls and other exterior air intake and exhaust openings in the building envelope are equipped with motorized dampers.
- Door and loading dock doors are weather sealed.
- Insulated glazing installed in the building envelope are Type IC rated as meeting ASTM E928, are sealed with gasket or caulk.
- Building envelope penetrations have a vestibule equipped with self-closing devices.

Entrances:

- Entrances with revolving doors.
- Doors not intended to be used as a building entrance.
- Doors that open directly from a space less than 300sq. ft. in area.
- Doors used primarily to facilitate vehicular movement or materials handling and adjacent personnel doors.
- Doors opening directly from a sleeping/working unit.

Section 3: Compliance Statement

Compliance Statement: The proposed envelope design represented in this document is consistent with the building plans, specifications and other calculations submitted with this permit application. The proposed envelope system has been designed to meet the 2009 IECC requirements in COMcheck-Web and to comply with the mandatory energy code requirements in the Requirements Checklist.

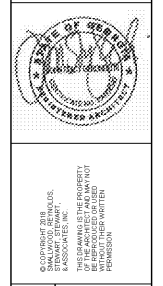
John Gerondelis
 Name Title Principal
 Date 10/01/19

Project Title: J.H. House Elementary School
 Data Filename: [Blank]
 Report date: 10/01/19
 Page 3 of 3

REV. NO.	DATE	REMARKS
0010	10/01/19	DATE PRELIMINARY
0011	10/01/19	PROGRESS PRINT
0012	10/01/19	DATE CHECK SET
0013	10/01/19	DATE FOR PERMIT
0014	10/01/19	DATE PRINT

INSTRUCTIONAL UNIT	45	61
REGULAR CLASSROOMS		
PHYSICAL EDUCATION		
MUSIC		
ART		
TOTAL		

PROJECT EQUIPMENT	TO BE ASSIGNED
REGULAR CLASSROOMS	
PHYSICAL EDUCATION	
MUSIC	
ART	
TOTAL	



GENERAL NOTES AND COM CHECK
 J.H. HOUSE ELEMENTARY SCHOOL
 3100 Zingira Road NE, Conyers, GA 30012
 DATE: 10-01-2019
 JOB NO: 218036.00
 SHEET NO: T0-02
 ISSUED FOR CONSTRUCTION

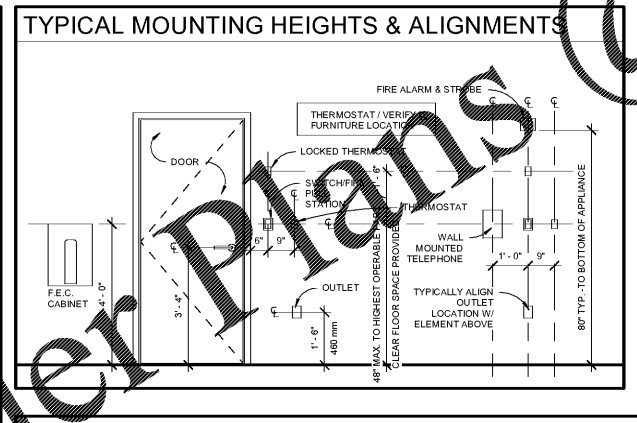
ARCHITECTURAL SYMBOLS

DRAWING TITLE

- DRAWING NUMBER
- SHEET NUMBER
- PARENT VIEW
- DRAWING NUMBER
- ELEVATION SYMBOL
- ELEVATION NUMBER
- SHEET NUMBER
- SECTION SYMBOL
- SECTION NUMBER
- SHEET NUMBER
- DETAIL SYMBOL
- DETAIL NUMBER
- SHEET NUMBER
- INTERIOR ELEVATION SYMBOL
- DETAIL NUMBER
- SHEET NUMBER
- COLUMN DESIGNATION
- COLUMN LETTER/NUMBER
- SPACE/ROOM NAME AND NUMBER
- ROOM NUMBER

DOOR NUMBER

- DOOR TYPE SYMBOL
- ELEVATION MATERIAL SYMBOL
- LOUVER TYPE SYMBOL
- TOILET ACCESSORY SYMBOL
- PARTITION TYPE SYMBOL
- TARGET / WORK POINT / ELEVATION SYMBOL / SPOT ELEVATION
- FLOOR PLAN SYMBOL
- REVISION SYMBOL
- SEISMIC JOINT
- CONTROL JOINT
- CENTER LINE
- NORTH ARROW



ABBREVIATIONS

A.C.P.	ACOUSTICAL CEILING PANEL
A.F.F.	ABOVE FINISHED FLOOR
B.O.D.	BOTTOM OF
C.M.	CONCRETE MASONRY UNIT
C.J.	CONTROL JOINT
E.J.	EXPANSION JOINT
F.D.	FLOOR DRAIN
F.E.B.	FIRE EXTINGUISHER BRACKET
F.E.C.	FIRE EXTINGUISHER CABINET
F.F.E.	FINISHED FLOOR ELEVATION
G.W.B.	GYP-SUM WALL BOARD
H.C.	HANDICAPPED ACCESSIBLE
H.R.	HOUR
LAV.	LAVATORY
MAX.	MAXIMUM
M.B.	MARKER BOARD
M.R.	MAP RAIL
M.N.	MINIMUM
M.O.	MASONRY OPENING
N.C.	NOT IN CONSTRUCTION CONTRACT
N.T.S.	NOT TO SCALE
O.C.C.	OCCUPANTS
O.H.	OPPOSITE HAND
R.O.	ROUGH OPENING
S.F.	SQUARE FEET
S.M.	SMILAR
T.B.	TACK BOARD
T.S.	TACK STRIP
T.O.	TOP OF
T.O.M.	TOP OF MASONRY
U.N.O.	UNLESS NOTED OTHERWISE

GENERAL NOTES

- DO NOT SCALE DRAWINGS; DIMENSIONS GOVERN.
- LARGER SCALE PLANS & DETAILS WILL TAKE PRECEDENCE OVER SMALLER SCALE DRAWINGS.
- THE CONSTRUCTION MANAGER SHALL BE RESPONSIBLE FOR OBTAINING ALL REQUIRED BUILDING PERMITS.
- THE CONSTRUCTION MANAGER SHALL BE RESPONSIBLE FOR PROVIDING ALL WORK AND MATERIALS IN STRICT ACCORDANCE WITH ALL APPLICABLE CODES, REGULATIONS AND ORDINANCES HAVING JURISDICTION.
- MATERIALS, DIMENSIONS AND ALL OTHER CONDITIONS NOT OTHERWISE INDICATED IN THESE CONSTRUCTION DOCUMENTS SHALL BE INTERPRETED AS HAVING THE SAME MEANING AS THOSE MOST SIMILARLY DETAILED AND MORE FULLY DEFINED ELSEWHERE WITHIN THESE DOCUMENTS.
- THE CONSTRUCTION MANAGER SHALL FIELD VERIFY ALL DIMENSIONS INDICATED WITHIN THESE DOCUMENTS AND SHALL NOTIFY THE ARCHITECT OF ANY VARIATION PRIOR TO THE PURCHASING OF MATERIALS, STARTING FABRICATION OR BEGINNING CONSTRUCTION.
- CUTTING AND PATCHING: EACH MISCELLANEOUS ITEM OF CUTTING, PATCHING OR FITTING IS NOT NECESSARILY INDIVIDUALLY DESCRIBED HEREIN, THE CONSTRUCTION MANAGER SHALL BE RESPONSIBLE FOR ALL CUTTING, PATCHING AND FITTING NECESSARY TO ACCOMMODATE THE ENTIRE SCOPE OF THE WORK.
- THE CONSTRUCTION MANAGER, UPON AWARDING CONTRACTS TO SUBCONTRACTORS, SHALL SUBMIT TO THE ARCHITECT AND THE OWNER A LIST OF ALL ITEMS AND THEIR DELIVERY SCHEDULES. THE CONSTRUCTION MANAGER SHALL IDENTIFY ALL LONG-LEAD TIME ITEMS ON THE PROJECT (I.E., MATERIALS, FABRICS, HARDWARE, ETC.).
- FLOOR TOLERANCE: IN LAYING OUT AND DETAILING THE WORK TO BE COMPLETED, CONSIDERATION SHALL BE GIVEN TO VARIATIONS IN THE FLOOR LEVELNESS RESULTING FROM CONSTRUCTION AND/OR LIVE AND DEAD LOADS IMPOSED ON THE STRUCTURE. FIELD VERIFICATION SHALL BE MADE OF CONDITIONS TO VERIFY CONSTRUCTION TOLERANCES. ALIGNMENT OF DOOR HEADS AND OTHER HORIZONTAL ELEMENTS SHALL BE ESTABLISHED AT A CONSTANT LEVEL AND SHALL NOT FOLLOW VARIATIONS IN FLOOR PLANE. LEVEL FLOORS AS REQUIRED USING APPROVED LEVELING COMPOUND.
- ALL WOOD USED AS STUDS, BLOCKING OR BRACING SHALL BE FIRE TREATED. CONSTRUCTION MANAGER IS RESPONSIBLE FOR PROVIDING ALL NECESSARY REINFORCING TO ACCOMMODATE INTERIOR FINISHES, FIXTURES AND EQUIPMENT AS DESCRIBED IN THESE DOCUMENTS.
- ALL FASTENERS AND ATTACHMENTS SHALL BE FULLY CONCEALED FROM VIEW, UNLESS NOTED OTHERWISE.
- DIMENSIONS NOTED AS "CLEAR" OR "CRITICAL" SHALL BE MEASURED FROM FINISHED FACE TO FINISHED FACE.
- PROVIDE AND INSTALL EQUIPMENT AND/OR APPLIANCES EQUIPMENT AND APPLIANCES. THE CONTRACTOR SHALL SPECIFY UNLESS OTHERWISE NOTED. CONTRACTOR SHALL VERIFY THE PLUMBING AND ELECTRICAL REQUIREMENTS OF ALL SUCH APPLIANCES.
- PATCH AND SEAL ALL PENETRATIONS IN THE FLOOR AND PARTITIONS TO COMPLY WITH APPLICABLE BUILDING AND/OR FIRE, LIFE SAFETY CODES.
- "TYPICAL" MEANS THE REFERENCED DETAIL SHALL APPLY FOR ALL SIMILAR CONDITIONS UNLESS OTHERWISE NOTED.
- THE CONSTRUCTION MANAGER IS RESPONSIBLE FOR ALL MECHANICAL AND ELECTRICAL ITEMS INDICATED ON THE ARCHITECTURAL, MECHANICAL AND ELECTRICAL DRAWINGS. ALL ITEMS INDICATED ON ANY DRAWING ARE TO BE INCLUDED AS A COMPLETE SYSTEM.

