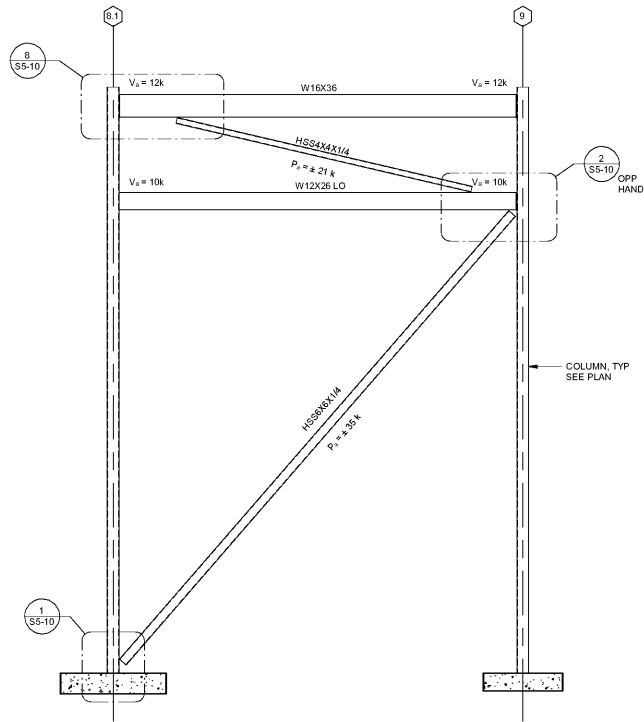
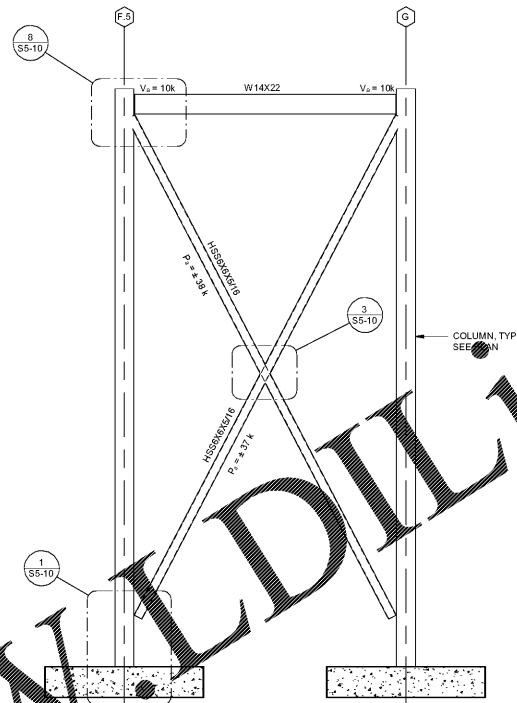


Order Plans @ www.WLDIline.com



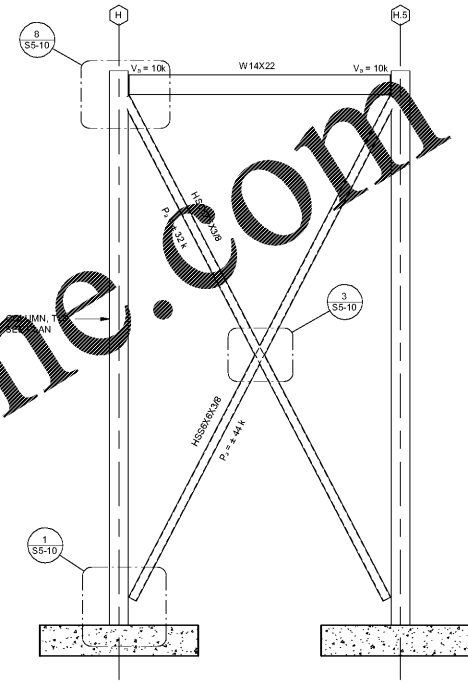
NOTES:
1. Va = x INDICATES MAXIMUM ALLOWABLE SHEAR IN KIPS.
2. Pa = x INDICATES MAXIMUM ALLOWABLE AXIAL FORCE IN KIPS.

15 BRACED FRAMING ALONG GL F.1 - PART A
1/4" = 1'-0"



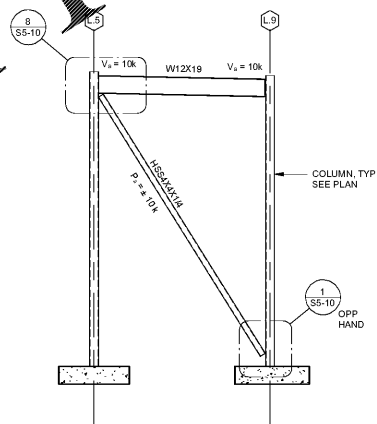
NOTES:
1. Va = x INDICATES MAXIMUM ALLOWABLE SHEAR IN KIPS.
2. Pa = x INDICATES MAXIMUM ALLOWABLE AXIAL FORCE IN KIPS.

7 BRACED FRAME ALONG GL G.11.1 - PART A
1/4" = 1'-0"



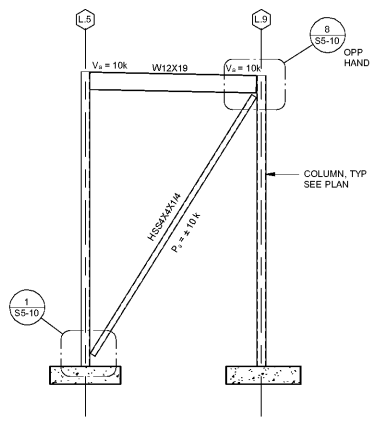
NOTES:
1. Va = x INDICATES MAXIMUM ALLOWABLE SHEAR IN KIPS.
2. Pa = x INDICATES MAXIMUM ALLOWABLE AXIAL FORCE IN KIPS.

3 BRACED FRAME ALONG GL H.11.1 - PART A
1/4" = 1'-0"



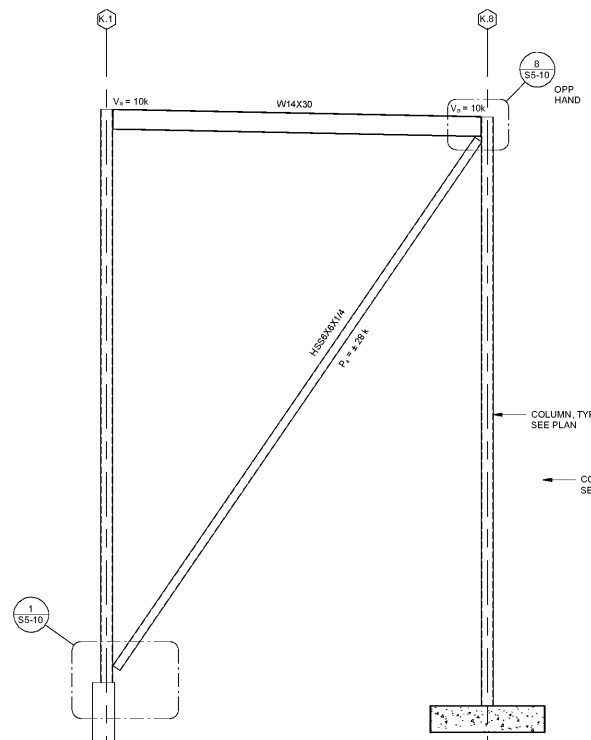
NOTES:
1. Va = x INDICATES MAXIMUM ALLOWABLE SHEAR IN KIPS.
2. Pa = x INDICATES MAXIMUM ALLOWABLE AXIAL FORCE IN KIPS.

13 BRACED FRAME ALONG GL 9.2 - PART A
1/4" = 1'-0"



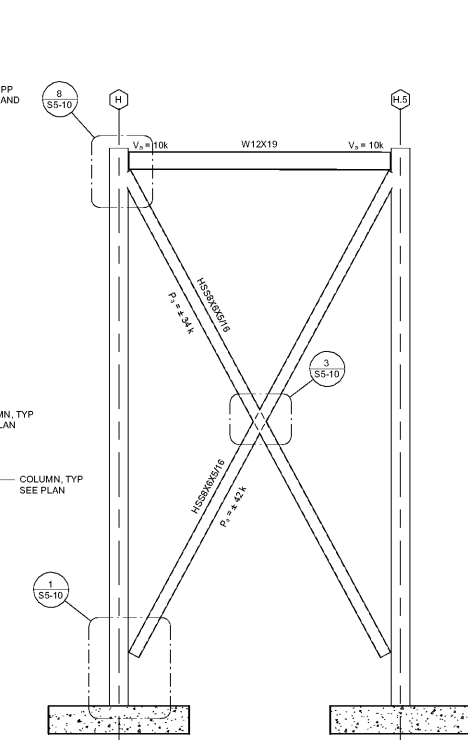
NOTES:
1. Va = x INDICATES MAXIMUM ALLOWABLE SHEAR IN KIPS.
2. Pa = x INDICATES MAXIMUM ALLOWABLE AXIAL FORCE IN KIPS.

9 BRACED FRAME ALONG GL 8.1 - PART A
1/4" = 1'-0"



NOTES:
1. Va = x INDICATES MAXIMUM ALLOWABLE SHEAR IN KIPS.
2. Pa = x INDICATES MAXIMUM ALLOWABLE AXIAL FORCE IN KIPS.

5 BRACED FRAME ALONG GL 8.1 - PART A
1/4" = 1'-0"



NOTES:
1. Va = x INDICATES MAXIMUM ALLOWABLE SHEAR IN KIPS.
2. Pa = x INDICATES MAXIMUM ALLOWABLE AXIAL FORCE IN KIPS.

1 BRACED FRAME ALONG GL 8 - PART A
1/4" = 1'-0"

Smallwood, Reynolds, Stewart & Associates, Inc. Architects

One Piedmont Center, Suite 303 3565 Piedmont Road Atlanta, Georgia 30305

FRAMING DETAILS
J.H. HOUSE ELEMENTARY SCHOOL
 3100 Zingira Road NE, Conyers, GA 30012

DATE: 10.01.2019
 JOB NO: 218036.00
 SHEET NO: S5-06

ISSUED FOR CONSTRUCTION

REV. NO.	DATE	REVISIONS / PRINTED	REMARKS
1	10.01.19	ISSUED FOR PERMIT/ISSUE PLAN	
2	10.01.19	ISSUED FOR PERMIT/ISSUE PLAN	
3	10.01.19	ISSUED FOR PERMIT/ISSUE PLAN	
4	10.01.19	ISSUED FOR PERMIT/ISSUE PLAN	
5	10.01.19	ISSUED FOR PERMIT/ISSUE PLAN	
6	10.01.19	ISSUED FOR PERMIT/ISSUE PLAN	
7	10.01.19	ISSUED FOR PERMIT/ISSUE PLAN	
8	10.01.19	ISSUED FOR PERMIT/ISSUE PLAN	
9	10.01.19	ISSUED FOR PERMIT/ISSUE PLAN	
10	10.01.19	ISSUED FOR PERMIT/ISSUE PLAN	
11	10.01.19	ISSUED FOR PERMIT/ISSUE PLAN	
12	10.01.19	ISSUED FOR PERMIT/ISSUE PLAN	
13	10.01.19	ISSUED FOR PERMIT/ISSUE PLAN	
14	10.01.19	ISSUED FOR PERMIT/ISSUE PLAN	
15	10.01.19	ISSUED FOR PERMIT/ISSUE PLAN	
16	10.01.19	ISSUED FOR PERMIT/ISSUE PLAN	
17	10.01.19	ISSUED FOR PERMIT/ISSUE PLAN	
18	10.01.19	ISSUED FOR PERMIT/ISSUE PLAN	
19	10.01.19	ISSUED FOR PERMIT/ISSUE PLAN	
20	10.01.19	ISSUED FOR PERMIT/ISSUE PLAN	
21	10.01.19	ISSUED FOR PERMIT/ISSUE PLAN	
22	10.01.19	ISSUED FOR PERMIT/ISSUE PLAN	
23	10.01.19	ISSUED FOR PERMIT/ISSUE PLAN	
24	10.01.19	ISSUED FOR PERMIT/ISSUE PLAN	
25	10.01.19	ISSUED FOR PERMIT/ISSUE PLAN	
26	10.01.19	ISSUED FOR PERMIT/ISSUE PLAN	
27	10.01.19	ISSUED FOR PERMIT/ISSUE PLAN	
28	10.01.19	ISSUED FOR PERMIT/ISSUE PLAN	
29	10.01.19	ISSUED FOR PERMIT/ISSUE PLAN	
30	10.01.19	ISSUED FOR PERMIT/ISSUE PLAN	
31	10.01.19	ISSUED FOR PERMIT/ISSUE PLAN	
32	10.01.19	ISSUED FOR PERMIT/ISSUE PLAN	
33	10.01.19	ISSUED FOR PERMIT/ISSUE PLAN	
34	10.01.19	ISSUED FOR PERMIT/ISSUE PLAN	
35	10.01.19	ISSUED FOR PERMIT/ISSUE PLAN	
36	10.01.19	ISSUED FOR PERMIT/ISSUE PLAN	
37	10.01.19	ISSUED FOR PERMIT/ISSUE PLAN	
38	10.01.19	ISSUED FOR PERMIT/ISSUE PLAN	
39	10.01.19	ISSUED FOR PERMIT/ISSUE PLAN	
40	10.01.19	ISSUED FOR PERMIT/ISSUE PLAN	
41	10.01.19	ISSUED FOR PERMIT/ISSUE PLAN	
42	10.01.19	ISSUED FOR PERMIT/ISSUE PLAN	
43	10.01.19	ISSUED FOR PERMIT/ISSUE PLAN	
44	10.01.19	ISSUED FOR PERMIT/ISSUE PLAN	
45	10.01.19	ISSUED FOR PERMIT/ISSUE PLAN	
46	10.01.19	ISSUED FOR PERMIT/ISSUE PLAN	
47	10.01.19	ISSUED FOR PERMIT/ISSUE PLAN	
48	10.01.19	ISSUED FOR PERMIT/ISSUE PLAN	
49	10.01.19	ISSUED FOR PERMIT/ISSUE PLAN	
50	10.01.19	ISSUED FOR PERMIT/ISSUE PLAN	
51	10.01.19	ISSUED FOR PERMIT/ISSUE PLAN	

INSTRUCTIONAL UNIT	BLUING AREA	LEVEL OF COVERED AREAS (I.E. CANOPIES)	COVERED AREAS (I-BY2)	TOTAL
REGULAR CLASSROOMS	71,153 SF			
REGULAR PLEX AREAS	32,239 SF			
MUSIC	108,631 SF			
PHYSICAL EDUCATION				
ART CENTER				
ART				
TOTAL	212,023 SF	5,188 SF	5,188 SF	217,211 SF

PROJECT SUMMARY:
 PROJECT: J.H. HOUSE ELEMENTARY SCHOOL
 GRADES: PRE-K THROUGH 5TH
 P.T.E. #00
 C.O.D.E. # TO BE ASSIGNED

RCPS

STATE OF GEORGIA
 PROFESSIONAL ARCHITECT
 JAMES W. STEWART
 10010 WOODBRIDGE DRIVE
 ATLANTA, GA 30328
 (404) 525-1100
 WWW.JWSA.COM