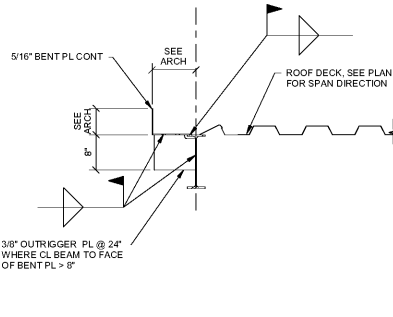
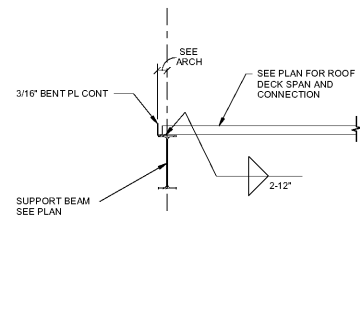


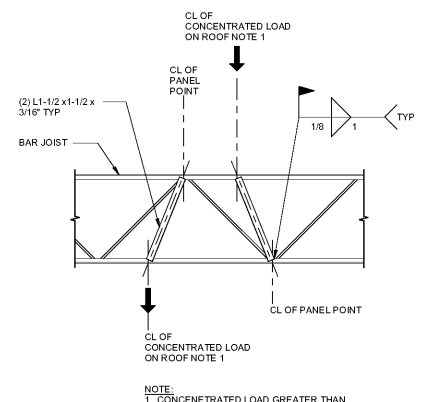
20 TYPICAL EXTERIOR ROOF DECK AT DECK EDGE  
3/4" = 1'-0"



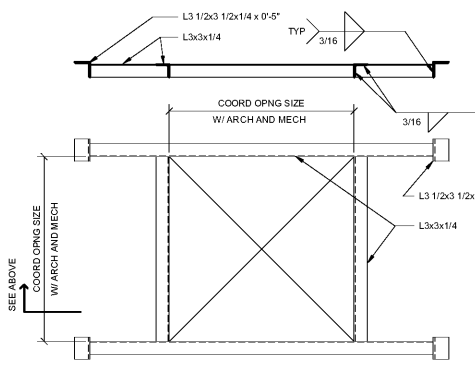
16 SECTION AT ROOF DECK EDGE  
3/4" = 1'-0"



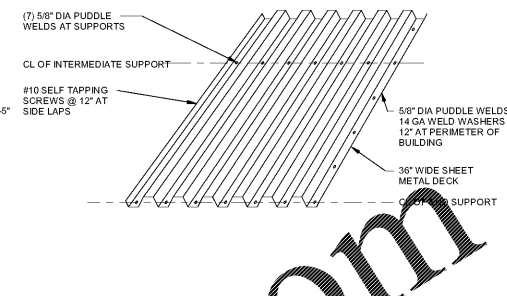
12 TYPICAL JOIST REINFORCEMENT (CONCENTRATED LOAD)  
3/4" = 1'-0"



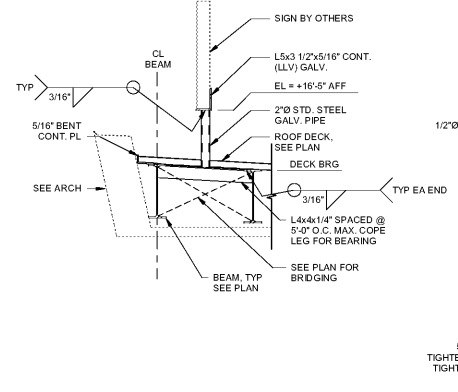
8 TYPICAL FRAMING AT ROOF DECK OPENING  
3/4" = 1'-0"



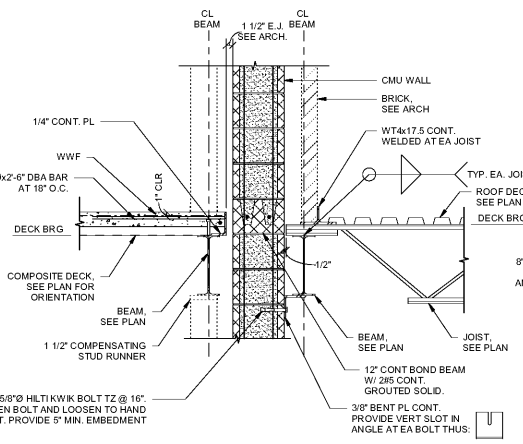
4 TYPICAL ROOF DECK ATTACHMENT (WIDE SHEET)  
3/4" = 1'-0"



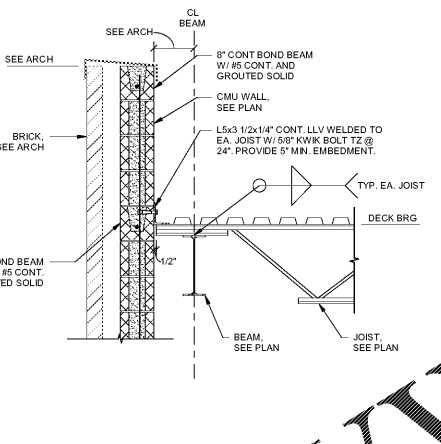
19 LOW ROOF SECTION - JOIST PARALLEL  
3/4" = 1'-0"



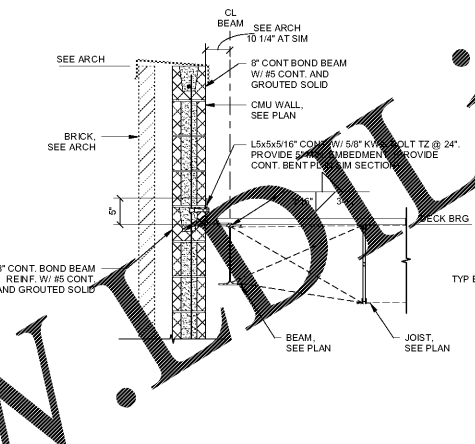
15 ROOF SECTION AT EXPANSION JOINT - JOIST PERPENDICULAR  
3/4" = 1'-0"



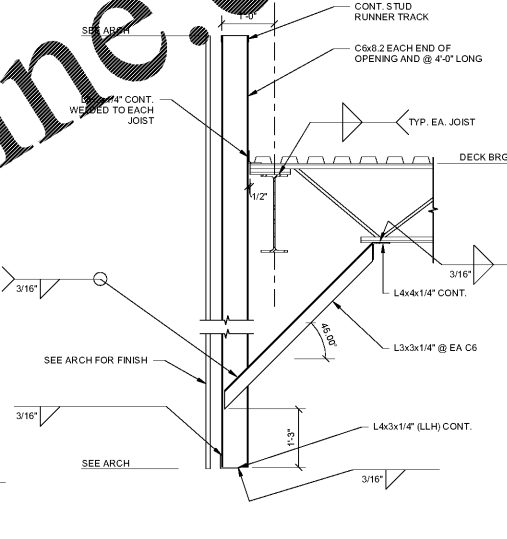
11 ROOF SECTION - JOIST PERPENDICULAR  
3/4" = 1'-0"



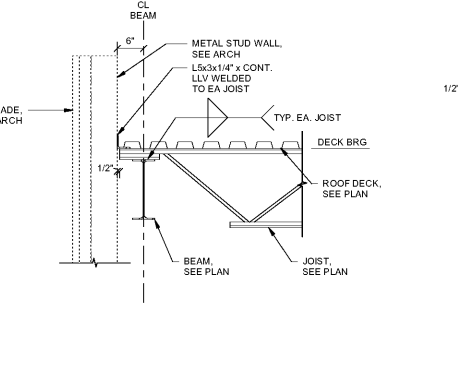
7 ROOF SECTION - JOIST PARALLEL  
3/4" = 1'-0"



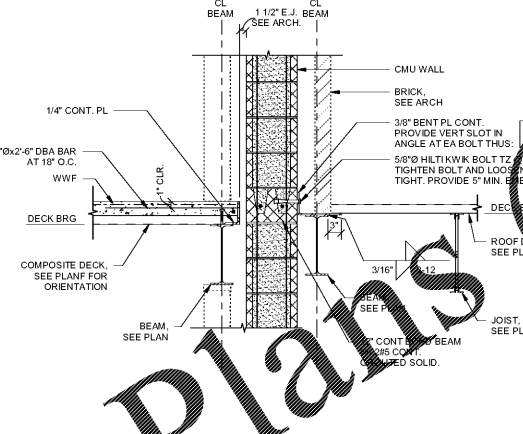
2 ROOF SECTION - PART B & C  
3/4" = 1'-0"



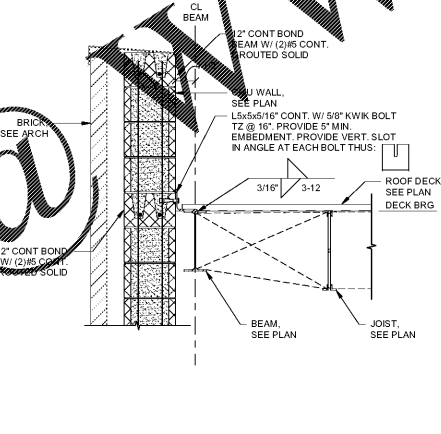
18 LOW ROOF SECTION - JOIST PERPENDICULAR  
3/4" = 1'-0"



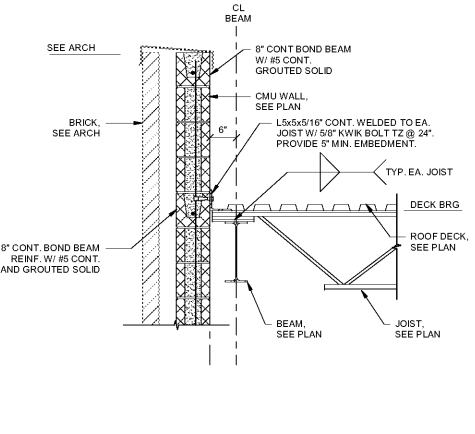
14 ROOF SECTION - EXPANSION JOINT - JOIST PARALLEL  
3/4" = 1'-0"



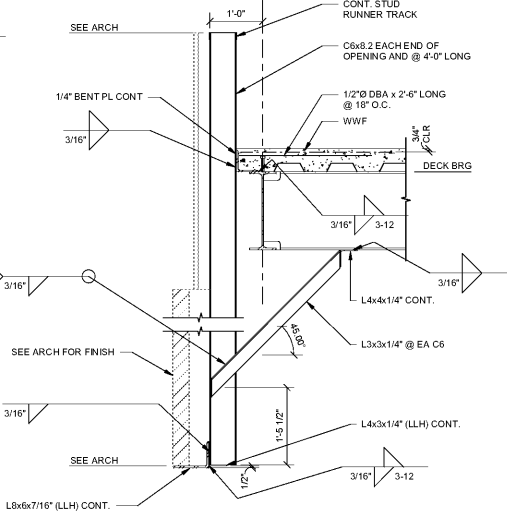
10 ROOF SECTION - JOIST PARALLEL PART D  
3/4" = 1'-0"



6 ROOF SECTION - JOIST PERPENDICULAR PART D  
3/4" = 1'-0"

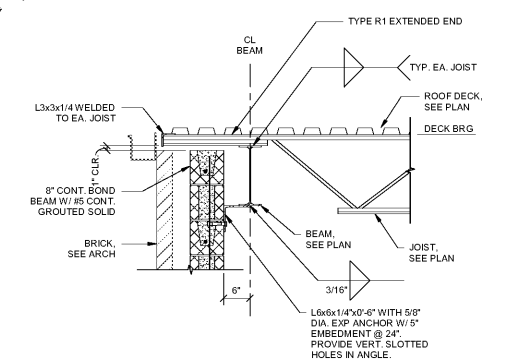


1 TYPICAL BRICK SHELF AT FRAMED FLOOR  
3/4" = 1'-0"

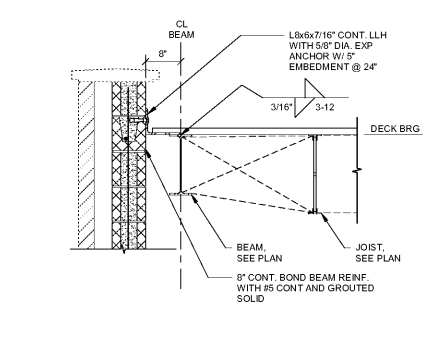


13 LOW ROOF SECTION - JOIST PERPENDICULAR PART D  
3/4" = 1'-0"

13 LOW ROOF SECTION - JOIST PERPENDICULAR PART D  
3/4" = 1'-0"



9 LOW ROOF SECTION - JOIST PARALLEL PART D  
3/4" = 1'-0"



Order Plans @ WWW.LDLINE.COM

Smallwood, Reynolds, Stewart & Associates, Inc. Architects  
 One Piedmont Center, Suite 303 3565 Piedmont Road Atlanta, Georgia 30305

REV. NO.	DATE	REVISIONS / PRINTED
10.10.19	10.10.19	ISSUED FOR PERMIT/ISSUE PLAN
10.10.19	10.10.19	ISSUED FOR PERMIT/ISSUE PLAN

INSTRUCTIONAL UNIT	REGULAR CLASSROOMS	PHYSICAL EDUCATION	ART	TOTAL
45	45	45	45	180
46	46	46	46	184
47	47	47	47	188
48	48	48	48	192
49	49	49	49	196
50	50	50	50	200
51	51	51	51	204
52	52	52	52	208
53	53	53	53	212
54	54	54	54	216
55	55	55	55	220
56	56	56	56	224
57	57	57	57	228
58	58	58	58	232
59	59	59	59	236
60	60	60	60	240
61	61	61	61	244
62	62	62	62	248
63	63	63	63	252
64	64	64	64	256
65	65	65	65	260
66	66	66	66	264
67	67	67	67	268
68	68	68	68	272
69	69	69	69	276
70	70	70	70	280
71	71	71	71	284
72	72	72	72	288
73	73	73	73	292
74	74	74	74	296
75	75	75	75	300
76	76	76	76	304
77	77	77	77	308
78	78	78	78	312
79	79	79	79	316
80	80	80	80	320
81	81	81	81	324
82	82	82	82	328
83	83	83	83	332
84	84	84	84	336
85	85	85	85	340
86	86	86	86	344
87	87	87	87	348
88	88	88	88	352
89	89	89	89	356
90	90	90	90	360
91	91	91	91	364
92	92	92	92	368
93	93	93	93	372
94	94	94	94	376
95	95	95	95	380
96	96	96	96	384
97	97	97	97	388
98	98	98	98	392
99	99	99	99	396
100	100	100	100	400

PROJECT SUMMARY: J.H. HOUSE ELEMENTARY SCHOOL  
 3100 Zingira Road NE, Conyers, GA 30012  
 COVERED AREAS (E/CANOPY): 5,188 SF  
 COVERED AREAS (I/BY 2): 2,258 SF  
 TOTAL: 7,446 SF

DATE: 10.01.2019  
 JOB NO.: 218036.00  
 SHEET NO.: S5-03

ISSUED FOR CONSTRUCTION