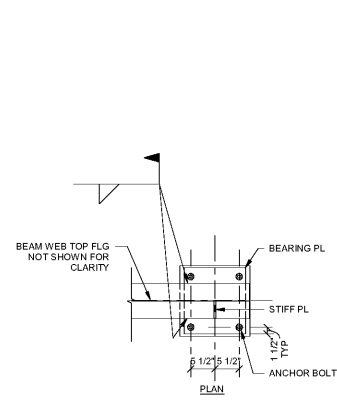


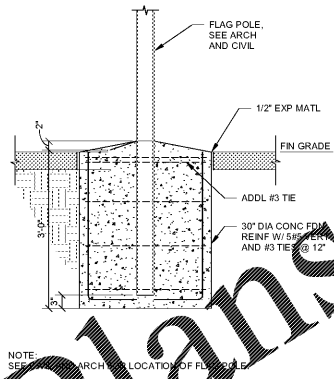
NOTE:
 1. DIMENSIONS TO BE VERIFIED BY CONTRACTOR AFTER COOLING TOWER IS PURCHASED. COOLING TOWER MAX WT = 10,760 LBS.
 2. SEE MECHANICAL DRAWINGS FOR LOCATION AND ORIENTATION OF TOWER.
 3. ALL STEEL FOR SUPPORT SHALL BE HOT DIPPED GALVANIZED AFTER FABRICATION.
 4. C.V.X. INDICATES VERTICAL X-BRACE BETWEEN COOLING TOWER SUPPORT AND FINISHED GRADE. USE 3/4\"/>

19 COOLING TOWER SUPPORT FRAMING PLAN
 1/2" = 1'-0"



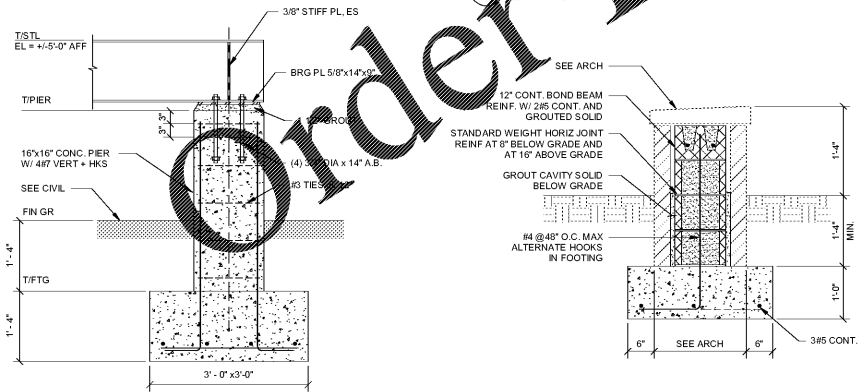
NOTE:
 CONTRACTOR TO COORDINATE TOP OF STEEL ELEVATION W/ COOLING TOWER MANUF PRIOR TO FABRICATION

17 TYPICAL COOLING TOWER SUPPORT
 3/4" = 1'-0"



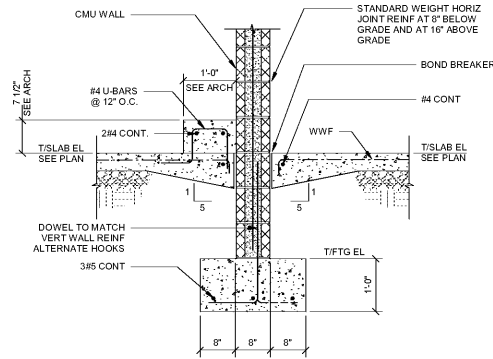
NOTE:
 SEE ARCH FOR LOCATION OF FLAG POLE

14 FLAG POLE FOOTING DETAIL
 1/2" = 1'-0"

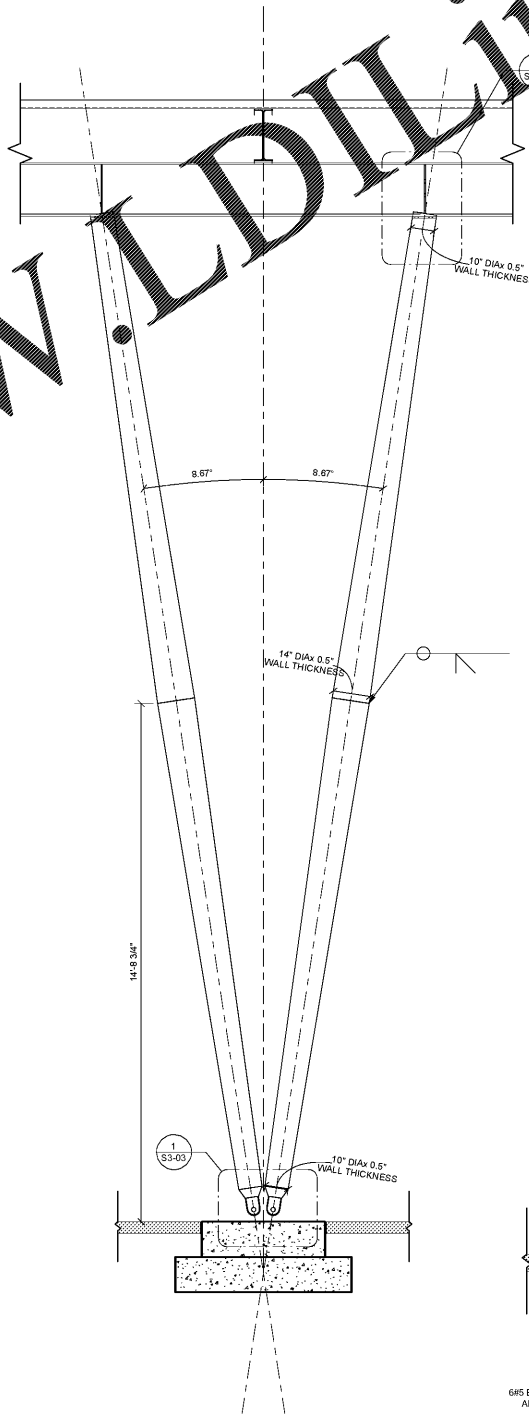


NOTE:
 SEE ARCH AND CIVIL FOR SEAT WALL LOCATION.

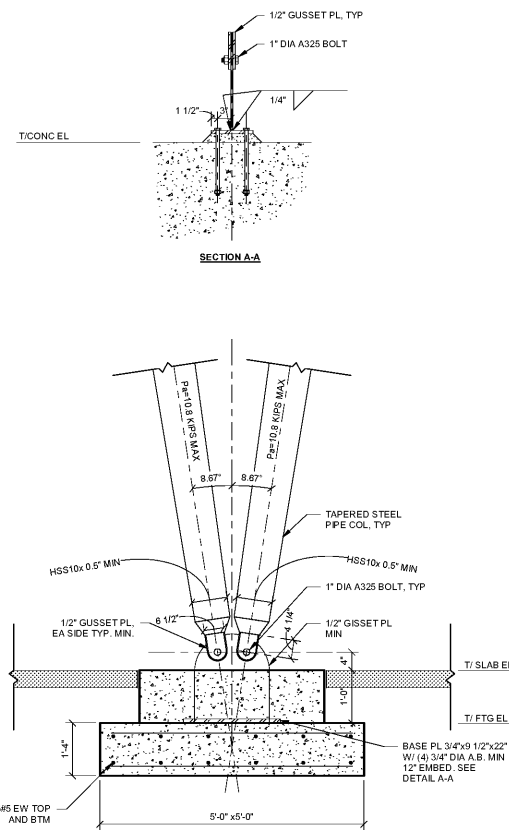
13 SECTION AT EXTERIOR WALL
 3/4" = 1'-0"



9 SECTION AT CONCRETE CURB
 3/4" = 1'-0"



5 TAPERED COLUMN ELEVATION
 1/2" = 1'-0"



1 TAPERED COLUMN CONNECTION DETAIL
 3/4" = 1'-0"

REV. NO.	DATE	REVISIONS / PRINTED	REMARKS
46	10/31/19	ISSUE FOR PERMIT/DISC PLAN	

INSTRUCTIONAL UNIT	BLDG AREA	LEVEL SQ	TOTAL	COVERED AREAS (I.E. CANOPIES)	TOTAL
REGULAR CLASSROOMS	71,153 SF	71,153			
MUSIC	3,238 SF	3,238			
PHYSICAL EDUCATION CENTER	106,531 SF	106,531			
PHYSICAL EDUCATION CENTER				5,188 SF	5,188
ART				2,255 SF	2,255
TOTAL					

PROJECT EQUIPMENT	BLDG AREA	LEVEL SQ	TOTAL	COVERED AREAS (I.E. CANOPIES)	TOTAL
REGULAR CLASSROOMS	71,153 SF	71,153			
MUSIC	3,238 SF	3,238			
PHYSICAL EDUCATION CENTER	106,531 SF	106,531			
PHYSICAL EDUCATION CENTER				5,188 SF	5,188
ART				2,255 SF	2,255
TOTAL					



SMALLWOOD, REYNOLDS, STEWART & ASSOCIATES, INC.
 PROFESSIONAL ENGINEER
 STATE OF GEORGIA
 LICENSE NO. 10000

FOUNDATION DETAILS
J.H. HOUSE ELEMENTARY SCHOOL
 3100 Zingira Road NE, Conyers, GA 30012

DATE: 10.01.2019
 JOB NO: 218036.00
 SHEET NO: S3-03

Smallwood, Reynolds, Stewart & Associates, Inc. Architects | One Piedmont Center, Suite 303 3565 Piedmont Road Atlanta, Georgia 30305

ISSUED FOR CONSTRUCTION