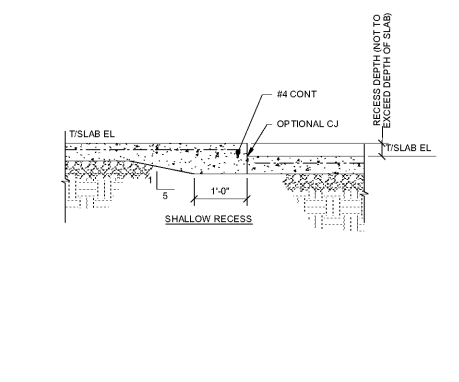
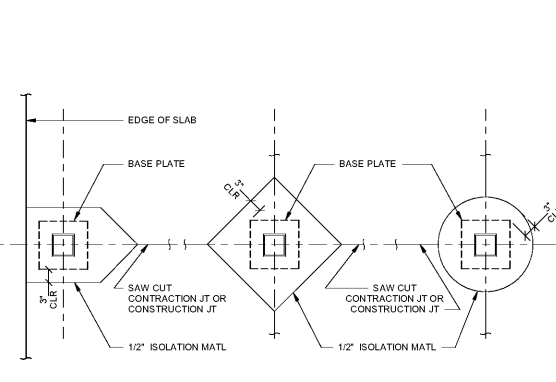


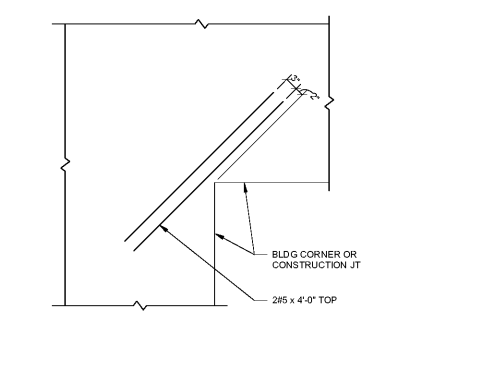
20 TYPICAL GRADE SUPPORTED SLAB AT CMU WALL  
S3-01 3/4" = 1'-0"



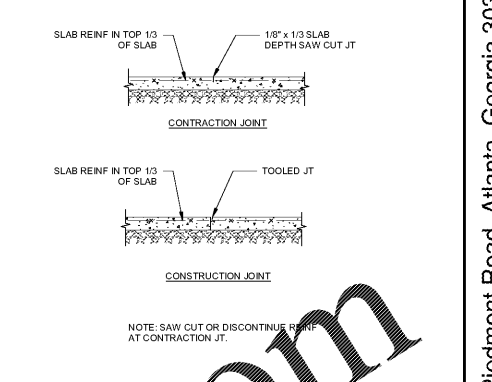
16 TYPICAL GRADE SUPPORTED SLAB AT RECESS  
S3-01 3/4" = 1'-0"



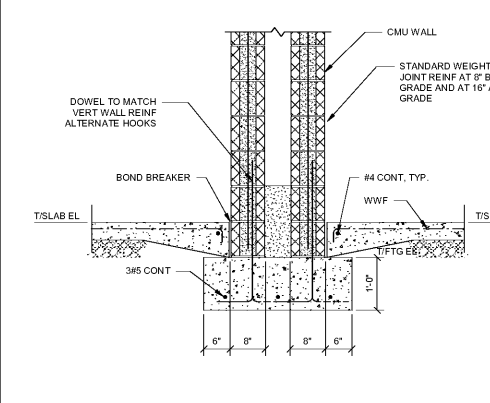
12 TYPICAL ISOLATION JOINT AT STEEL COLUMNS  
S3-01 3/4" = 1'-0"



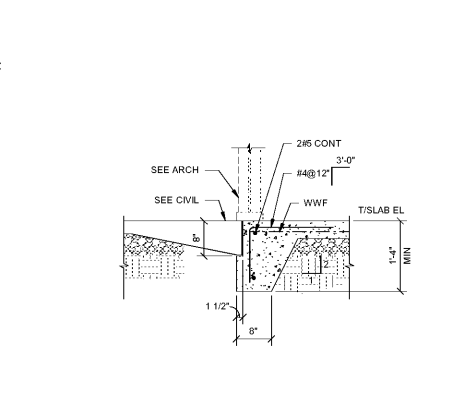
8 TYPICAL REINFORCEMENT AT SLAB RE-ENTRANT CORNER  
S3-01 3/4" = 1'-0"



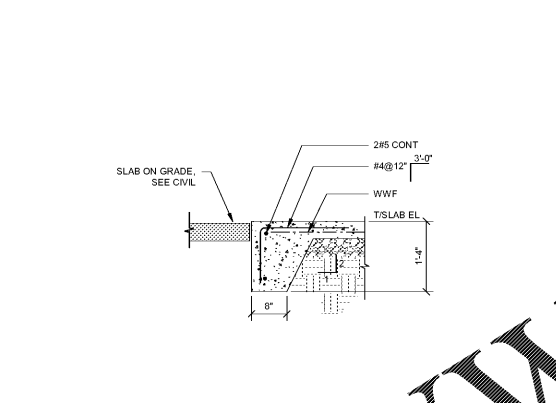
4 TYPICAL GRADE SUPPORTED SLAB JOINTS  
S3-01 3/4" = 1'-0"



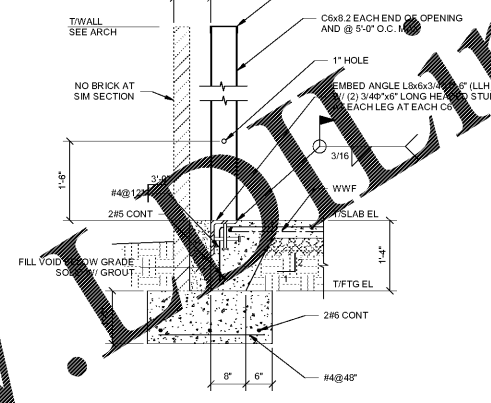
19 FOUNDATION SECTION AT RESTROOM WALLS  
S3-01 3/4" = 1'-0"



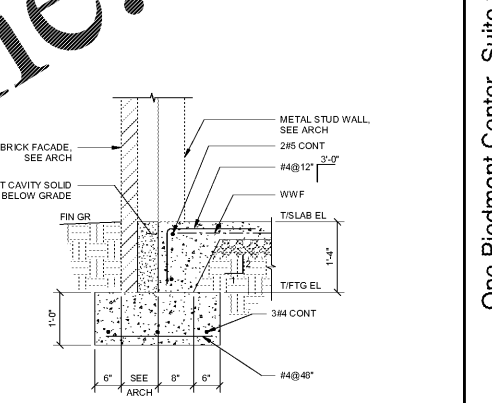
15 TYPICAL TURNDOWN SLAB AT STOREFRONT  
S3-01 3/4" = 1'-0"



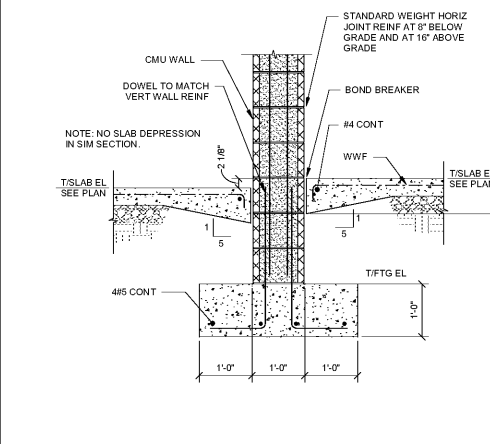
11 TYPICAL TURNDOWN SLAB AT DOOR  
S3-01 3/4" = 1'-0"



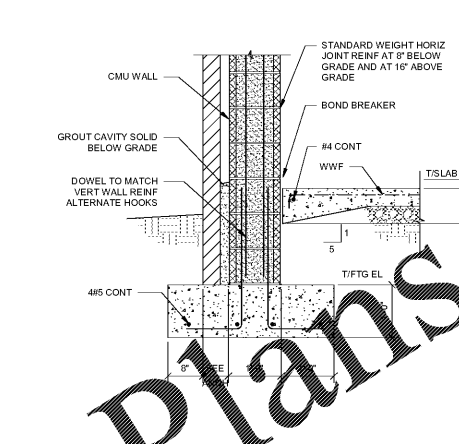
7 TYPICAL TURN DOWN SLAB AT BANDED WINDOWS  
S3-01 3/4" = 1'-0"



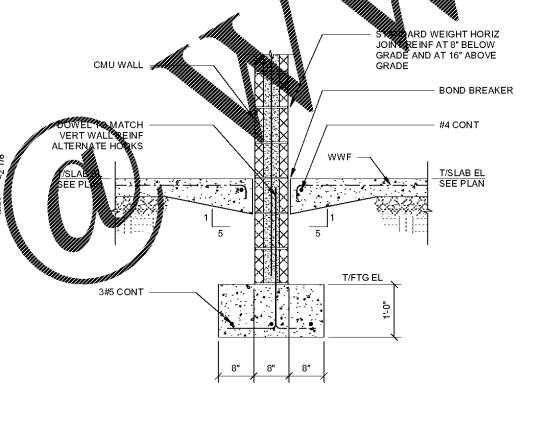
3 TYPICAL TURNDOWN SLAB ON FOOTING  
S3-01 3/4" = 1'-0"



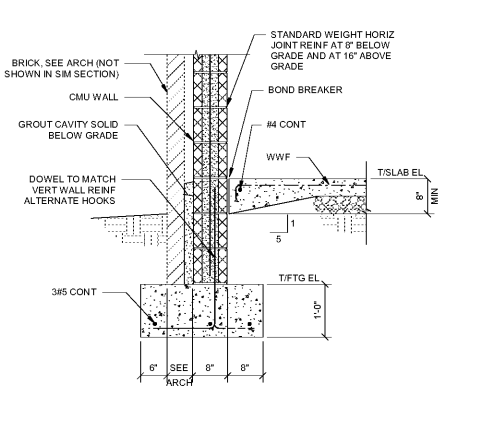
18 TYPICAL INTERIOR 12" CMU WALL FOOTING  
S3-01 3/4" = 1'-0"



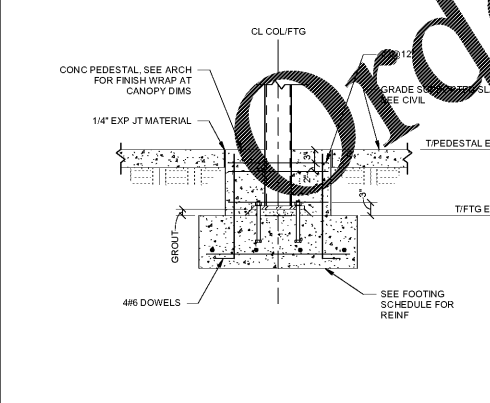
14 TYPICAL EXTERIOR 12" CMU WALL FOOTING  
S3-01 3/4" = 1'-0"



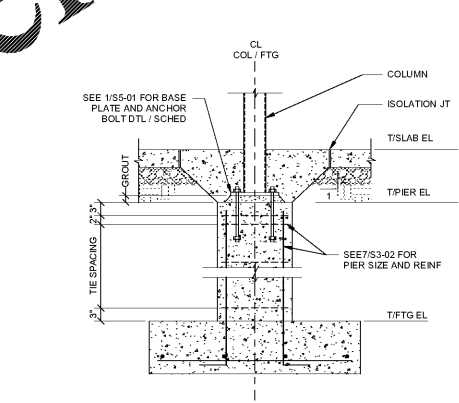
10 TYPICAL INTERIOR 8" CMU WALL FOOTING  
S3-01 3/4" = 1'-0"



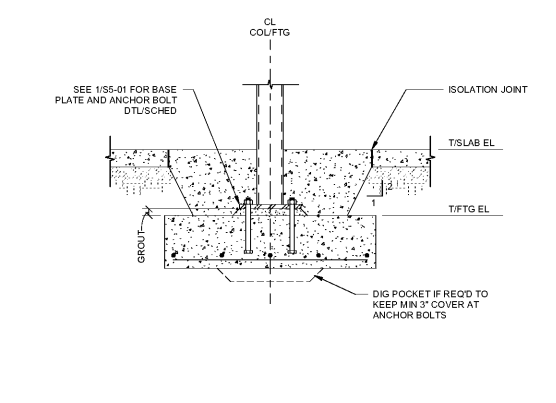
6 TYPICAL EXTERIOR 8" CMU WALL FOOTING  
S3-01 3/4" = 1'-0"



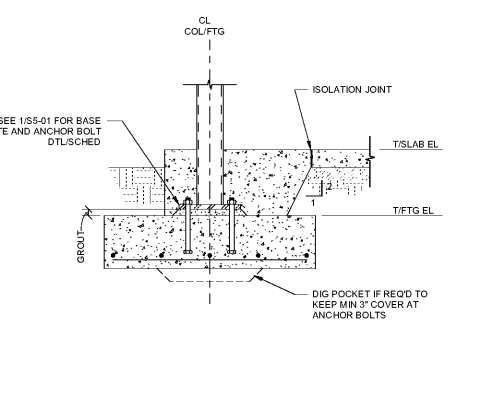
17 TYPICAL STEEL CANOPY COLUMN FOOTING  
S3-01 3/4" = 1'-0"



13 TYPICAL STEEL COLUMN FOOTING WITH CONCRETE PIER  
S3-01 3/4" = 1'-0"



9 TYPICAL INTERIOR STEEL COLUMN FOOTING  
S3-01 3/4" = 1'-0"



5 TYPICAL EXTERIOR STEEL COLUMN FOOTING  
S3-01 3/4" = 1'-0"

FOOTING SCHEDULE			
MARK	SIZE (W x L x T)	REIN	REMARKS
F3.0	3'-0" x 3'-0" x 12"	(3) #4 EACH WAY	BOTTOM
F3.0'	3'-0" x 3'-0" x 12"	(3) #4 EACH WAY	TOP & BOTTOM
F3.25	3'-3" x 3'-3" x 12"	(4) #4 EACH WAY	BOTTOM
F3.5	3'-6" x 3'-6" x 12"	(4) #4 EACH WAY	BOTTOM
F3.75	3'-9" x 3'-9" x 12"	(4) #4 EACH WAY	BOTTOM
F4.0	4'-0" x 4'-0" x 12"	(4) #4 EACH WAY	BOTTOM
F4.0'	4'-0" x 4'-0" x 12"	(4) #4 EACH WAY	TOP & BOTTOM
F4.25	4'-3" x 4'-3" x 12"	(5) #4 EACH WAY	BOTTOM
F4.5	4'-6" x 4'-6" x 12"	(4) #5 EACH WAY	BOTTOM
F4.5'	4'-6" x 4'-6" x 12"	(4) #5 EACH WAY	TOP & BOTTOM
F4.75	4'-9" x 4'-9" x 12"	(5) #5 EACH WAY	BOTTOM
F5.0	5'-0" x 5'-0" x 12"	(5) #5 EACH WAY	BOTTOM
F5.0'	5'-0" x 5'-0" x 12"	(5) #5 EACH WAY	TOP & BOTTOM
F5.25	5'-3" x 5'-3" x 13"	(6) #5 EACH WAY	BOTTOM
F5.5	5'-6" x 5'-6" x 13"	(6) #5 EACH WAY	BOTTOM
F5.5'	5'-6" x 5'-6" x 13"	(6) #5 EACH WAY	TOP & BOTTOM
F5.75	5'-9" x 5'-9" x 14"	(7) #5 EACH WAY	BOTTOM
F6.0	6'-0" x 6'-0" x 14"	(7) #5 EACH WAY	TOP & BOTTOM
F6.5	6'-6" x 6'-6" x 16"	(8) #5 EACH WAY	TOP & BOTTOM
F7.25	7'-3" x 7'-3" x 18"	(7) #6 EACH WAY	BOTTOM
F7.25'	7'-3" x 7'-3" x 18"	(7) #6 EACH WAY	TOP & BOTTOM
F7.5	7'-9" x 7'-9" x 19"	(6) #7 EACH WAY	BOTTOM
F7.75	7'-9" x 7'-9" x 19"	(6) #7 EACH WAY	TOP & BOTTOM
F8.0	8'-0" x 8'-0" x 19"	(7) #7 EACH WAY	TOP & BOTTOM
F8.25	8'-3" x 8'-3" x 20"	(7) #7 EACH WAY	BOTTOM
F8.5	8'-6" x 8'-6" x 20"	(7) #7 EACH WAY	TOP & BOTTOM
F9.0	9'-0" x 9'-0" x 21"	(8) #7 EACH WAY	TOP & BOTTOM
F10.0	10'-0" x 10'-0" x 24"	(10) #8 EACH WAY	TOP & BOTTOM
F12.0	12'-0" x 12'-0" x 28"	(10) #8 EACH WAY	TOP & BOTTOM
F12.75	12'-9" x 12'-9" x 30"	(12) #8 EACH WAY	TOP & BOTTOM

1 FOOTING SCHEDULE  
S3-01 3/4" = 1'-0"

One Piedmont Center, Suite 303 3565 Piedmont Road Atlanta, Georgia 30305  
 Smallwood, Reynolds, Stewart & Associates, Inc. Architects  
 FOUNDATION DETAILS  
 J.H. HOUSE ELEMENTARY SCHOOL  
 3100 Zingira Road NE, Conyers, GA 30012  
 DATE: 10.01.2019  
 JOB NO: 218036.00  
 SHEET NO: S3-01  
 ISSUED FOR CONSTRUCTION

REV. NO.	DATE	REMARKS
06.16.19		QUOTE CHECK SET
10.01.19		ISSUED FOR PERMIT/ISSUE PAUL

REVISIONS / PRINTED	46	81
INSTRUCTIONAL UNITS		
REGULAR CLASSROOMS		
PLEAS-AREAS		
MUSIC		
PHYSICAL EDUCATION		
ART CENTER		
TOTAL		
REGULAR AREA	71,153 SF	
LEVEL 02	32,238 SF	
TOTAL	103,391 SF	
COVERED AREAS (IE CANOPIES)	5,188 SF	
COVERED AREAS (-) BY 2	-2,258 SF	
TOTAL		