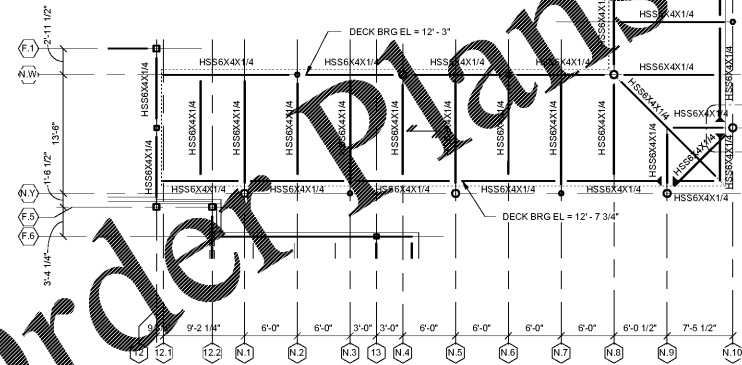
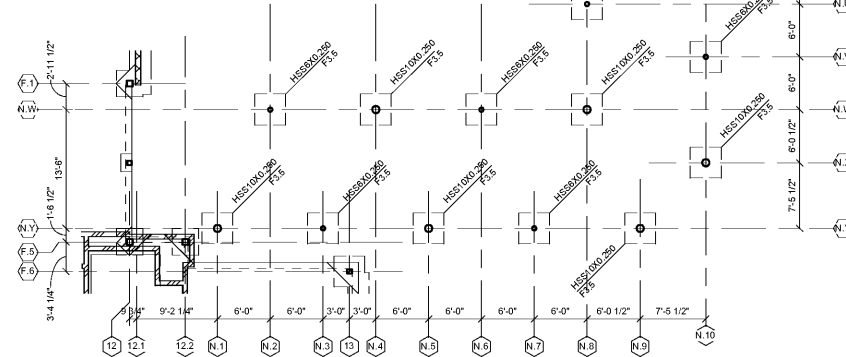


Order Plans @ WWW.LDILine.com



2 CANOPY FRAMING PLAN
S1-05
1/8" = 1'-0"

- NOTES:
- SEE S0-01 FOR STRUCTURAL GENERAL NOTES.
 - SEE ARCH FOR ADDITIONAL INFORMATION AND DIMENSIONS.
 - INDICATES DIRECTIONAL SPAN OF 1 1/2" 22 GA GALV ROOF DECK. SEE 4S5-03.



1 CANOPY FOUNDATION PLAN
S1-06
1/8" = 1'-0"

- NOTES:
- SEE S0-01 FOR STRUCTURAL GENERAL NOTES.
 - SEE ARCH FOR ADDITIONAL INFORMATION AND DIMENSIONS.
 - Fx INDICATES COLUMN FOOTING. SEE 1/S3-01. T/FTG = -1'-4" UNO, BASED ON T/SLAB REFERENCE ELEVATION = 0'-0".

Smallwood, Reynolds, Stewart & Associates, Inc. Architects

CANOPY FOUNDATION AND FRAMING PLAN

J.H. HOUSE ELEMENTARY SCHOOL
3100 Zingira Road NE, Conyers, GA 30012

DATE	10.01.2019
JOB NO.	218036.00
SHEET NO.	S1-05



DAVID L. REYNOLDS
REGISTERED PROFESSIONAL ENGINEER
STATE OF GEORGIA
NO. 12547

One Piedmont Center, Suite 303 3565 Piedmont Road Atlanta, Georgia 30305

REV. NO.	DATE	REMARKS
1	10.01.19	ISSUED FOR PERMIT/ISSUE PLAN
2	10.01.19	ISSUED FOR PERMIT/ISSUE PLAN

INSTRUCTIONAL UNIT	BLU AREA	LEVEL	COVERED AREA (I.E. CANOPIES)	TOTAL
REGULAR CLASSROOMS	71,153 SF			
REGULAR FLEX AREAS	32,238 SF			
MUSIC	106,531 SF			
PHYSICAL EDUCATION				
ART CENTER				
ART				
TOTAL	209,922 SF		5,198 SF	215,120 SF

ISSUED FOR CONSTRUCTION