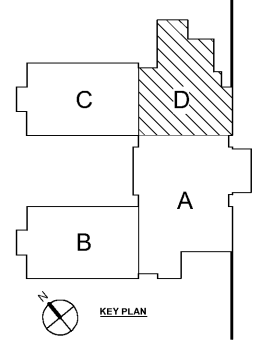


1 ROOF FRAMING PLAN - PART D
1/8" = 1'-0"

- NOTES:
- SEE S0-01 FOR STRUCTURAL GENERAL NOTES.
 - SEE ARCH FOR ADDITIONAL INFORMATION AND DIMENSIONS.
 - DECK BEARING ELEVATION RELATIVE TO LEVEL 01 FLOOR REFERENCE ELEVATION = 0'-0" UNO.
 - INDICATES DIRECTIONAL SPAN OF 1 1/2" Z GALV ACUSTIC ROOF DECK. SEE 455-03.
 - INDICATES BRACED FRAME.
 - INDICATES CONT. HORIZ BRIDGING AT TOP AND BOTTOM CHORD OF JOISTS WITH ADDITIONAL X-TYPE BRIDGING IN THE FIRST PANEL AND EVERY SIXTH PANEL. BRIDGING SHALL BE WELDED TO JOISTS, FRAMING, AND AT CROSSOVER POINTS. USE L1 1/2" X 1 1/2" X 18".
 - M INDICATES AN ADDITIONAL "X" TYPE RIGID BRIDGING FOR ONE BAY ONLY WELDED AT CROSSOVER POINTS.
 - CONTRACTOR TO COORDINATE LOCATION AND WEIGHTS OF ALL RTU UNITS PRIOR TO INSTALLATION. CONTACT ENGINEER W/ ANY DISCREPANCIES.
 - INDICATES CONT. VERT "X" TYPE RIGID BRIDGING BOLTED TO JOISTS, FRAMING, AND AT CROSSOVER POINTS. USE L1 3/4" X 1 3/4" X 18" AT "LH" SERIES JOISTS. BRIDGING SHOWN IS THE MINIMUM REQUIRED. CONTRACTOR SHALL BE RESPONSIBLE FOR ANY ADDITIONAL BRIDGING REQUIRED FOR ERECTION.
 - SEE S55-03 FOR TYPICAL SUPPORT FRAMING AT ROOF OPENINGS.
 - SEE DETAIL 1255-03 FOR JOIST REINFORCEMENT AT CONCENTRATED LOAD.
 - SEE 2 AND 654-01 FOR LOOSE LINTEL SCHEDULE AT BRICK OPENINGS NOT SHOWN ON DRAWINGS.



Order Plans @ www.LDILine.com

Smallwood, Reynolds, Stewart & Associates, Inc. Architects

One Piedmont Center, Suite 303 3565 Piedmont Road Atlanta, Georgia 30305

PROJECT SUMMARY

REGULAR CLASSROOMS
MUSIC
PHYSICAL EDUCATION
ART CENTER

PROJECT NO. 101.2019

JOB NO. 218036.00

SHEET NO. S1-03D

REVISIONS / PRINTED

REV. NO.	DATE	REMARKS
1	10.10.19	ISSUED FOR PERMIT/ISSUE PAUL
2	10.10.19	ISSUED FOR PERMIT/ISSUE PAUL
3	10.10.19	ISSUED FOR PERMIT/ISSUE PAUL
4	10.10.19	ISSUED FOR PERMIT/ISSUE PAUL
5	10.10.19	ISSUED FOR PERMIT/ISSUE PAUL

INSTRUCTIONAL UNITS

UNITS	REGULAR CLASSROOMS	MUSIC	PHYSICAL EDUCATION	ART CENTER	TOTAL
45	71,155 SF	3,238 SF	108,331 SF	5,188 SF	188,912 SF
46	108,331 SF	5,188 SF	71,155 SF	3,238 SF	188,912 SF
81	180,486 SF	8,426 SF	179,516 SF	8,426 SF	377,454 SF

COVERED AREAS (IE CANOPIES)

COVERED AREAS (IE CANOPIES)	TOTAL
COVERED AREAS (IE CANOPIES)	188,912 SF
TOTAL	377,454 SF

RCPS

STATE OF GEORGIA

REGISTERED PROFESSIONAL ARCHITECT

DAVID L. STEWART
NO. 10120
EXPIRES 12/31/2021

ROOF FRAMING PLAN - PART D

J.H. HOUSE ELEMENTARY SCHOOL
3100 Zingira Road NE, Conyers, GA 30012

DATE: 10.01.2019

ISSUED FOR CONSTRUCTION