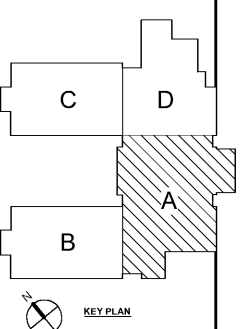


1 ROOF FRAMING PLAN - PART A
1/8" = 1'-0"

- NOTES:
- SEE 50-01 FOR STRUCTURAL GENERAL NOTES.
 - SEE ARCH FOR ADDITIONAL INFORMATION AND DIMENSIONS.
 - DECK BEARING ELEVATION RELATIVE TO LEVEL 01 FLOOR REFERENCE ELEVATION, UNO.
 - INDICATES DIRECTIONAL SPAN OF 1 1/2" 22 GA GALV ACOUSTIC ROOF DECK, SEE 485-03.
 - INDICATES DIRECTIONAL SPAN OF 3" 22 GA GALV ACOUSTIC ROOF DECK, SEE 485-03.
 - INDICATES BRACED FRAME, SEE SHEET 55-06.
 - INDICATES CONT. HORIZ BRIDGING AT TOP AND BOTTOM CHORD OF JOISTS WITH ADDITIONAL X-TYPE BRIDGING IN THE FIRST PANEL AND EVERY SIXTH PANEL BRIDGING SHALL BE WELDED TO JOISTS, FRAMING, AND AT CROSSOVER POINTS. USE L1 1/2" x 1 1/2" x 18".
 - M INDICATES AN ADDITIONAL X-TYPE RIGID BRIDGING FOR ONE BAY ONLY WELDED AT CROSSOVER POINTS. CONTRACTOR TO COORDINATE LOCATION AND WEIGHTS OF ALL RTU UNITS PRIOR TO INSTALLATION. CONTACT ENGINEER W/ ANY DISCREPANCIES.
 - PROVIDE ADDITIONAL JOIST AT BASKETBALL GOAL AND ATTACHMENT POINTS. COORDINATE LOCATION OF BASKETBALL GOAL W/ ARCH.
 - INDICATES CONT. VERT X-TYPE RIGID BRIDGING BOLTED TO JOISTS, FRAMING, AND AT CROSSOVER POINTS. USE L1 3/4" x 1 3/4" x 18" AT LHF-SERIES JOISTS. BRIDGING SHOWN IS THE MINIMUM REQUIRED. CONTRACTOR SHALL BE RESPONSIBLE FOR ANY ADDITIONAL BRIDGING REQUIRED FOR ERECTION.
 - SEE 55-03 FOR TYPICAL SUPPORT FRAMING AT ROOF OPENINGS.
 - SEE DETAIL 12/55-05 FOR JOIST REINFORCEMENT AT CONCENTRATED LOAD.
 - SEE 2 AND 6/54-01 FOR LOOSE LINTEL SCHEDULE AT BRICK OPENINGS NOT SHOWN ON DRAWINGS.
 - INDICATES EXACT LOCATION OF HOIST BEAM TO BE COORD. W/ ELEV. MFR.
 - S.P. INDICATES BEAM SPLICE LOCATION SEE DETAIL 20/55-01.



Smallwood, Reynolds, Stewart & Associates, Inc. Architects

One Piedmont Center, Suite 303 3565 Piedmont Road Atlanta, Georgia 30305

REVISIONS / PRINTED

REV. NO.	DATE	REMARKS
1	10.01.2019	ISSUED FOR PERMIT/ISSUE PLAN

INSTRUCTIONAL UNITS

UNITS	45	51
REGULAR CLASSROOMS	71,153 SF	
REGULAR FLEX-AREAS	32,238 SF	
MUSIC	106,531 SF	
PHYSICAL EDUCATION		
ART CENTER		
ART	5,188 SF	
TOTAL	215,050 SF	

PROJECT SUMMARY

REGULAR CLASSROOMS 71,153 SF
 REGULAR FLEX-AREAS 32,238 SF
 MUSIC 106,531 SF
 PHYSICAL EDUCATION
 ART CENTER
 ART 5,188 SF
 TOTAL 215,050 SF

RCPS

STATE OF GEORGIA
 PROFESSIONAL ENGINEER
 LICENSE NO. 10000

DATE 10.01.2019

JOB NO. 218036.00

SHEET NO. S1-03A

ISSUED FOR CONSTRUCTION