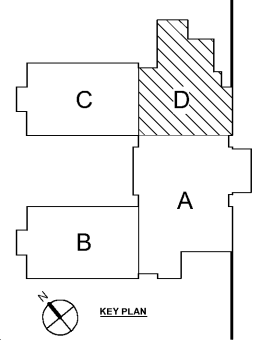


1 LEVEL 02 FLOOR AND ROOF FRAMING PLAN - PART D
1/8" = 1'-0"

- NOTES:
- SEE S0-01 FOR STRUCTURAL GENERAL NOTES.
 - SEE ARCH FOR ADDITIONAL INFORMATION AND DIMENSIONS.
 - DECK BEARING ELEVATION NOTED ON PLANS RELATIVE TO LEVEL 01 FLOOR REFERENCE ELEVATION UNO.
 - INDICATES DIRECTIONAL SPAN OF 2" 18 GA COMPOSITE FLOOR DECK W/ 3 1/4" LIGHTWEIGHT CONCRETE (5 1/4" TOTAL DEPTH) W/ WWF 6x6 W2.9xW2.9. SEE 4S5-02.
 - INDICATES DIRECTIONAL SPAN OF 1 1/2" 22 GA GALV TYP B METAL ROOF DECK. SEE 4S5-03.
 - INDICATES BRACED FRAME.
 - (X) INDICATES NUMBER OF 3/4" Ø HEADED STUDS EQUALLY SPACED. SEE 19S5-02.
 - INDICATES MOMENT CONNECTION.
 - Vx INDICATES MAXIMUM SHEAR REACTION OF 10 KIPS. UNO.
 - INDICATES CONT. HORIZ BRIDGING AT TOP AND BOTTOM CHORD OF JOISTS WITH ADDITIONAL X-TYPE BRIDGING IN THE FIRST PANEL AND EVERY SIXTH PANEL BRIDGING SHALL BE WELDED TO JOISTS, FRAMING, AND AT CROSSOVER POINTS. USE L1 1/2" x 1 1/2" x 1/8".
 - CONTRACTOR TO COORDINATE LOCATION AND WEIGHTS OF ALL RTU UNITS PRIOR TO INSTALLATION. CONTACT ENGINEER W/ ANY DISCREPANCIES.
 - SEE S55-03 FOR TYPICAL SUPPORT FRAMING AT ROOF OPENINGS.
 - SEE DETAIL 12S5-03 FOR JOIST REINFORCEMENT AT CONCENTRATED LOAD.
 - SEE 2 AND 6S4-01 FOR LOOSE LINTEL SCHEDULE AT BRICK OPENINGS NOT SHOWN ON DRAWINGS.



Order Plans @ www.LDILine.com

Smallwood, Reynolds, Stewart & Associates, Inc. Architects

One Piedmont Center, Suite 303 3565 Piedmont Road Atlanta, Georgia 30305

PROJECT SUMMARY

PROJECT: J.H. HOUSE ELEMENTARY SCHOOL
 GRADE: PRE-K THROUGH 5TH
 P.T.E.: 800
 G.O.D.#: TO BE ASSIGNED

REVISIONS / PRINTED

REV. NO.	DATE	REMARKS
1	10.10.19	ISSUED FOR PERMIT/ISSUE PLAN
2	10.10.19	ISSUED FOR PERMIT/ISSUE PLAN

INSTRUCTIONAL UNITS

UNIT	AREA (SF)
REGULAR CLASSROOMS	71,152 SF
MUSIC	3,238 SF
PHYSICAL EDUCATION	106,331 SF
ART CENTER	5,188 SF
ART	2,265 SF
TOTAL	188,174 SF

COVERED AREAS (I.E. CANOPIES)

AREA	AREA (SF)
COVERED AREAS (I.E. CANOPIES)	5,188 SF
COVERED AREAS (I.E. BY 2)	2,265 SF
TOTAL	7,453 SF

RCPS

REYNOLDS COUNTY PUBLIC SCHOOLS

REGISTERED PROFESSIONAL ARCHITECT

SMALLWOOD REYNOLDS STEWART & ASSOCIATES, INC.

REGISTERED IN THE STATE OF GEORGIA

MEMBER OF THE NATIONAL ARCHITECTURAL ASSOCIATION

LEVEL 02 FRAMING PLAN - PART D

J.H. HOUSE ELEMENTARY SCHOOL

3100 Zingira Road NE, Conyers, GA 30012

DATE: **10.01.2019**

JOB NO: **218036.00**

SHEET NO: **S01-2D**

ISSUED FOR CONSTRUCTION