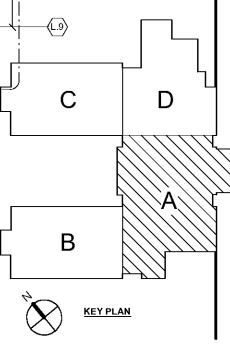


Order Plans @ www.LDOnline.com

1
61-02A
LEVEL 02 FLOOR AND ROOF FRAMING PLAN - PART A
1/8" = 1'-0"

NOTES:
 1. SEE 50-01 FOR STRUCTURAL GENERAL NOTES.
 2. SEE ARCH FOR ADDITIONAL INFORMATION AND DIMENSIONS.
 3. DECK BEARING ELEVATION NOTED ON PLANS RELATIVE TO LEVEL 01 FLOOR REFERENCE ELEVATION, UNO.
 4. ——— INDICATES DIRECTIONAL SPAN OF 2" 18 GA COMPOSITE FLOOR DECK W/ 3" 1/4" LIGHTWEIGHT CONCRETE (5 1/4" TOTAL DEPTH) W/ WWF 6x6 W2.9xW2.9. SEE 455-02.
 5. ——— INDICATES DIRECTIONAL SPAN OF 1 1/2" 22 GA GALV TYP B METAL ROOF DECK. SEE 445-03.
 6. - - - - - INDICATES BRACED FRAME. SEE SHEET 55-06.
 7. (x) INDICATES NUMBER OF 3/4" Ø HEADED STUDS EQUALLY SPACED. SEE 19/55-02.
 8. ——— INDICATES MOMENT CONNECTION.
 9. Vx INDICATES MAXIMUM SHEAR REACTION OF 10 KIPS. UNO.
 10. ——— INDICATES CONT. HORIZ. BRIDGING AT TOP AND BOTTOM CHORD OF JOISTS WITH ADDITIONAL X-TYPE BRIDGING IN THE FIRST PANEL AND EVERY SIXTH PANEL. BRIDGING SHALL BE WELDED TO JOISTS, FRAMING, AND AT CROSSOVERS POINTS. USE L1 1/2x1 1/2x11/8".
 11. SEE 855-03 FOR TYPICAL SUPPORT FRAMING AT ROOF OPENINGS.
 12. SEE DETAIL 12/55-03 FOR JOIST REINFORCEMENT AT CONCENTRATED LOAD.
 13. SEE 2 AND 654-01 FOR LOOSE LINTEL SCHEDULE AT BRICK OPENINGS NOT SHOWN ON DRAWINGS.



Smallwood, Reynolds, Stewart & Associates, Inc. Architects

One Piedmont Center, Suite 303 3565 Piedmont Road Atlanta, Georgia 30305

LEVEL 02 FRAMING PLAN - PART A

J.H. HOUSE ELEMENTARY SCHOOL
 3100 Zingira Road NE, Conyers, GA 30012

DATE: 10.01.2019
 JOB NO: 218036.00
 SHEET NO: S1-02A

REV. NO.	DATE	REMARKS
1	10.01.19	ISSUED FOR PERMIT/ISSUE PAUL
2	10.01.19	ISSUED FOR PERMIT/ISSUE PAUL

REVISIONS / PRINTED	DATE	REMARKS
46	10.01.19	ISSUED FOR PERMIT/ISSUE PAUL
47	10.01.19	ISSUED FOR PERMIT/ISSUE PAUL
48	10.01.19	ISSUED FOR PERMIT/ISSUE PAUL
49	10.01.19	ISSUED FOR PERMIT/ISSUE PAUL
50	10.01.19	ISSUED FOR PERMIT/ISSUE PAUL
51	10.01.19	ISSUED FOR PERMIT/ISSUE PAUL

INSTRUCTIONAL UNITS	REGULAR CLASSROOMS	REGULAR FLEX AREAS	MUSIC	PHYSICAL EDUCATION	ART CENTER	ART	TOTAL
46	71,153 SF	32,239 SF	106,631 SF	5,198 SF	5,198 SF	2,255 SF	2,255 SF
47							
48							
49							
50							
51							

RCPS

STEWART & ASSOCIATES, INC.