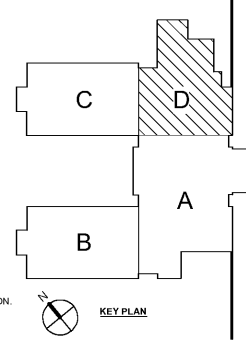


Order Plans @ www.LDILine.com

1 S1-01D LEVEL 01 FOUNDATION PLAN - PART D
1/8" = 1'-0"

- NOTES:
- SEE S0-01 FOR STRUCTURAL GENERAL NOTES.
 - SEE ARCH FOR ADDITIONAL INFORMATION AND DIMENSIONS.
 - Fx INDICATES COLUMN FOOTING. SEE 193-01. T/FTG = -1'-4" UNO, BASED ON T/SLAB REFERENCE ELEVATION = 0'-0".
 - BPx INDICATES COLUMN BASE PLATE. SEE 135-01.
 - Px INDICATES CONCRETE PESTAL PIER. SEE 135-01.
 - INDICATES STEP IN FOOTING. SEE 193-02.
 - PROVIDE 4" SLAB ON GRADE REINFORCED WITH WWF 6x6 W2.9W2.9 ON VAPOR BARRIER AND 4" GRANULAR BASE.
 - C.J. INDICATES SLAB CONTROL JOINT. SEE 453-01 AND GENERAL NOTES FOR ADDITIONAL INFORMATION.
 - PROVIDE ISOLATION JOINT AT COLUMN. SEE 125-01.
 - PROVIDE REINFORCEMENT AT RE-ENTRANT CORNERS. SEE 853-01.
 - INDICATES BRACED FRAME.
 - INDICATES SLAB DEPRESSION. SEE 163-01. SEE ARCH EDGE OF SLAB PLAN FOR DIMENSIONS AND DEPTH OF DEPRESSION.
 - INDICATES 8" MASONRY WALL REINFORCED W/ #5@32" O.C. SEE DETAIL 1.5.A9S4-01.
 - INDICATES 8" MASONRY WALL REINFORCED W/ #4@48" O.C. SEE DETAIL 1.5.A9S4-01.
 - INDICATES 12" MASONRY WALL REINFORCED W/ #6@24" O.C. EA FACE. UNO. SEE DETAIL 1.5.A9S4-01.
 - INDICATES 12" MASONRY WALL REINFORCED W/ #6@16" O.C. EA FACE. SEE DETAIL 1.5.A9S4-01.
 - CONTRACTOR SHALL BE RESPONSIBLE FOR COORDINATION OF ALL UTILITY AND PLUMBING LINES. SEE 2053-02.
 - PROVIDE THICKENED SLAB UNDER ALL INTERIOR PARTIAL HEIGHT MASONRY PARTITION WALLS. COORDINATE LOCATION OF WALLS WITH ARCH PRIOR TO CONSTRUCTION. SEE 1953-01.
 - F.D. INDICATES FLOOR DRAIN. SLOPE SLAB TO DRAIN.



Smallwood, Reynolds, Stewart & Associates, Inc. Architects

One Piedmont Center, Suite 303 3565 Piedmont Road Atlanta, Georgia 30305

LEVEL 01 FOUNDATION PLAN - PART D

J.H. HOUSE ELEMENTARY SCHOOL
3100 Zingira Road NE, Conyers, GA 30012

DATE: **10.01.2019**

JOB NO: **218036.00**

SHEET NO: **S1-01D**

REV. NO.	DATE	REMARKS
1	10.01.19	ISSUED FOR PERMIT/ISSUE PAUL
2	10.01.19	ISSUED FOR PERMIT/ISSUE PAUL

INSTRUCTIONAL UNITS		REVISIONS / PRINTED
REGULAR CLASSROOMS	71,193 SF	46
MUSIC	3,238 SF	4
PHYSICAL EDUCATION	106,831 SF	1
ART CENTER	5,188 SF	1
ART	2,285 SF	81
TOTAL	188,735 SF	

ISSUED FOR CONSTRUCTION