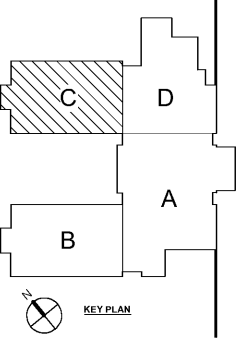


1 LEVEL 01 FOUNDATION PLAN - PART C
1/8" = 1'-0"

- NOTES:
- SEE S0-01 FOR STRUCTURAL GENERAL NOTES.
 - SEE ARCH FOR ADDITIONAL INFORMATION AND DIMENSIONS.
 - FK INDICATES COLUMN FOOTING. SEE 11S3-01. T/FTG = 1'-4" UNO, BASED ON TISLAB REFERENCE ELEVATION = 0'-0".
 - BPX INDICATES COLUMN BASE PLATE. SEE 11S3-01.
 - PA INDICATES CONCRETE PEDestal/PIER. SEE 11S3-01.
 - INDICATES STEP IN FOOTING. SEE 11S3-02.
 - PROVIDE 4" SLAB ON GRADE REINFORCED WITH WWF 6x6 W2.9xW2.5 ON VAPOR BARRIER AND 4" GRANULAR BASE. SEE 11S3-01.
 - C/J INDICATES SLAB CONTROL JOINT. SEE 43S-01 AND GENERAL NOTES FOR ADDITIONAL INFORMATION.
 - PROVIDE ISOLATION JOINT AT COLUMN. SEE 12S3-01.
 - PROVIDE REINFORCEMENT AT RE-ENTRANT CORNERS. SEE 8S3-01.
 - INDICATES EXTENTS OF BRACED FRAME. SEE SHEET 11S3-08.
 - INDICATES SLAB DEPRESSION. SEE DETAIL 11S3-01. SEE ARCH EDGE OF SLAB PLAN FOR DIMENSIONS AND DEPTH OF DEPRESSION.
 - INDICATES 8" MASONRY WALL REINFORCED W/ #4@16" O.C. SEE DETAIL 11S4-01.
 - INDICATES 12" MASONRY WALL REINFORCED W/ #6@24" O.C. EA FACE. UNO. SEE DETAIL 11S4-01.
 - FOR MASONRY WALL REINFORCEMENT. SEE 58S3-01.
 - CONTRACTOR SHALL BE RESPONSIBLE FOR COORDINATION OF ALL UTILITY AND PLUMBING LINES. SEE 20S3-02.
 - PROVIDE THICKENED SLAB UNDER ALL INTERIOR PARTIAL HEIGHT MASONRY PARTITION WALLS. COORDINATE LOCATION OF WALLS WITH ARCH PRIOR TO CONSTRUCTION. SEE 11S3-01.
 - F.D. INDICATES FLOOR DRAIN. SLOPE SLAB TO DRAIN.



Order Plans @ WWW.WLDIPLINE.COM

Smallwood, Reynolds, Stewart & Associates, Inc. Architects

One Piedmont Center, Suite 303 3565 Piedmont Road Atlanta, Georgia 30305

REVISIONS / PRINTED

REV. NO.	DATE	REMARKS
1	10.01.2019	ISSUED FOR PERMIT/ISSUE FOR CONSTRUCTION

INSTRUCTIONAL UNIT

UNIT	AREA
REGULAR CLASSROOMS	71,153 SF
REGULAR CLASSROOMS	32,238 SF
MUSIC	108,331 SF
PHYSICAL EDUCATION	5,198 SF
ART CENTER	5,198 SF
TOTAL	218,118 SF

PROJECT SUMMARY

REGULAR CLASSROOMS
GRADE: PRE-K THROUGH 5TH
G.O.D.E.# TO BE ASSIGNED

RCPS

J.H. HOUSE ELEMENTARY SCHOOL
3100 Zingira Road NE, Conyers, GA 30012

DATE: 10.01.2019
JOB NO: 218036.00
SHEET NO: S1-01C

ISSUED FOR CONSTRUCTION