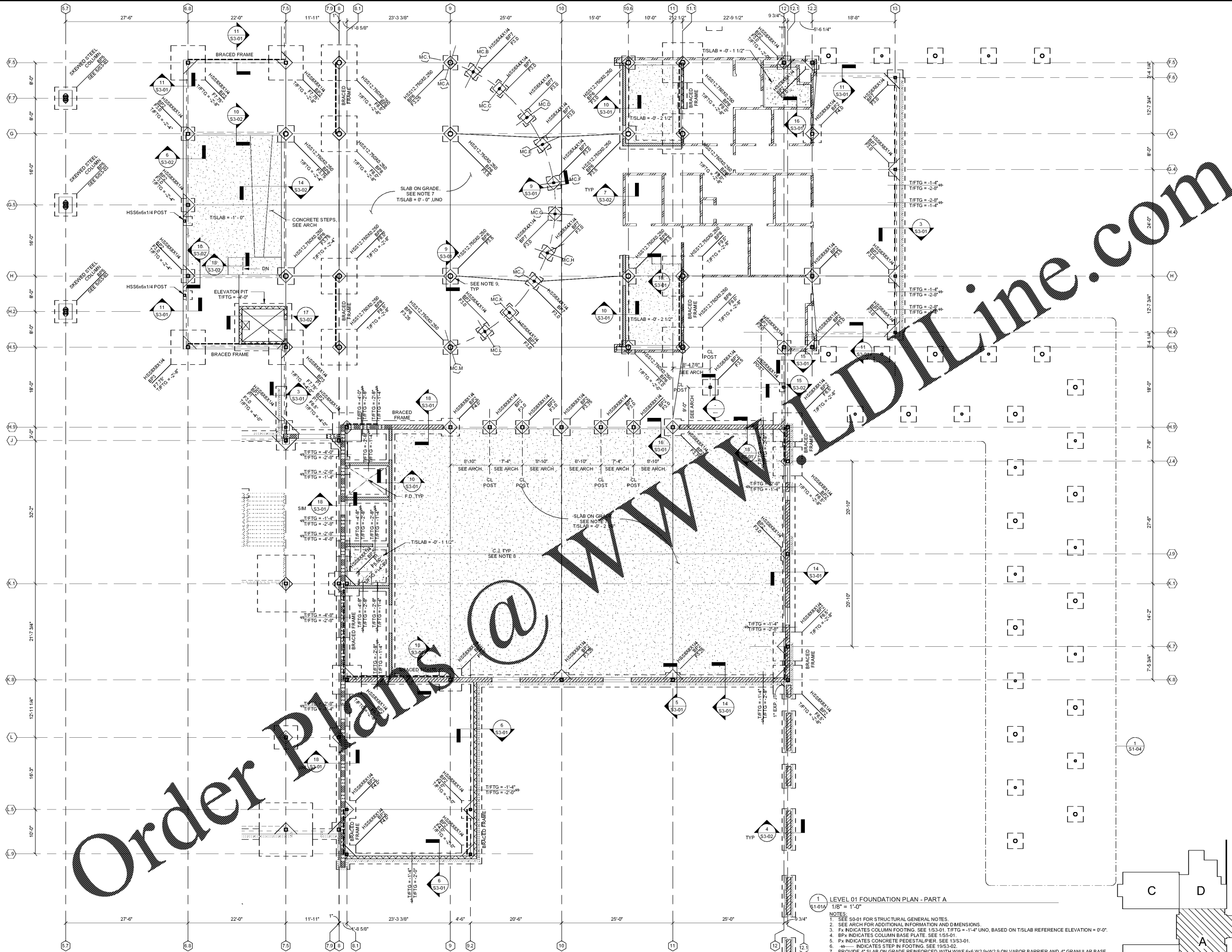


Order Plans @ www.dline.com



- 1 LEVEL 01 FOUNDATION PLAN - PART A
1/8" = 1'-0"
- NOTES:
- SEE S3-01 FOR STRUCTURAL GENERAL NOTES.
 - SEE ARCH FOR ADDITIONAL INFORMATION AND DIMENSIONS.
 - Fx INDICATES COLUMN FOOTING. SEE 1S3-01. T/FTG = 1'-4" UNO, BASED ON T/SLAB REFERENCE ELEVATION = 0'-0".
 - SPx INDICATES COLUMN BASE PLATE. SEE 1S3-01.
 - Px INDICATES CONCRETE PEDESTAL PIER. SEE 1S3-01.
 - 4x INDICATES STEP IN FOOTING. SEE 1S3-02.
 - PROVIDE 4" SLAB ON GRADE REINFORCED WITH W/WF 6x6 W/2.9x2.9 ON VAPOR BARRIER AND 4" GRANULAR BASE.
 - C.J. INDICATES SLAB CONTROL JOINT. SEE 4S3-01 AND GENERAL NOTES FOR ADDITIONAL INFORMATION.
 - PROVIDE ISOLATION JOINT AT COLUMN. SEE 1S3-01.
 - PROVIDE REINFORCEMENT AT RE-ENTRANT CORNERS. SEE 8/S3-01.
 - INDICATES BRACED FRAME. SEE SHEET S3-06.
 - ES3-01 INDICATES SLAB DEPRESSION. SEE 1S3-01. SEE ARCH EDGE OF SLAB PLAN FOR DIMENSIONS AND DEPTH OF DEPRESSION.
 - INDICATES 9" MASONRY WALL REINFORCED W/ #6@32" O.C. SEE DETAIL 1.5.A9/S4-01.
 - INDICATES 8" MASONRY WALL REINFORCED W/ #4@30" O.C. SEE DETAIL 1.5.A9/S4-01.
 - INDICATES 12" MASONRY WALL REINFORCED W/ #6@24" O.C. EA FACE. UNO. SEE DETAIL 1.5.A9/S4-01.
 - INDICATES 12" MASONRY WALL REINFORCED W/ #6@16" O.C. EA FACE. SEE DETAIL 1.5.A9/S4-01.
 - INDICATES LOAD BEARING CMU WALL.
 - CONTRACTOR SHALL BE RESPONSIBLE FOR COORDINATION OF ALL UTILITY AND PLUMBING LINES. SEE 20S3-02.
 - PROVIDE THICKENED SLAB UNDER ALL INTERIOR PARTIAL HEIGHT MASONRY PARTITION WALLS. COORDINATE LOCATION OF WALLS WITH ARCH PRIOR TO CONSTRUCTION. SEE 1S3-01.
 - F.D. INDICATES FLOOR DRAIN. SLOPE SLAB TO DRAIN.

Smallwood, Reynolds, Stewart & Associates, Inc. Architects

One Piedmont Center, Suite 303 3565 Piedmont Road Atlanta, Georgia 30305

REVISIONS / PRINTED

REV. NO.	DATE	REMARKS
1	10.10.19	ISSUED FOR PERMIT/ISSUE FOR CONSTRUCTION
2	10.10.19	ISSUED FOR PERMIT/ISSUE FOR CONSTRUCTION

INSTRUCTIONAL UNIT

REGULAR CLASSROOMS	46
MUSIC	1
PHYSICAL EDUCATION	1
ART CENTER	1
TOTAL	51

PROJECT SUMMARY

DESCRIPTION	AREA (SQ FT)
REGULAR CLASSROOMS	71,193 SF
MUSIC	3,239 SF
PHYSICAL EDUCATION	10,631 SF
ART CENTER	1,188 SF
TOTAL	86,251 SF

COVERED AREAS (SEE CANOPIES)

COVERED AREAS (SEE CANOPIES)	5,188 SF
TOTAL	91,439 SF

RCPS

GEORGIA REGISTERED PROFESSIONAL ARCHITECT

DATE: 10.01.2019

JOB NO: 218036.00

SHEET NO: S1-01A

ISSUED FOR CONSTRUCTION