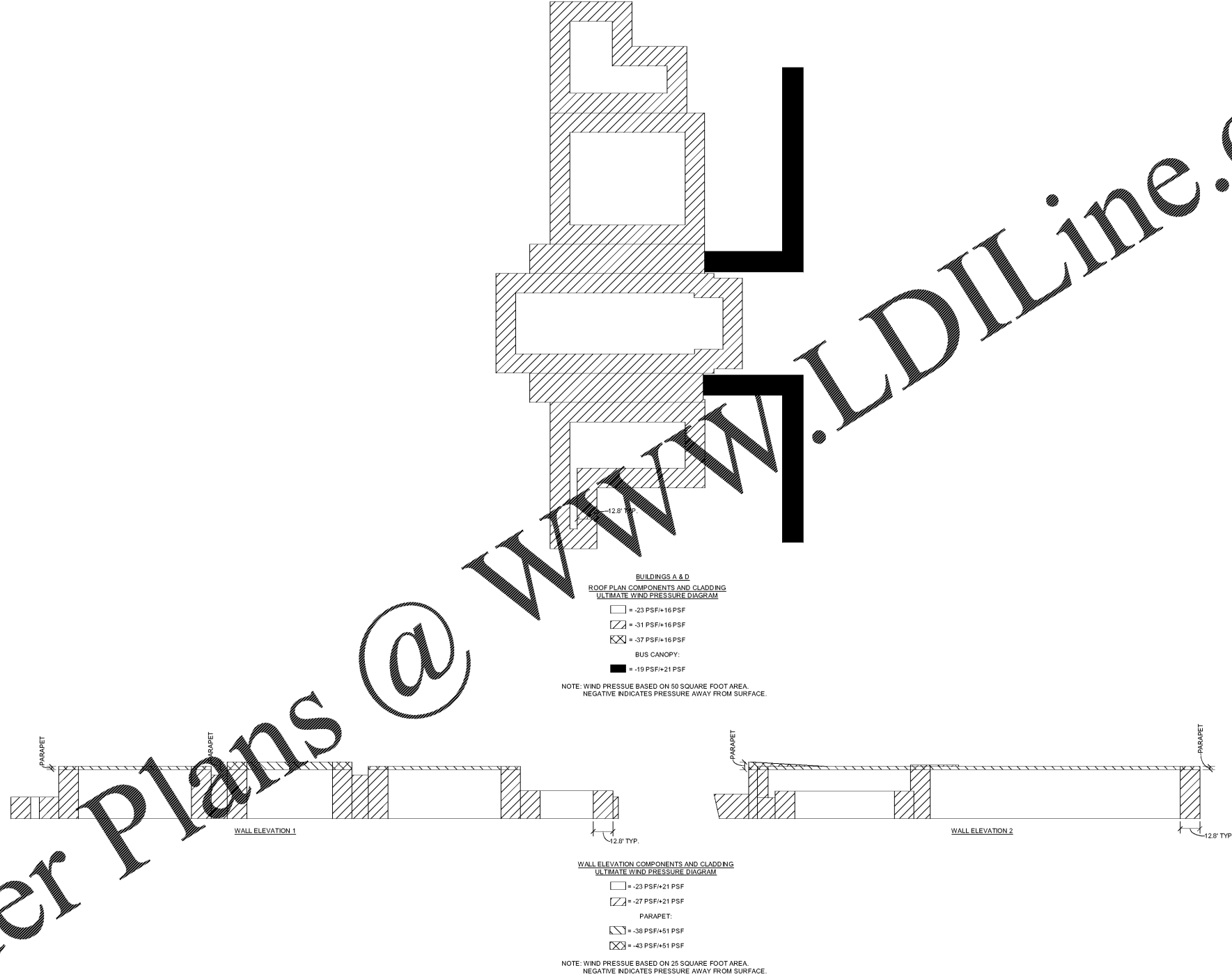


Order Plans @ www.LDILine.com



Smallwood, Reynolds, Stewart & Associates, Inc. Architects

One Piedmont Center, Suite 303 3565 Piedmont Road Atlanta, Georgia 30305

COMPONENTS AND CLADDING DIAGRAMS

J.H. HOUSE ELEMENTARY SCHOOL
 3100 Zingira Road NE, Conyers, GA 30012

DATE: _____

JOB NO. **218036.00**

SHEET NO. **S0-03**

ISSUED FOR CONSTRUCTION

REVISIONS / PRINTED

REV. NO.	DATE	REMARKS
06.16.19		REVISION CHECK SET
10.01.19		ISSUED FOR PERMIT/DIGGING PERMITS

INSTRUCTIONAL UNITS

UNITS	REGULAR CLASSROOMS	REGULAR FLEX AREAS	MUSIC	PHYSICAL EDUCATION	ART CENTER	TOTAL
46	71,193 SF	32,239 SF	106,631 SF	5,198 SF	2,858 SF	216,019 SF

PROJECT SUMMARY
 PROJECT: J.H. HOUSE ELEMENTARY SCHOOL
 GRADES: PRE-K THROUGH 5TH
 P.T.E. #00
 C.O.D. # 1 TO BE ASSIGNED

COVERED AREAS (I.E. CANOPIES)
 COVERED AREAS
 TOTAL

RCPS

SMALLWOOD REYNOLDS STEWART & ASSOCIATES, INC.
 ARCHITECTS
 3100 ZINGIRA ROAD NE
 CONYERS, GA 30012
 PHONE: 770.932.1111
 FAX: 770.932.1112
 WWW.SMALLWOODREYNOLDSSTEWART.COM