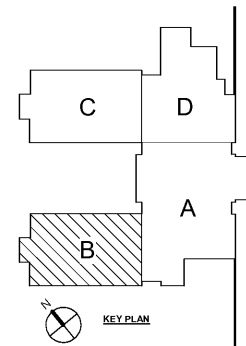


LEVEL 02 PART B - C & HW  
1/8" = 1'-0"



**MBA**  
CONSULTING  
ENGINEERS

MBA# 18033

MATHESON HALL & ASSOCIATES, INC.  
11350 ELKING RD., SUITE F-3  
ROSWELL, GEORGIA 30076  
PHONE: 770.754.1073  
WWW.MATHESONHALL.COM

Order Plans @ [WWW.LDILine.com](http://WWW.LDILine.com)

Smallwood, Reynolds, Stewart & Associates, Inc. Architects

One Piedmont Center, Suite 303 3565 Piedmont Road Atlanta, Georgia 30305

LEVEL 02 PART B - C & HW

J.H. HOUSE ELEMENTARY SCHOOL  
3100 Zingira Road NE, Conyers, GA 30012

DATE: 10-01-2019  
JOB NO.: 218036.00  
SHEET NO.: P2-02.B

ISSUED FOR CONSTRUCTION

REVISIONS / PRINTED

REV. NO.	DATE	REMARKS
00019	08/19/19	ISSUE FOR SET
00019	08/19/19	ISSUE FOR BIDDING
00019	08/19/19	PERMIT BLUE

RCPS

GEORGIA REGISTERED PROFESSIONAL ARCHITECT