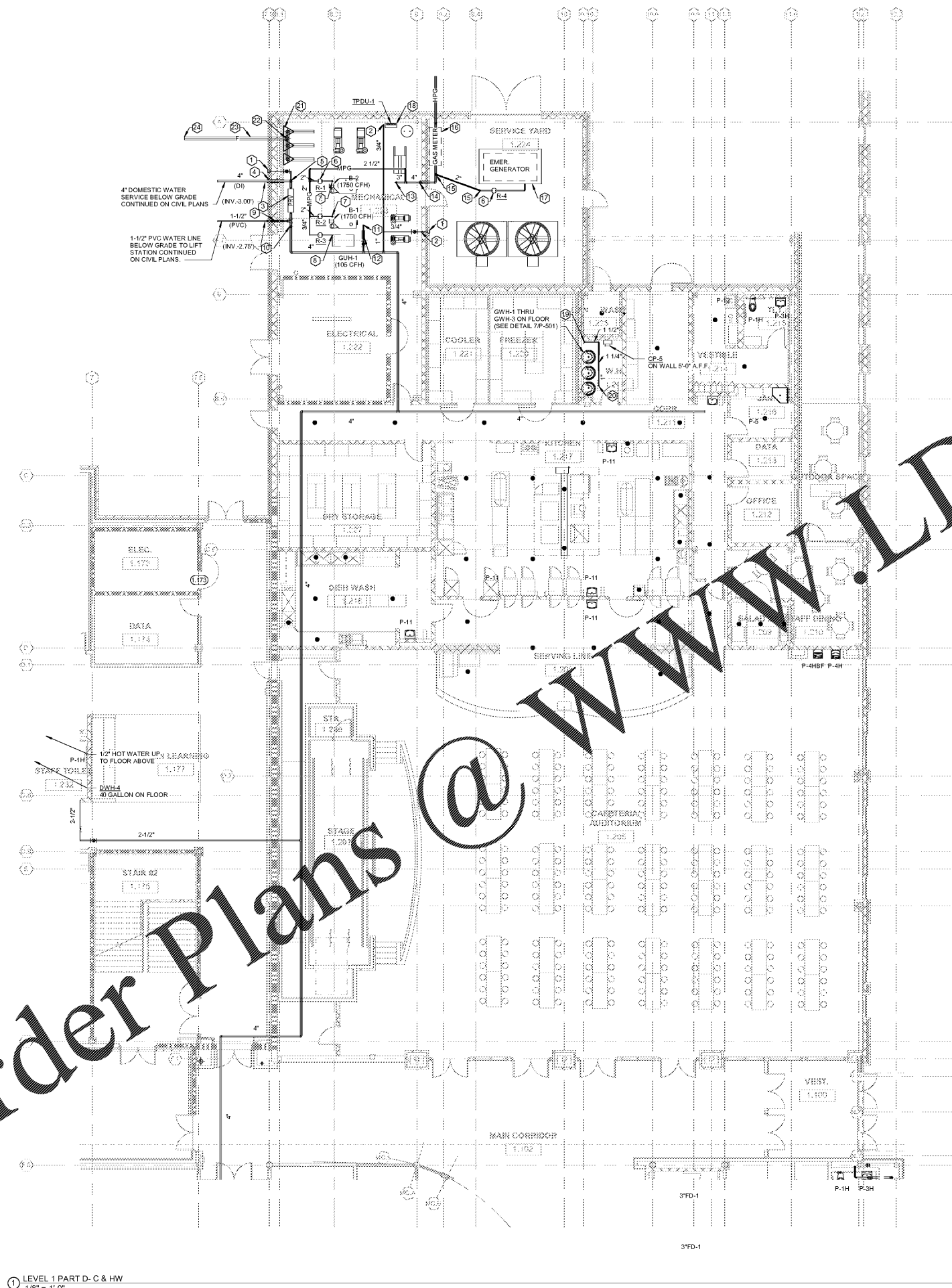
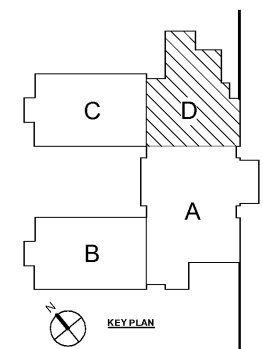


Order Plans @



- PLUMBING NOTES-SHEET P2-01.D ONLY
- 1 3/4" NFWH (24" AFG +/- IN BRICK COURSES).
 - 2 3/4" CW DROP TIGHT TO WALL IN ROOM.
 - 3 PRESSURE REDUCING VALVE (PRV) STATION. SEE DETAIL 10P-500.
 - 4 4" DOMESTIC WATER SERVICE ENTRANCE. SEE DETAIL 3P-503.
 - 5 4" CW DOWN TO BELOW FLOOR.
 - 6 GAS PRESSURE REGULATOR (TYPICAL) SEE DETAIL 8P-501 FOR PIPING AND ACCESSORIES AND SCHEDULE FOR SIZE AND CAPACITY. ROUTE 1" REGULATOR RELIEFS TO EXTERIOR WALL AND TERMINATE THRU WALL 10'-0" A.F.F. WITH 90 DEGREE ELBOW TURNED DOWN WITH BIRD SCREEN. CAULK PENETRATIONS AND PAINT TO MATCH ADJACENT WALL SURFACE. COORDINATE TERMINATION LOCATION TO MAINTAIN A MINIMUM OF 10' SEPARATION FROM OUTSIDE AIR INTAKES.
 - 7 2" GAS DROP TO BOILER WITH 2" BALL VALVE IN VERTICAL AND UNION AT UNIT CONNECTION. PROVIDE 6" LONG DIRT LEG BELOW UNIT CONNECTION WITH 2" THREADED REMOVAL CAP.
 - 8 3/4" GAS DROP TO UNIT HEATER WITH ISOLATION BALL VALVE IN VERTICAL AND 6" DIRT LEG BELOW UNIT WITH 3/4" THREADED REMOVAL CAP.
 - 9 2" STEEL PIPE SUPPORT AT ALL FOOTING.
 - 10 1-1/2" CW DOWN TO BELOW GRADE WITH ISOLATION BALL VALVE AND 1-1/2" DOUBLE CHECK VALVE ASSEMBLY IN VERTICAL.
 - 11 BOILER WATER SUPPLY LINE. SEE MECHANICAL PLANS FOR CONTINUATION.
 - 12 1/2" RFB FLOW PREVENTER OVERHEAD. ROUTE 1/2" DRAIN TO NEAREST FLOOR DRAIN.
 - 13 1" GAS UP TO ROOF ABOVE. CONTINUED ON P-100.
 - 14 1" GAS DROP TIGHT TO WALL IN ROOM.
 - 15 2" MPG DOWN TO BELOW GRADE.
 - 16 GAS METER ASSEMBLY. SEE DETAIL 5P-501.
 - 17 EMERGENCY GAS GENERATOR. SEE DETAIL 6P-501 FOR PIPING.
 - 18 TRAP PRIMER DISTRIBUTION UNIT. SEE DETAIL 3P-500.
 - 19 1-1/2" GAS UP TO ROOF ABOVE. CONTINUED ON P-100.
 - 20 1" GAS DROP TO HEATER (TYPICAL) SEE DETAIL 7P-501.
 - 21 SPRINKLER ALARM VALVE ASSEMBLY. SEE DETAIL 7P-502.
 - 22 6" FIRE LINE DOWN TO BELOW FLOOR.
 - 23 6" FIRE LINE ENTRANCE. SEE DETAIL 3P-503.
 - 24 6" FIRE BELOW GRADE. CONTINUED ON CIVIL PLANS.



① LEVEL 1 PART D-C & HW
1/8" = 1'-0"

MBA CONSULTING ENGINEERS
MBA# 18033
MATHESON HALL & ASSOCIATES, INC.
11500 ELKING RD., SUITE F-3
ROSWELL, GEORGIA 30076
PHONE: (770) 754-0773
WWW.MATHESONHALL.COM

Smallwood, Reynolds, Stewart & Associates, Inc. Architects
One Piedmont Center, Suite 303 3565 Piedmont Road Atlanta, Georgia 30305

LEVEL 01 PART D-C & HW
J.H. HOUSE ELEMENTARY SCHOOL
3100 Zingira Road NE, Conyers, GA 30012

DATE: 10-01-2019
JOB NO.: 218036.00
SHEET NO.: P2-01.D

ISSUED FOR CONSTRUCTION

REV. NO.	DATE	REMARKS
00019	08/19/19	ISSUE FOR SET PERMIT Q/C
00018	08/19/19	ISSUE FOR SET PERMIT Q/C

RCPS
GEORGIA REGISTERED PROFESSIONAL ENGINEERS