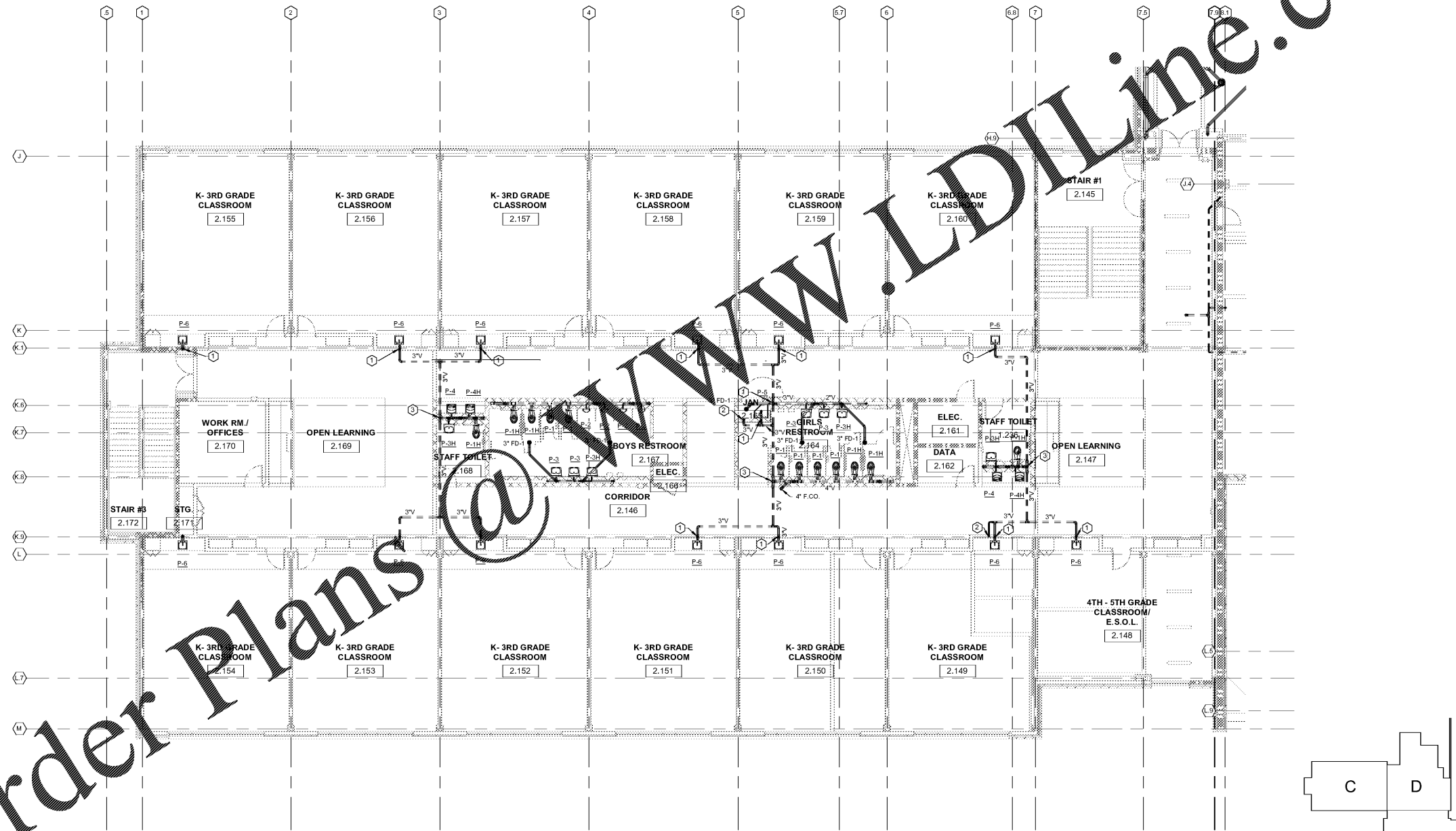
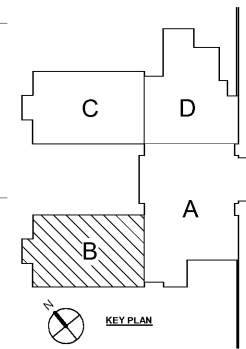


Order Plans @ www.LDILine.com



LEVEL 2 PART B - S, W & V
1/8" = 1'-0"



- PLUMBING KEYNOTES- SHEET P1-02.B ONLY
- 3"W&V STACK DOWN IN WALL. CONTINUED ON P1-01.B.
 - 3"V DN IN WALL/CHASE TO FLOOR BELOW. CONTINUED ON P1-01.B.
 - 4"V DN IN CHASE AND 4" VTR.

REVISIONS / PRINTED		
REV. NO.	DATE	REMARKS
00019	08/19/19	GE O.E. CHECK SET
00019	08/19/19	ISSUE FOR BIDDING PERMIT GUIDE



STEWART & ASSOCIATES, INC.
REGISTERED PROFESSIONAL ENGINEERS
MEMBER OF THE ENGINEERING COUNCIL OF GEORGIA

Smallwood, Reynolds, Stewart & Associates, Inc. Architects
One Piedmont Center, Suite 303 3565 Piedmont Road Atlanta, Georgia 30305

LEVEL 02 PART B - S, W & V
J.H. HOUSE ELEMENTARY SCHOOL
3100 Zingira Road NE, Conyers, GA 30012

MBA CONSULTING ENGINEERS
MBA # 18033
MATHESON HALL & ASSOCIATES, INC.
11280 ELKING RD., SUITE F-3
ROSWELL, GEORGIA 30076
PHONE: 770.274.1073
WWW.MATHESONHALL.COM

DATE	10-01-2019
JOB NO.	218036.00
SHEET NO.	P1-02.B

ISSUED FOR CONSTRUCTION