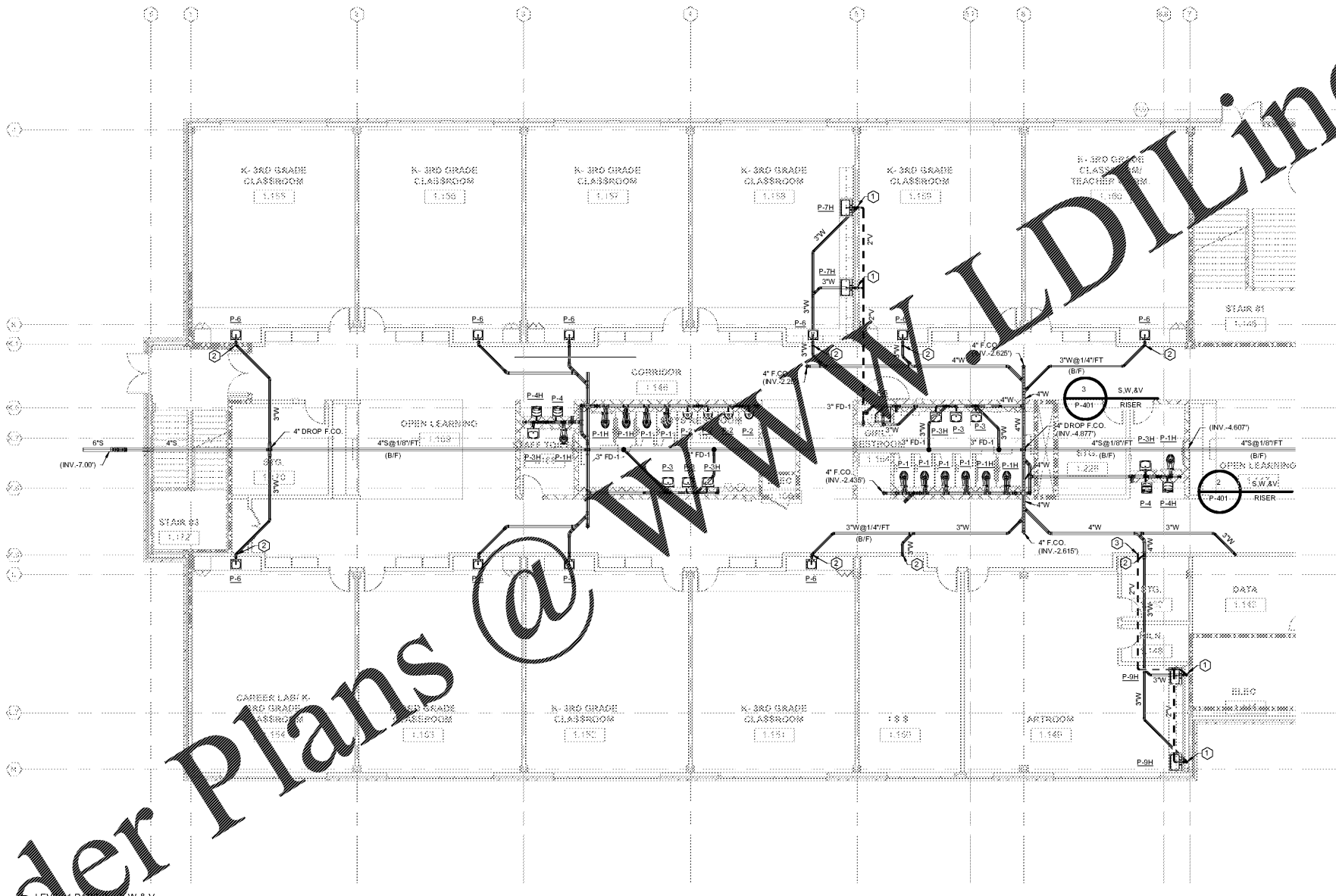


Order Plans @

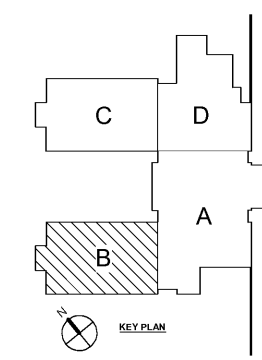
www

LDILine.com

- ① PLUMBING KEYNOTES - SHEET P1-01.B
- 1 2" W&V DN IN WALL
 - 2 3" W&V STACK UP AND DN IN WALL. CONTINUED ON P1-02.B.
 - 3 3" V UP TO FLOOR ABOVE. CONTINUED ON P1-02.B.



LEVEL 01 PART B - S, W & V
1/8" = 1'-0"



MBA
CONSULTING
ENGINEERS

MBA# 18033

MATHESON HALL & ASSOCIATES, INC.
11355 ELKING RD., SUITE F-3
ROSWELL, GEORGIA 30076
PHONE: (770) 754-1075
WWW.MATHESONHALL.COM

REV. NO.	DATE	REMARKS
01/19/19	05/02/19	ISSUE FOR SET PERMIT
02/19/19	05/02/19	ISSUE FOR PERMIT



DESIGNED BY
JAMES C. TAYLOR
REGISTERED PROFESSIONAL ENGINEER
NO. 14857
STATE OF GEORGIA
EXPIRES 12/31/2024

Smallwood, Reynolds, Stewart & Associates, Inc. Architects
One Piedmont Center, Suite 303 3565 Piedmont Road Atlanta, Georgia 30305

LEVEL 01 PART B - S, W & V
J.H. HOUSE ELEMENTARY SCHOOL
3100 Zingira Road NE, Conyers, GA 30012

DATE: 10-01-2019
JOB NO: 218036.00
SHEET NO: P1-01.B

ISSUED FOR CONSTRUCTION