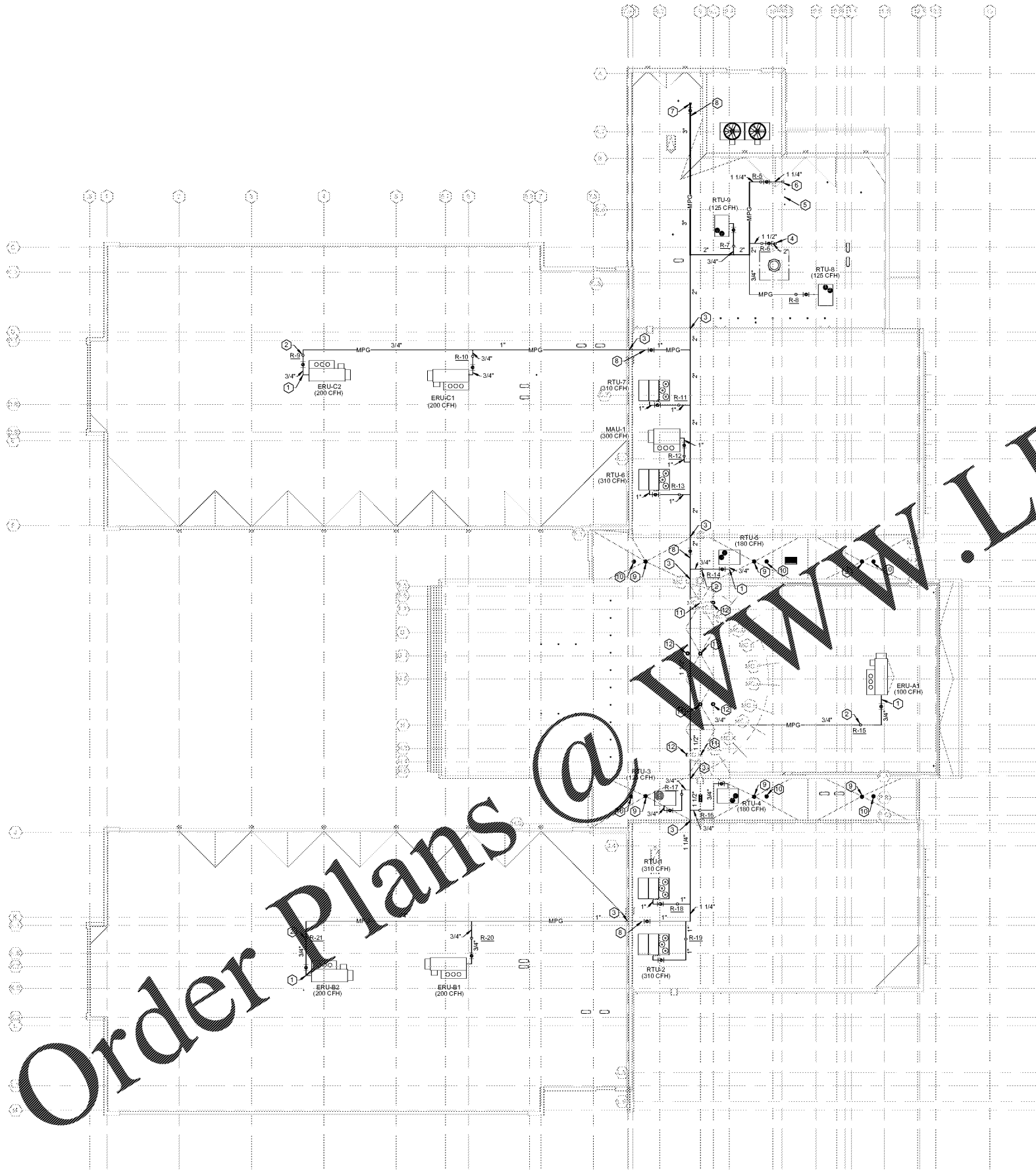


1 OVERALL ROOF PLAN  
1/16" = 1'-0"



PLUMBING NOTES-SHEET P1-01 ONLY

- 1 TYPICAL RTU/ERU GAS CONNECTION. SEE DETAIL 9P-501.
- 2 GAS PRESSURE REGULATOR (TYPICAL). SEE DETAIL 8P-501 FOR PIPING AND ACCESSORIES AND SCHEDULE FOR SIZE AND CAPACITY.
- 3 GAS PIPE RISE/DROP OVER HIGH/LOW ROOF. SUPPORT VERTICAL PIPING WITH ALL THREAD ROD AND SPLIT RING PIPE CLAMP AT MAXIMUM 6 FOOT SPACING.
- 4 1-1/2" GAS DOWN THRU ROOF IN PIPE CURB ASSEMBLY TO KITCHEN UDS UNIT. CONTINUED ON P2-01.D.
- 5 WATER HEATER FLUES THRU ROOF IN PIPE CURB ASSEMBLY.
- 6 1-1/4" GAS DOWN THRU ROOF IN PIPE CURB ASSEMBLY. CONTINUED ON P2-01.D.
- 7 3" MPG DOWN THRU ROOF IN PIPE CURB ASSEMBLY. CONTINUED ON P2-01.D.
- 8 LINE SIZE ISOLATION BALL AND VALVE.
- 9 4" ROOF DRAIN (RD)
- 10 4" OVERFLOW ROOF DRAIN (OFD)
- 11 6" RD
- 12 6" OFD

PIPE SIZE	MAX SUPPORT SPACING
3/4"	8 FEET
1"	8 FEET
1-1/4"	8 FEET
1-1/2"	8 FEET
2"	10 FEET
2-1/2"	10 FEET
3"	10 FEET

SUPPORT SHALL BE LOCATED WITHIN 3FT OF ALL CHANGES IN DIRECTION AND ELEVATION

GENERAL NOTES:

- 1) CONTRACTOR SHALL COORDINATE LOCATION OF GAS PRESSURE REGULATORS WITH OUTSIDE AIR INTAKES ON UNITS SO THAT 10'-0" MINIMUM SEPARATION IS MAINTAINED BETWEEN INTAKE AND REGULATOR.
- 2) CONTRACTOR SHALL COORDINATE LOCATION OF SANITARY VENTS THRU ROOF (VTR'S) SO THAT 10'-0" MINIMUM SEPARATION IS MAINTAINED BETWEEN VENT AND UNIT OUTSIDE AIR INTAKE.
- 3) GAS PIPING SHALL BE CLEANED AND PRIMED AT THE TIME OF INSTALLATION. FINAL PAINTING SHALL BE DONE AFTER THE SYSTEM IS TESTED, AND PRIOR TO BEING PLACED IN SERVICE.
- 4) CONTRACTOR SHALL COORDINATE EXACT LOCATION OF VENTS THRU ROOF TO BE A MINIMUM 3'-0" FROM LOW POINT VALLEY IN FLAT ROOF AREAS.
- 5) SANITARY VENTS THRU ROOF SHALL EXTEND 12" ABOVE ROOF MEASURED FROM TOP OF ROOF TAPER INSULATION AT POINT OF ROOF PENETRATION.

Order Plans @ WWW.LDILine.com

REV. NO.	DATE	REMARKS



STEWART REYNOLDS REYNOLDS, INC.  
1100 BAYVIEW DRIVE, SUITE 100  
ROSELAND, GA 30076  
PHONE: (770) 754-0773  
WWW.STEWARTREYNOLDS.COM

OVERALL ROOF PLAN  
J.H. HOUSE ELEMENTARY SCHOOL  
3100 Zingira Road NE, Conyers, GA 30012

**MBA CONSULTING ENGINEERS**  
MBA # 18033  
MATHESON HALL & ASSOCIATES, INC.  
11150 BLAKING RD, SUITE F-3  
ROSELAND, GEORGIA 30076  
PHONE: (770) 754-0773  
WWW.MATHESONHALL.COM

DATE	10-01-2019
JOB NO.	218036.00
SHEET NO.	P1-01

ISSUED FOR CONSTRUCTION

One Piedmont Center, Suite 303 3565 Piedmont Road Atlanta, Georgia 30305

Smallwood, Reynolds, Stewart & Associates, Inc. Architects