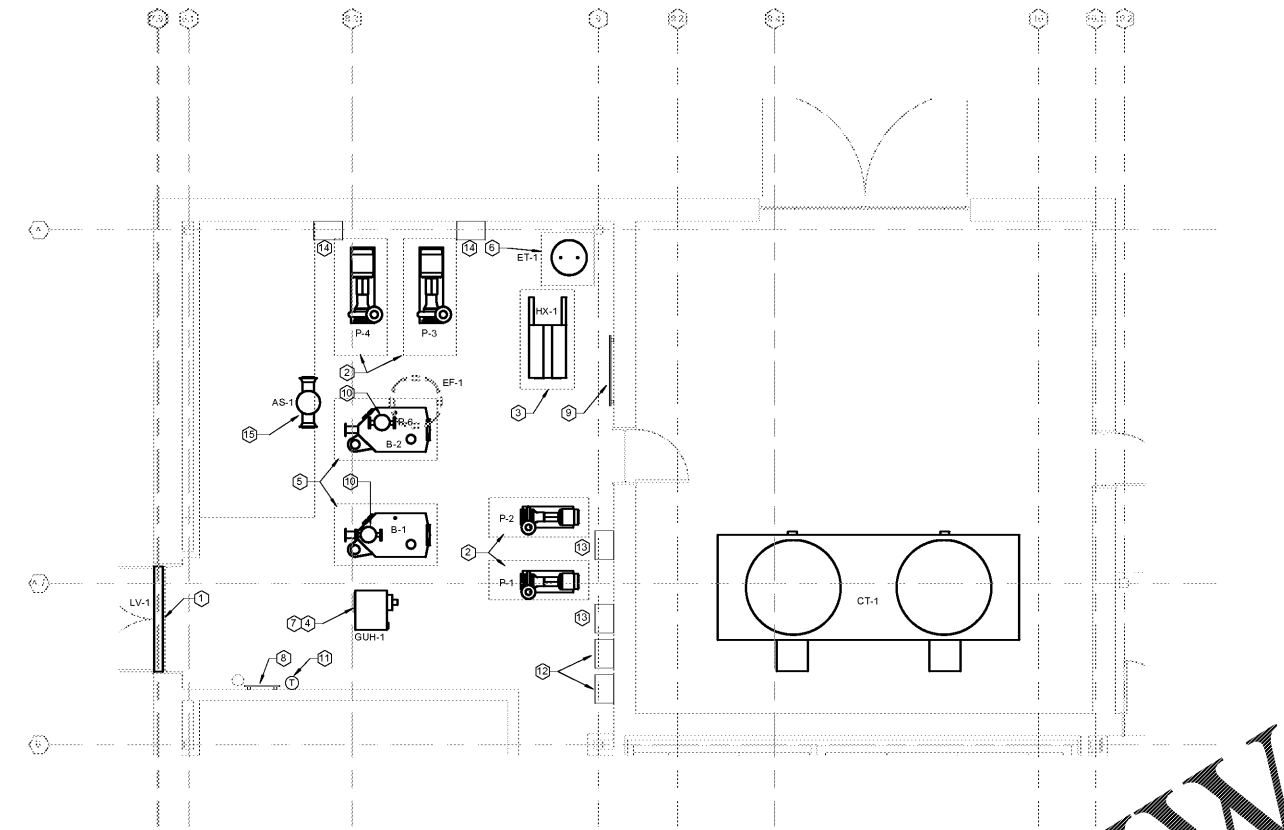
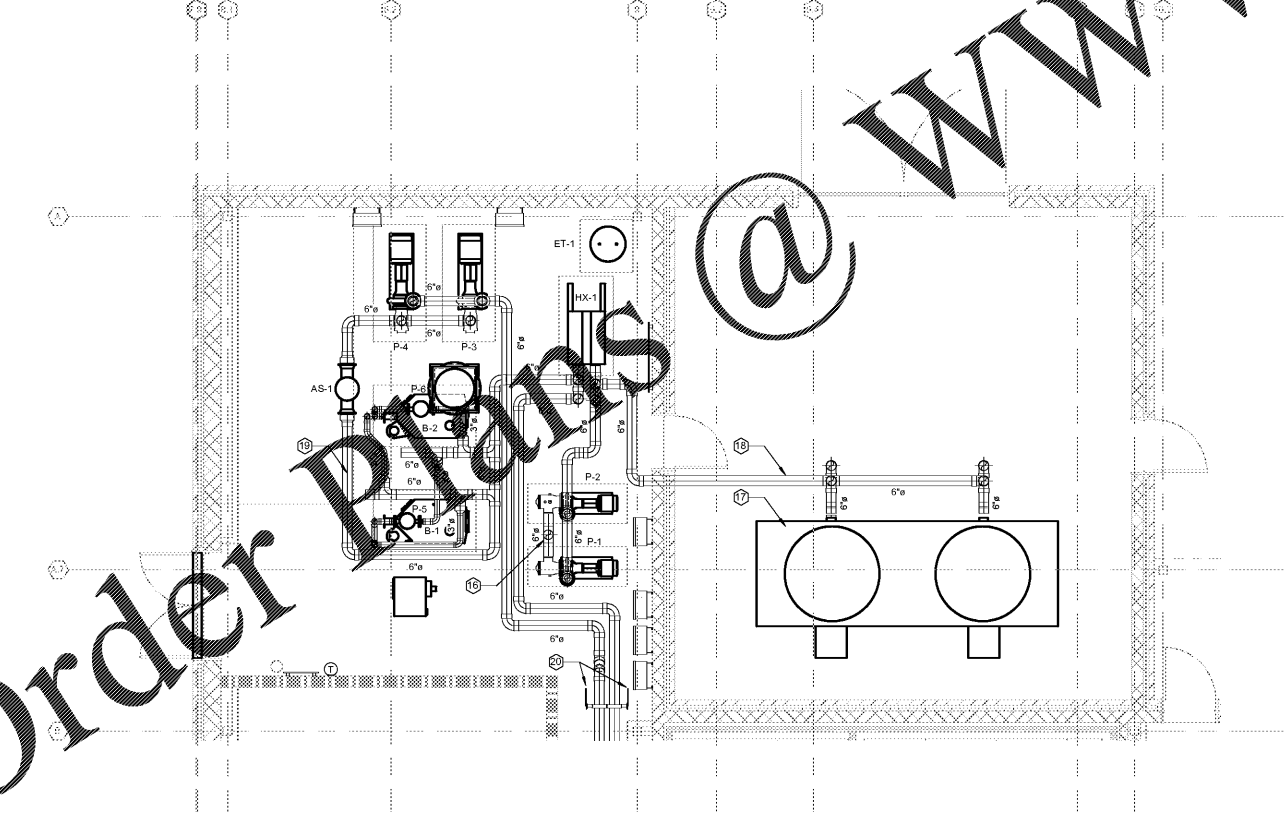


Order Plans @



1 ENLARGED MECHANICAL ROOM PLAN  
1/4" = 1'-0"



2 ENLARGED MECHANICAL ROOM PLAN PIPING  
1/4" = 1'-0"

KEYNOTES - THIS SHEET ONLY

1. INTAKE LOUVER WITH FULL SIZE DUCT AND MOTORIZED DAMPER. COVER OPEN WITH EXPANDED METAL MESH. INTERLOCK WITH THERMOSTAT AND ASSOCIATED EXHAUST FAN.
2. PUMP MOUNTED ON 6" THICK, 3,000 PSI CONCRETE PAD MIN. 6" LARGER THAN PUMP ON ALL SIDES.
3. HEAT EXCHANGER HOUSEKEEPING PAD SHALL BE 6" THICK, 3,000 PSI CONCRETE AND 6" LARGER THAN HEAT EXCHANGER ON ALL SIDES.
4. GAS UNIT HEATER WITH CONCENTRIC FLUE AND COMBUSTION DUCT UP THROUGH ROOF WITH ROOF CURB. PROVIDE VENT CAP ON CONCENTRIC FLUE KIT.
5. HOT WATER BOILER. MOUNT ON 6" THICK, 3,000 PSI CONCRETE PAD MIN. 6" LARGER THAN BOILER ON ALL SIDES. PROVIDE MANUFACTURER'S DIRECT AIR KIT FOR COMBUSTION AIR. VENT AIR FROM EACH BOILER SHALL BE AL29-4C AND COMBINED AND ROUTED PER MANUFACTURER'S REQUIREMENTS. COMBUSTION AIR FOR EACH BOILER SHALL BE TYPE "B" AND COMBINED AND ROUTED PER MANUFACTURER'S REQUIREMENTS. VENT AND COMBUSTION SHALL BE ROUTED DIRECTLY UP AND THROUGH ROOF.
6. EXPANSION TANK HOUSEKEEPING PAD SHALL BE 6" THICK, 3,000 PSI AND 6" LARGER THAN EXPANSION TANK ON ALL SIDES. SUPPORT UNIT HEATER WITH THREADED RODS AND UNI-STRUT. MOUNT 9'-0" AFF.
7. MAIN CONTROL PANEL.
8. 4' X4' CHEMICAL TREATMENT BACKBOARD. COORDINATE EXACT REQUIREMENTS WITH OWNER'S CHEMICAL TREATMENT PREFERRED COMPANY.
9. SUPPORT INLINE PUMP FROM STRUCTURE WITH THREADED RODS AND UNI-STRUT.
10. THERMOSTAT SERVES EF-1 AND LOUVER LV-1'S MOTORIZED DAMPER.
11. COOLING TOWER FAN VFD WITH INTEGRAL DISCONNECT.
12. COOLING TOWER PUMP VFD WITH INTEGRAL DISCONNECT.
13. LOOP PUMP VFD WITH INTEGRAL DISCONNECT.
14. AIR/OIL SEPARATOR SHALL BE SUPPORTED FROM STRUCTURE WITH THREADED ROD AND UNI-STRUT.
15. 6" PIPE DOWN BELOW GRADE. ROUTE TO COOLING TOWER. PIPE SHALL BE APPROXIMATELY 36" BELOW GRADE.
16. COORDINATE WITH OTHER TRADES.
17. COOLING TOWER SHALL BE MOUNTED ON STRUCTURAL SUPPORTS MIN. 5'-0" AFF. COORDINATE EXACT DIMENSIONS OF PURCHASED COOLING TOWER.
18. HORIZONTAL PIPING AT COOLING TOWER SHALL BE SUPPORTED WITH 2-1/2" SCH. 80 GALVANIZED STEEL PIPE AND CONCRETE BASES. BASE PLATES SHALL BE WELDED TO SUPPORT PIPES AND ANCHORED TO CONCRETE SLAB. PIPE SADDLES SHALL BE WELDED TO THE TOP OF THE PIPE SUPPORTS. (TYPICAL)
19. ALL HORIZONTAL PIPING IN MECHANICAL ROOM SHALL BE MIN. 7'-0" AFF.
20. SHUT-OFF VALVES. TYPICAL AT EVERY MECHANICAL CORRIDOR AND LEVEL. REFER TO SPECIFICATION FOR VALVE TYPE AND REQUIREMENTS.

WWW.LDILine.com

REV. NO.	DATE	REVISIONS / PRINTED
00010		ISSUE FOR PERMIT / ISSUE FOR PERMIT / ISSUE

PROJECT SUMMARY	REGISTRATION STATES
PROJECT: J.H. HOUSE ELEMENTARY SCHOOL GRADE: PRE-K THROUGH 5TH S.D. DISTRICT: TO BE ASSIGNED BUILDING AREA: 71,028 SF LEVEL: 02 COVERED AREAS: 37,262 SF TOTAL: 108,290 SF	REGULAR CLASSROOMS: 46 REGULAR REARINGS: 1 MISC. REARINGS: 1 PHYSICAL EDUCATION CENTER: 1 ASLT: 1 TOTAL: 51



STEWART & ASSOCIATES, INC.  
 REGISTERED PROFESSIONAL ENGINEERS  
 STATE OF GEORGIA  
 LICENSE NO. 10000  
 MECHANICAL ENGINEERING

Smallwood, Reynolds, Stewart & Associates, Inc. Architects

ENLARGED MECHANICAL ROOM J.H. HOUSE ELEMENTARY SCHOOL 3100 Zingira Road NE, Conyers, GA 30012	DATE: 10-01-2019 JOB NO.: 218036.00 SHEET NO.: M4-01
---	--

**MBA** CONSULTING ENGINEERS  
 MBA# 18033  
 MATHESON-BALL & ASSOCIATES, INC.  
 11385 ELKINS RD, SUITE F3  
 ROSWELL, GEORGIA 30074  
 PHONE: (770) 751-0772  
 WWW.MATHESONBALL.COM

ISSUED FOR CONSTRUCTION