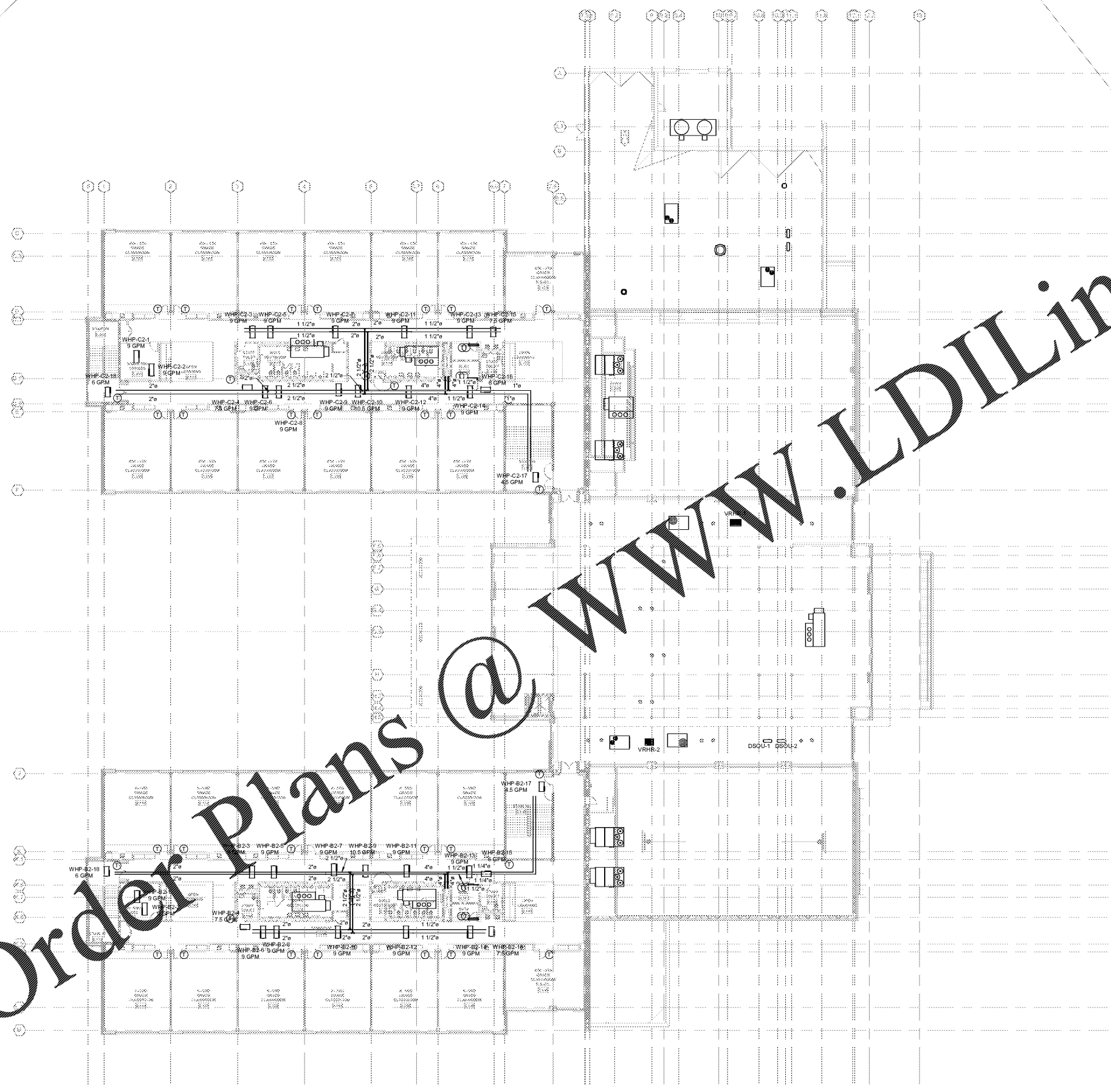


Order Plans @ www.LDILine.com



- GENERAL NOTES:
- REFER TO DETAIL FOR INDIVIDUAL WATER SOURCE HEAT PUMP PIPING CONNECTIONS. REFER TO PIPE SIZING CHART AND CONDENSATE PIPE SIZING CHART ON THIS SHEET FOR INDIVIDUAL WATER SOURCE HEAT PUMP PIPING SIZES. REFER TO DETAIL FOR BRANCH PIPING CONNECTION TO MAIN. PROVIDE AND INSTALL AUTOMATIC AIR VENTS AT HIGH POINTS IN PIPING SYSTEM.
 - PROVIDE AND INSTALL MANUAL AIR VENTS AT END OF MAIN PIPING RUNS.
 - ALL CONDENSATE PIPING WITHIN THE BUILDING SHALL BE INSULATED COPPER RUN AT A UNIFORM 1/8" SLOPE. REFER TO INDIVIDUAL KEYNOTES FOR ROUTING AND TERMINATION OF CONDENSATE. REFER TO PLUMBING DRAWINGS FOR EXACT LOCATION OF DRAINS.

CONDENSATE DRAIN PIPING SIZING CHART

TONS OF REFRIGERATION	MINIMUM PIPE SIZE
0 TO 20	1"
21 TO 40	1-1/4"
40 TO 90	1-1/2"
OVER 90	2"

NOTES:

- SINGLE UNIT SIZE SHALL NOT BE LESS THAN 1/2 TON.
- COORDINATE ACTUAL MAIN LOCATION WITH PLUMBING TRIM.

WSHP SUPPLY & RETURN PIPE SIZING CHART

UNIT GPM	BRANCH PIPE SCHEDULED SIZE
0.0 THRU 7.0	1"
7.1 THRU 16.0	1-1/4"

NOTE: SIZES SHOWN ARE MINIMUM BRANCH PIPE SIZE REGARDLESS OF UNIT CONNECTION SIZE.

① LEVEL 2 - OVERALL FLOOR PLAN - HVAC PIPING
1/16" = 1'-0"

MBA CONSULTING ENGINEERS
MBA# 18033
MATHESON-BALL & ASSOCIATES, INC.
11385 ELKINS RD, SUITE F3
ROSWELL, GEORGIA 30076
PHONE: (770) 751-0773
WWW.MATHESONBALL.COM

Smallwood, Reynolds, Stewart & Associates, Inc. Architects
LEVEL 02 - OVERALL PLAN - HVAC PIPING
J.H. HOUSE ELEMENTARY SCHOOL
3100 Zingira Road NE, Conyers, GA 30012

REVISIONS / PRINTED

REV. NO.	DATE	REMARKS
00010		ISSUE FOR PERMIT / ISSUE

DATE: _____
JOB NO: **218036.00**
SHEET NO: **M3-02**

ISSUED FOR CONSTRUCTION



Smallwood, Reynolds, Stewart & Associates, Inc. is a member of the Smallwood, Reynolds, Stewart & Associates, Inc. group of companies. All work is performed under the supervision of a Professional Engineer.