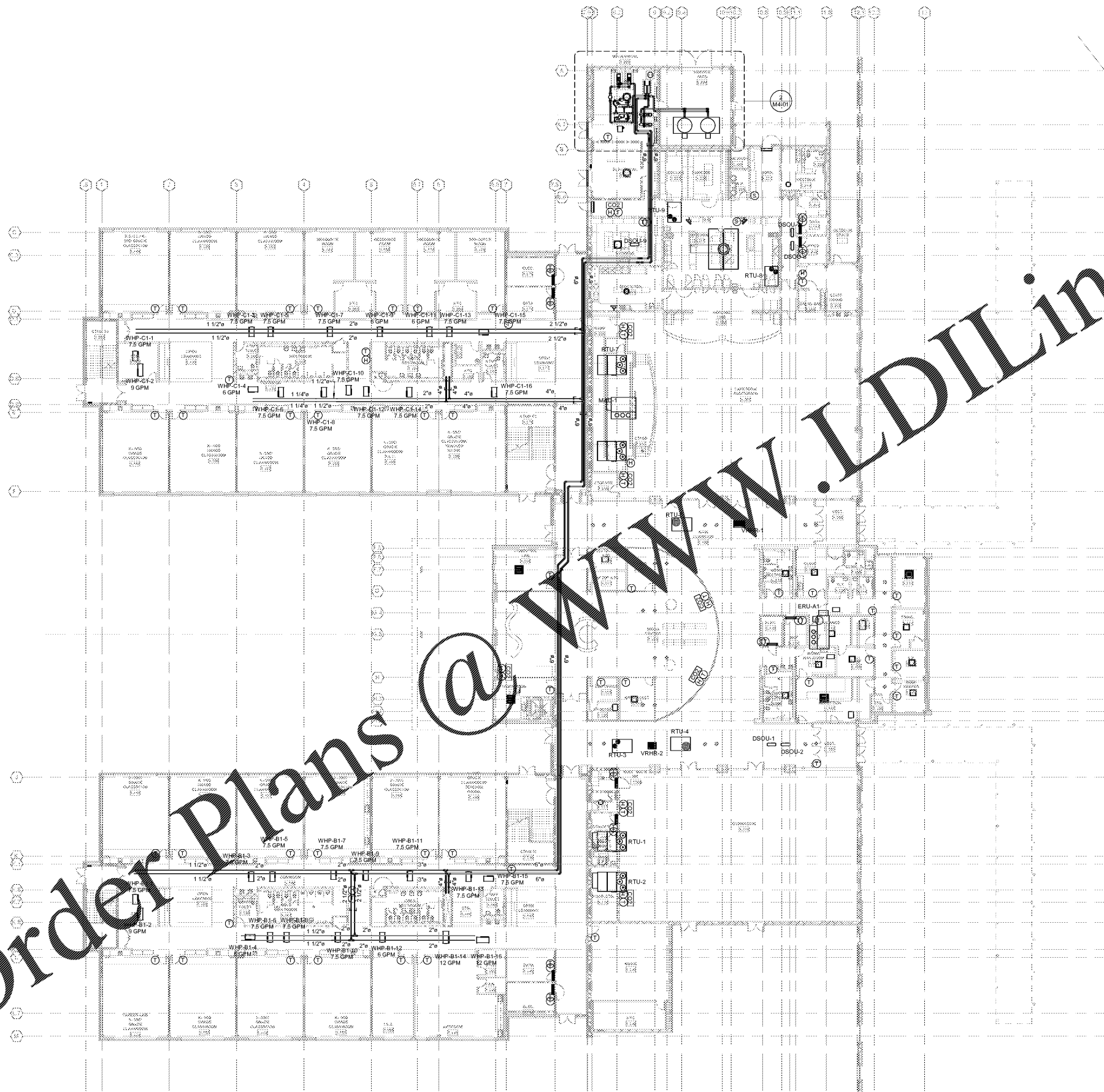


Order Plans @ WWW.LDILine.com



- GENERAL NOTES:
- REFER TO DETAIL FOR INDIVIDUAL WATER SOURCE HEAT PUMP PIPING CONNECTIONS. REFER TO PIPE SIZING CHART AND CONDENSATE PIPE SIZING CHART ON THIS SHEET FOR INDIVIDUAL WATER SOURCE HEAT PUMP PIPING SIZES. REFER TO DETAIL FOR BRANCH PIPING CONNECTION TO MAIN. PROVIDE AND INSTALL AUTOMATIC AIR VENTS AT HIGH POINTS IN PIPING SYSTEM.
 - PROVIDE AND INSTALL MANUAL AIR VENTS AT END OF MAIN PIPING RUNS.
 - ALL CONDENSATE PIPING WITHIN THE BUILDING SHALL BE INSULATED COPPER RUN AT A UNIFORM 1/8" SLOPE. REFER TO INDIVIDUAL KEYNOTES FOR ROUTING AND TERMINATION OF CONDENSATE. REFER TO PLUMBING DRAWINGS FOR EXACT LOCATION OF DRAINS.

CONDENSATE DRAIN PIPING SIZING CHART

TONS OF REFRIGERATION	MINIMUM PIPE SIZE
0 TO 20	1-1/2"
21 TO 40	2"
40 TO 90	2-1/2"
OVER 90	3"

NOTES:

- SINGLE UNIT SIZE SHALL NOT BE LESS THAN UNIT CONNECTION SIZE. COORDINATE ACTUAL DRAIN OCCUPANCY WITH PLUMBING TRADE.

WHP SUPPLY & RETURN PIPE SIZING CHART

UNIT GPM	SCHEDULED PIPE SIZE	BRANCH PIPE SIZE
0.1 THRU 7.0	1"	1-1/4"
7.1 THRU 16.0	1-1/2"	2"

NOTE: SIZES SHOWN ARE MINIMUM BRANCH PIPE SIZE REGARDLESS OF UNIT CONNECTION SIZE.

① LEVEL 1 - OVERALL FLOOR PLAN - HVAC PIPING
1/16" = 1'-0"

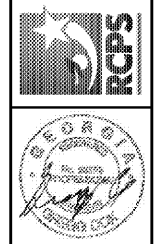
MBA CONSULTING ENGINEERS
MBA# 18033
MATHESON-BALL & ASSOCIATES, INC.
11385 ELKINS RD, SUITE F-3
ROSWELL, GEORGIA 30074
PHONE: (770) 751-0773
WWW.MATHESONBALL.COM

Smallwood, Reynolds, Stewart, Stewart & Associates, Inc. Architects

LEVEL 01 - OVERALL PLAN - HVAC PIPING

J.H. HOUSE ELEMENTARY SCHOOL
3100 Zingira Road NE, Conyers, GA 30012

DATE	
JOB NO.	218036.00
SHEET NO.	M3-01



Smallwood, Reynolds, Stewart, Stewart & Associates, Inc.
REGISTERED PROFESSIONAL ARCHITECTS
MEMBER OF THE NATIONAL ARCHITECTURAL ASSOCIATION

One Piedmont Center, Suite 303 3565 Piedmont Road Atlanta, Georgia 30305

REV. NO.	DATE	REMARKS
00010		ISSUE FOR PERMIT / ISSUE

ISSUED FOR CONSTRUCTION