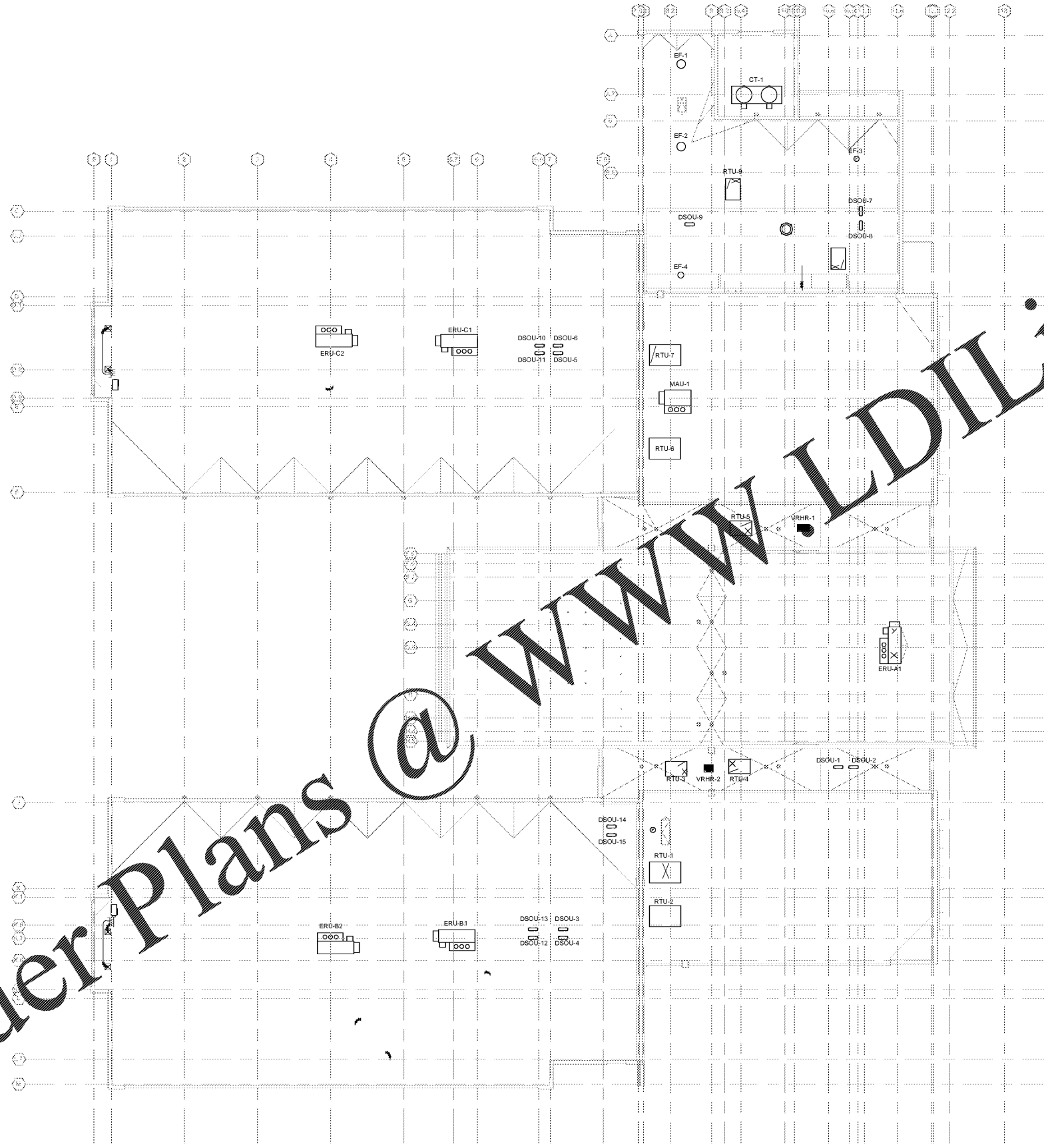


Order Plans @

WWW.DIline.com



GENERAL NOTES:  
1. ALL EXHAUST FANS, RELIEF HOODS, FLUES AND PLUMBING VENTS SHALL BE A MINIMUM OF 10' FROM ANY OUTSIDE AIR INTAKES.  
2. ALL ROOF MOUNTED EQUIPMENT SHALL BE LOCATED A MINIMUM OF 10' FROM ANY ROOF EDGE.  
3. COORDINATE ALL EQUIPMENT WITH ROOF SCREENING. REFER TO ARCHITECTURAL PLANS.  
4. PROVIDE ALL MANUFACTURER'S REQUIRED UNIT CLEARANCES.  
5. REFER TO DETAILS FOR ALL PIPE ROOF PENETRATIONS.  
6. ROOF OPENINGS SHALL BE CUT FOR DUCT OPENINGS ONLY. REMAINDER OF ROOF UNDER UNIT SHALL REMAIN.

ROOF PLAN - HVAC  
1/16" = 1'-0"

**MBA** CONSULTING ENGINEERS  
MBA# 18033  
MATHESON-BALL & ASSOCIATES, INC.  
11385 ELKINS RD, SUITE F3  
ROSWELL, GEORGIA 30074  
PHONE: (770) 785-0773  
WWW.MATHESONBALL.COM

REV. NO.	DATE	REVISIONS / PRINTED	REMARKS

RCPS
GEORGIA PROFESSIONAL ENGINEERING & ARCHITECTURE BOARD
REGISTERED PROFESSIONAL ENGINEER STATE OF GEORGIA NUMBER 36803 EXPIRES 12/31/18

Smallwood, Reynolds, Stewart & Associates, Inc. Architects  
One Piedmont Center, Suite 303 3565 Piedmont Road Atlanta, Georgia 30305

ROOF PLAN - HVAC  
J.H. HOUSE ELEMENTARY SCHOOL  
3100 Zingira Road NE, Conyers, GA 30012

DATE
JOB NO. <b>218036.00</b>
SHEET NO. <b>M2-03</b>

ISSUED FOR CONSTRUCTION