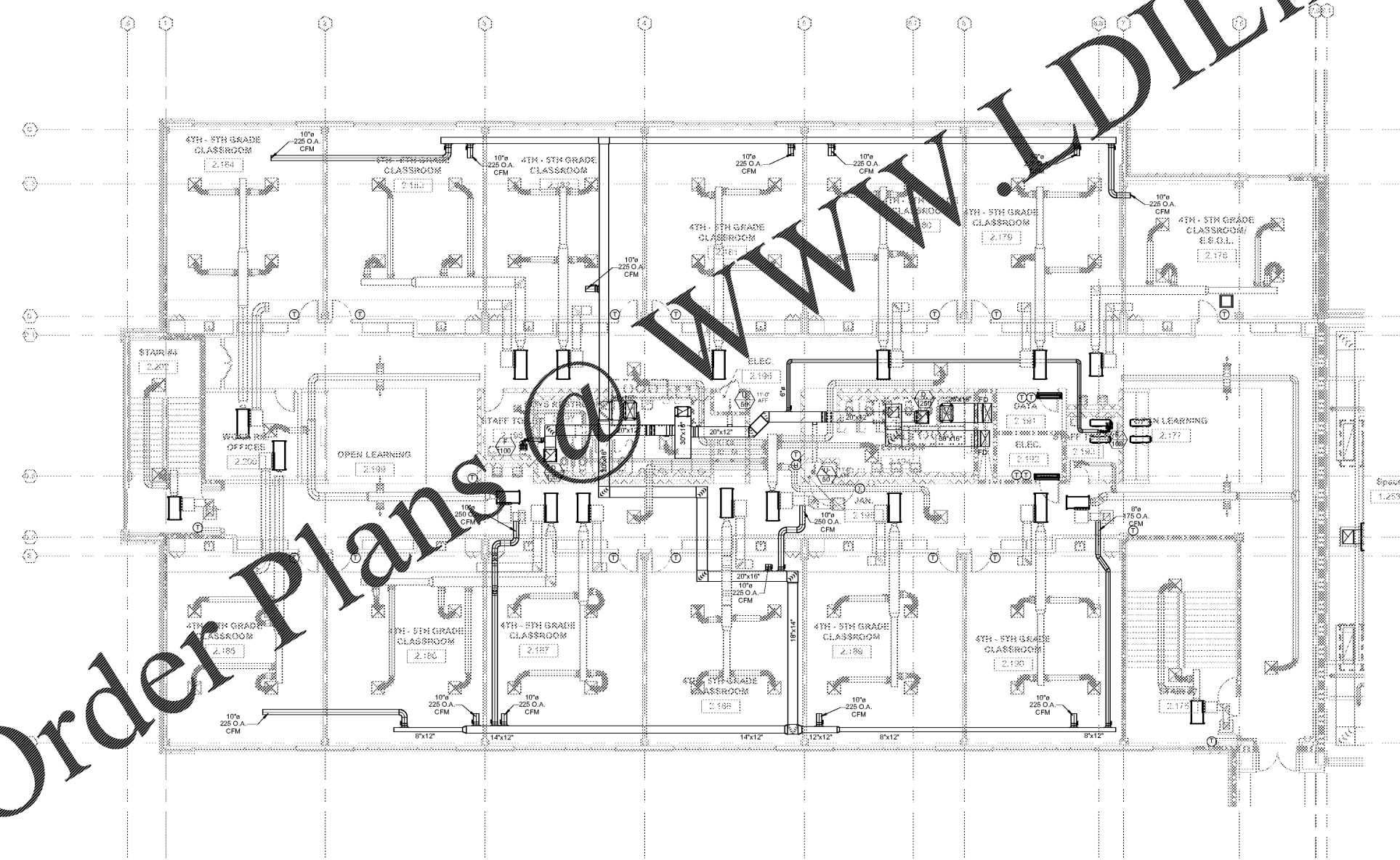


Order Plans @ WWW.DIline.com



① LEVEL 2 PART C - HVAC ERU
1/8" = 1'-0"

MBA CONSULTING ENGINEERS
MBA # 18033
MATHESON-BALL & ASSOCIATES, INC.
11385 ELKINS RD, SUITE F3
ROSWELL, GEORGIA 30074
PHONE: (770) 751-0775
WWW.MATHESONBALL.COM

LEVEL 02 PART C - HVAC ERU
J.H. HOUSE ELEMENTARY SCHOOL
3100 Zingira Road NE, Conyers, GA 30012

DATE _____

JOB NO. **218036.00**

SHEET NO. **M2-02.C**



REVISIONS / PRINTED		
REV. NO.	DATE	REMARKS
0000		ISSUE FOR SET PERMIT / OCE

Smallwood, Reynolds, Stewart, Stewart & Associates, Inc. Architects
One Piedmont Center, Suite 303 3565 Piedmont Road Atlanta, Georgia 30305

ISSUED FOR CONSTRUCTION