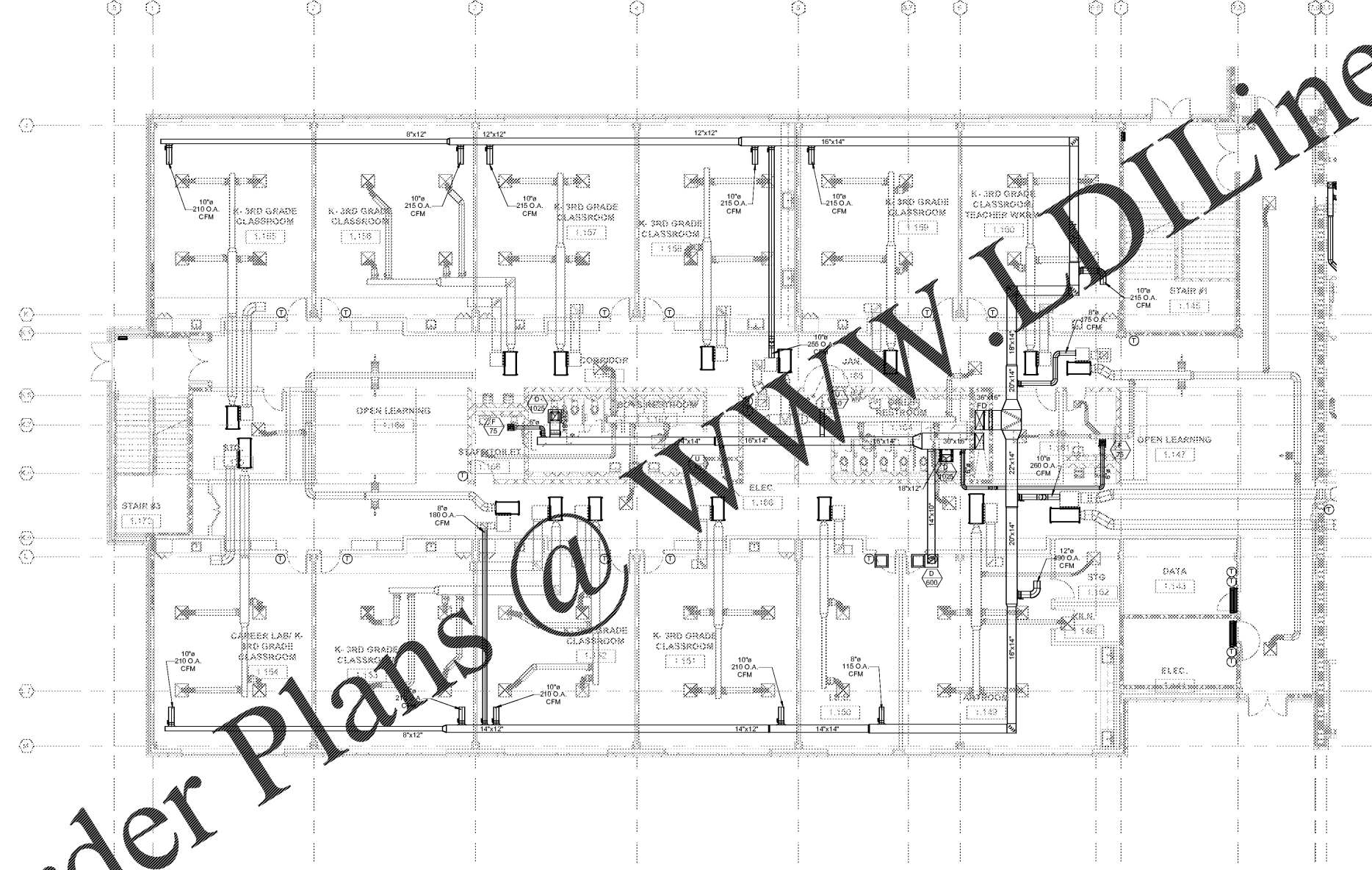


Order Plans @ www.wldline.com



1 LEVEL 01 PART B - HVAC ERU
SCALE = 1/4"

REV. NO.	DATE	REMARKS
00015		ISSUE FOR SET PERMIT / OCE



MATHESON-BALL & ASSOCIATES, INC.
REGISTERED PROFESSIONAL ENGINEERS
STATE OF GEORGIA
MEMBER IN GOOD STANDING

Smallwood, Reynolds, Stewart, Stewart & Associates, Inc. Architects

LEVEL 01 PART B - HVAC ERU
J.H. HOUSE ELEMENTARY SCHOOL
3100 Zingira Road NE, Conyers, GA 30012

DATE
JOB NO. **218036.00**
SHEET NO.
M2-01.B

MBA # 18033
MATHESON-BALL & ASSOCIATES, INC.
11385 ELKINS RD., SUITE F3
ROSWELL, GEORGIA 30074
PHONE: (770) 751-0773
WWW.MATHESONBALL.COM

One Piedmont Center, Suite 303 3565 Piedmont Road Atlanta, Georgia 30305

ISSUED FOR CONSTRUCTION