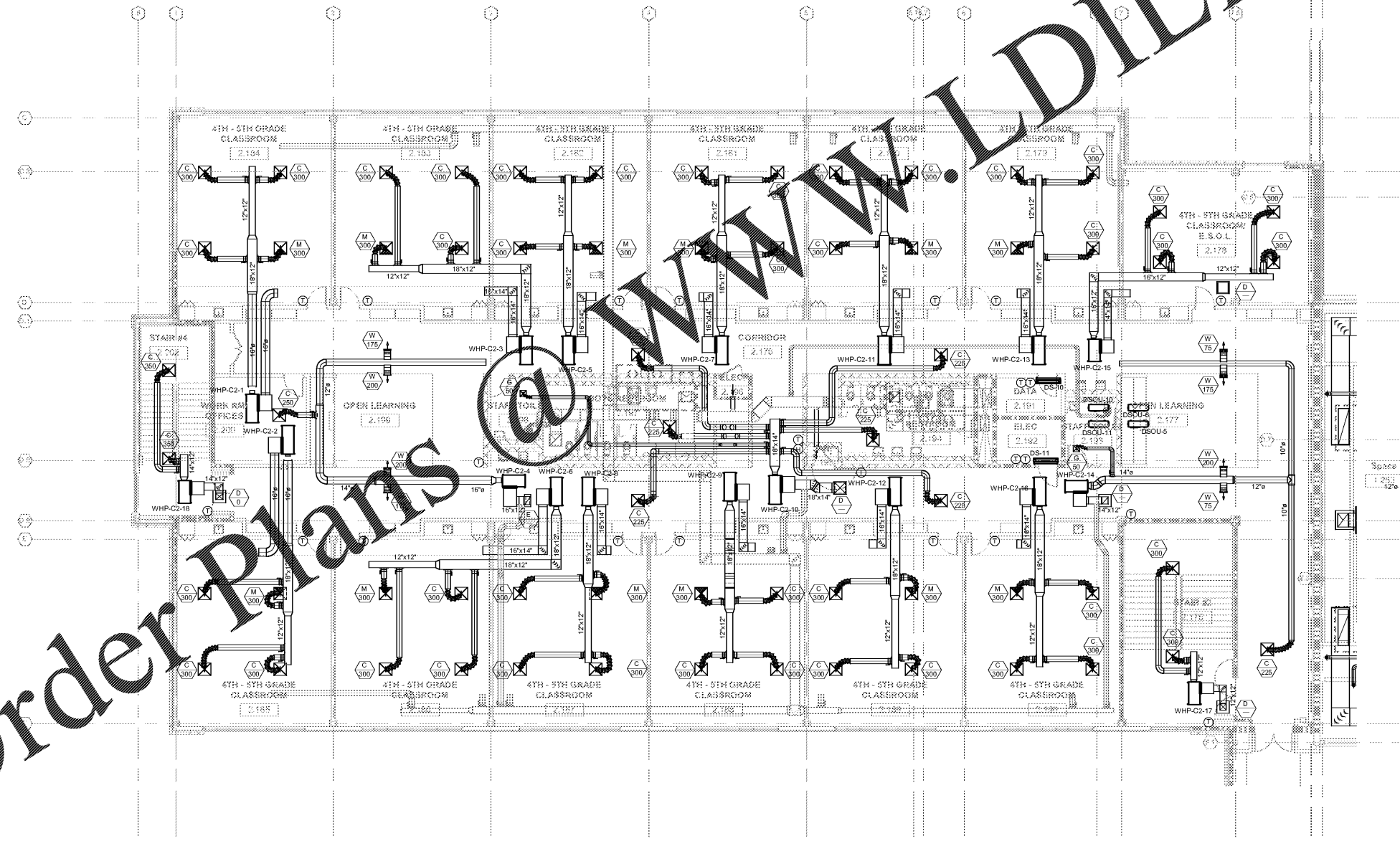


Order Plans @ WWW.LDILine.com

① LEVEL 2 PART C - HVAC
1/8" = 1'-0"



MBA
CONSULTING
ENGINEERS

MBA# 18033
MATHESON-BALL & ASSOCIATES, INC.
11285 ELKINS RD, SUITE F3
ROSWELL, GEORGIA 30076
PHONE: (770) 751-0773
WWW.MATHESONBALL.COM

Smallwood, Reynolds, Stewart, Stewart & Associates, Inc. Architects

One Piedmont Center, Suite 303 3565 Piedmont Road Atlanta, Georgia 30305

LEVEL 02 PART C - HVAC

J.H. HOUSE ELEMENTARY SCHOOL
3100 Zingira Road NE, Conyers, GA 30012

DATE: _____

JOB NO: **218036.00**

SHEET NO: **M1-02.C**

ISSUED FOR CONSTRUCTION

REVISIONS / PRINTED

REV. NO.	DATE	REMARKS
00/00	00/00	DATE CHECK SET
00/00	00/00	ISSUE FOR BID / PERMIT / CLOSE

RCPS

GEORGIA

REGISTERED PROFESSIONAL ENGINEER
STATE OF GEORGIA
NO. 10000
MATHESON-BALL & ASSOCIATES, INC.