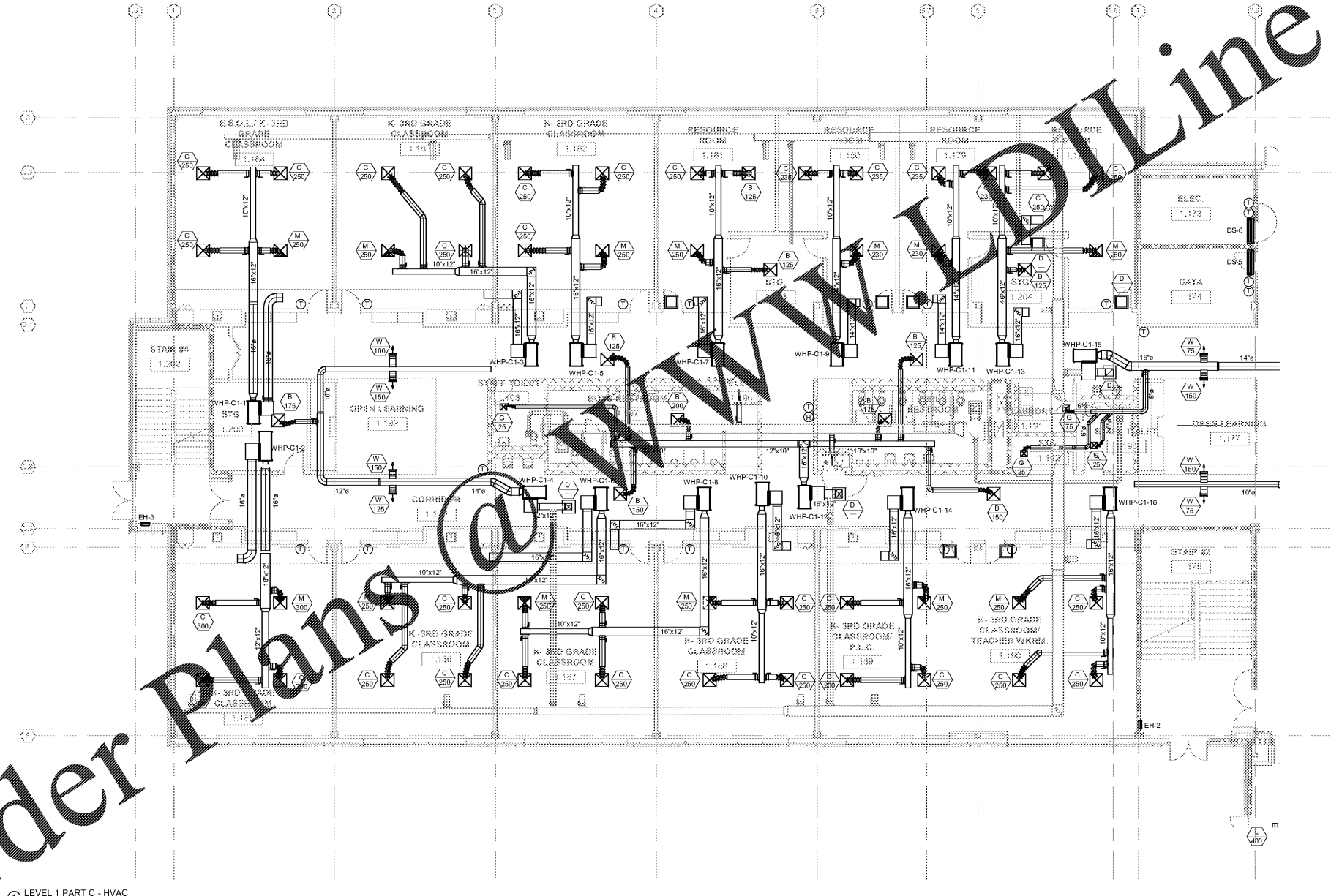


Order Plans @ www.WWVLine.com



1 LEVEL 1 PART C - HVAC
1/8" = 1'-0"

REV. NO.	DATE	REMARKS
00/00		ISSUE FOR SET
00/00		ISSUE FOR BID / PERMIT / CLOSE

Smallwood, Reynolds, Stewart & Associates, Inc. Architects



STEWART & ASSOCIATES, INC.
REGISTERED PROFESSIONAL ENGINEERS
MEMBER OF THE NATIONAL ARCHITECTURAL ASSOCIATION

One Piedmont Center, Suite 303 3565 Piedmont Road Atlanta, Georgia 30305

LEVEL 01 PART C - HVAC
J.H. HOUSE ELEMENTARY SCHOOL
3100 Zingira Road NE, Conyers, GA 30012

MBA CONSULTING ENGINEERS
MBA # 18033
MATHESON-BALL & ASSOCIATES, INC.
11285 ELKINS RD, SUITE F-3
ROSWELL, GEORGIA 30074
PHONE: (770) 751-0773
WWW.MATHESONBALL.COM

DATE	
JOB NO.	218036.00
SHEET NO.	M1-01.C

ISSUED FOR CONSTRUCTION