

B.5

7' - 8"

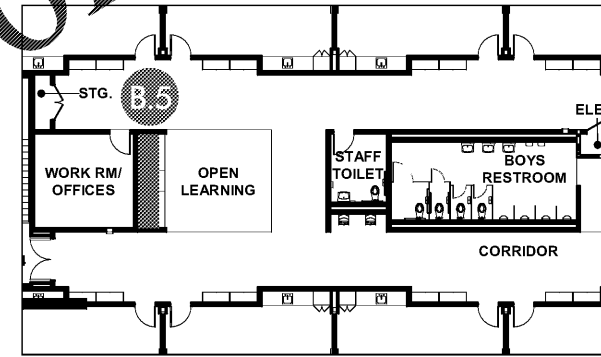


LINEAR METAL  
CEILING (ALIGNED  
W. SOFFIT)  
by others per Interior  
Design spec.

CARPETED STAIR  
SEATING  
by others per Interior  
Design spec.

## B Open Learning Graphics

### LOCATION PLAN



### MATERIALS

- 1 Custom vinyl wallcovering printed on DreamScape Suede
- 2 Typical 6" base (by others per Interior Design spec.); Refer to architectural drawings. Wallcovering to be installed behind base.

**NOTE:** Wallcovering should be installed based on center and then top edge. 2", in addition to 1.5" bleed, provided along bottom of layout to continue behind base.