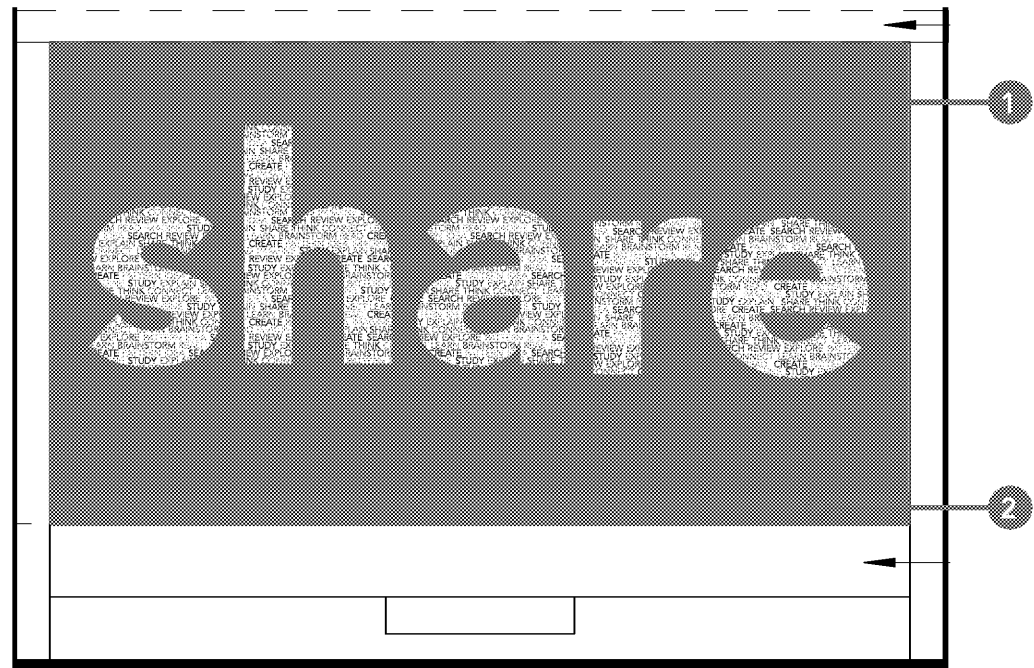
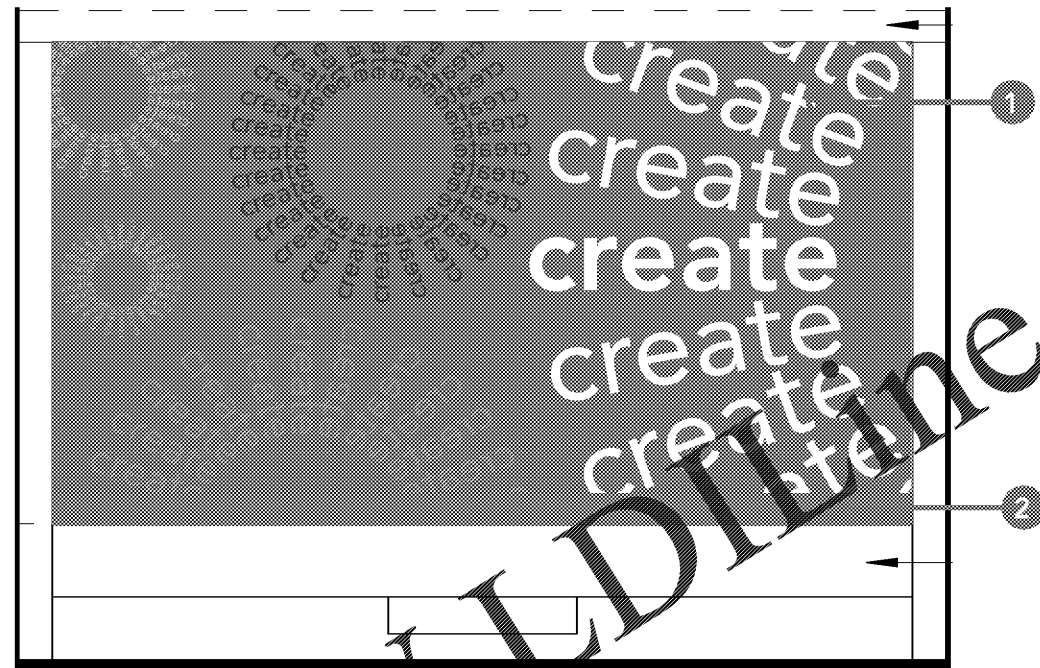


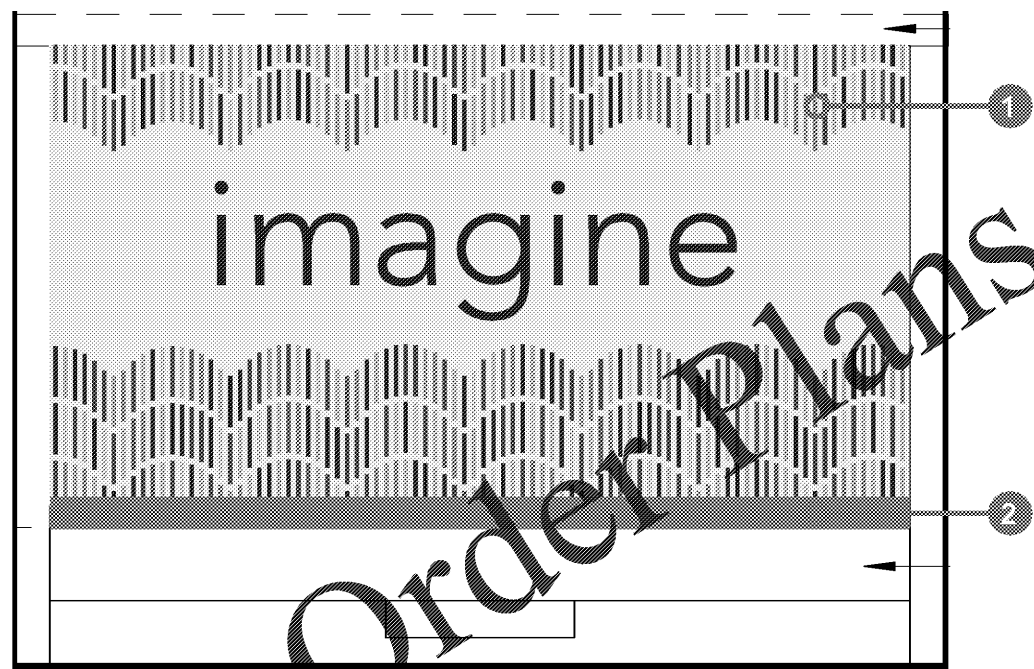
B.2



B.3



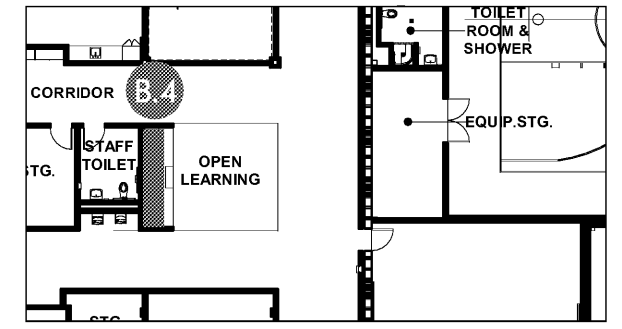
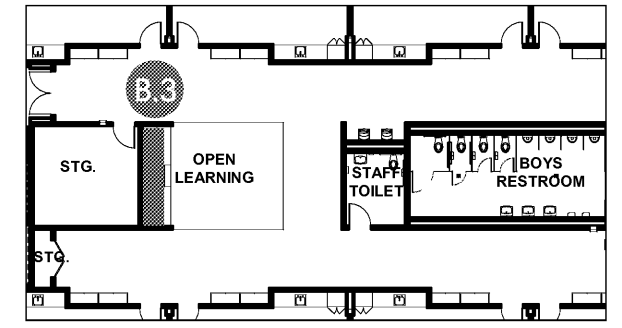
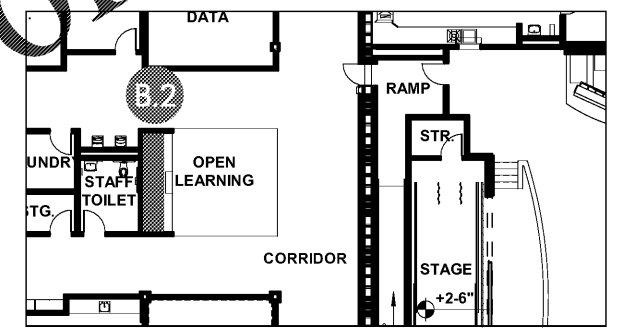
B.4



NOTE: Wallcovering should be installed based on center and then top edge. 2", in addition to 1.5" bleed, provided along bottom of layout to continue behind base.

B Open Learning Graphics

LOCATION PLAN



MATERIALS

- 1 Custom vinyl wallcovering printed on DreamScape Suede
- 2 Typical 6" base (by others per Interior Design spec.); Refer to architectural drawings. Wallcovering to be installed behind base.