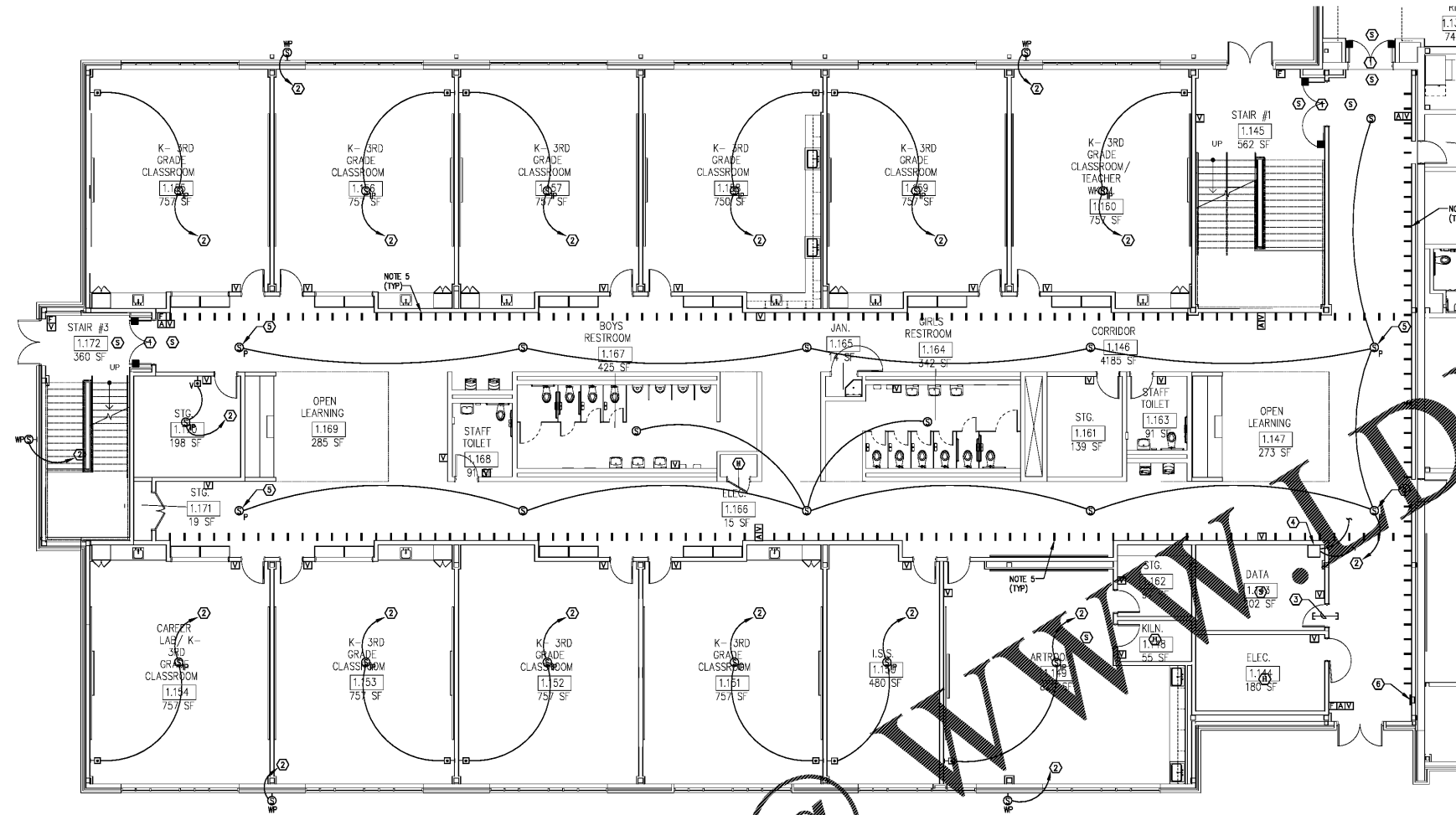


Order Plans @ www.dline.com



1 LEVEL 01 PART B - SYSTEMS PLAN
E3-01.B 1/8" = 1'-0"

- NOTES:**
- ALL SYSTEMS CABLING SHALL BE PLENUM RATED. REFER TO SPECIFICATIONS FOR ADDITIONAL CABLING REQUIREMENTS.
 - ALL PLENUM RATED SYSTEMS CABLING INSTALLED IN WALLS SHALL BE INSTALLED IN CONDUIT. PROVIDE JUNCTION BOX ABOVE CEILING, AND ROUTE CABLING IN CONDUIT FROM JUNCTION BOX DOWN TO FLUSH DEVICE BOX.
 - ALL SYSTEMS CABLING INSTALLED EXPOSED (IN AREAS WITHOUT CEILINGS) SHALL BE ROUTED IN CONDUIT. THIS DOES NOT APPLY TO AREAS OF CORRIDORS WITHOUT CEILINGS OR CLASSROOMS WHERE PORTIONS OF THE CEILING SPACE ARE EXPOSED. IN THESE AREAS, CABLING MAY REMAIN EXPOSED, BUT SHALL BE NEATLY BUNDLED AND SUPPORTED IN CABLE HANGERS OR SIMILAR.
 - WHERE CABLING PASSES THROUGH WALLS INTO INDIVIDUAL ROOMS, PROVIDE 3" SLEEVES THROUGH THE WALL WITH BUSHINGS ON EACH END. FIRE STOP SLEEVES AFTER ALL CABLING IS INSTALLED. SLEEVES SHALL BE INSTALLED ABOVE THE DOOR TO THE ROOM. THIS APPLIES TO ALL ROOMS.
 - CABLE HANGER MOUNTED ABOVE CEILING. SEE DETAIL 1, SHEET E3-01.
 - SEE ARCHITECTURAL EXTERIOR ELEVATIONS FOR EXACT LOCATIONS OF EXTERIOR WALL MOUNTED DEVICES.

- KEYNOTES:**
- PROVIDE WALL MOUNTED DOOR HOLDERS AND SMOKE DETECTORS. COORDINATE EXACT LOCATION WITH ARCHITECT PERIOD TO ROUGH-IN. WHERE A MANUFACTURER USES A LOW VOLTAGE TRANSFORMER TO CONTROL AND OPERATE THE DOOR HOLDERS, MOUNT TRANSFORMER ABOVE CEILING IN NEARLY 1' CLEARANCE WITHIN FOUR FEET OF DOORS. SMOKE DETECTORS SHALL BE MOUNTED WITHIN FIVE FEET OF THE DOOR OPENING.
 - ROUTE PLENUM RATED CAT 6 INTERCOM CABLING IN CABLE HANGERS ABOVE CORRIDOR CEILINGS TO THE WALL MOUNTED INTERCOM RACK IN DATA ROOM 1.143.
 - PROVIDE (3) 3" SLEEVES THROUGH WALL ABOVE CEILING FOR INSTALLATION OF PLENUM RATED CABLING. PROVIDE BUSHINGS ON EACH END OF SLEEVES. FIRE STOP SLEEVES AFTER ALL CABLING IS INSTALLED.
 - WALL MOUNTED INTERCOM RACK. COORDINATE LOCATION WITH THE OWNER'S DATA INSTALLERS TO ENSURE ADEQUATE SPACE FOR THE DATA RACK INSTALLATION. INTERCONNECT THE INTERCOM RACKS IN THE ROOF AND IN THE FIVE DATA ROOMS WITH 6-STRAND MULTI-MODE, 10-26 PLENUM RATED FIBER OPTIC CABLE TO FORM A LOOP FROM ROOM TO ROOM. FIBER OPTIC CABLE SHALL BE INSTALLED IN 1" CONDUIT ROUTED IN THE SLAB.
 - PENDANT MOUNT SPEAKER AT 10'-0" AFF TO BOTTOM.
 - FLUSH MOUNTED LCD TYPE FIRE ALARM ANNUNCIATOR PANEL. ROUTE SIGNAL CABLING IN 1" CONDUIT TO THE FIRE ALARM CONTROL PANEL IN RECEPTION 1.103. SEE E3-01.A.

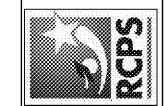
- INTERCOM NOTES:**
- PRIOR TO ORDERING INTERCOM SPEAKERS, CONFIRM CEILING TYPE (GRID, GYP BOARD, OPEN STRUCTURE) WITH THE ARCHITECT'S REFLECTED CEILING PLAN. ORDER THE CORRECT TYPE OF SPEAKER FOR THE CEILING IN/ON WHICH IT WILL BE INSTALLED IN EACH SPACE.

- FIRE ALARM NOTES:**
- FIRE ALARM CABLING ROUTED FROM THIS WING BACK TO THE FACP IN RECEPTION 1.103 SHALL BE ROUTED IN CONDUIT IN THE SLAB IN ORDER TO MINIMIZE OVERHEAD CONDUIT RUNS IN PART A. CABLING INSTALLED WITHIN THIS WING CAN BE INSTALLED OVERHEAD IN CABLE HANGERS.
 - FIRE ALARM CABLING INSTALLED IN CONDUIT IN THE SLAB SHALL BE AQUASEAL OR EQUAL.

REV. NO.	DATE	REVISIONS / PRINTED
06/16/19	06/16/19	ISSUED FOR PERMIT/ADDC
10/01/19	10/01/19	ISSUED FOR PERMIT/ADDC

INSTRUCTIONAL UNITS	REVISIONS / PRINTED
REGULAR CLASSROOMS	45
PAIRED FLEX AREAS	2
MUSICAL EDUCATION	1
MEDIA CENTER	1
ART	1
TOTAL	51

BUILDING AREA	COVERED AREAS
LEVEL 01	7,142 SF
TOTAL	10,837 SF
COVERED AREAS	5,180 SF
UNCOVERED AREAS	5,657 SF
TOTAL	10,837 SF



STEWART & ASSOCIATES, INC.
REGISTERED PROFESSIONAL ENGINEER
NO. 22706
STATE OF GEORGIA
EXPIRES 12/31/2024

One Piedmont Center, Suite 303 3565 Piedmont Road Atlanta, Georgia 30305

Smallwood, Reynolds, Stewart, Stewart & Associates, Inc. Architects

LEVEL 01 PART B - SYSTEMS PLAN
J.H. HOUSE ELEMENTARY SCHOOL
3100 Zingara Road NE, Conyers, GA 30012
DATE: 10-01-2019
JOB NO: 218036.00
SHEET NO: E3-01.B

ISSUED FOR CONSTRUCTION