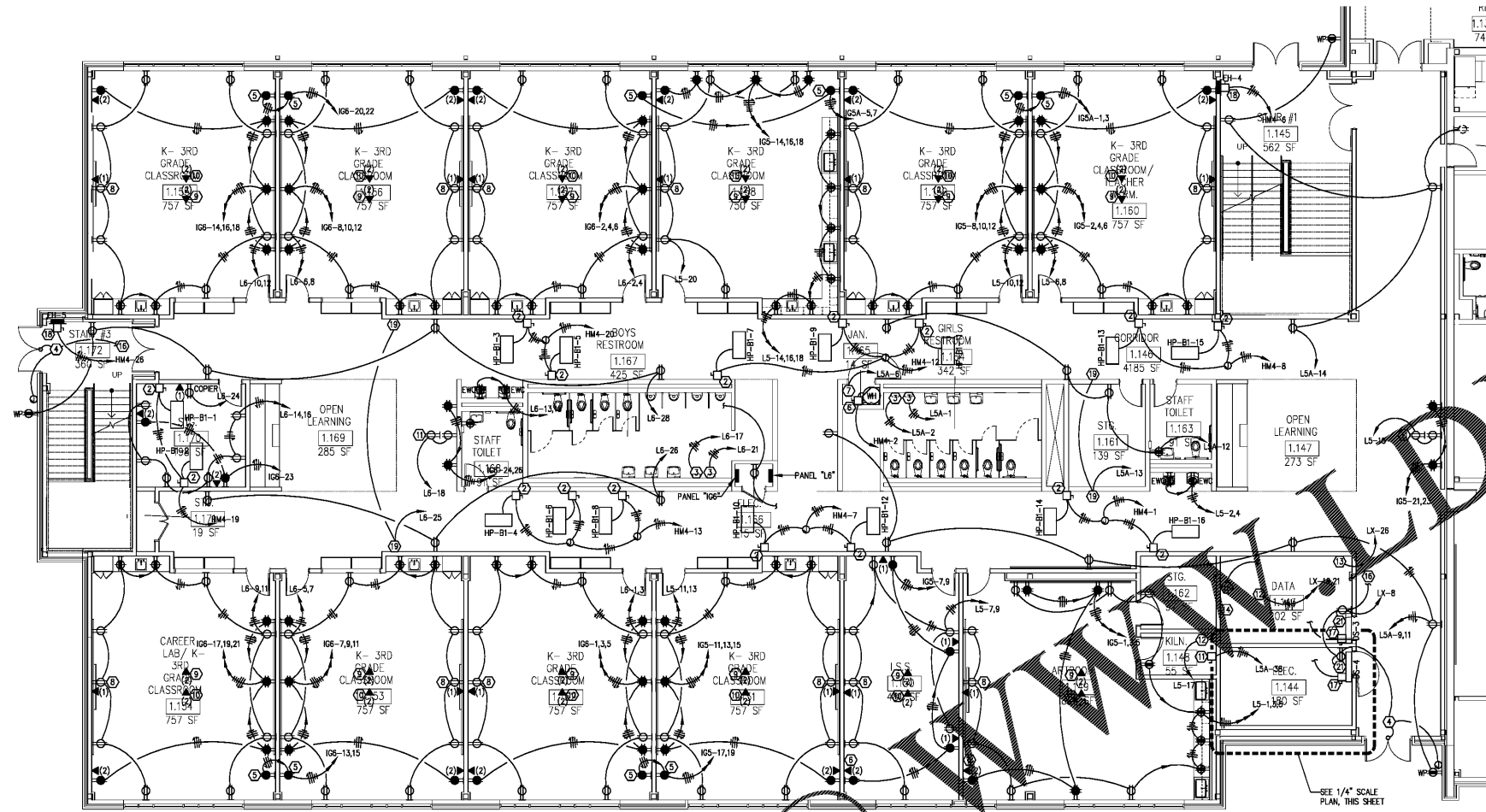
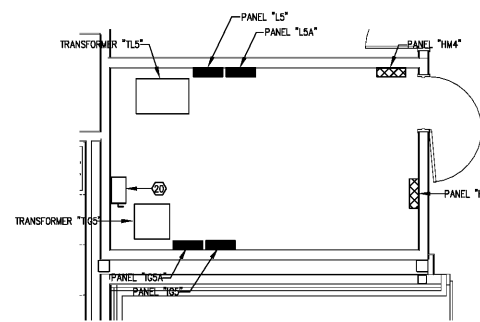


Order Plans



1 LEVEL 01 PART B - POWER/SIGNAL PLAN
E1-01.B 1/8" = 1'-0"



2 ELECTRICAL ROOM 1.144
E1-01.B 1/4" = 1'-0"

NOTES:

- PROVIDE FUSES IN ALL DISCONNECT SWITCHES SERVING MECHANICAL EQUIPMENT AND INDICATED AS "FUSE". FUSES SHALL BE SIZED FOR THE MAXIMUM FUSE SIZE RATING IN THE NAMEPLATE DATA.
- COORDINATE EXACT LOCATIONS OF MECHANICAL EQUIPMENT WITH MECHANICAL CONTRACTOR PRIOR TO ROUGH-IN.
- ALL CONDUITS ROUTED IN CORRIDOR CEILING SPACE SHALL BE ROUTED ABOVE MECHANICAL EQUIPMENT AND OUT OF THE UNIT ACCESS SPACES.
- CONDUITS SERVING MECHANICAL EQUIPMENT IN THE CEILING SPACE SHALL BE ROUTED FROM THE REAR SIDE OF THE DISCONNECT SWITCH UP TO STRUCTURE AND ACROSS TO ABOVE THE MECHANICAL EQUIPMENT WITH A FLEXIBLE CONNECTION DOWN TO THE UNIT.
- REFER TO MECHANICAL PLANS FOR LOCATIONS OF THERMOSTATS. PROVIDE SINGLE GANG BOX AT EACH LOCATION, EITHER HORIZONTALLY OR VERTICALLY MOUNTED. COORDINATE WITH THE MECHANICAL CONTRACTOR. ROUTE 1/2" CONDUIT WITH PULL WIRE FROM THE BOX TO THE THERMOSTAT CONTROLLED BY THE THERMOSTAT (AS INDICATED ON THE MECHANICAL PLANS).
- REFER TO KEYNOTES IN EACH OF FIVE DATA ROOMS FOR FIBER OPTIC CABLE REQUIREMENTS BETWEEN THE MDF ROOM AND EACH DATA ROOM.
- DATA CABLEING ROUTED TO THE MDF OR DATA ROOMS SHALL BE LEFT WITH A 30-FOOT SERVICE LOOP AT STRUCTURE. LABEL EACH END OF EACH CABLE WITH PRE-PRINTED VINYL LABELS, BRADY OR EQUAL, USING A NUMBERING OR LABELING SCHEME DETERMINED BY THE OWNER.
- THE DEVICES ARE TO BE GROUPED TOGETHER. IF THE PLAN, THEY SHALL BE INSTALLED GROUPED TOGETHER.

KEYNOTES:

- 1/1P/FUSE DISCONNECT SWITCH MOUNTED ABOVE CEILING.
- 30A/3P/FUSE DISCONNECT SWITCH MOUNTED ABOVE CEILING.
- MAKE CONNECTION TO ELECTRIC HAND DRYER. COORDINATE EXACT LOCATION WITH ARCHITECT PRIOR TO ROUGH-IN.
- PROVIDE JUNCTION BOX ABOVE THE CEILING FOR POWER TO THE CARD READER CONTROLLER. ROUTE 3/4" CONDUIT DOWN TO A SINGLE GANG DEVICE BOX FLUSH MOUNTED ON THE EXTERIOR WALL FOR THE SCANNER. ROUTE A SECOND 3/4" CONDUIT INTO THE DOOR FRAME FOR LATCH RELEASE.
- OUTLET FOR IPAD CHARGING STATION.
- 30A/1P/FUSE DISCONNECT SWITCH.
- PROVIDE SINGLE POLE MANUAL STARTER AND MAKE CONNECTION TO CIRCULATION PUMP.
- DUPLEX RECEPTACLE AND DATA OUTLET AT THE FLAT PANEL DISPLAY SHALL BE MOUNTED HIGH ON THE WALL BEHIND THE DISPLAY. SEE FRONT OF CLASSROOM ELEVATION, SHEET E5-01.
- PROVIDE TWO 12-FOOT COILS OF CAT 6E DATA CABLEING IN A 6"x6" BOX AT STRUCTURE FOR OWNER'S CONNECTION TO WIRELESS ACCESS POINT. PROVIDE BOX WITH 3/4" BUSHED OPENING FOR ROUTING CABLEING TO ANTENNA.
- PROVIDE TWO 12-FOOT COILS OF CAT 6E DATA CABLEING IN A 6"x6" BOX AT STRUCTURE FOR FUTURE CAMERA. PROVIDE BOX WITH 3/4" BUSHED OPENING FOR ROUTING CABLEING TO CAMERA.
- MOUNT ONE DUPLEX RECEPTACLE AT NORMAL OUTLET HEIGHT AND THE OTHER HIGH ON THE WALL BEHIND THE DISPLAY. COORDINATE MOUNTING HEIGHT OF THE DISPLAY OUTLET WITH THE OWNER PRIOR TO ROUGH-IN.
- PROVIDE TWO CIRCUITS, EACH WITH A DEDICATED NEUTRAL CONDUCTOR, FOR USE BY THE OWNER'S DATA INSTALLERS. PROVIDE ALLOWANCE IN BID TO EXTEND AND TERMINATE THE CIRCUITS AS DIRECTED BY THE DATA INSTALLERS.
- MAKE CONNECTION TO WALL MOUNTED INTERCOM RACK. PROVIDE RECEPTACLE AT RACK HEIGHT OR HARD-WIRED CONNECTION AS REQUIRED.
- PROVIDE 8-FOOT COIL OF #6 COPPER GROUND WIRE AT THE FLOOR IN THE MDF AND DATA ROOMS. EXTEND CONDUCTOR IN 1/2" CONDUIT UP TO STRUCTURE AND BOND.
- PROVIDE 8-STRAND SINGLE MODE, 10-GIG PLENUM RATED FIBER CABLE FROM THE DATA ROOM TO MDF 2.12B. ROUTE CABLE IN 1" CONDUIT INSTALLED IN THE SLAB. PROVIDE A 30-FOOT SERVICE LOOP AT EACH END OF THE CABLE FOR USE BY THE OWNER'S DATA INSTALLER.
- EXTEND TO RECEPTACLE IN ELECTRICAL ROOM 1.166.
- PROVIDE A 30A/2P/FUSE DISCONNECT SWITCH MOUNTED HIGH ON THE WALL OR ABOVE THE CEILING. ROUTE CONDUIT DOWN IN WALL AND MAKE CONNECTION TO THE DUCTLESS SPLIT FAN COIL UNIT. FAN COIL IS POWERED FROM THE ROOF TOP HEAT PUMP (RTHP). ROUTE #12 CONDUCTORS AS DIRECTED BY THE MANUFACTURER IN 1/2" CONDUIT TO THE ASSOCIATED DUCTLESS SPLIT OUTDOOR UNIT.
- PROVIDE 30A/1P/FUSE DISCONNECT SWITCH MOUNTED HIGH ON WALL. ROUTE FEEDER IN WALL DOWN TO ELECTRIC HEATER AND MAKE CONNECTION.
- PROVIDE JUNCTION BOX ABOVE THE CEILING FOR POWER TO PLUMBING TRAP PRIMERS. LOW VOLTAGE TRANSFORMERS AND CIRCUITING OF THE TRAP PRIMERS TO BE BY THE MECHANICAL CONTROLS CONTRACTOR. LABEL THE JUNCTION BOX COVER WITH THE CIRCUIT NUMBER AND "TRAP PRIMERS".
- DISCONNECT SWITCH AT PRIMARY OF TRANSFORMER "INGS". SEE RISER DIAGRAM.
- ROUTE CIRCUIT CONCEALED IN WALL FROM THE OUTLET TO A SINGLE POLE MANUAL STARTER ADJACENT TO THE DUCTLESS SPLIT FAN COIL UNIT. EXTEND CIRCUIT FROM THE LOAD SIDE OF THE MANUAL STARTER AND MAKE CONNECTION TO THE CONDENSATE PUMP.

REV. NO.	DATE	REVISIONS / PRINTED
06/16/19	06/16/19	ISSUED FOR BID/PERMIT/ADDC
10/01/19	10/01/19	ISSUED FOR BID/PERMIT/ADDC

REVISIONS / PRINTED	DATE	REMARKS
45		
2		
1		
51		

BUILDING AREA	LEVEL 01	TOYAL	COVERED AREAS (ALE CANOBERES)	ISSUED FOR BID/PERMIT/ADDC	ALST	TOTAL
INSTRUCTIONAL UNITS						
REGULAR CLASSROOMS	71,452 SF					
PAIRED FLEX AREAS	10,837 SF					
MUSICAL EDUCATION						
MEDIA EDUCATION						
MEDIA CENTER						
COVERED AREAS (ALE CANOBERES)	82,289 SF					
ISSUED FOR BID/PERMIT/ADDC	82,289 SF					
ALST						
TOTAL	82,289 SF					



PROJECT SUMMARY
 NAME: J.H. HOUSE ELEMENTARY SCHOOL
 GRADES: PREK THRU 5TH
 G.D.C.E.# TO BE ASSIGNED

RCPS

DATE: 10-01-2019
 JOB NO: 218036.00
 SHEET NO: E1-01.B

Smallwood, Reynolds, Stewart, Stewart & Associates, Inc. Architects
 One Piedmont Center, Suite 303 3565 Piedmont Road Atlanta, Georgia 30305

ISSUED FOR CONSTRUCTION