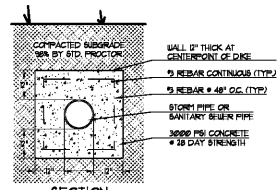
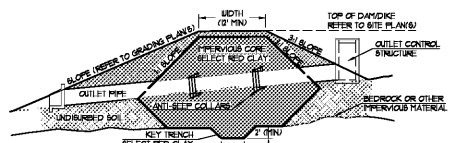


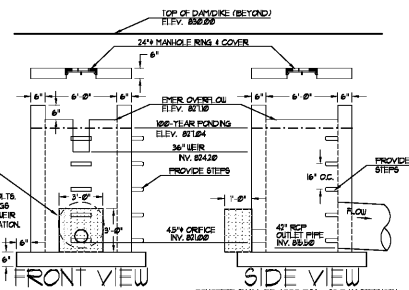
**1 COOLING TOWER DRAIN**  
NOT TO SCALE



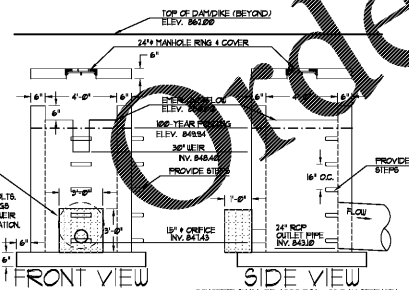
**2 CONCRETE CUT-OFF WALL**  
NOT TO SCALE



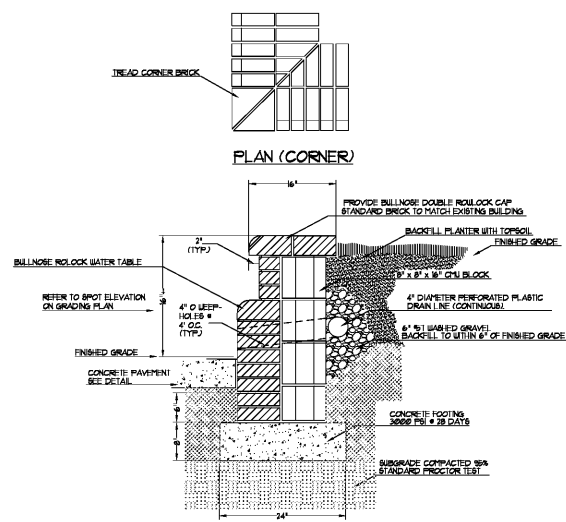
**3 DETENTION BASIN DAM/DIKE**  
NOT TO SCALE



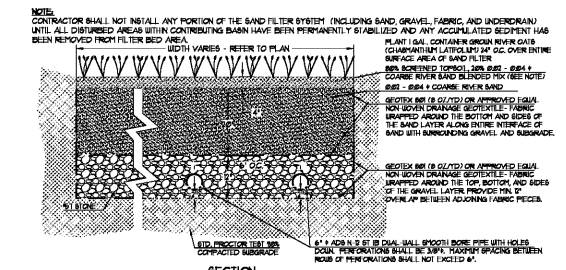
**4 OUTLET CONTROL STRUCTURE FOR POST 1A SMC**  
NOT TO SCALE



**5 OUTLET CONTROL STRUCTURE FOR POST 1B SMC**  
NOT TO SCALE



**6 BRICK SEAT WALL DETAIL**  
NOT TO SCALE



**7 SAND FILTER**  
NOT TO SCALE

**NOTES:**  
1. CONTRACTOR SHALL NOT INSTALL ANY PORTION OF THE SAND FILTER SYSTEM (INCLUDING SAND, GRAVEL, FABRIC AND UNDERDRAIN) UNTIL ALL DISTURBED AREAS WITHIN CONTRIBUTING BASIN HAVE BEEN PERMANENTLY STABILIZED AND ANY ACCUMULATED SEDIMENT HAS BEEN REMOVED FROM FILTER BED AREA.  
2. WIDTH VARIES - REFER TO PLAN.  
3. SEE EROSION CONTROL PLAN FOR LAYOUT, CLEARANCES, AND OUTLET CONNECTION POINTS.  
4. PERFORATED SMALL LINES SHALL BE 1/2\"/>

**NOTES:**  
1. CONTRACTOR SHALL CONNECT ONE END OF PERFORATED DRAIN LINES TO SOLID ADS-N-2 OUTLET LINE. CONTRACTOR SHALL PROVIDE SOLID ADS-N-2 PIPE EXTENDING TO CLEARANCE AT THE OPERATING END OF THE PERFORATED DRAIN LINES.  
2. SEE EROSION CONTROL PLAN FOR LAYOUT, CLEARANCES, AND OUTLET CONNECTION POINTS.  
3. ALL UNDERDRAINS SHALL HAVE CLEARANCE AT OPPOSITE END OF UNDERDRAIN FROM THE OUTLET CONTROL SYSTEM. ALL CLEARANCES SHALL BE CONFORMING SWAMP CAPS WITH 1/2\"/>

REV. NO.	DATE	REVISIONS / PRINTED
1	04/05/19	0000 PRELIMINARY
2	08/08/19	0010 PACKAGE
3	08/16/19	0000 CHECK SET

INSTRUCTIONAL UNITS	REGULAR CLASSROOMS	REGULAR TUTORING	MUSIC	PHYSICAL EDUCATION	ART	TOTAL
45	4	1	1	1	1	81

BUILDING AREA	LEVEL 01	LEVEL 02	TOTAL	COVERED AREAS (I.E. CANOPIES)	COVERED AREAS (I.E. CANOPIES)	TOTAL
71,159 SF	37,237 SF	10,637 SF	47,874 SF	5,186 SF	5,186 SF	53,060 SF

PROJECT SUMMARY	PROJECT NAME	PROJECT LOCATION	PROJECT TYPE	PROJECT STATUS
REGULAR CLASSROOMS	STEWART & ASSOCIATES, INC.	ATLANTA, GEORGIA	ARCHITECTS	CONSTRUCTION



STEWART & ASSOCIATES, INC.  
ARCHITECTS  
1000 ZINGIRA ROAD NE, CONYERS, GA 30012  
PH: 770-932-1111  
WWW.STEWARTANDASSOCIATES.COM

**SITE WORK CONSTRUCTION DETAILS**  
J.H. HOUSE ELEMENTARY SCHOOL  
3100 Zingira Road NE, Conyers, GA 30012

DATE: \_\_\_\_\_  
JOB NO. **218036.00**  
SHEET NO. \_\_\_\_\_  
**C701**

**BREEDLOVE LAND PLANNING**  
Landscape Architects • Civil Engineers  
www.landplanning.net  
B.L.P. JOB # 18151

**24-HR CONTACT INFORMATION**  
**BRUCE STUART**  
OWNER/PRIMARY PERMITTEE  
ROCKDALE CO. PUBLIC SCHOOLS  
678-873-7942

ISSUED FOR CONSTRUCTION