

GSWCC REQUIRED NOTES

THE DESIGN PROFESSIONAL WHO PREPARED THE ES&PC PLAN IS TO INSPECT THE INSTALLATION OF THE INITIAL SEDIMENT STORAGE REQUIREMENTS AND PERMITTER CONTROL BMP'S WITHIN 10 DAYS AFTER INSTALLATION.

NON-ES&PC ACTIVITIES SHALL NOT BE CONDUCTED WITHIN THE 25 OR 50-FOOT UNDISTURBED BUFFER AREAS AS REQUIRED FROM THE POINT OF UNDISTURBED VEGETATION OR WITHIN 25 FEET OF THE CORRAL FENCE AND BUFFER AS REQUIRED FROM THE JURISDICTIONAL DETERMINATION LINE WITHOUT FIRST ACQUIRING THE NECESSARY VARIANCES AND PERMITS.

ADJUSTMENTS / REVISIONS TO THE ES&PC PLAN WHICH HAVE A SIGNIFICANT EFFECT ON BMP'S WITH A HYDRAULIC COMPONENT MUST BE CERTIFIED BY THE DESIGN PROFESSIONAL.

WASTE MATERIALS SHALL NOT BE DISCHARGED TO WATERS OF THE STATE, EXCEPT AS AUTHORIZED BY A REGION 4A PERMIT.

THE ESCAPE OF SEDIMENT FROM THE SITE SHALL BE PREVENTED BY THE INSTALLATION OF EROSION AND SEDIMENT CONTROL MEASURES AND PRACTICES PRIOR TO LAND DISTURBING ACTIVITIES.

EROSION CONTROL MEASURES WILL BE MAINTAINED AT ALL TIMES. FULL IMPLEMENTATION OF THE APPROVED PLAN DOES NOT PROVIDE FOR EFFECTIVE EROSION CONTROL. ADDITIONAL EROSION AND SEDIMENT CONTROL MEASURES SHALL BE IMPLEMENTED TO CONTROL OR TREAT THE SEDIMENT SOURCE.

ANY DISTURBED AREA LEFT EXPOSED FOR A PERIOD GREATER THAN 14 DAYS SHALL BE STABILIZED WITH MULCH OR TEMPORARY SEEDING.

16 17 18 19 20

SPILL PREVENTATION & CONTROL

- LOCAL STATE / MANUFACTURER'S RECOMMENDED METHODS FOR SPILL CLEANUP WILL BE CLEARLY POSTED. PROCEDURES WILL BE MADE AVAILABLE TO SITE PERSONNEL.
- MATERIAL & EQUIPMENT NECESSARY FOR SPILL CLEANUP WILL BE KEPT IN THE MATERIAL STORAGE AREA. TYPICAL MATERIALS & EQUIPMENT INCLUDES, BUT IS NOT LIMITED TO: EROSION DISTURBANCE BAGS, GULLIES, GULLIES, CAT LITTER, BAND, BANDS, PROPERLY LABELED PLASTIC / METAL WASTE CONTAINERS.
- SPILL PREVENTION PRACTICES & PROCEDURES WILL BE REVIEWED AFTER A SPILL IS ACCIDENTALLY NECESSARY TO PREVENT FUTURE SPILLS.
- ALL SPILLS WILL BE CLEARLY DOCUMENTED. ALL SPILLS WILL BE REPORTED AS REQUIRED BY LOCAL, STATE, & FEDERAL REGULATIONS.
- FOR SPILLS THAT IMPACT SURFACE WATERS OR SUBSURFACE WATERS, THE NATIONAL RESPONSE CENTER (NRC) WILL BE CONTACTED WITHIN 24 HOURS AT 1-800-426-7676.
- FOR SPILLS OF AN UNKNOWN AMOUNT, THE NATIONAL RESPONSE CENTER (NRC) WILL BE CONTACTED WITHIN 24 HOURS AT 1-800-426-7676.
- FOR SPILLS GREATER THAN 55 GALLONS AND SURFACE WATER IMPACTS OCCUR, THE GEORGIA EPD WILL BE CONTACTED WITHIN 24 HOURS.
- FOR SPILLS LESS THAN 55 GALLONS AND NO SURFACE WATER IMPACTS OCCUR, THE SPILL WILL BE CLEARED UP & LOCAL AGENCIES WILL BE CONTACTED AS REQUIRED.

THE CONTRACTOR SHALL NOTIFY THE LICENSED PROFESSIONAL WHO PREPARED THIS PLAN IN WRITING (USE 100 GALLONS OF PETROLEUM OIL) THIS INCLUDES CAPACITY OF EQUIPMENT) OR IF ANY ONE PIECE OF EQUIPMENT HAS A CAPACITY GREATER THAN 100 GALLONS THE CONTRACTOR WILL NEED A SPILL PREVENTION CONTAINER & CONTAINER MEASURES PLAN PREPARED BY THE LICENSED PROFESSIONAL.

INITIAL EROSION INSPECTION

THE DESIGN PROFESSIONAL WHO PREPARED THE ES&PC PLAN IS TO INSPECT THE INSTALLATION OF THE INITIAL SEDIMENT STORAGE REQUIREMENTS AND PERMITTER CONTROL BMP'S WITHIN 10 DAYS AFTER INSTALLATION.

THE PRIMARY PERMITTEE MUST RETAIN THE DESIGN PROFESSIONAL WHO PREPARED THE PLAN EXCEPT WHEN THE PRIMARY PERMITTEE HAS REQUESTED IN WRITING AND EPD HAS AGREED TO AN ALTERNATE DESIGN PROFESSIONAL TO INSPECT THE INITIAL SEDIMENT STORAGE REQUIREMENTS AND PERMITTER CONTROL BMP'S.

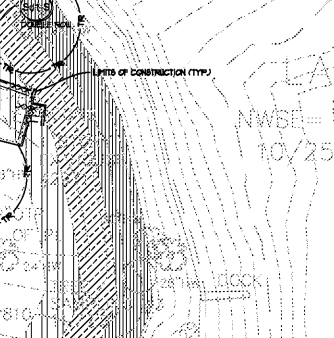
THE DESIGN PROFESSIONAL SHALL DETERMINE IF THERE ARE ANY VIOLATIONS AND ARE BEING MAINTAINED AS DESIGNED.

THE DESIGN PROFESSIONAL SHALL REPORT THE RESULTS OF THE INSPECTION TO THE PRIMARY PERMITTEE (AND OPERATOR) WITHIN SEVEN (7) DAYS AND THE PERMITTEE (AND OPERATOR) MUST CORRECT ALL DEFICIENCIES WITHIN TWO (2) BUSINESS DAYS OF RECEIPT OF THE INSPECTION REPORT. THE DESIGN PROFESSIONAL SHALL ISSUE WEATHER RELATED SITE CONDITIONS ARE SUCH THAT ADDITIONAL TIME IS REQUIRED.

INITIAL EROSION CONTROL PHASE SUMMARY

CONTRACTOR SHALL INSTALL INITIAL PERMITTER CONTROL BMP'S (SILT FENCE, CONSTRUCTION EXIT, TEMPORARY SEDIMENT BASIN, DIVERSION BERM, AND REQUIRED CURB) PRIOR TO CONSTRUCTION. CONTRACTOR SHALL MINIMIZE LAND DISTURBANCE TO AREAS SHOWN ON THIS PLAN UNTIL THE INITIAL INSPECTION HAS OCCURRED AND INSTALLATION OF THE INITIAL BMP'S HAS BEEN APPROVED. CONTRACTOR MAY MOVE INTO PHASE 2 CONSTRUCTION AND EROSION MEASURES AS DENIED ON CASE UPON COMPLETION OF INITIAL BMP'S.

CONTRACTOR SHALL NOT CLEAR ENTIRE SITE UNTIL AFTER INSPECTION / APPROVALS OF INITIAL BMP'S BY THE DESIGN PROFESSIONAL.



DISTURBANCE SUMMARY

PROJECT (PROPERTY) AREA:	67.15 ACRES
INITIAL PHASE DISTURBANCE:	2.10 ACRES
% OF PROJECT AREA:	7.92%

ES&PC DESIGN PROFESSIONAL'S CERTIFICATION STATEMENT

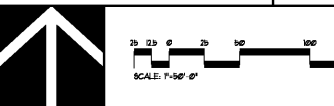
I CERTIFY UNDER PENALTY OF LAW THAT THIS PLAN WAS PREPARED AFTER A SITE VISIT TO THE LOCATION DESCRIBED HEREIN BY MYSELF OR MY AUTHORIZED AGENT UNDER MY SUPERVISION.

DESIGNED BY: *[Signature]*
 DATE: 09-26-2018
 CERTIFIED DESIGN PROFESSIONAL: LEVEL II DESIGNER
 GSWCC CERTIFICATION NO. 100000007019
 EXPIRATION DATE: 12-31-2025
 WREDEVELOPE.LAND.PLANNING, INC.

24-HR CONTACT INFORMATION

BRUCE STUART
 OWNER / PRIMARY PERMITTEE
 ROCKDALE CO. PUBLIC SCHOOL
 678-873-7942

BRUCE D. LOVE
 LAND PLANNING
 Landscape Architects • Civil Engineers
 www.landplanning.net
 BLP JOB# 18151



CAUTION

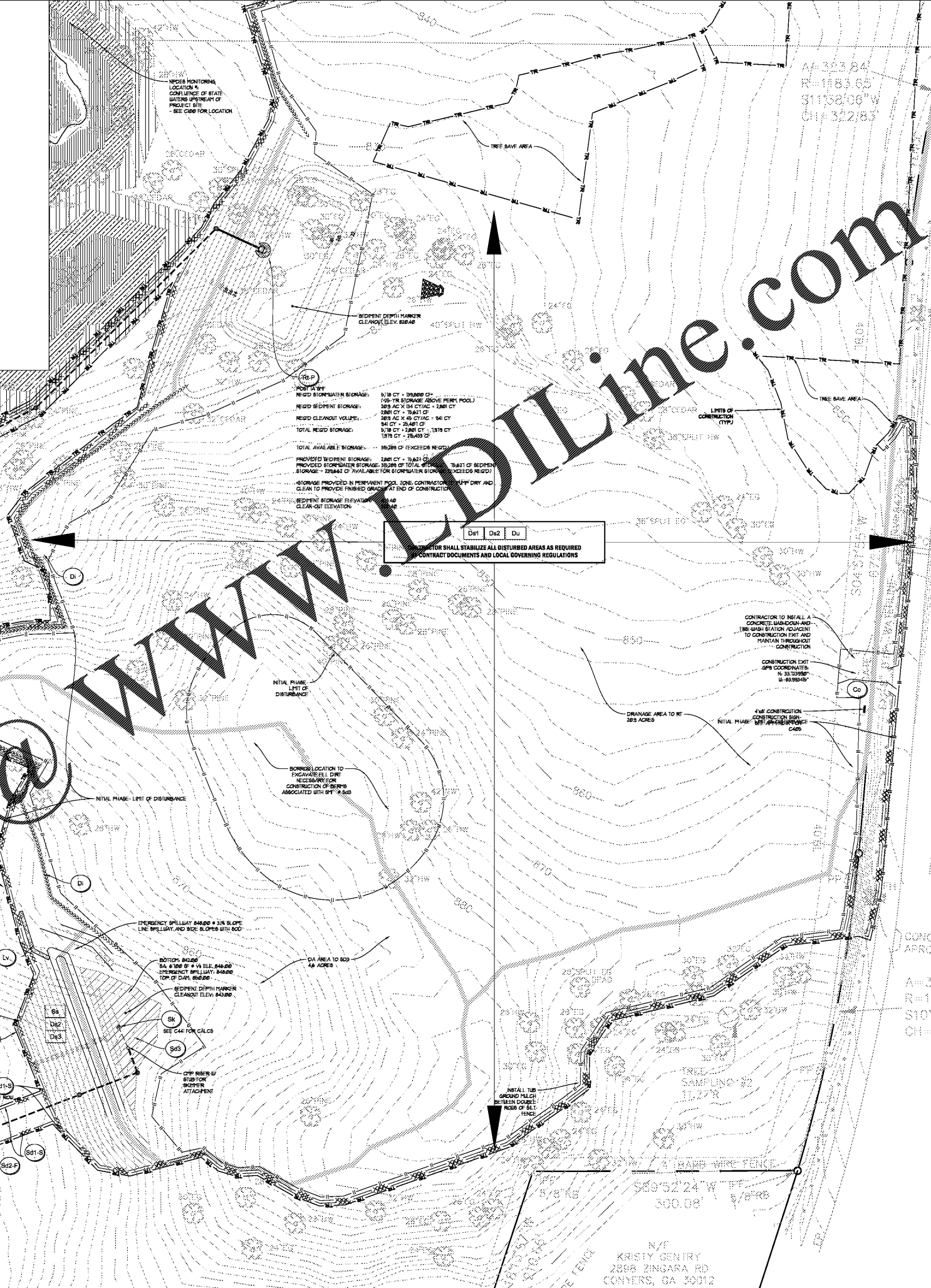
THE UTILITIES SHOWN ARE SHOWN FOR THE CONTRACTOR'S CONVENIENCE ONLY. THERE MAY BE OTHER UTILITIES NOT SHOWN ON THESE PLANS. THE DESIGN PROFESSIONAL ASSUMES NO RESPONSIBILITY FOR THE LOCATION, DEPTH AND IT SHALL BE THE CONTRACTOR'S RESPONSIBILITY TO VERIFY THE LOCATION OF UTILITIES WITHIN THE LIMITS OF WORK. DAMAGE TO EXISTING UTILITIES BY THE CONTRACTOR FROM HIS/HER OPERATIONS, SHALL BE THE SOLE RESPONSIBILITY OF THE CONTRACTOR.

CONTRACTOR SHALL BE RESPONSIBLE TO SECURE THE SERVICES OF A PRIVATE UTILITY LOCATOR PRIOR TO ANY CONSTRUCTION. THE CONTRACTOR SHALL PAY FOR SAID SERVICES. CONTRACTOR SHALL PREPARE ALL UTILITIES DAMAGED BY CONSTRUCTION ACTIVITIES. AT NO ADDITIONAL COST TO THE OWNER.

GEORGIA UNIFORM CODING SYSTEM FOR SOIL EROSION AND SEDIMENT CONTROL PRACTICES
 GEORGIA SOIL AND WATER CONSERVATION COMMISSION

STRUCTURAL PRACTICES				VEGETATIVE PRACTICES			
CODE	PRACTICE	MAP SYMBOL	MAP SYMBOL	CODE	PRACTICE	MAP SYMBOL	MAP SYMBOL
Cd	CHECKDAM	[Symbol]	Gr	GRADE STABILIZATION STRUCTURE	[Symbol]	Sb	SEEP BERM
Ch	CHANNEL STABILIZATION	[Symbol]	Lv	LIVEL SPREADER	[Symbol]	Sr	TEMPORARY STREAM CROSSING
Co	CONSTRUCTION FENCE	[Symbol]	Rd	ROCK FILTER DAM	[Symbol]	St	STONEWALL OUTLET PROTECTION
Cr	CONSTRUCTION ROAD STABILIZATION	[Symbol]	Re	RETAINING WALL	[Symbol]	Su	SURFACE ROUGHENING
Dc	STREAM DIVERSION CHANNEL	[Symbol]	Rt	RETRO FITTING	[Symbol]	Tc	TURBIDITY CURTAIN
Di	DIVERSION	[Symbol]	Sd1	SEDIMENT BARRIER	[Symbol]	Tp	TOPSOILING
Dn1	TEMPORARY DOWNDRUM STRUCTURE	[Symbol]	Sd2	INLET SEDIMENT TRAP	[Symbol]	Tr	TREE PROTECTION
Dn2	PERMANENT DOWNDRUM STRUCTURE	[Symbol]	Sd3	TEMPORARY SEDIMENT BASIN	[Symbol]	Wt	VEGETATED WATERWAY OR STORMWATER CONVEYANCE CHANNEL
Fr	FILTER RING	[Symbol]	Sd4	TEMPORARY SEDIMENT TRAP	[Symbol]	Sb	STREAMBANK STABILIZATION (USING PERM. VEGETATION)
Ga	GABION	[Symbol]	Sk	FLOATING SURFACE SKIMMER	[Symbol]	Ss	SLOPE STABILIZATION
						Tac	TACKLERS AND BROOMS

NOTE: SEE C441 FOR Sd3, ST, & Sd2-E CALCS



One Piedmont Center, Suite 303 3565 Piedmont Road Atlanta, Georgia 30305

Smallwood, Reynolds, Stewart, & Associates, Inc. Architects

INITIAL ES&PC PLAN

J.H. HOUSE ELEMENTARY SCHOOL
 3100 Zingara Road NE, Conyers, GA 30012

DATE: _____
 JOB NO. **218036.00**
 SHEET NO. **C410**

REV. NO.	DATE	REMARKS
1	04/05/18	GDCE PRELIMINARY
2	06/05/18	B18 PACKAGE
3	08/15/18	GDCE CHECK SET

INSTRUCTIONAL UNITS	REGULAR CLASSROOMS	LABORATORY	MUSIC	PHYSICAL EDUCATION	ART	TOTAL
45	71,150 SF	37,275 SF	108,330 SF	5,146 SF	7,265 SF	2,650 SF

PROJECT SUMMARY	OWNER	DESIGNER	DATE
J.H. HOUSE ELEMENTARY SCHOOL	ROCKDALE COUNTY SCHOOLS	SMALLWOOD, REYNOLDS, STEWART & ASSOCIATES, INC.	09-26-2018

ISSUED FOR CONSTRUCTION