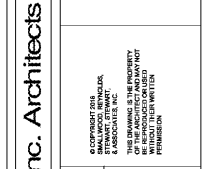


REV. NO.	DATE	REVISIONS / PRINTED
1	04/03/19	0000 PRELIMINARY
2	06/08/19	0010 PACKAGE
3	08/16/19	0000 CHECK SET

INSTRUCTIONAL UNITS	BLP AREA	BLP PERCENT
REGULAR CLASSROOMS	71,159 SF	45
REGULAR CLASSROOMS	37,239 SF	4
MUSIC	10,637 SF	4
PHYSICAL EDUCATION		1
ART CENTER		1
ART		1
TOTAL	119,033 SF	51



STORM PIPE PROFILES
 J.H. HOUSE ELEMENTARY SCHOOL
 3100 Zingira Road NE, Conyers, GA 30012

DATE: _____
 JOB NO. **218036.00**
 SHEET NO. **C320**
 ISSUED FOR CONSTRUCTION

Smallwood, Reynolds, Stewart & Associates, Inc. Architects

One Piedmont Center, Suite 303 3565 Piedmont Road Atlanta, Georgia 30305

PROJECT: JH HOUSE
 PROJECT LOCATION: Rockdale County

BREED LOVE AND PLANNING, INC. PECHAS
 YEAR STORM INTENT: 25 Year

PIPE PROFILE LEGEND

Structure	Drainage Structure	Inlet (ft)	Inlet Time (min)	Q (cfs)	Total Q (cfs)	Capacity (cfs)	Pipe Size (in)	Slope (%)	n-value	Velocity (ft/s)	Depth (ft)	Inv. Up (ft)	Inv. Dn (ft)	HGL Up (ft)	HGL Dn (ft)		
A12		0.69	0.36	5	2.87	2.87	5.69	18	1.00	0.024	2.86	0.58	854.30	853.58	855.03	854.54	
A11		0.80	0.69	5	5.08	7.58	12.25	24	1.00	0.024	3.16	1.59	853.06	852.60	854.37	854.19	
A10		0.43	0.78	5	3.05	10.34	12.25	24	1.00	0.024	4.37	1.41	852.50	851.16	853.51	852.57	
A9		0.55	0.78	5	3.35	13.52	22.22	30	1.00	0.024	3.85	1.90	850.99	849.71	852.14	851.69	
A8a	A8a	0.07	0.95	5	0.61	0.81	5.69	18	1.00	0.024	1.27	0.62	853.80	853.52	854.19	854.14	
A8a	A8	0.25	0.67	5	1.54	1.99	5.69	18	1.00	0.024	2.63	0.61	853.42	853.29	854.03	853.90	
A8	A7	0.40	0.90	5	3.31	17.60	22.21	30	1.00	0.024	4.66	2.90	849.61	848.37	851.30	850.57	
A7	A6	0.23	0.73	5	1.24	16.71	22.21	30	1.00	0.024	4.90	1.84	848.27	847.32	850.03	849.16	
A6	A5	0.19	0.81	5	1.42	19.61	22.21	30	1.00	0.024	5.11	1.82	847.22	846.26	849.03	848.08	
A5	A4	0.14	0.98	5	1.28	20.17	22.21	30	1.00	0.024	5.24	1.60	846.35	844.25	848.95	848.85	
A4a	A4	0.37	0.35	5	1.19	1.19	5.69	18	1.00	0.024	2.65	0.47	846.35	845.78	848.02	846.22	
A4	A3	0.36	0.89	5	2.95	22.96	20.82	36	5.01	0.024	5.02	2.40	842.56	837.11	844.10	838.51	
A3a	A3c	4.35	0.42	22.3	8.70	8.70	12.25	24	1.00	0.024	3.96	1.43	843.80	842.98	845.03	844.41	
A3c	A3b	0.45	0.89	5	2.92	10.09	12.25	24	1.00	0.024	4.36	1.38	842.88	842.49	844.26	843.87	
A3b1	A3b	0.58	0.67	5	3.64	3.64	5.69	18	1.00	0.024	3.41	0.87	844.50	844.12	845.37	844.99	
A3b	A3a	1.27	0.45	5	5.36	14.57	23.75	24	3.76	0.024	6.72	1.24	842.39	839.91	843.76	841.15	
A3a	A3	0.13	0.69	5	0.83	14.60	22.21	30	1.00	0.024	4.65	1.50	838.41	838.01	840.91	839.51	
A3	A2	0.52	0.35	5	1.67	29.78	36.13	36	1.00	0.024	5.71	2.08	837.01	836.83	839.09	839.00	
A2	A1	0.52	0.90	5	4.31	31.90	96.08	36	1.00	0.013	9.19	1.46	836.83	835.00	836.86	837.46	
B7	B6	0.55	0.53	5	2.68	2.68	5.69	18	1.00	0.024	2.89	0.82	855.36	854.45	856.04	855.37	
B9	B5	0.00	0.00	0	0.00	3.50	5.69	18	1.00	0.024	2.63	1.18	854.35	853.63	855.21	854.81	
B5	B4	0.31	0.67	5	2.48	5.55	5.69	18	1.00	0.024	3.67	1.20	853.53	852.42	854.73	853.61	
B4a	B4a	0.06	0.81	5	0.45	0.45	5.69	18	1.00	0.024	1.91	0.29	855.60	855.07	855.88	855.36	
B4a	B4	0.05	0.79	5	0.39	0.67	5.69	18	1.00	0.024	2.16	0.35	854.97	853.69	855.32	854.21	
B4	B3	0.89	0.78	5	6.39	9.41	12.25	24	1.00	0.024	4.30	1.31	851.52	851.33	853.24	852.64	
B3a	B3	0.15	0.91	5	1.34	1.34	5.69	18	1.00	0.024	2.63	0.50	855.21	854.90	855.70	855.00	
B3	B2	0.00	0.00	0	0.00	10.24	27.42	24	5.01	0.024	6.80	0.35	843.05	840.50	844.19	841.35	
B2	B1	0.00	0.00	0	0.00	10.17	22.62	24	1.00	0.013	8.25	0.84	834.76	834.50	835.90	835.44	
C6	C5	0.00	0.00	5	22.87	22.87	100.63	42	1.00	0.013	7.22	1.13	815.50	814.66	816.07	816.00	
C5	C4	0.00	0.00	0	0.00	22.87	100.61	42	1.00	0.013	7.22	1.13	811.30	808.42	812.77	809.55	
C4	C3	0.00	0.00	0	0.00	22.87	100.61	42	1.00	0.013	6.34	1.35	808.00	805.92	809.46	807.27	
C3	C2	0.00	0.00	0	0.00	22.87	100.61	42	1.00	0.013	7.22	1.13	805.80	803.48	807.27	805.82	
C2	C1	0.00	0.00	0	0.00	22.87	100.61	42	1.00	0.013	7.22	1.13	801.74	800.90	803.20	802.05	
D6	D7	0.22	0.58	5	1.13	1.13	5.69	18	1.00	0.024	1.45	1.17	856.76	855.86	857.28	857.03	
D7a	D7	0.50	0.81	5	6.84	8.84	12.25	24	1.00	0.024	3.45	1.87	855.92	854.28	857.28	857.03	
D7	D6	0.28	0.55	5	1.44	10.06	12.25	24	1.00	0.024	4.08	1.59	855.92	854.23	855.73	855.82	
D6	D5	0.35	0.53	5	1.71	11.24	12.25	24	1.00	0.024	4.21	1.63	854.13	853.58	855.66	855.21	
D5	D4	0.00	0.00	0	0.00	11.11	12.25	24	1.00	0.024	4.17	1.63	853.46	852.96	855.02	854.59	
D4	D3	0.17	0.57	5	0.89	11.73	12.25	24	1.00	0.024	3.99	1.87	852.86	852.01	854.55	853.88	
D3	D2	0.24	0.54	5	1.19	12.51	12.25	24	1.00	0.024	4.44	1.68	851.91	851.33	853.59	853.01	
D2	D1	0.55	0.35	5	1.77	13.80	41.01	30	1.00	0.013	6.58	1.00	850.83	850.00	852.08	851.00	
E5	E4	0.00	0.00	5	6.70	6.70	22.59	24	1.00	0.013	5.52	0.75	843.10	842.54	844.02	843.29	
E4	E3	0.00	0.00	0	0.00	6.70	22.62	24	1.00	0.013	5.52	0.75	839.20	834.50	836.12	836.25	
E3	E2	0.00	0.00	0	0.00	6.70	22.62	24	1.00	0.013	5.52	0.75	816.06	815.00	816.97	815.75	
E2	E1	0.00	0.00	0	0.00	6.70	22.62	24	1.00	0.013	5.51	0.75	801.90	800.90	802.82	801.65	
F	F2	F1	2.14	0.42	22.3	4.28	4.28	422.71	72	3.39	0.024	4.12	0.43	846.96	846.80	848.50	848.23
G	G2	G1	0.28	0.89	5	2.29	2.29	16.22	18	3.01	0.013	5.38	0.36	846.87	846.00	847.44	846.36

24-HR CONTACT INFORMATION
BRUCE STUART
 OWNER / PRIMARY PERMITTEE
 ROCKDALE CO. PUBLIC SCHOOL
 678-873-7942

BREED LOVE AND PLANNING
 Landscape Architects • Civil Engineers
 www.landplanning.net
 BLP JOB# 18151

CAUTION
 THE UTILITIES SHOWN ARE SHOWN FOR THE CONTRACTOR'S CONVENIENCE ONLY. THERE MAY BE OTHER UTILITIES NOT SHOWN ON THESE PLANS. THE DESIGN PROFESSIONAL ASSUMES NO RESPONSIBILITY FOR THE LOCATION, DEPTH AND TYPE OF UTILITIES SHOWN OR NOT SHOWN. IT IS THE CONTRACTOR'S RESPONSIBILITY TO VERIFY THE LOCATION OF UTILITIES WITHIN THE LIMITS OF THE WORK. DAMAGE TO EXISTING UTILITIES BY THE CONTRACTOR FROM HIS/HER OPERATIONS, SHALL BE THE SOLE RESPONSIBILITY OF THE CONTRACTOR.

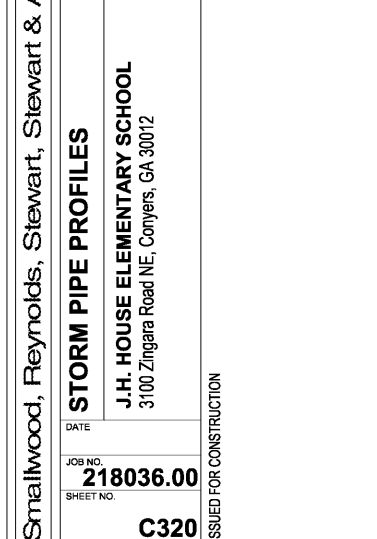
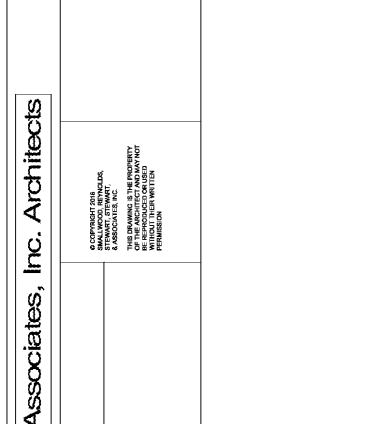
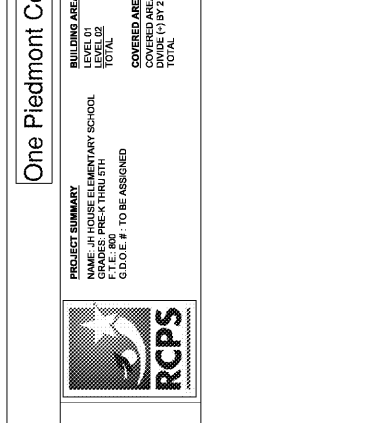
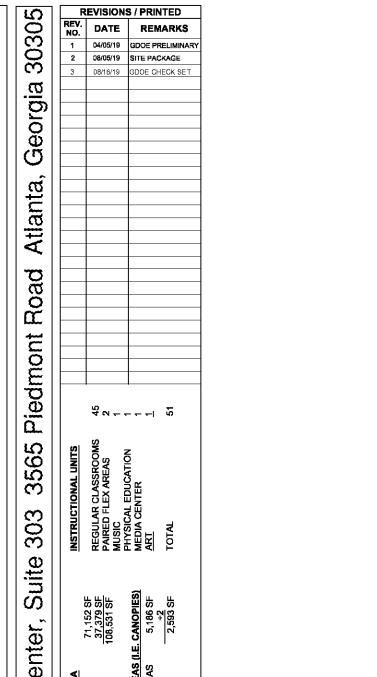
Know what's below. Call before you dig. Dial 811.
 Or Call 800-282-7411

CONTRACTOR SHALL BE RESPONSIBLE TO SECURE THE SERVICES OF A PRIVATE UTILITY LOCATOR FIRM DURING THE ENTIRE COURSE OF CONSTRUCTION. CONTRACTOR SHALL PAY FOR SAID SERVICES. CONTRACTOR SHALL PREPARE TO REPAIR ALL UTILITIES DAMAGED BY CONTRACTOR ACTIVITIES, AT NO ADDITIONAL COST TO THE OWNER.

CONTRACTOR SHALL BE RESPONSIBLE FOR CORRECTION OF BACKFILL OF ALL UTILITY TRENCHES WITHIN HIS/HER WORK LIMITS. THIS INCLUDES TRENCHES DIA. AND BACKFILLED BY LOCAL UTILITIES SUCH AS POWER, GAS, TELEPHONE, ETC. CONTRACTOR SHALL PROVIDE ADDITIONAL BACKFILL AND CORRECTION AS NECESSARY, IF SETTLEMENT OCCURS.

PIPE PROFILE LEGEND

- EXISTING GRADE
- PROPOSED GRADE
- 25 YEAR 1% ILL
- REINFORCED CONCRETE PIPE (CLASS IV)
- DUCTILE IRON PIPE (C, 150 LB)
- HIGH-DENSITY POLYETHYLENE PIPE
- ALUMINIZED STEEL TYPE 2
- ALUMINIZED STEEL TYPE 3 (SMOOTH BORE)
- PVC
- HDPE
- POLYETHYLENE TEREPHTHALATE (PET)
- FLARED END SECTION
- SWIFT END SECTION
- INVERT ELEVATION
- HYDRAULIC GRADE LINE



Order Plans @ www.DILine.com

Order Plans @ www.DILine.com

Order Plans @ www.DILine.com

Order Plans @ www.DILine.com